

	<u>Page No.</u>		<u>Page No.</u>
Engineering Data	B-2	Wheels Summary Chart	B-20
Bearings Summary Chart	B-5	Wheels	
Housings and Shot Guards Summary Chart	B-6	B4000 Series	B-21
Bearings		B4021 Series	B-21
B1000 Series	B-7	B4031 Series	B-21
B1011 Series	B-7	B4040 Series	B-22
B1020 Series	B-8	B4050 Series	B-22
B1030 Series	B-9	B4062 Series	B-22
B1041 Series	B-9	B4071 Series	B-23
B1050 Series	B-10	B4080 Series	B-23
B1060 Series	B-11	B4090 Series	B-23
B1070 Series	B-12	B4100 Series	B-23
B1080 Series	B-13		
B1100 Series	B-14	Ball Transfer Summary Chart	B-24
B1120 Series	B-14		
B1130 Series	B-15	Ball Transfers	
B1140 Series	B-16	B4500 Series	B-25
B1150 Series	B-16	B4510 Series	B-25
B1160 Series	B-17	B4520 Series	B-25
B1210 Series	B-18	B4530 Series	B-25
B1220 Series	B-18	B4550 Series	B-26
B1260 Series	B-19	B4560 Series	B-26
B1270 Series	B-19		

BEARINGS			LOAD RATING (POUNDS)	BORE SIZE*	GRADE			FACE		SEALS & SHIELDS			LUBRICATION		FINISH				STOCK	MADE TO ORDER
PART NUMBER	FORMER PART NUMBER	PAGE NO.			NON-PRECISION	PRECISION	JOURNAL	STRAIGHT	FLANGED	FRONT	BACK	RETAINING RING	GREASE PACKED	REGREASABLE	STAINLESS STEEL	NYLON	ZINC PLATED			
B1000-1	11	B-7	40	5/16H	●				●										●	
B1000-2	11G	B-7	40	5/16H	●				●				●						●	
B1001-1	11Z	B-7	40	5/16H	●				●									●		●
B1011-6	11N	B-7	30	5/16H			●		●									●		●
B1020-1	29000, 290, 292	B-8	155	7/16H	●				●	●	●									●
B1020-2	29010, 290G, 296	B-8	155	7/16H	●				●	●	●		●							●
B1022-1	29013	B-8	155	1/2R	●				●	●	●									●
B1024-1	-	B-8	50	7/16H	●				●	●	●									●
B1025	CB14-3	B-8	330	7/16H	●				●	●	●									●
B1027-2	999150	B-8	375	7/16H	●				●	●	●									●
B1030-2	294, 29-AB	B-9	155	7/16H	●				●	●		●	●							●
B1031-2	296	B-9	155	7/16H	●				●	●		●	●							●
B1041-6	290N	B-9	50	7/16H			●		●									●		●
B1050-1	332, 33-A	B-10	155	7/16H	●			●		●										●
B1051-2	334, 336, 33-AB	B-10	155	7/16H	●				●	●		●	●							●
B1052-2	330SS, 33SBGSS	B-10	30	7/16H	●				●	●		●	●				●			●
B1060-1	481	B-11	305	11/16H	●				●	●										●
B1060-2	481G	B-11	305	11/16H	●				●	●			●							●
B1061-2	483	B-11	305	11/16H	●				●	●	●		●	●						●
B1062-2	484	B-11	305	11/16H	●				●	●	●		●	●						●
B1063-2	484R	B-11	305	3/4R-S	●				●	●	●		●	●						●
B1064-2	486	B-11	305	11/16H	●				●	●	●		●	●						●
B1065-1	482	B-11	305	11/16H	●				●	●										●
B1070-1	531	B-12	305	11/16H	●			●		●										●
B1071-2	534	B-12	305	11/16H	●				●	●	●		●	●						●
B1072-2	533	B-12	305	11/16H	●				●	●	●		●	●						●
B1073-1	532	B-12	305	11/16H	●				●	●										●
B1073-2	532G	B-12	305	11/16H	●				●	●			●							●
B1080-1	581, 58S	B-13	1250	1-1/16H	●				●	●										●
B1081-2	584, 58AB	B-13	1250	1-1/16H	●				●	●	●		●	●						●
B1082-2	583, 58SB	B-13	1250	1-1/16H	●				●	●	●		●	●						●
B1083-2	585, 58SBG	B-13	1250	1-1/16H	●				●	●	●		●	●						●
B1084-2	586, 58ABG	B-13	1250	1-1/16H	●				●	●	●		●	●						●
B1085-2	58RSBG	B-13	1250	1-3/16R-S	●				●	●	●		●	●						●
B1086-1	582, 58-A	B-13	1250	1-1/16H	●				●	●										●
B1100-1	632, 63-A	B-14	2250	1-1/4H	●				●	●										●
B1101-2	634, 63-AB	B-14	2250	1-1/4H	●				●	●	●		●	●						●
B1102-2	63RSBG	B-14	2250	1-7/16R	●				●	●	●		●	●						●
B1120-2	1103, 110-SB	B-14	3750	1-1/2H	●				●	●	●		●	●						●
B1130-2	30900	B-15	5700	1-11/16R			●		●	●		●	●							●
B1131-2	30900	B-15	5700	1-11/16R			●		●	●		●	●							●
B1140-2	210	B-16	6500	2-7/16R			●		●	●		●	●							●
B1150-2	20508, 53-205	B-16	2380	11/16H			●		●	●		●	●							●
B1151-2	20506	B-16	2380	11/16H			●		●	●		●	●							●
B1160-2	20706	B-17	4260	1-1/16H			●		●	●		●	●							●
B1161-2	20708, 58-207	B-17	4260	1-1/16H			●		●	●		●	●							●
B1210-2	206J	B-18	2100	1-3/16R			●		●	●		●	●							●
B1211-2	206J	B-18	2100	1-3/16R			●		●	●		●	●							●
B1220-2	60A	B-18	3770	1-3/8R			●		●	●		●	●							●
B1221-2	60A	B-18	3770	1-3/8R			●		●	●		●	●							●
B1260-1	-	B-19	40	5/16H	●				●	●	●									●
B1261-1	-	B-19	40	1/4R	●				●	●	●									●
B1270	-	B-19	126	7/16H			●		●	●	●		●							●

*BORE SIZE: "H" means for Hexagon Hole "R" means for Round Hole "S" means for Serrated Bore which requires Knurled Axle

HOUSINGS AND SHOT GUARDS

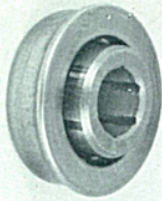


BEARING SERIES	HOUSING	ROLLER	PAGE NO.
B1000	B5232	1.625" dia. x .049" Tapered	B-7
	B5233	1.90" dia. x .065"	B-7
	B5234	1.375" dia. x .049"	B-7
B1020	B5235	1.90" dia. x .148"	B-8
	B5239	1.90" dia. x .065"	B-8
	B5241	1.90" dia. x .109"	B-8
	B5251	2.50" dia. x .083" and 2.50" Tapered	B-8
	B5323	1.90" dia. x .148" Stainless Steel	B-8
B1030	B5235	1.90" dia. x .148"	B-9
	B5239	1.90" dia. x .065"	B-9
	B5241	1.90" dia. x .109"	B-9
B1050	B5235	1.90" dia. x .148"	B-10
	B5239	1.90" dia. x .065"	B-10
	B5241	1.90" dia. x .109"	B-10
	B5323	1.90" dia. x .148" Stainless Steel	B-10
B1060	B5248	3.50" dia. x .148"	B-11
B1070	B5248	3.50" dia. x .148"	B-12
B1080	B5245	4.0" dia. x .134"	B-13
B1160	B5245	4.0" dia. x .134"	B-17
	B5252	4.0" or 4.25" dia.	B-17
B1210	B5240	4.25" dia. x .250"	B-18
	B5242	4.25" dia. x .134"	B-18

BEARING SERIES	SHOT GUARD	ROLLER	PAGE NO.
B1020	B5265	2.50" dia. x .083"	B-8
B1050	B5264	1.90" dia. x .148"	B-10
B1070	B5261	2.56" dia. x .180"	B-12
B1080	B5262	3.50" dia. x .300"	B-13
B1100	B5263	4.25" dia. x .438"	B-14



B1000 Series



DESCRIPTION:

- Flanged Type Non-Precision Bearing
- 5/16" Hex Axle
- 40# Per Bearing Load Rating
- Fifteen 1/8" Dia. Hardened Steel Balls
- Pressed Steel Outer Shell

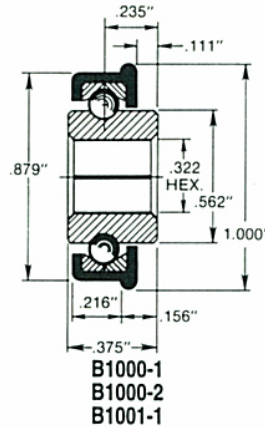
USES:

- Primarily gravity or push line conveyor rollers.
- May be used in low speed/light load powered applications when grease packed.
- B1001 is used in corrosive areas.

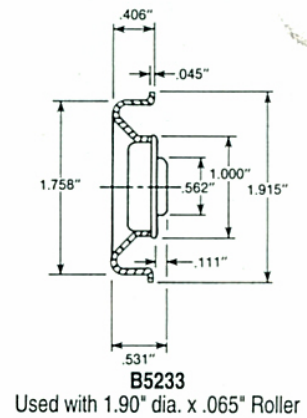
BEARINGS INCLUDED:

Current Model No.	Old Number
B1000-1	11
B1000-2	11G
B1001-1	11Z (Zinc Plated)

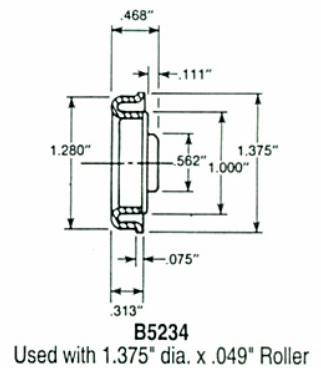
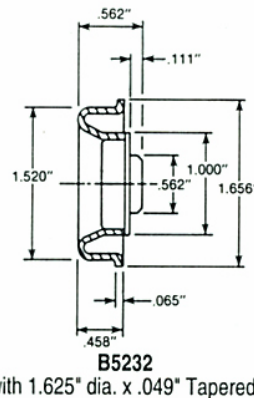
BEARINGS:



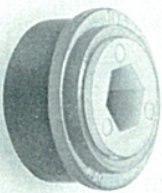
HOUSINGS: (Continued)



HOUSINGS:



B1011 Series



DESCRIPTION:

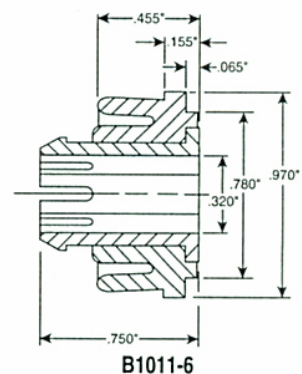
- Flanged Type Journal Bearing
- All Nylon Two Piece Bearing
- 5/16" Hex Axle
- 30# Per Bearing Load Rating

USES:

Primarily Gravity Conveyor. Can be used in low speed and light load powered equipment. Primary uses include wash down areas, low noise requirements and dusty conditions. The B1011-6 should not be used in abrasive conditions. This bearing has a higher coefficient of friction than ball bearings. It requires a steeper gravity grade and more horsepower in power conveyor. A check of the allowable PV factor must be made for powered applications.

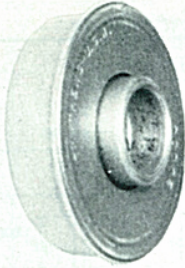
BEARING INCLUDED:

Current Model No.	Old Number
B1011-6	11 Nylon



BEARINGS

B1020 Series



DESCRIPTION:

- Flanged Type Non-Precision Bearing
- 155# Per Bearing Load Rating (B1020, B1022)
- 50# Per Bearing Load Rating (B1024)
- 330# Per Bearing Load Rating (B1025)
- 375# Per Bearing Load Rating (B1027)
- Eleven 9/32" Dia. Hardened Steel Balls
- Pressed Steel Outer Shell
- Labyrinth Seals
- 7/16" Hex Axle (B1020, B1024, B1025, B1027)
- 1/2" Dia. Shaft (B1022)

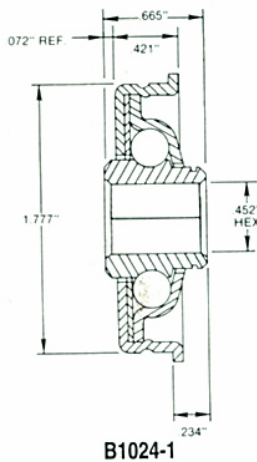
USES:

- General purpose gravity and powered equipment.
- The B1022 uses a round axle. This allows the customer to mount rollers in any frame by just drilling holes.

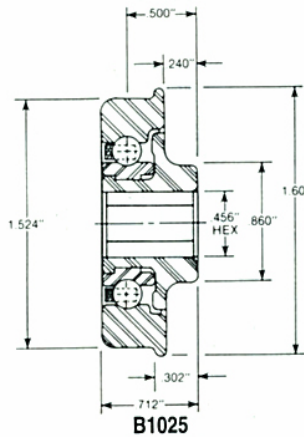
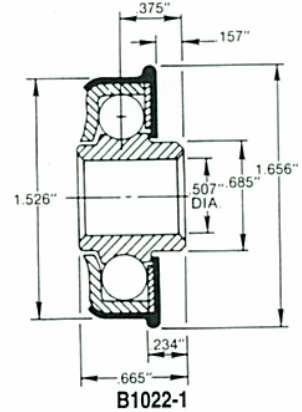
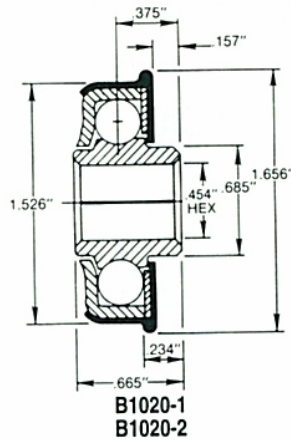
BEARINGS INCLUDED:

Current Model No.	Old Number
B1020-1	29000, 290, 292
B1020-2	29010, 290G, 296
B1022-1	29013
B1024-1	-
B1025	CB14-3
B1027-2	999150

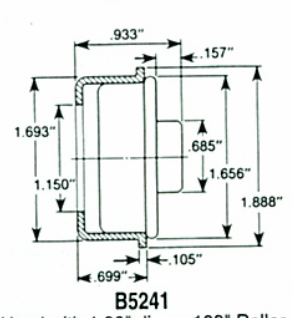
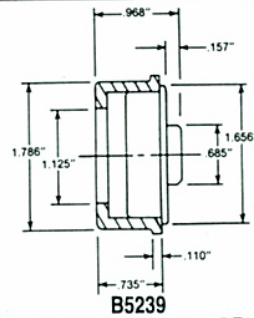
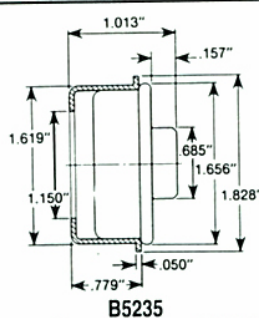
BEARINGS:



BEARINGS: (Continued)



HOUSINGS:

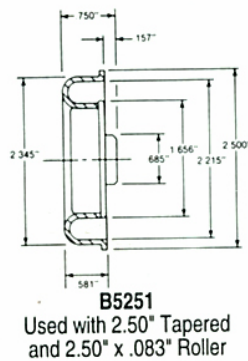


Used with 1.90" dia. x .148" Roller
(For Stainless Steel Use B5323)

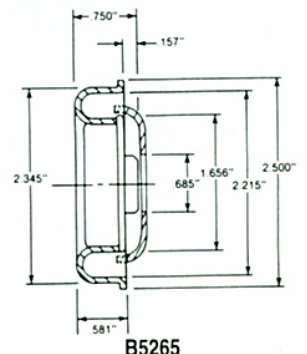
Used with 1.90" dia. x .065" Roller

Used with 1.90" dia. x .109" Roller

SHOT GUARD:

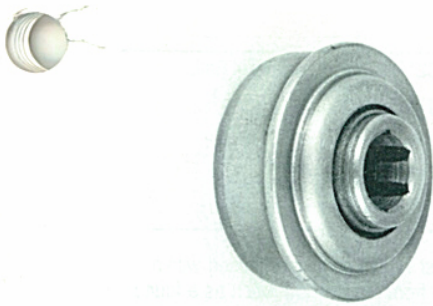


Used with 2.50" Tapered and 2.50" x .083" Roller



Used with 2.50" dia. x .083" Roller
Effective 8/1/93

B1030 Series



USES:

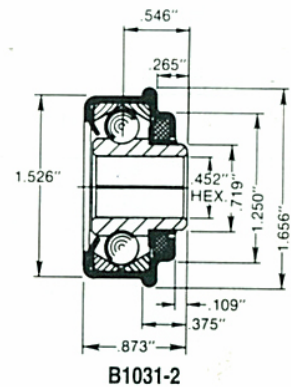
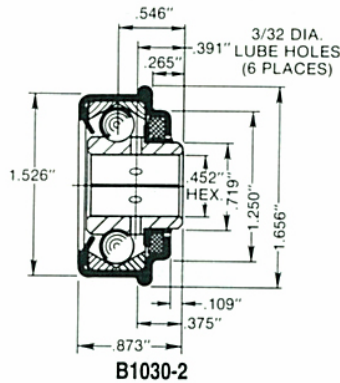
Used in powered equipment where regreasable bearings are required. Since it is grease packed it has limited use in gravity conveyor. The drag, due to the grease and felt seal, create a steeper grade requirement. In powered applications, speed should not exceed 150 F.P.M.

BEARINGS INCLUDED:

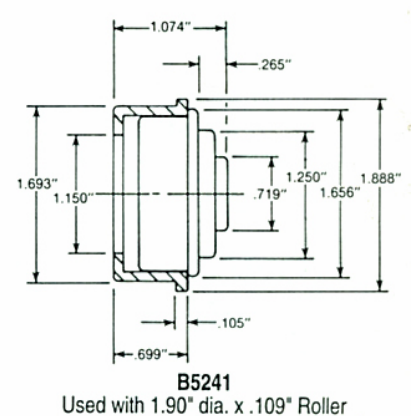
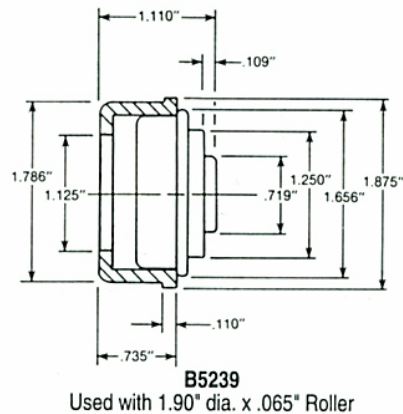
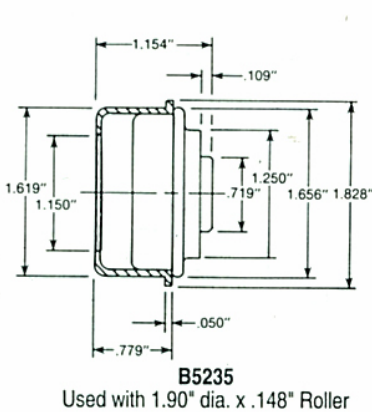
Current Model No.	Old Number
B1030-2	294 and 29AB
B1031-2	296

DESCRIPTION:

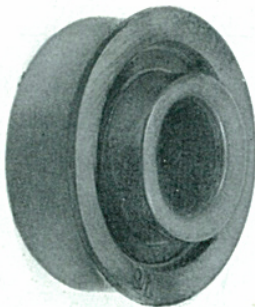
- Flanged Type Non-Precision Bearing
- 7/16" Hex Axle
- 155# Per Bearing Load Rating
- Eleven 9/32" Dia. Hardened Steel Balls
- Front Seal
- Back Retaining Ring
- Pressed Steel Outer Shell
- Inner Race Drilled for Pressure Lubrication (B1030)



HOUSINGS:



B1041 Series



DESCRIPTION:

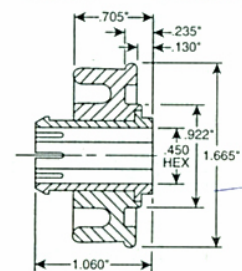
- Flanged Type Journal Bearing
- 7/16" Hex Axle
- All Nylon Two Piece Bearing
- 50# Per Bearing Load Rating

USES:

Similar to applications for B1011, B1041 has a higher load capacity. For both the B1011 and B1041 a check of the allowable PV factor must be made for powered applications.

BEARINGS INCLUDED:

Current Model No.	Old Number
B1041-6	290 Nylon



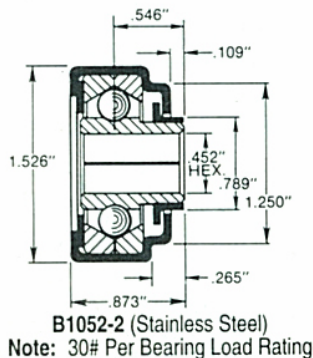
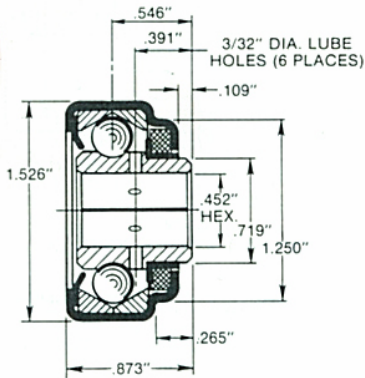
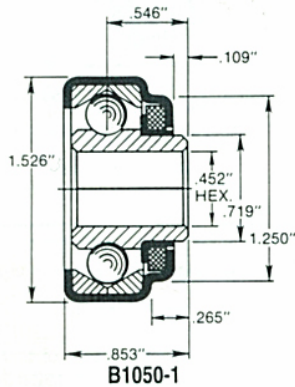
BEARINGS

B1050 Series



BEARINGS INCLUDED:

Current Model No.	Old Number
B1050-1	332, 33A
B1051-2	334, 336, 33AB
B1052-2	330SS, 33SBGSS



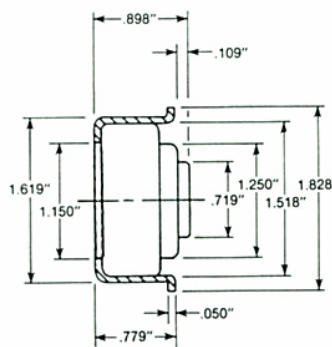
DESCRIPTION:

- Straight Faced Non-Precision Bearing
- 7/16" Hex Axle
- 155# Per Bearing Load Rating
- Eleven 9/32" Dia. Hardened Steel Balls
- Front Seal
- Pressed Steel Outer Shell

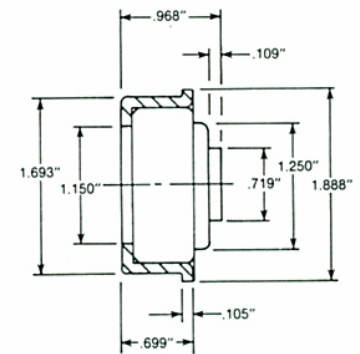
USES:

- Used in gravity and powered equipment where the bearing must be completely recessed within the confines of the roller. This is usually done to protect the bearing from dirt and grit, such as a foundry application.
- The B1051 is a regreasable bearing.

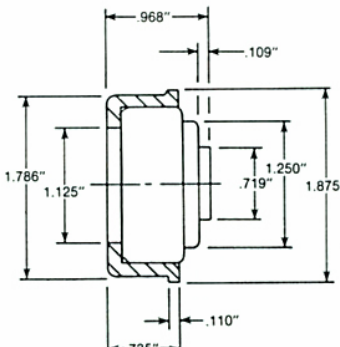
HOUSINGS:



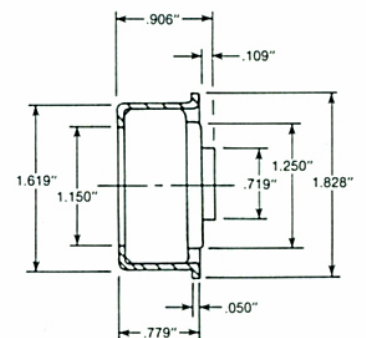
Used with 1.90" dia. x .148" Roller



Used with 1.90" dia. x .109" Roller

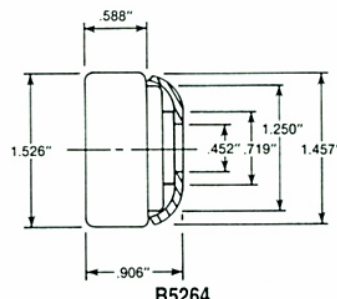


Used with 1.90" dia. x .065" Roller



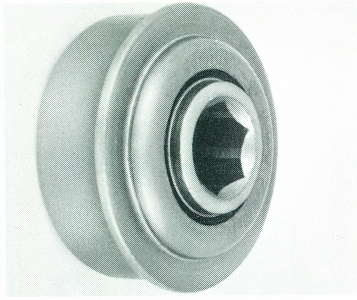
(Stainless Steel)
Used with 1.90" dia. x .148" Stainless Steel Roller

SHOT GUARD:



Used with 1.90" dia. x .148" Roller





BEARINGS: (Continued)

DESCRIPTION:

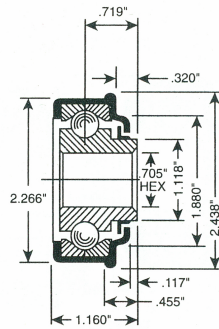
- Flanged Type Non-Precision Bearing
- 11/16" Hex Axle
- 305# Per Bearing Load Rating
- Twelve 3/8" Dia. Hardened Steel Balls
- Pressed Steel Outer Shell

USES:

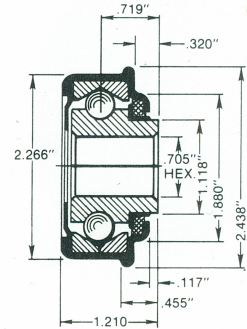
- Primarily used in gravity and push lines where load requirements exceed the capacity of the B1020.
- It can be used in powered equipment when it is grease packed.
- B1061 is used in high temperature applications, up to 350° F (177° C). It is also used in dusty conditions where frequent regreasing is necessary.
- B1062 is used in low temperature applications where regreasing is required.
- B1063 is similar to the B1062 except it uses a 3/4" diameter shaft. This allows the customer to buy rollers and knurled axles and mount them in any frame. The larger shaft provides better resistance to axle deflection.
- The B1064 is used primarily in powered conveyor. It has a seal, is grease packed and is non-regreasable.

BEARINGS INCLUDED:

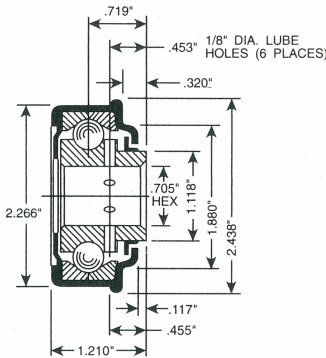
Current Model No.	Old Number
B1060-1	481
B1060-2	481G
B1061-2	483
B1062-2	484
B1063-2	484R
B1064-2	486
B1065-1	482



B1060-1
B1060-2

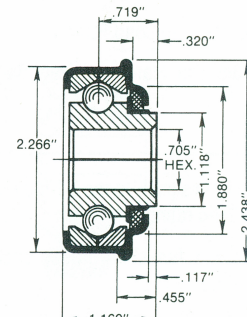


B1064-2
● Front Seal
● Back Shield

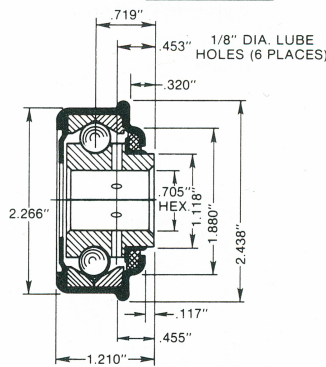


B1061-2

- Regreasable
- Back Shield
- Labyrinth Front Shield
- Made To Order



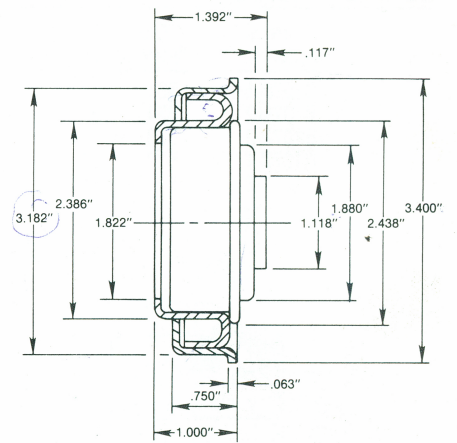
B1065-1



B1062-2

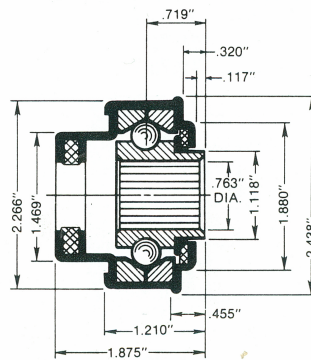
- Regreasable
- Front Seal
- Back Shield

HOUSING:



B5248

Used with 3.50" dia. x .148" Roller

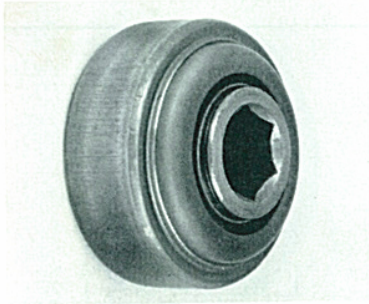


B1063-2

- Regreasable
- Back Seal

BEARINGS

B1070 Series



DESCRIPTION:

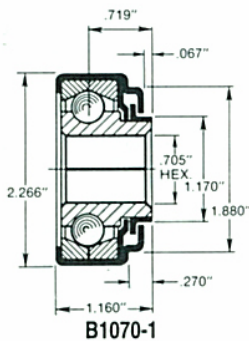
- Straight Faced Non-Precision Bearing
- 11/16" Hex Axle
- 305# Per Bearing Load Rating
- Twelve 3/8" Dia. Hardened Steel Balls

USES:

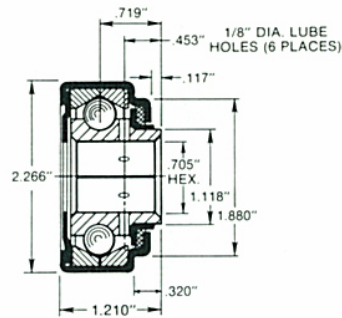
- The B1070 is similar to the B1050 except it has a higher load rating.
- The B1071 is furnished grease packed and is regreasable.
- The B1072 is a regreasable bearing used in high temperature applications where the bearing must be recessed. It is furnished grease packed.

BEARINGS INCLUDED:

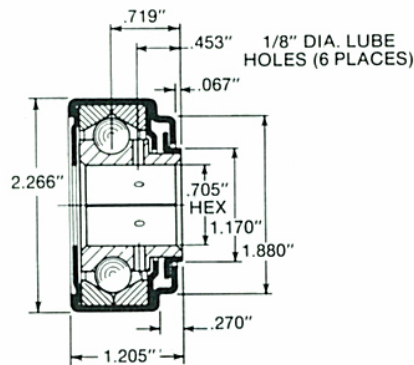
Current Model No.	Old Number
B1070-1	531
B1071-2	534
B1072-2	533
B1073-1	532
B1073-2	532G



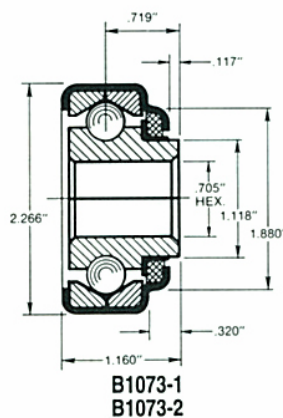
BEARINGS: (Continued)



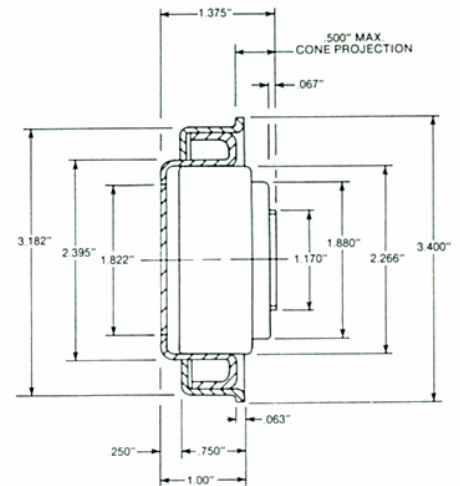
- Front Seal
- Back Shield



- Labyrinth Front Shield
- Back Shield
- Made To Order

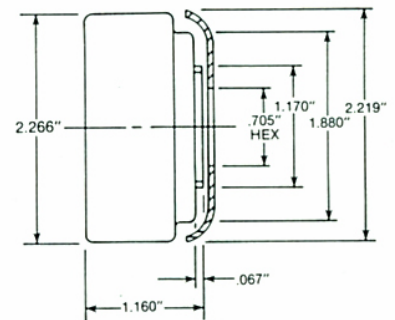


HOUSING:

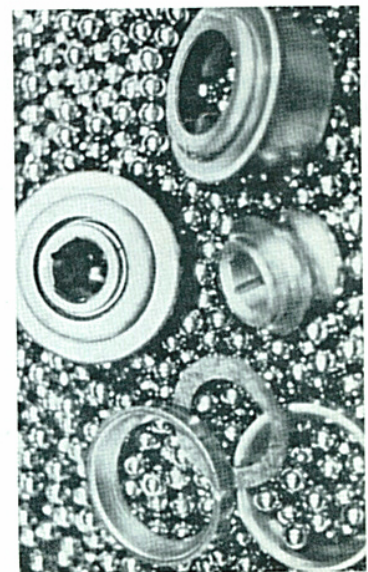


Used with 3.50" dia. x .148" Roller

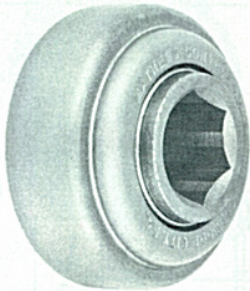
SHOT GUARD:



Used with 2.56" dia. x .180" Roller



B1080 Series



DESCRIPTION:

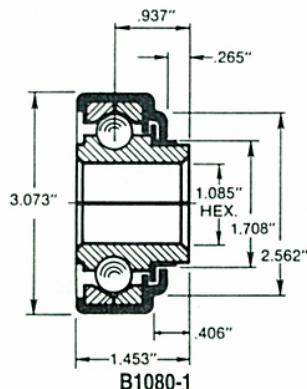
- Straight Faced Non-Precision Bearing
- 1-1/16" Hex Axle
- 1250# Per Bearing Load Rating
- Thirteen 1/2" Dia. Hardened Steel Balls
- Pressed Steel Outer Shell

USES:

- The B1080 is used mostly in gravity applications. It can be used in powered equipment when grease packed. It is recessed. Shot guards can be used.
- The B1081 is used mainly for CDLR. It can be used for gravity. It is recessed and can be used with shot guards. It is provided grease packed.
- The B1082 is used in power equipment for high temperature or dusty environments. It is grease packed.
- The B1083 is used where a back seal is desirable to prevent dirt, but the drag of a felt front seal is objectionable. It is grease packed.

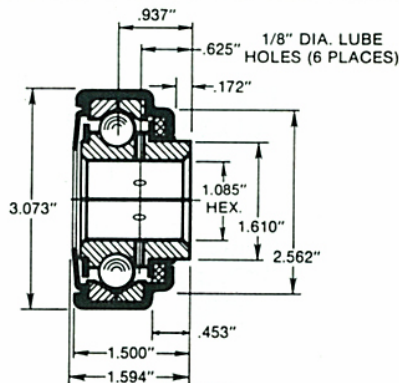
BEARINGS INCLUDED:

Current Model No.	Old Number
B1080-1	581, 58S
B1081-2	584, 58AB
B1082-2	583, 58SB
B1083-2	585, 58SBG
B1084-2	586, 58ABG
B1085-2	58RSBG
B1086-1	582, 58A



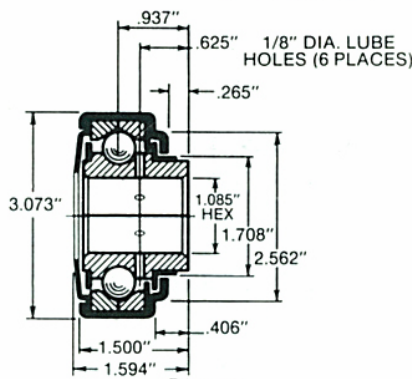
B1080-1

BEARINGS: (Continued)



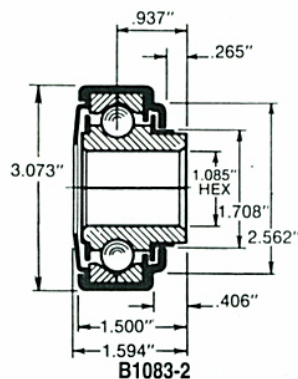
B1081-2

- Front Seal
- Labyrinth Back Shield



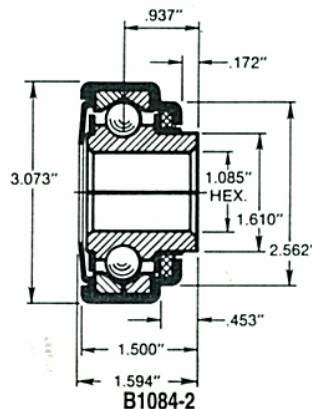
B1082-2

- Front & Back Labyrinth Shields
- Made To Order



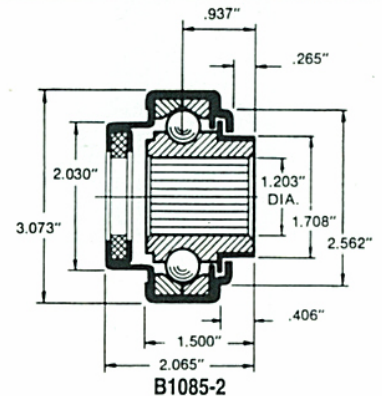
B1083-2

- Front & Back Labyrinth Shields
- Made To Order

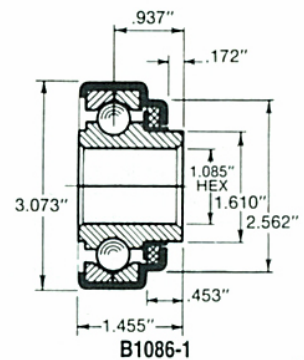


B1084-2

BEARINGS: (Continued)

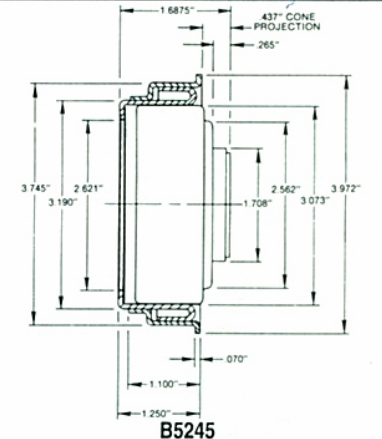


B1085-2



B1086-1

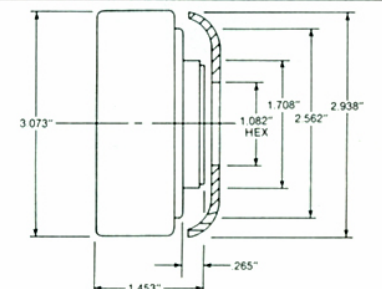
HOUSING:



B5245

Used with 4.0" dia. x .134" Roller

SHOT GUARD:



B5262

Used with 3.50" dia. x .300" Roller

BEARINGS



B1100 Series



DESCRIPTION:

- Straight Faced Non-Precision Bearing
- 1-1/4" Hex Axle
- 2250# Per Bearing Load Rating
- Thirteen 9/16" Dia. Hardened Steel Balls
- Pressed Steel Outer Shell

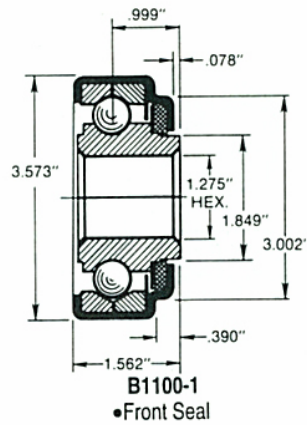
USES:

- The B1100 is used for gravity applications, but it can be used for powered equipment when grease packed. It is recessed and can be supplied with shot guards.
- The B1101 is used for powered equipment. It is recessed and can be provided with shot guards. It is regreasable.

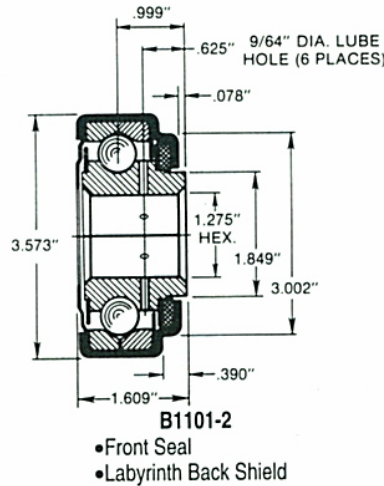
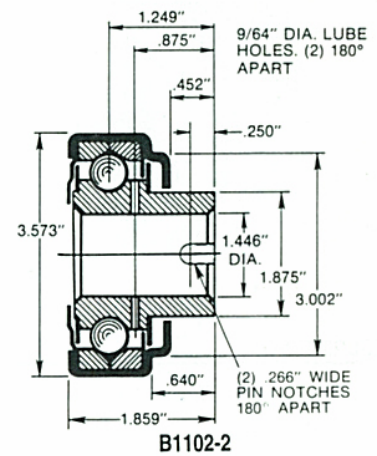
BEARINGS INCLUDED:

Current Model No.	Old Number
B1100-1	632, 63A
B1101-2	634
B1102-2	63RSBG

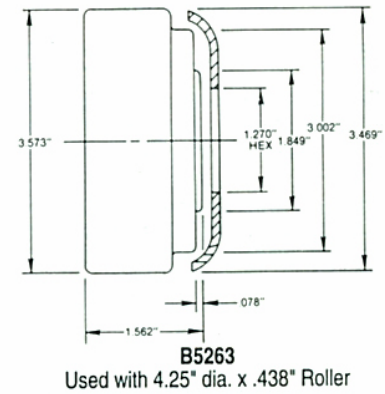
BEARINGS: (Continued)



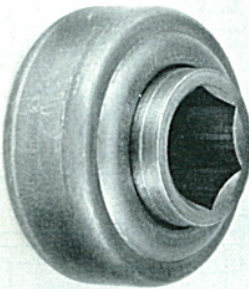
BEARINGS: (Continued)



SHOT GUARD:



B1120 Series



USES:

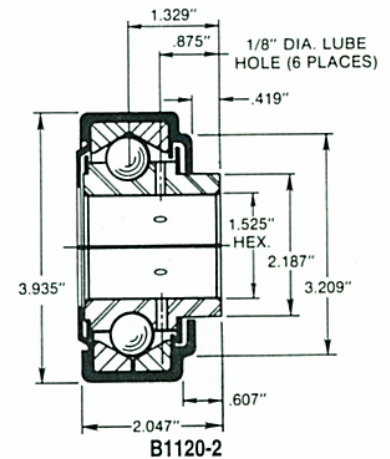
The B1120 is used primarily in powered equipment. It is recessed and can be used in high temperature and dusty applications. No shot guards are available for use with this bearing.

DESCRIPTION:

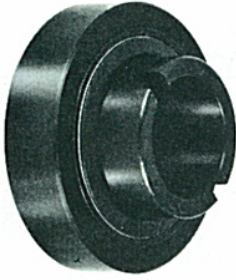
- Straight Faced Non-Precision Bearing
- 1-1/2" Hex Axle
- 3750# Per Bearing Load Rating
- Thirteen 5/8" Dia. Hardened Steel Balls
- Labyrinth Front and Back Shields
- Back Retaining Ring
- Pressed Steel Outer Shell
- Inner Race Drilled For Pressure Lubrication

BEARING INCLUDED:

Current Model No.	Old Number
B1120-2	1103, 110SB

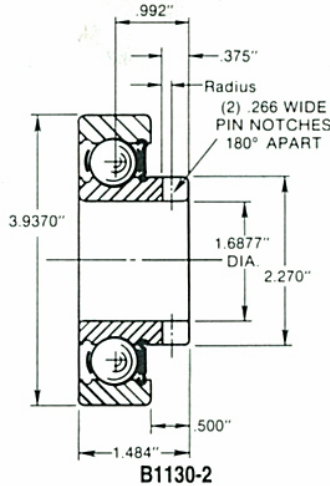


B1130 Series

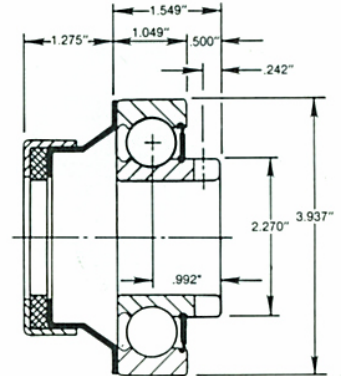


BEARINGS INCLUDED:

Current Model No.	Old Number
B1130-2	30900
B1131-2	30900



BEARINGS: (Continued)



B1131-2
With Loose Back Grease Retainer

DESCRIPTION:

- Straight Faced Precision Bearing
- 1-11/16" Dia. Shaft
- 5700# Per Bearing Load Rating
- Eight 11/16" Dia. Hardened Chrome Alloy Steel Balls
- Front Seal
- Ball Retainer
- Inner Race Notched For 1/4" Dia. Pin to Prevent Cone Rotation

USES:

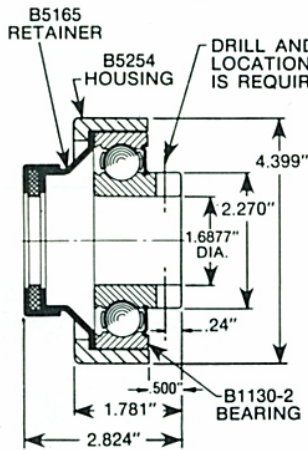
Used primarily in powered equipment requiring heavy load capacity, high speed, low noise and long life. It is grease packed and non-regreasable.

REPLACEMENT USE:

B1130-2 is available as a replacement for bearing #100BG and #10703. For details see the "Bearing Replacement Instructions" below.

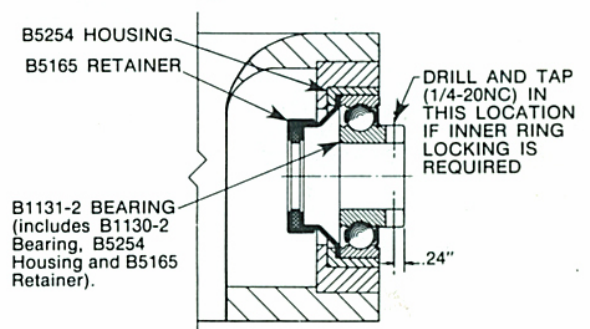
Bearing Replacement Instructions

For 100-BG Bearing Used with 5.56" Dia. x .750" Roller



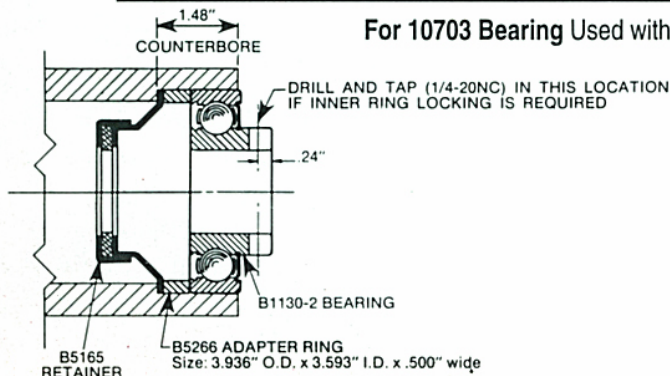
If there is a need for a direct and complete replacement for a 100-BG Bearing, order as B1131-2/100-BG. If this has been ordered before and the outer housing and back seal retainer are still good, then possibly only the B1130-2 Bearing will be required.

For 100-BG Bearing Used with 7.625" Dia. x .875" Roller



If there is a need for a direct and complete replacement for a 100-BG Bearing, order as B1131-2/100-BG. If this has been ordered before and the outer housing and back seal retainer are still good, then possibly only the B1130-2 Bearing will be required.

For 10703 Bearing Used with 5.0" Dia. x .71" Roller



If there is a need for a direct and complete replacement for a 10703 Bearing, order as B1131-2/10703. If this has been ordered before and the spacer and back seal are still good, then possibly only the B1130-2 Bearing will be required.

BEARINGS



B1140 Series

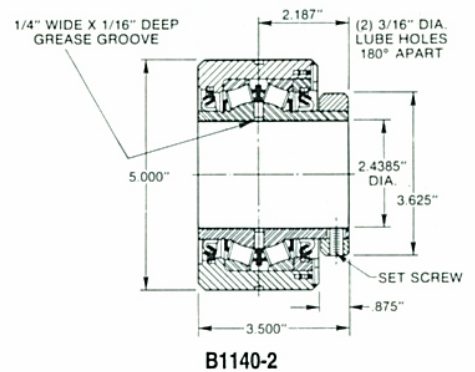


DESCRIPTION:

- Straight Faced Precision Bearing
- 2-7/16" Dia. Shaft
- 6500# Per Bearing Load Rating
- Double Row Self Aligning Roller Bearings
- Front and Back Seals
- Inner Race Drilled For Pressure Lubrication
- Collar with Set Screws to Prevent Cone Rotation
- Regreasable

BEARING INCLUDED:

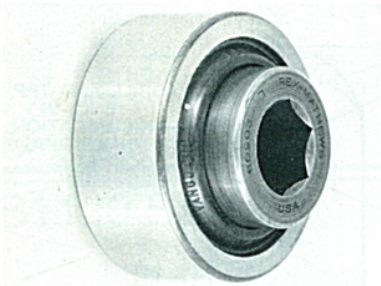
Current Model No.	Old Number
B1140-2	210



USES:

The B1140 is chosen primarily on the basis of load rating. It is the largest bearing in the Mathews line.

B1150 Series



USES:

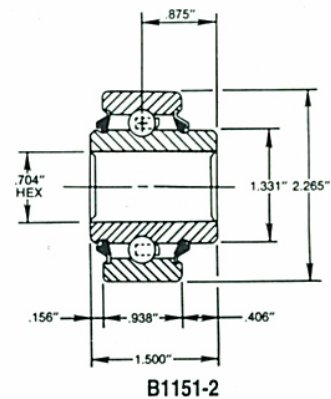
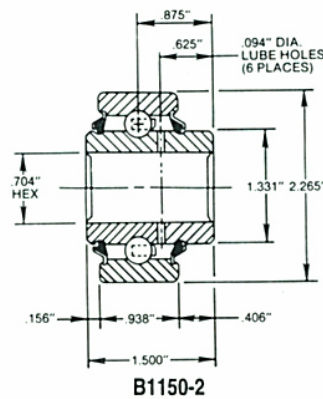
The B1150 is similar to the B1071. However, it has much greater load capacity, yet retains the axle size and O.D. of the B1071. It is also used where low noise levels and high operating speeds are required. It is grease packed.

BEARINGS INCLUDED:

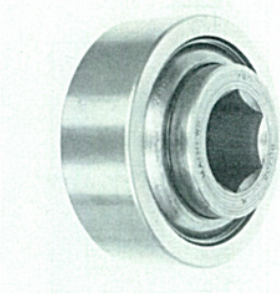
Current Model No.	Old Number
B1150-2	20508, 53-205
B1151-2	20506

DESCRIPTION:

- Straight Faced Precision Bearing
- 11/16" Hex Axle
- 2380# Per Bearing Load Rating
- Nine 5/16" Dia. Hardened Chrome Alloy Steel Balls
- Front and Back Seals
- Inner Race Drilled for Pressure Lubrication (B1150)



B1160 Series



BEARINGS INCLUDED:

Current Model No.	Old Number
B1160-2	20706
B1161-2	20708, 58-207

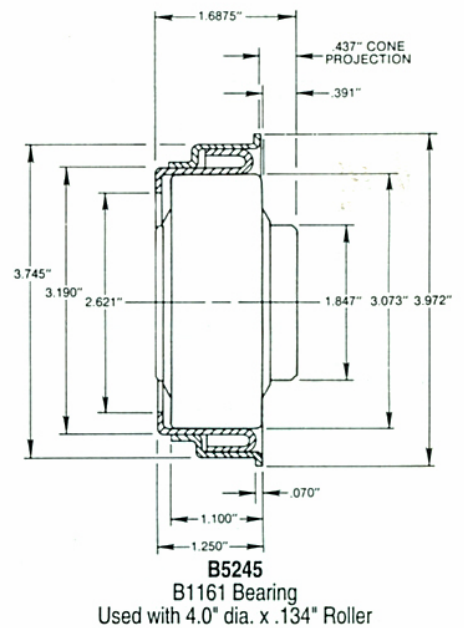
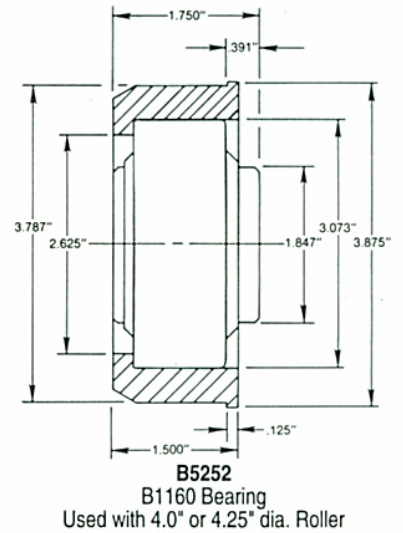
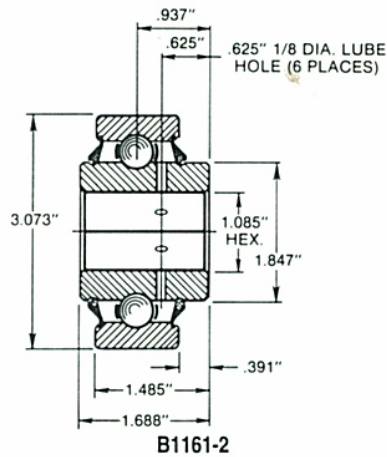
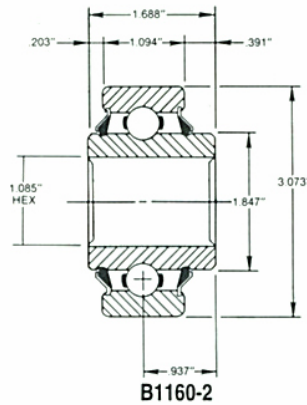
HOUSINGS:

DESCRIPTION:

- Straight Faced Precision Bearing
- 1-1/16" Hex Axle
- 4260# Per Bearing Load Rating
- Raceways Hardened and Ground
- Nine 7/16" Dia. Hardened Chrome Alloy Steel Balls
- Front and Back Seals
- Inner Race Drilled for Pressure Lubrication (B1161)

USES:

- The B1160 is similar to the B1080. It is used in powered applications where heavier load capacity, higher speeds and low noise levels are required. It is grease packed and non-regreasable.
- The B1161 is a regreasable bearing.



BEARINGS



B1210 Series



DESCRIPTION:

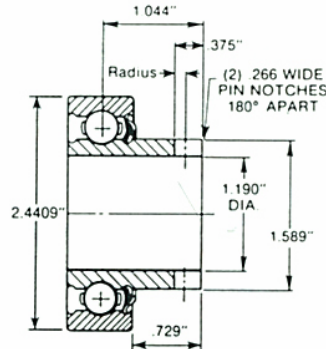
- Straight Faced Precision Bearing
- 1-3/16" Dia. Shaft
- 2100# Per Bearing Load Rating
- Nine 3/8" Dia. Hardened Chrome Alloy Steel Balls
- Ball Retainer
- Front and Back Seals
- Inner Race Notched For 1/4" Dia. Pin to Prevent Cone Rotation
- Can Be Pressure Regreasable

USES:

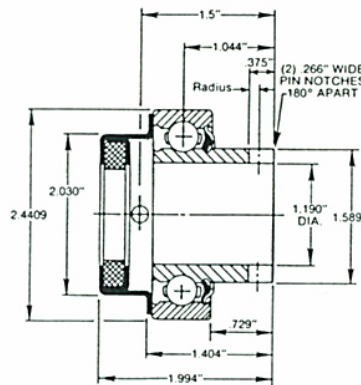
- Primary use is in powered equipment where low noise, high speed and long life are required.
- The B1210 is grease packed and non-regreasable.
- The B1211 is regreasable. The loose grease retainer is simply mounted in the counterbored tubing ahead of the bearing.

BEARINGS INCLUDED:

Current Model No.	Old Number
B1210-2	206J
B1211-2	206J

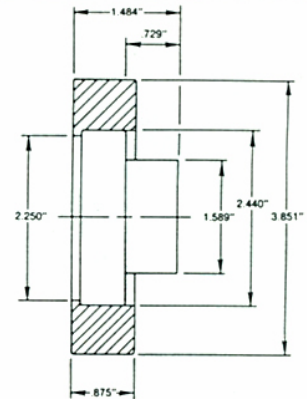


B1210-2
Without Grease Retainer

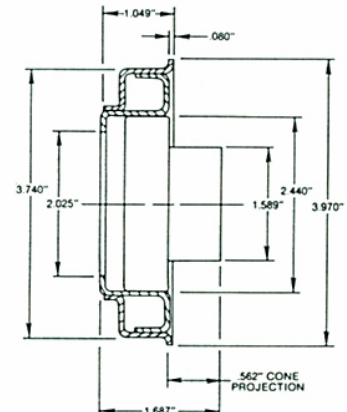


B1211-2
With Grease Retainer

HOUSINGS:

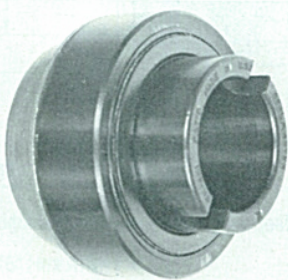


B5240
Used with 4.25" dia. x .250" Roller



B5242
Used with 4.25" dia. x .134" Roller

B1220 Series



DESCRIPTION:

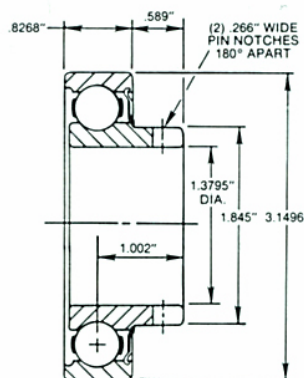
- Straight Faced Precision Bearing
- 1-3/8" Dia. Shaft
- 3770# Per Bearing Load Rating
- Eight 13/32" Dia. Hardened Chrome Alloy Steel Balls
- Ball Retainer
- Front Seal
- Inner Race Notched For 1/4" Dia. Pin to Prevent Cone Rotation

USES:

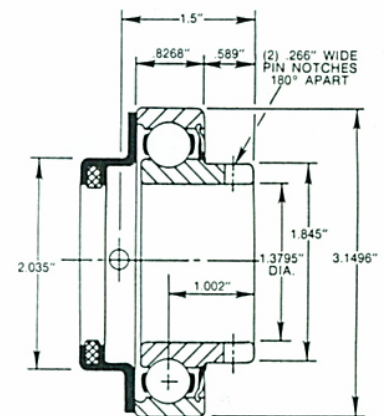
Primarily used in powered equipment where low noise, high speed and long life are required.

BEARINGS INCLUDED:

Current Model No.	Old Number
B1220-2	60A
B1221-2	60A

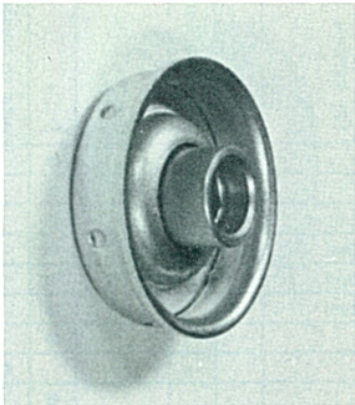


B1220-2
Without Grease Retainer



B1221-2
With Grease Retainer
● Back Seal ● Pressure Regreasable

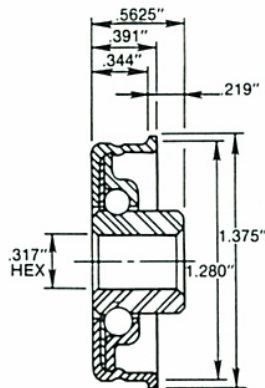
B1260 Series



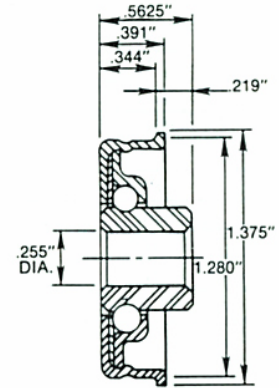
USES:

- Primarily gravity or push line conveyor rollers.
- B1260 is used for hex axle requirements.
- B1261 is used with a round shaft.

BEARINGS INCLUDED:



B1260-1



B1261-1
(1/4" Round)

Note: This bearing is only sold with a roller and is not available as a loose replacement.

DESCRIPTION:

- Flanged Type Non-Precision Bearing
- 5/16" Hex Axle (B1260)
- 1/4" Dia. Shaft (B1261)
- 40# Per Bearing Load Rating
- Eleven 5/32" Dia. Hardened Steel Balls
- Pressed Steel Outer Shell

B1270 Bearing



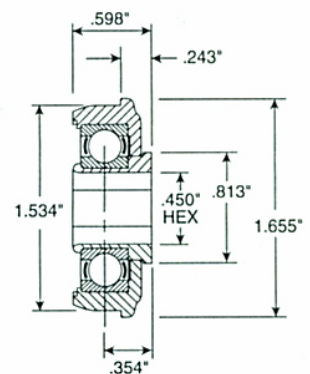
DESCRIPTION:

- Flanged Type Precision Bearing
- 7/16" Hex Axle
- 126# Per Bearing Load Rating
- Front and Back Seals
- Grease Packed. Not Regreasable
- Static Conductive Housing
- Temperature Range -20° F to 150° F.

USES:

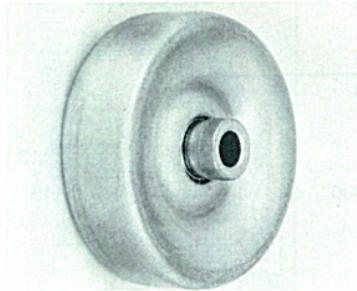
Used in powered equipment where high speed (over 200 FPM) and low noise levels are required.

BEARING INCLUDED:



B1270

B4000 Series

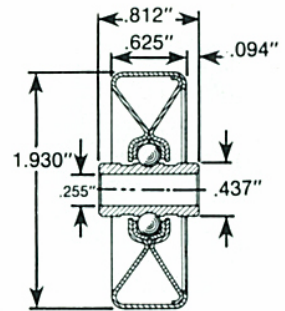


DESCRIPTION:

- Straight Faced Skate Wheel
- 60# Per Wheel Load Rating (B4000)
- 40# Per Wheel Load Rating (B4001)
- 1/4" Dia. Shaft
- Raceways Hardened
- Seven 1/4" Dia. Hardened Steel Balls
- Plated Inner Race and Pressed Outer Shell

WHEELS INCLUDED:

Current Model No.	Old Number
B4000-1	115 (Zinc Plated)
B4001-1	115A (Aluminum)



B4000-1
B4001-1

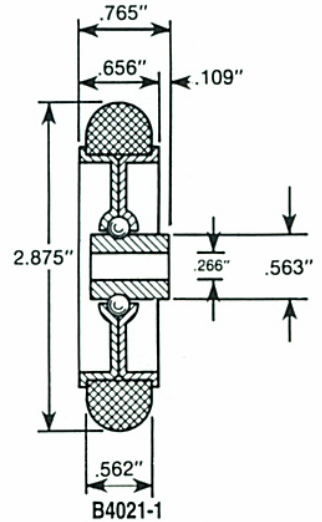


DESCRIPTION:

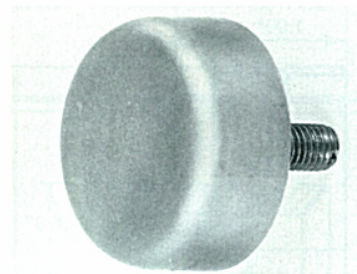
- Rubber Tire Wheel
- Oiled
- 20# Per Wheel Load Rating
- 1/4" Dia. Shaft
- Eleven 3/16" Dia. Hardened Steel Balls

WHEEL INCLUDED:

Current Model No.	Old Number
B4021-1	70RT



B4021-1

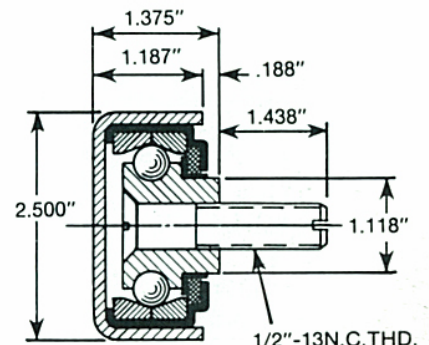


DESCRIPTION:

- Straight Faced Wheel
- 300# Per Wheel Load Rating
- 1/2" Bolt
- Raceways Hardened
- Twelve 3/8" Dia. Hardened Steel Balls
- Front Seal
- Back Bearing Sealed by Tire
- Integral Screw

WHEELS INCLUDED:

Current Model No.	Old Number
B4031-1	75AC
B4031-2	75ACG

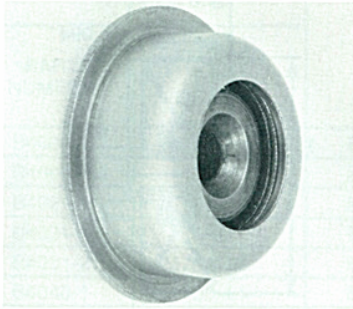


B4031-1
B4031-2

WHEELS



B4040 Series

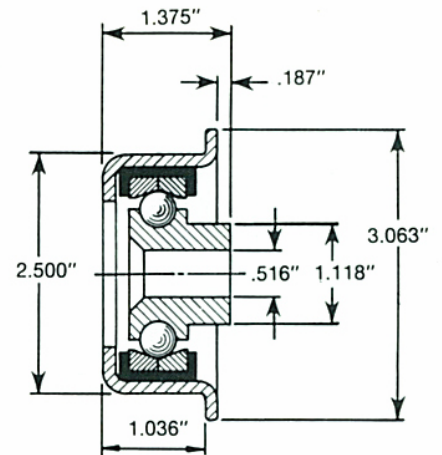


DESCRIPTION:

- Flanged Wheel
- 300# Per Wheel Load Rating
- 1/2" Dia. Shaft
- Raceways Hardened
- Twelve 3/8" Dia. Hardened Steel Balls

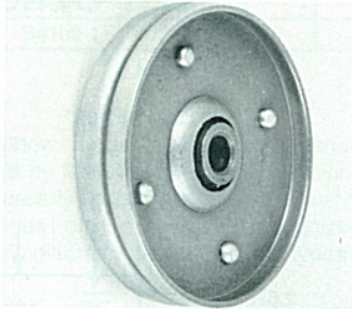
WHEEL INCLUDED:

Current Model No.	Old Number
B4040-1	75F-1



B4040-1

B4050 Series

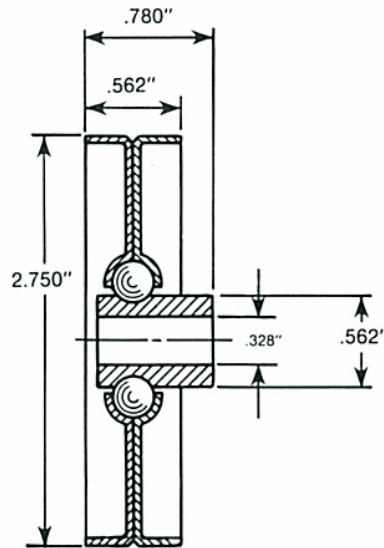


DESCRIPTION:

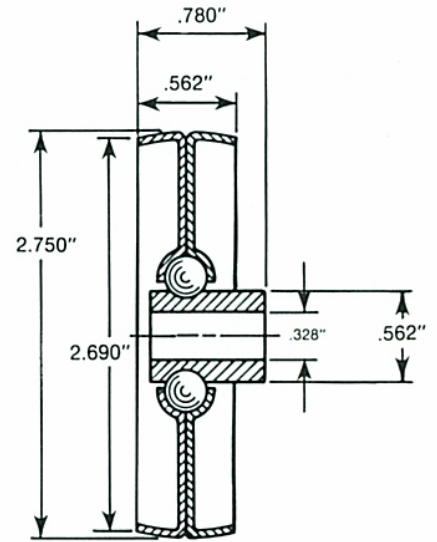
- 30# Per Wheel Load Rating
- 5/16" Dia. Shaft
- Raceways Hardened
- Eight 1/4" Dia. Hardened Steel Balls

WHEELS INCLUDED:

Current Model No.	Old Number
B4050-1	80
B4051-1	80C

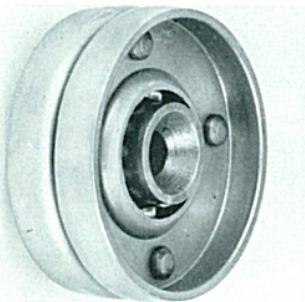


B4050-1



B4051-1
Made To Order

B4062 Series

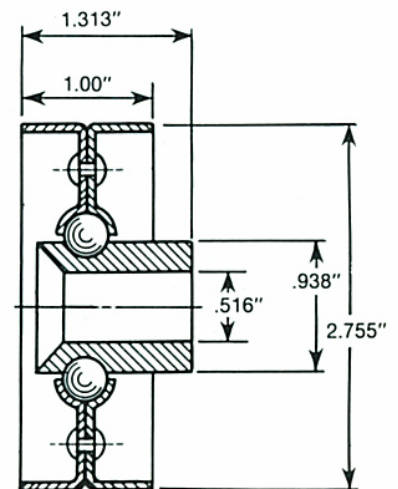


DESCRIPTION:

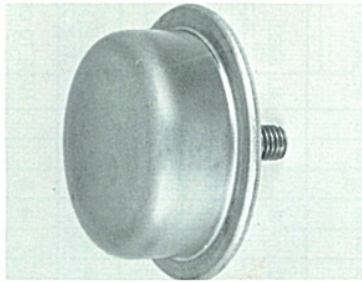
- Straight Faced Wheel
- 50# Per Wheel Load Rating
- 1/2" Dia. Shaft
- Raceways Hardened
- Eleven 5/16" Dia. Hardened Steel Balls

WHEEL INCLUDED:

Current Model No.	Old Number
B4062-1	84-2



B4062-1

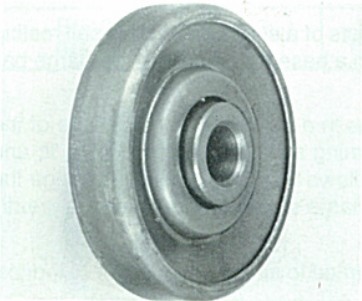
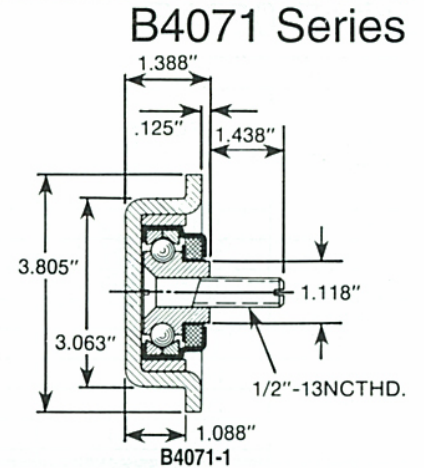


DESCRIPTION:

- Flanged Wheel
- 300# Per Wheel Load Rating
- 1/2" Bolt
- Raceways Hardened
- Twelve 3/8" Dia. Hardened Steel Balls
- Front Seal
- Back Bearing Sealed by Tire
- Integral Screw

WHEEL INCLUDED:

Current Model No.	Old Number
B4071-1	FF452A



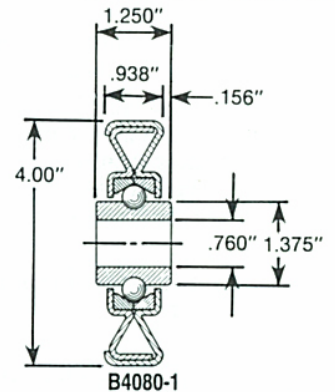
DESCRIPTION:

- Straight Faced Wheel
- 300# Per Wheel Load Rating
- 3/4" Dia. Shaft
- Raceways Hardened
- Twelve 3/8" Dia. Hardened Steel Balls

WHEEL INCLUDED:

Current Model No.	Old Number
B4080-1	524

B4080 Series



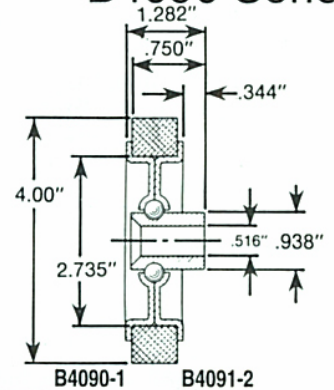
DESCRIPTION:

- 50# Per Wheel Load Rating
- 1/2" Dia. Shaft
- Raceways Hardened
- Eleven 5/16" Dia. Hardened Steel Balls

WHEELS INCLUDED:

Current Model No.	Old Number
B4090-1	844RT (Neoprene Tire)
B4091-1	844M (Micarta Tire)

B4090 Series



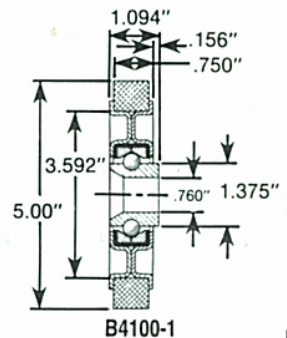
DESCRIPTION:

- Micarta Tire Wheel
- 100# Per Wheel Load Rating
- 3/4" Dia. Shaft
- Raceways Hardened
- Twelve 3/8" Dia. Hardened Steel Balls

WHEEL INCLUDED:

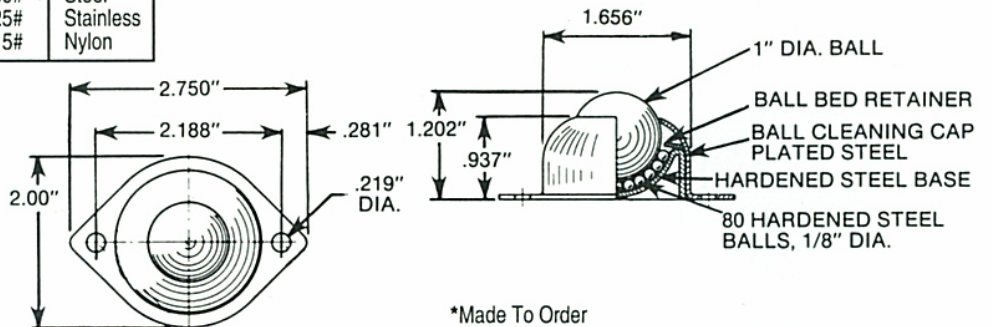
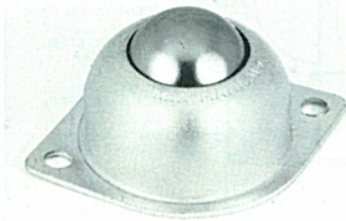
Current Model No.	Old Number
B4100-1	552CM (Micarta Tire)

B4100 Series



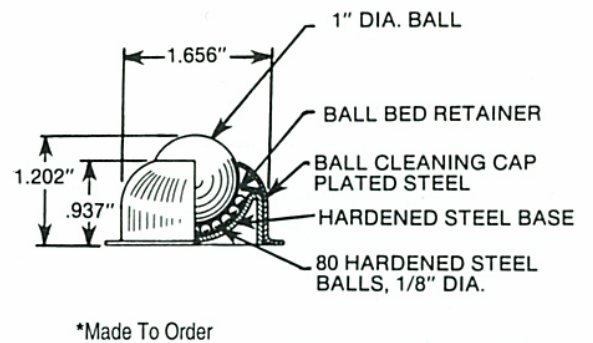
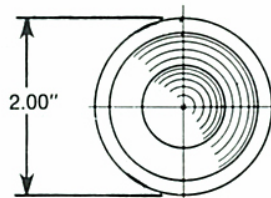
B4500 Series

Current Model No.	Old Number	Rating	Material
B4500	101	50#	Steel
B4501	141	125#	Stainless
B4502*	101N	5#	Nylon



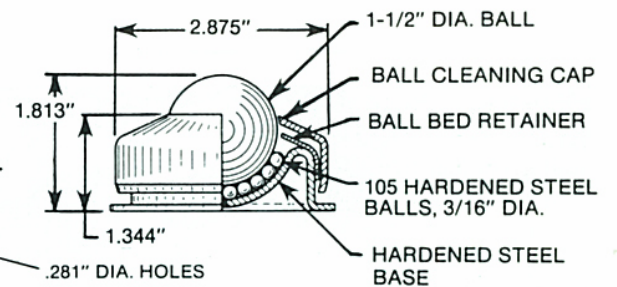
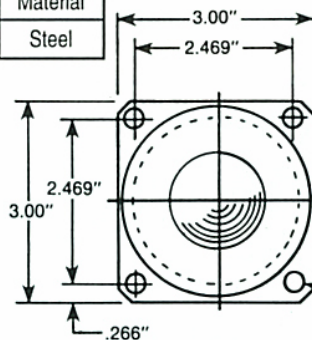
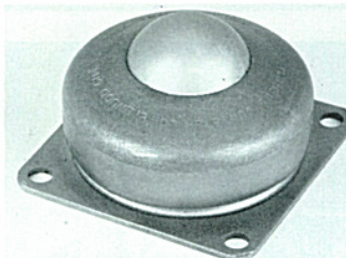
B4510 Series

Current Model No.	Old Number	Rating	Material
B4510*	102	50#	Steel
B4511	142	125#	Stainless



B4520 Series

Current Model No.	Old Number	Rating	Material
B4520	201A	100#	Steel



B4530 Series

Current Model No.	Old Number	Rating
B4530	202A	100#

