

Snap-Loc Systems

*Adjustable Length And
Interchangeable
Components*



WILTON
VERTICAL

Snap-Loc Systems

Adjustable Length And Interchangeable Components With Easy Hand Assembly

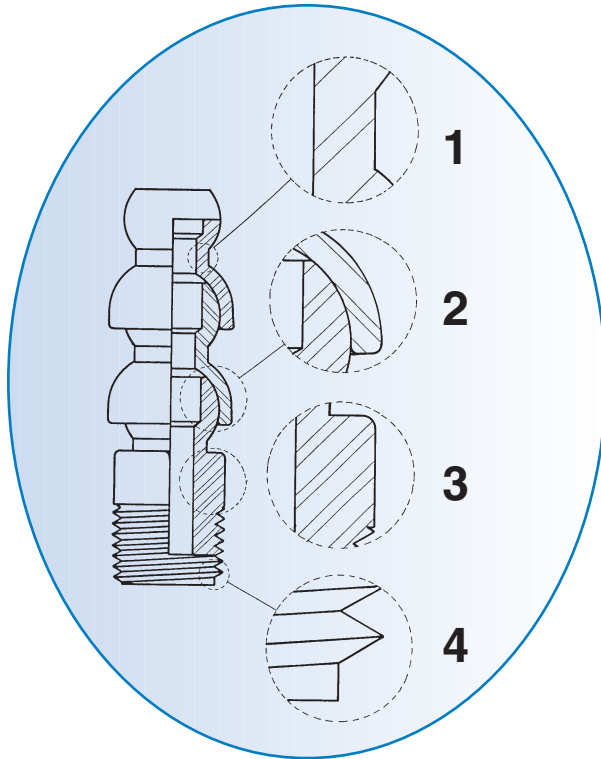


Fig. 1 Heavy-Duty Construction

Industrial grade wall thickness provides durable parts with long lasting performance.

Fig. 2 Bearing Surface & Snap Fit

Contribute to outstanding performance with respect to “jetting” and holding power. Snap-Loc Systems are designed for normal shop air and fluid pressures.

Fig. 3 Solid Hex Design

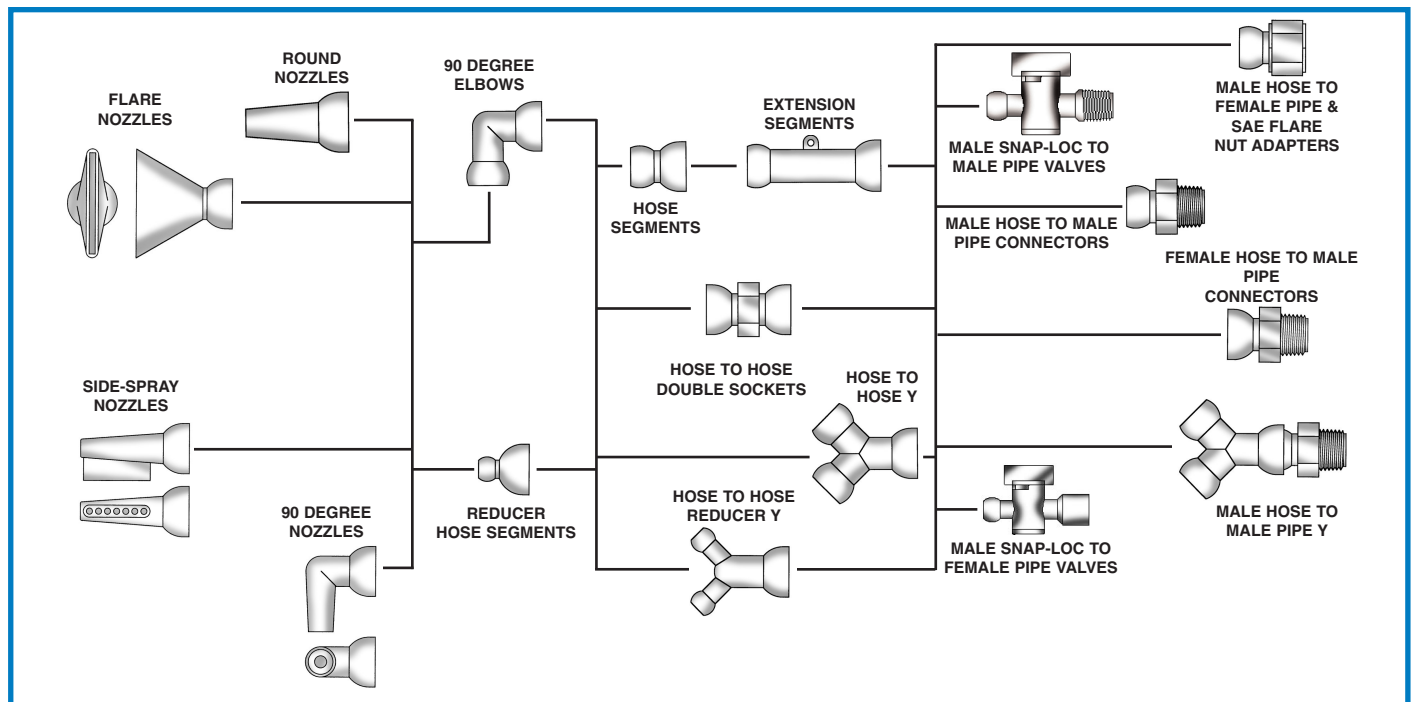
This solid hex design is superior to a ribbed design because it has less tendency to strip.

Fig. 4 Durable Thread Design

Cedarberg Snap-Loc Systems have milled, not turned, threads. This results in better starting threads, and less cross threading. Threads are easier to re-use.

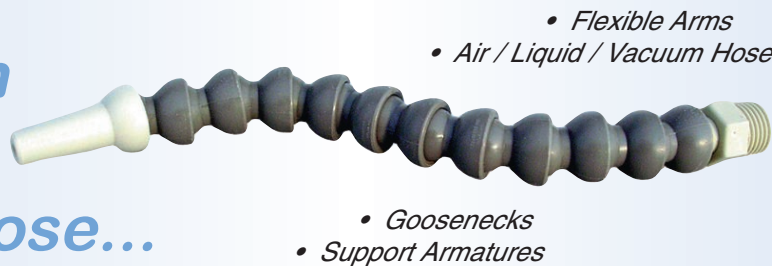
FEATURES:

- Industrial Grade
- Adjustable Length
- Easy Hand Assembly
- Unrestricted Flow
- No Vibration Wandering
- Chemical Resistance
- Electrically Non-Conductive
- 3-Dimensional Adjustability



Snap-Loc Systems

*More Than
Just A
Coolant Hose...*



...An Element Of Ingenuity.

MORE THAN JUST A COOLANT HOSE...

- Since the beginning, Cedarberg Snap-Loc Systems have served metalworking industries world-wide. However, the 3-dimensional flexibility and holding power of our design serves well in a wide range of applications. We work with product designers in many fields because our Snap-Loc Systems are...
...An Element of Ingenuity.

INTERCHANGEABLE COMPONENTS:

- Snap-Loc components are interchangeable; Reducers are available for 3/4" to 1/2" hose, and for 1/2" to 1/4" hose, allowing for the use of all three hose sizes in a single installation.

EASY HAND ASSEMBLY:

- Snap-Loc assembly and disassembly is fast and easy. Assembly Pliers are available for the 1/4" and 1/2" Systems. The Universal Assembly Tool can be used for assembly of 1/4", 1/2" and 3/4" Systems. Separation Wedges for each of the three hose sizes simplify disassembly (Pg. 10).

HOSE BEND CAPABILITIES:

- Snap-Loc hose may be bent to form tight turns. Minimum center-line diameters are as follows:
 - 1/4" Hose; 2" center-line diameter
 - 1/2" Hose; 3-1/4" center-line diameter
 - 3/4" Hose; 5-1/4" center-line diameter

MATERIALS:

- Standard Snap-Loc Hose and Connector material is Delrin. Standard Nozzle material is polypropylene. Consult factory for alternate material availability.

CHEMICAL RESISTANCE:

- Delrin exhibits superior chemical resistance to alcohols, aldehydes, esters, ethers, hydrocarbons (gasolines, lubricants, hydraulic fluid), agricultural chemicals, many weak acids and bases.
- Polypropylene provides good chemical resistance to a wide variety of chemical products, including alkalies, solvents, as well as acids.

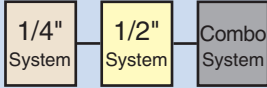
WORKING PRESSURES:

- Snap-Loc Systems components are designed for normal shop air and fluid pressures. They are not intended for high pressure applications. Maximum operating pressure is dependent upon many factors, including temperature of solution, hose and nozzle size, and whether pressure is induced slowly or instantaneously.

WORKING TEMPERATURES:

- Maximum recommended working Temperature for Snap-Loc Systems is approximately 200° F (93°C).

The Pac



For Coolant Hose Set-Up And Quick Maintenance

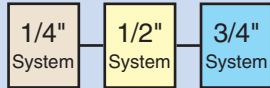


CAT. NO.	PRICE	QTY	DESCRIPTION	CODE
8525-282	59.12		Kit Includes:	AB
		4	1/4" x 12" Hose Assy	
		1	1/4" Extension Segment	
		2	1/16" Round Nozzle	
		2	1/8" Round Nozzle	
		2	1/4" Round Nozzle	
		2	1" Flare Nozzle	
		3	1/8" Connector	
		3	1/4" Connector	
		2	1/4" Y	
		1	1/4" Double Socket	
		1	1/4" Assembly Pliers	

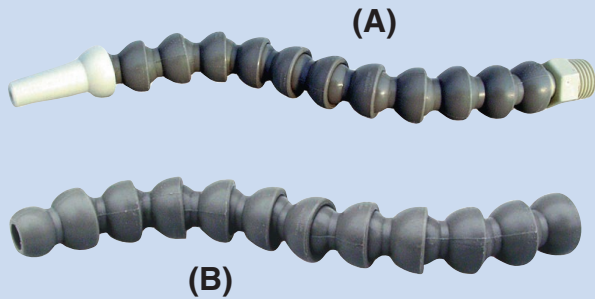
CAT. NO.	PRICE	QTY	DESCRIPTION	CODE
8550-321	71.88		Kit Includes:	AB
		4	1/2" x 12" Hose Assy	
		1	1/2" Extension Segment	
		2	1/4" Round Nozzle	
		2	3/8" Round Nozzle	
		2	1/2" Round Nozzle	
		2	2" Flare Nozzle	
		3	3/8" Connector	
		3	1/2" Connector	
		2	1/2" Y	
		1	1/2" Y X 1/4" Reducer Y	
		1	1/2" Double Socket	
		1	1/2" x 1/4" Adapter	
		1	1/2" Assembly Pliers	

CAT. NO.	PRICE	QTY	DESCRIPTION	CODE
8550-322	120.78		Kit Includes:	AB
		3	1/4" x 12" Hose Assy	
		3	1/2" x 12" Hose Assy	
		1	1/4" Extension Segment	
		1	1/2" Extension Segment	
		2	1/4" x 1/16" Round Nozzle	
		2	1/4" x 1/8" Round Nozzle	
		2	1/4" x 1/4" Round Nozzle	
		2	1/2" x 1/4" Round Nozzle	
		2	1/2" x 3/8" Round Nozzle	
		2	1/2" x 1/2" Round Nozzle	
		2	1/4" x 1" Flare Nozzle	
		2	1/2" x 2" Flare Nozzle	
		3	1/4" x 1/8" Connector	
		3	1/4" x 1/4" Connector	
		3	1/2" x 3/8" Connector	
		3	1/2" x 1/2" Connector	
		1	1/4" Y	
		1	1/2" Y	
		1	1/2" x 1/4" Reducer Y	
		1	1/4" Double Socket	
		1	1/2" Double Socket	
		1	1/2" x 1/4" Adapter	
		1	1/4" Assembly Pliers	
		1	1/2" Assembly Pliers	

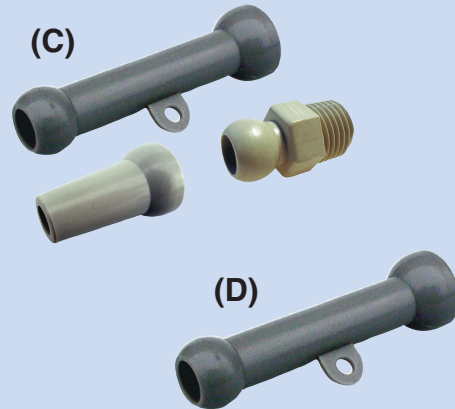
Hose Assemblies & Parts



Hose Assemblies & Segments



Extension Assemblies & Segments



CAT. NO.	PRICE	DESCRIPTION	FIG. CODE
8425-11	10.14	Hose Assembly (A) (Approx. 13") Set Includes: 1/16", 1/8", 1/4" Nozzles; 1/8", 1/4" NPT Connectors	A
8525-157	10.14	Hose Assembly (A) (Approx. 13") Set Includes: 1/16", 1/8", 1/4" Nozzles; 1/8", 1/4" BSPT Conn	A
8425-12	8.09	12" Segment Pac (B)	A
8425-21	16J.JI	25 Ft. Bulk Pac (B)	A
8425-22	3G.IJ	50 Ft. Bulk Pac (B)	A
8525-228	6H.II	100 Ft. Bulk Pac (B)	A
8425-170	8.29	12" Segment Pac (Blk) (B)	A
8425-118	16J.II	25 Ft. Bulk (Black) (B)	A
8425-119	3G.II	50 Ft. Bulk (Black) (B)	A
8425-120	6H.II	100 Ft. Bulk (Black) (B)	A

CAT. NO.	PRICE	DESCRIPTION	FIG. CODE
8450-11	11.1 F	Hose Assembly (A) (Approx. 13") Set Includes: 1/4", 3/8", 1/2" Nozzles; 3/8", 1/2" NPT Connectors	A
8550-175	11.1 F	Hose Assembly (A) (Approx. 13") Set Includes: 1/4", 3/8", 1/2" Nozzles; 3/8", 1/2" BSPT Connectors	A
8450-12	9.I G	12" Segment Pac (B)	A
8450-21	19J.II	25 Ft. Bulk Pac (B)	A
8450-22	3I.II	50 Ft. Bulk Pac (B)	A
8550-211	7I.II	100 Ft. Bulk Pac (B)	A
8450-155	9.I G	12" Segment Pac (Blk) (B)	A
8450-118	200.54	25 Ft. Bulk (Black) (B)	A
8450-119	3I.II	50 Ft. Bulk (Black) (B)	A
8450-120	7I.II	100 Ft. Bulk (Black) (B)	A

CAT. NO.	PRICE	DESCRIPTION	FIG. CODE
8475-11	14.1 I	Hose Assembly (A) (Approx. 12-1/2") Set Includes: 5/8" Nozzle; 3/4" NPT Connector	A
8475-11	14.1 I	Hose Assembly (A) (Approx. 12-1/2") Set Includes: 5/8" Nozzle; 3/4" BSPT Connector	A
8475-12	12.00	2-1/2" Seg Pac (B)	A
8475-21	265.00	25 Ft. Bulk Pac (B)	A
8475-22	530.10	50 Ft. Bulk Pac (B)	A
8475-29	1060.00	100 Ft. Bulk Pac (B)	A
8475-118	265.00	5 Ft. Bulk (Black) (B)	A
8475-119	530.00	50 Ft. Bulk (Black) (B)	A
8475-120	1060.00	G 100 Ft. Bulk (Black) (B)	A

CAT. NO.	PRICE	DESCRIPTION	FIG. CODE
8425-154	1H.EJ	Extension Assembly (C) (Approx. 12") Set Includes: 1/16", 1/8", 1/4" Nozzles; 1/8", 1/4" NPT Connectors	AB
8425-154	1H.EJ	Extension Assembly (C) (Approx. 12") Set Includes: 1/16", 1/8", 1/4" Nozzles; 1/8", 1/4" BSPT Connectors	AB
8425-160	11.I G	Extn Seg Pac of 6 (D)	AB
8425-161	4I.II	Extn Seg Bag of 25 (D)	AB

CAT. NO.	PRICE	DESCRIPTION	FIG. CODE
8450-161	14.1 I	Extension Assembly (C) (Approx. 12") Set Includes: 1/4", 3/8", 1/2" Nozzles; 3/8", 1/2" NPT Connector	AB
8450-161	14.1 I	Extension Assembly (C) (Approx. 12") Set Includes: 5/8" Nozzles; 3/4" BSPT Connectors	AB
8450-162	12.I G	Extn Seg Pac of 5 (D)	AB
8450-163	51.15	Extn Seg Bag of 25 (D)	AB

CAT. NO.	PRICE	DESCRIPTION	FIG. CODE
8475-54	16.1 I	Extension Assembly (C) (Approx. 12") Set Includes: 5/8" Nozzles; 3/4" NPT Connector	AB
8475-54	16.1 I	Extension Assembly (C) (Approx. 12") Set Includes: 5/8" Nozzles; 3/4" BSPT Connectors	AB
8475-55	16.00	Extn Seg Pac of 5 (D)	AB
8475-56	80.00	Extn Seg Bag of 25 (D)	AB

- Extension Segments (See Figs. C-D) may be used for fewer connections on long assemblies.
- All Extension Segments have a convenient eyelet for attaching to surrounding structures for extra long assemblies.
- Extension Assemblies also available with BSPT Connectors

Standard Material: Delrin 500
Polypropylene Available: Consult Factory
Standard Color: NPT Connectors Light Gray, BSPT Connectors Dark Gray, Hose Segments Dark Gray
 Other Colors Available (Consult Factory)

Round & Flare Nozzles, 90° Fittings



CAT. NO.	PRICE	DESCRIPTION	CODE
8425-13	8.09	Nozzle Assortment Pac (1 each) 1/16", 1/8", 1/4" Round, 1" Flare 1/16" Nozzle	A
8425-14	5.11	Pac of 4	A
8425-23	4J€G	Bag of 50	A
8425-110	4J€G	Bag of 50 (Yellow)	A
8425-114	4J€G	Bag of 50 (Orange)	A
8525-237	5.65	Pac of 4 (Delrin Dk Gray)	A
8525-240	49.89	Bag of 50 (Delrin Dk Gray) 1/8" Nozzle	A
8425-15	5.65	Pac of 4	A
8425-24	49.52	Bag of 50	A
8425-111	49.52	Bag of 50 (Yellow)	A
8425-115	49.52	Bag of 50 (Orange)	A
8525-238	5.11	Pac of 4 (Delrin Dk Gray)	A
8525-241	4J€J	Bag of 50 (Delrin Dk Gray) 1/4" Nozzle	A
8425-16	5.11	Pac of 4	A
8425-25	4J€G	Bag of 50	A
8425-112	4J€G	Bag of 50 (Yellow)	A
8425-116	49.52	Bag of 50 (Orange)	A
8525-239	5.11	Pac of 4 (Delrin Dk Gray)	A
8525-242	4J€J	Bag of 50 (Delrin Dk Gray)	A

CAT. NO.	PRICE	DESCRIPTION	CODE
8450-13	9.1€	Nozzle Assortment Pac (1 each) 1/4", 3/8", 1/2" Round, 2" Flare 1/4" Nozzle	A
8450-14	5.11	Pac of 4	A
8450-23	51€J	Bag of 50	A
8450-110	51€J	Bag of 50 (Yellow)	A
8450-114	51€J	Bag of 50 (Orange)	A
8550-230	5.JF	Pac of 4 (Delrin Dk Gray)	A
8550-233	51€J	Bag of 50 (Delrin Dk Gray) 3/8" Nozzle	A
8450-15	5.11	Pac of 4	A
8450-24	51€J	Bag of 50	A
8450-111	51€J	Bag of 50 (Yellow)	A
8450-115	51€J	Bag of 50 (Orange)	A
8550-231	5.JF	Pac of 4 (Delrin Dk Gray)	A
8550-234	51€J	Bag of 50 (Delrin Dk Gray) 1/2" Nozzle	A
8450-16	5.11	Pac of 4	A
8450-25	51€J	Bag of 50	A
8450-112	51€J	Bag of 50 (Yellow)	A
8450-116	51€J	Bag of 50 (Orange)	A
8550-232	5.JF	Pac of 4 (Delrin Dk Gray)	A
8550-235	51€J	Bag of 50 (Delrin Dk Gray)	A

CAT. NO.	PRICE	DESCRIPTION	CODE
8475-16	7.FI	Pac of 4 (Delrin Dk Gray)	A
8475-25	6J€8	Bag of 50 (Delrin Dk Gray)	A
8475-149	6J€8	Bag of 50 (Orange)	A

Standard Material: Polypropylene
Delrin 500 Available: Consult Factory
Standard Color: Light Gray, Other Colors Available

CAT. NO.	PRICE	DESCRIPTION	CODE
8425-19	9.29	1" Flare Nozzle Pac of 2	A
8425-28	6F€F	Bag of 25	A
8425-113	61.13	Bag of 25 (Yellow)	A
8425-117	61.13	Bag of 25 (Orange)	A
8525-250	8.29	Pac of 2 (Delrin Dk Gray)	A
8525-251	61.71	Bag of 25 (Delrin Dk Gray)	A

CAT. NO.	PRICE	DESCRIPTION	CODE
8450-19	9.8G	2" Flare Nozzle Pac of 2	A
8450-28	81.40	Bag of 25	A
8450-113	81.24	Bag of 25 (Yellow)	A
8450-117	81.29	Bag of 25 (Orange)	A
8550-224	9.1G	Pac of 2 (Delrin Dk Gr)	A
8550-225	81.40	Bag of 25 (Delrin Dk Gray)	A

CAT. NO.	PRICE	DESCRIPTION	CODE
8475-19	11.1F	3" Flare Nozzle Pac of 2	A
8475-28	10I€I	Bag of 25	A
8475-148	1€€I	Bag of 25 (Orange)	A
8475-106	11.1F	Pac of 2 (Delrin Dk Gray)	A
8475-107	10I.1I	Bag of 25 (Delrin Dk Gray)	A

CAT. NO.	PRICE	DESCRIPTION	CODE
8425-181	1€€G	1/4" 90° Elbow; Female Hose x Male Hose Pac of 2	AB
8425-182	6I€S	Bag of 25	AB

CAT. NO.	PRICE	DESCRIPTION	CODE
8450-196	7.JI	1/2" 90° Elbow; Female Hose x Male Hose Pac of 2	AB
8450-197	7I€G	Bag of 25	AB

CAT. NO.	PRICE	DESCRIPTION	CODE
8475-136	8.50	3/4" 90° Elbow; Female Hose x Male Hose Pac of 2	AB
8475-137	85.00	Bag of 25	AB

CAT. NO.	PRICE	DESCRIPTION	CODE
8425-183	5.JF	90° Nozzles 1/4" x 1/8" 90° Nozzles Pac of 2	AC
8425-184	4I€I	1/4" x 1/8" 90° Nozzles Bag of 25	AC
8425-185	5.11	1/4" x 1/4" 90° Nozzles Pac of 2	AC
8425-186	4I€I	1/4" x 1/4" 90° Nozzles Bag of 25	AC

CAT. NO.	PRICE	DESCRIPTION	CODE
8450-198	6.1€	90° Nozzles 1/2" x 1/4" 90° Nozzles Pac of 2	AC
8450-199	4J€J	1/2" x 1/4" 90° Nozzles Bag of 25	AC
8450-200	6.1€	1/2" x 3/8" 90° Nozzles Pac of 2	AC
8450-201	4J€J	1/2" x 3/8" 90° Nozzles Bag of 25	AC

CAT. NO.	PRICE	DESCRIPTION	CODE
8475-138	8.1€	90° Nozzles 3/4" x 5/8" 90° Nozzles Pac of 2	AC
8475-139	85.00	3/4" x 5/8" 90° Nozzles Bag of 25	AC

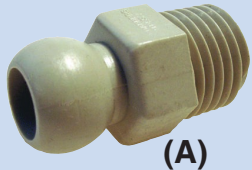
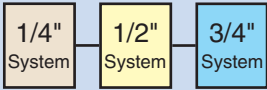
BENEFITS - 90° FITTINGS:
 • Excellent for tight turns where space is limited.

CAT. NO.	PRICE	DESCRIPTION	CODE
8425-187	7.1I	Side Spray Nozzles 1/4" Side Spray Nozzles Pac of 2	AC
8425-188	1€€I	1/4" Side Spray Nozzles Bag of 25	AC

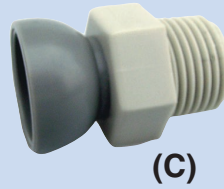
CAT. NO.	PRICE	DESCRIPTION	CODE
8450-202	8.1€	Side Spray Nozzles 1/2" Side Spray Nozzles Pac of 2	AC
8450-203	1€€I	1/2" Side Spray Nozzles Bag of 25	AC

CAT. NO.	PRICE	DESCRIPTION	CODE
8475-140	9.1€	Side Spray Nozzles 3/4" Side Spray Nozzles Pac of 2	AC
8475-141	95.00	3/4" Side Spray Nozzles Bag of 25	AC

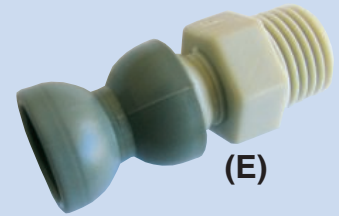
Connectors



(A)



(C)



(E)



(B)

Connectors

CAT. NO.	PRICE	DESCRIPTION	FIG. CODE
		Male Hose to Male Pipe Thread Connector (A)	
8425-17	5.11	1/8" NPT Pac of 4	A
8425-26	51.21	1/8" NPT Bag of 50	A
8425-18	5.11	1/4" NPT Pac of 4	A
8425-27	51.21	1/4" NPT Bag of 50	A
8525-177	5.11	1/8" BSPT Pac of 4	A
8525-178	1 FEI	1/8" BSPT Bag of 50	A
8525-179	5.11	1/4" BSPT Pac of 4	A
8525-180	1 FEI	1/4" BSPT Bag of 50	A

CAT. NO.	PRICE	DESCRIPTION	FIG. CODE
		Male Hose to Female Pipe Thread Connector (B)	
8525-199	9.00	1/8" FPT Pac of 4	A
8525-200	100.00	1/8" FPT Bag of 50	A
8525-197	9.00	1/4" FPT Pac of 4	A
8525-198	100.00	1/4" FPT Bag of 50	A

CAT. NO.	PRICE	DESCRIPTION	FIG. CODE
		Female Hose to Male Pipe Thread Connector (E)	
8525-103A	8.29	1/8" NPT Pac of 2	A
8525-130A	81 EG	1/8" NPT Bag of 25	A
8525-104A	8.09	1/4" NPT Pac of 2	A
8525-131A	81 EG	1/4" NPT Bag of 25	A
8525-167A	8.09	1/8" BSPT Pac of 2	A
8525-191A	81 EG	1/8" BSPT Bag of 25	A
8525-170A	8.09	1/4" BSPT Pac of 2	A
8525-192A	81 EG	1/4" BSPT Bag of 25	A

Standard Material: Delrin 500
 Polypropylene Available: Consult Factory
 Standard Color: NPT Connectors Light Gray, BSPT Connectors Dark Gray, Hose Segments Dark Gray

CAT. NO.	PRICE	DESCRIPTION	FIG. CODE
		Male Hose to Male Pipe Thread Connector (A)	
8450-17	5.11	3/8" NPT Pac of 4	A
8450-26	60.00	3/8" NPT Bag of 50	A
8450-18	5.11	1/2" NPT Pac of 4	A
8450-27	60.00	1/2" NPT Bag of 50	A
8550-164	5.11	3/8" BSPT Pac of 4	A
8550-165	60.00	3/8" BSPT Bag of 50	A
8550-166	5.11	1/2" BSPT Pac of 4	A
8550-167	60.00	1/2" BSPT Bag of 50	A

CAT. NO.	PRICE	DESCRIPTION	FIG. CODE
		Male Hose to Female Pipe Thread Connector (B)	
8550-188	1 FEJ	1/2" FPT Pac of 4	A
8550-189	110.00	1/2" FPT Bag of 50	A

CAT. NO.	PRICE	DESCRIPTION	FIG. CODE
		Female Hose to Male Pipe Thread Connector (C)	
8550-104	9.1 G	3/8" NPT Pac of 2	A
8550-135	8J EG	3/8" NPT Bag of 25	A
8550-105	9.1 G	1/2" NPT Pac of 2	A
8550-136	89.22	1/2" NPT Bag of 25	A
8550-180	9.1 G	3/8" BSPT Pac of 2	A
8550-186	8J EG	3/8" BSPT Bag of 25	A
8550-181	9.1 G	1/2" BSPT Pac of 2	A
8550-187	8J EG	1/2" BSPT Bag of 25	A

Standard Material: Delrin 500
 Polypropylene Available: Consult Factory
 Standard Color: NPT Connectors Light Gray, BSPT Connectors Dark Gray, Hose Segments Dark Gray

CAT. NO.	PRICE	DESCRIPTION	FIG. CODE
		Male Hose to Male Pipe Thread Connector (A)	
8475-18	7. FI	3/4" NPT Pac of 4	A
8475-27	6J EI	3/4" NPT Bag of 50	A
8475-18	7. FI	3/4" BSPT Pac of 4	A
8475-27	6J EI	3/4" BSPT Bag of 50	A

CAT. NO.	PRICE	DESCRIPTION	FIG. CODE
		Female Hose to Male Pipe Thread Connector (C)	
8475-112	13.09	3/4" NPT Pac of 2	A
8475-113	141 EG	3/4" NPT Bag of 25	A

Standard Material: Delrin 500
 Polypropylene Available: Consult Factory
 Standard Color: NPT Connectors Light Gray, BSPT Connectors Dark Gray, Hose Segments Dark Gray

Valves

1/4"
System

1/2"
System

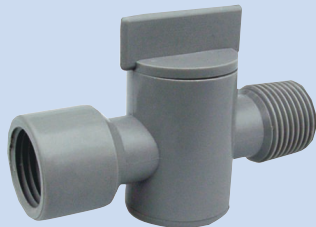


Plastic Snap-Loc Valves



CAT. NO.	PRICE	DESCRIPTION	CODE	CAT. NO.	PRICE	DESCRIPTION	CODE
8525-342	7.86	1/4" Male Snap-Loc x 1/4" Male NPT Black (1)	L	8525-344	7.11	1/4" Male Snap-Loc x 1/4" Female NPT Black (1)	L
8525-334	12.11	1/4" Male Snap-Loc x 1/4" Male NPT Black (2)	L	8525-340	12.11	1/4" Male Snap-Loc x 1/4" Female NPT Black (2)	L
8525-335	51	1/4" Male Snap-Loc x 1/4" Male NPT Black (10)	L	8525-341	51	1/4" Male Snap-Loc x 1/4" Female NPT Black (10)	L
8525-343	7.11	1/4" Male Snap-Loc x 1/4" Male BSPT Dk Gray (1)	L	8525-345	7.11	1/4" Male Snap-Loc x 1/4" Female BSPT Dk Gray (1)	L
8525-338	12.11	1/4" Male Snap-Loc x 1/4" Male BSPT Dk Gray (2)	L	8525-336	12.11	1/4" Male Snap-Loc x 1/4" Female BSPT Dk Gray (2)	L
8525-339	51	1/4" Male Snap-Loc x 1/4" Male BSPT Dk Gray (10)	L	8525-337	51	1/4" Male Snap-Loc x 1/4" Female BSPT Dk Gray (10)	L
8550-398	9.18	1/2" Male Snap-Loc x 1/2" Male NPT Black (1)	L	8550-400	9.18	1/2" Male Snap-Loc x 1/2" Female NPT Black (1)	L
8550-388	15.1H	1/2" Male Snap-Loc x 1/2" Male NPT Black (2)	L	8550-394	15.1H	1/2" Male Snap-Loc x 1/2" Female NPT Black (2)	L
8550-389	6J	1/2" Male Snap-Loc x 1/2" Male NPT Black (10)	L	8550-395	6J	1/2" Male Snap-Loc x 1/2" Female NPT Black (10)	L
8550-399	9.18	1/2" Male Snap-Loc x 1/2" Male BSPT Dk Gray (1)	L	8550-401	9.18	1/2" Male Snap-Loc x 1/2" Female BSPT Dk Gray (1)	L
8550-392	15.1H	1/2" Male Snap-Loc x 1/2" Male BSPT Dk Gray (2)	L	8550-390	15.1H	1/2" Male Snap-Loc x 1/2" Female BSPT Dk Gray (2)	L
8550-393	6J	1/2" Male Snap-Loc x 1/2" Male BSPT Dk Gray (10)	L	8550-391	6J	1/2" Male Snap-Loc x 1/2" Female BSPT Dk Gray (10)	L

Plastic Threaded Valves



CAT. NO.	PRICE	DESCRIPTION	CODE	CAT. NO.	PRICE	DESCRIPTION	CODE
8525-346	7.11	1/4" Male NPT x 1/4" Female NPT Black (1)	L	8525-352	7.11	1/4" Female NPT x 1/4" Female NPT Black (1)	L
8525-347	12.11	1/4" Male NPT x 1/4" Female NPT Black (2)	L	8525-353	12.11	1/4" Female NPT x 1/4" Female NPT Black (2)	L
8525-348	51	1/4" Male NPT x 1/4" Female NPT Black (10)	L	8525-354	51	1/4" Female NPT x 1/4" Female NPT Black (10)	L
8525-349	7.11	1/4" Male BSPT x 1/4" Female BSPT Dk Gray (1)	L	8525-355	7.11	1/4" Female BSPT x 1/4" Female BSPT Dk Gray (1)	L
8525-350	12.11	1/4" Male BSPT x 1/4" Female BSPT Dk Gray (2)	L	8525-356	12.15	1/4" Female BSPT x 1/4" Female BSPT Dk Gray (2)	L
8525-351	51	1/4" Male BSPT x 1/4" Female BSPT Dk Gray (10)	L	8525-357	51	1/4" Female BSPT x 1/4" Female BSPT Dk Gray (10)	L
8550-402	9.18	1/2" Male NPT x 1/2" Female NPT Black (1)	L	8550-408	9.18	1/2" Female NPT x 1/2" Female NPT Black (1)	L
8550-403	15.1H	1/2" Male NPT x 1/2" Female NPT Black (2)	L	8550-409	15.1H	1/2" Female NPT x 1/2" Female NPT Black (2)	L
8550-404	6J	1/2" Male NPT x 1/2" Female NPT Black (10)	L	8550-410	6J	1/2" Female NPT x 1/2" Female NPT Black (10)	L
8550-405	9.18	1/2" Male BSPT x 1/2" Female BSPT Dk Gray (1)	L	8550-411	9.18	1/2" Female BSPT x 1/2" Female BSPT Dk Gray (1)	L
8550-406	15.1H	1/2" Male BSPT x 1/2" Female BSPT Dk Gray (2)	L	8550-412	15.1H	1/2" Female BSPT x 1/2" Female BSPT Dk Gray (2)	L
8550-407	6J	1/2" Male BSPT x 1/2" Female BSPT Dk Gray (10)	L	8550-413	6J	1/2" Female BSPT x 1/2" Female BSPT Dk Gray (10)	L

Standard Material: Delrin 500.

Other Valves Available: Consult Factory.

Standard Colors: 1/4": NPT Black, BSPT Dk Gray
1/2": NPT Dk Gray, BSPT Dk Gray

Flood King/Manifold Kit/ Assembly & Separation Tools

Flood King

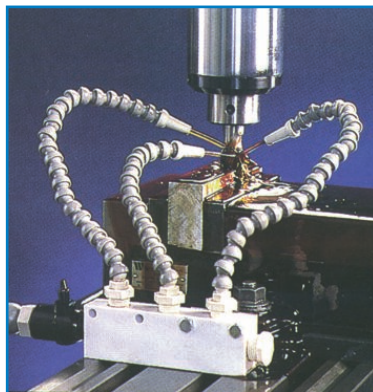


CAT. NO.	PRICE	QTY	DESCRIPTION	CODE
8550-249	66.11	1	Flood King Kit Includes: 1 1/2" Ball Valve 4 1/2" x 12" Hose Assembly 4 Male Hose x 3/8" NPT Connectors 4 1/2" Nozzles 1 Manifold Block with Mounting Bracket 2 NPT Plugs	C

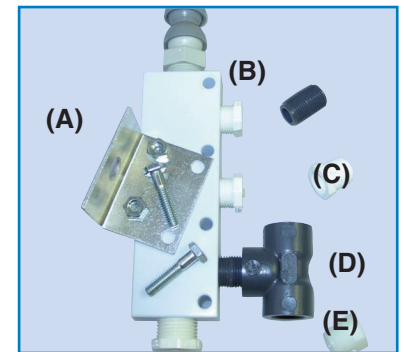
FEATURES:

- Valve Control
- Up to four hose lines
- Interchangeable nozzles with different diameters
- Flexible Snap-Loc for direct flow into flood area
- Vibration wandering eliminated
- Stays in place
- High chemical resistance
- Any length or shape instantly available
- Multiple uses

Universal Manifold Kit



CAT. NO.	PRICE	QTY	DESCRIPTION	CODE
8550-116	71.11	1	Universal Manifold Kit Kit Includes: 1 Manifold Block 1 Mounting Bracket 1 1/2" Female x 1/2" NPT Male Connector 1 1/2" NPT Ball Valve 2 1/2" NPT Close Nipple 3 3/8" NPT Close Nipple 6 3/8" NPT x 1/4" NPT Reducer Bushing 1 1/2" NPT Plug 1 3/8" NPT Plug 3 3/8" NPT Tee 2 1/4"-20 Hex Head Screw 2 1/4"-20 Hex Head Nut	C



Manifold Kit Accessories

CAT. NO.	PRICE	DESCRIPTION	Fig.	CODE
		Manifold Block & Mounting Bracket	(A)	
8550-121	24.11	Pac of 1 Set		C
8550-140	121.11	Bag of 6 Sets		O

Assembly & Separation Tools

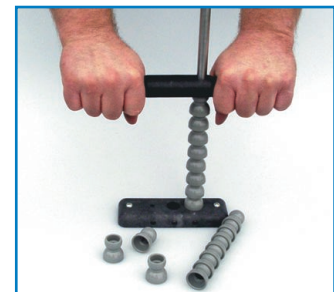


Separation Wedges

CAT. NO.	PRICE	DESCRIPTION	CODE
8701-030	7.11	1/4" Separation Wedge	O
8701-031	9.11	1/2" Separation Wedge	O
8701-032	11.11	3/4" Separation Wedge	O

BENEFITS:

- Simple tool slips easily over hose components for quick separation of parts
- Works well in awkward positions or on machines



Universal Assembly Tool

CAT. NO.	PRICE	DESCRIPTION	CODE
8701-024	65.00	1/4" Universal Assembly Kit	B
8701-025	75.00	1/2" Universal Assembly Kit	B
8701-026	90.00	3/4" Universal Assembly Kit	B
8701-019	12.35	1/4" Line-Up Rod	B
8701-020	15.10	1/2" Line-Up Rod	B
8701-021	18.10	3/4" Line-Up Rod	B
8701-022	23.81	Push Bar	B
8701-023	27.67	Base	B

FEATURES:

- Simple to install and easy to use
- Assembles up to 12" hose lengths
- Purchase additional rods to assemble all sizes
- Assembles hose segments, as well as round nozzles and connectors of same size



Assembly Pliers

CAT. NO.	PRICE	DESCRIPTION	CODE
8701-006	14.11	Assembly Pliers for 1/4" I. D. Systems	O
8701-007	14.11	Assembly Pliers for 1/2" I. D. Systems	O

BENEFITS:

- Get a tight grip on snap-fit
- Great for special assemblies
- Tool makes it easier to get leverage for assembly
- Eliminates frustration of assembly with oily hands or in awkward positions on machines
- Compatible with most "Brand X" hoses

Magna-Flow/E-Z Mist

Magna-Flow

Efficient Flow Control To Deliver Air / Liquid Coolant Where It Is Needed



FEATURES:

- Control valve allows convenient adjustment of air / coolant near work
- Barbed connection easily adapts to regulated shop air or machine coolant pump
- Magnetic Base (38 Lb. Pull) holds unit firmly in position
- Made of high quality non-corrosive materials
- Flexible hose can be easily directed and stays in position

BENEFITS:

- Extends tool life with precise coolant delivery
- Clears chips from work piece for easier visual inspection
- Great for EDM flushing
- Eliminates awkward support & adjustment
- Quickly transfers to other machines



Replacement Parts

CAT. NO.	PRICE	DESCRIPTION	CODE
8525-262	42.01	Magna-Flow Single Pac Single 9" Length of 1/4" I.D. Hose 1/8" I.D. Nozzle	I
8525-263	41.00	Magna-Flow Dual Pac Two 9" Lengths of 1/4" I.D. Hose 1/8" I.D. Nozzle	I

APPLICATION NOTE:

- It is easy to adapt units for more nozzle outlets. Extra hose, Y-fittings, and nozzles may be purchased separately.

CAT. NO.	PRICE	DESCRIPTION	CODE
8702-043	21.00	Mag Base Assembly	II
8525-342	7.11	1/4" SL x MPT Valve	L

E-Z Mist

Reliable Mist Flow With Precision Control



FEATURES:

- Get the right mist mixture with separate air and fluid controls
- Fully assembled, ready to use
- No special tank required
- Magnetic base can be easily repositioned
- Made of high quality non-corrosive materials

BENEFITS:

- Extend tool life with optimal heat dissipation
- Allows correct mist mixture for any job
- Chemical savings
- Flexible hose stays in position to direct mist flow with ease
- Maintenance minimized by in-line coolant filter

CAT. NO.	PRICE	DESCRIPTION	CODE
8703-002	18.69	E-Z Mist Precision Control Kit Kit Includes: 1/4" NPT Ball Valve 1/4" NPT Quick Disconnect 12" Hose Assembly with 1/8" Nozzle Pressure Gauge 1/4" Regulator Aspirator Foot Strainer 3/8" O.D. Tubing Magnetic Base	I

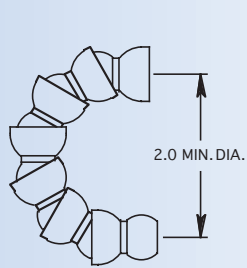
CAT. NO.	PRICE	DESCRIPTION	CODE
6460-001	76.85	Aspirator Assembly With Strainer	II
8702-043	21.00	Mag Base Assembly	II
8525-346	7.11	1/4" MPT x FPT Valve	L
6420-001	26.08	Regulator	II
6480-001	17.85	1" Diameter Pressure Gauge	II
6530-001	10.51	Strainer Assembly	II
6501-002	1.11	3/8" O.D. Plastic Tubing (1 Ft)	II
8703-004	43.92	Precision Regulator Gauge Kit	II
8703-006	18.69	E-Z Mist 12" Hose Assembly with 1/8" Nozzle	II

APPLICATION NOTES:

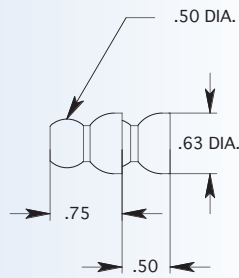
- E-Z Mist Precision Control Kit utilizes a built in regulator so shop air can be directly applied. Maintain close pressure tolerances for maximum misting efficiency and maximum cost savings

Technical & Dimensional Data

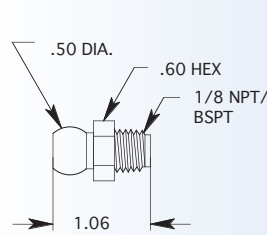
1/4" Snap-Loc Dimensions (Inches)



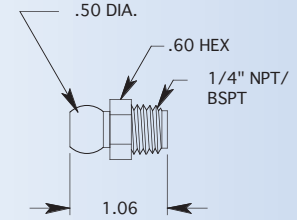
1/4" HOSE



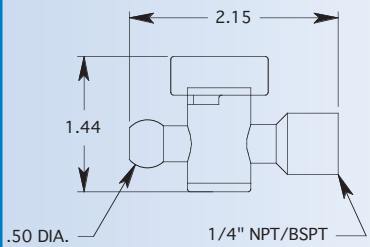
1/4" BODY SEGMENTS



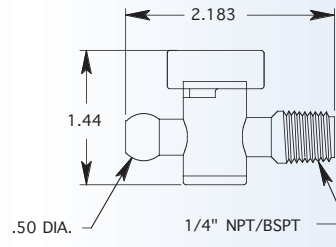
1/8" MALE CONNECTOR



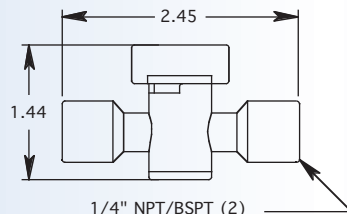
1/4" MALE CONNECTOR



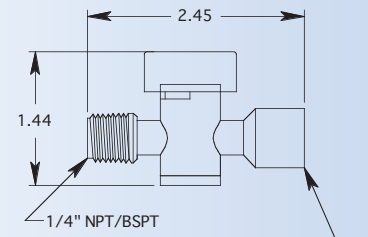
1/4" HOSE X 1/4" NPT/F BSPT VALVE



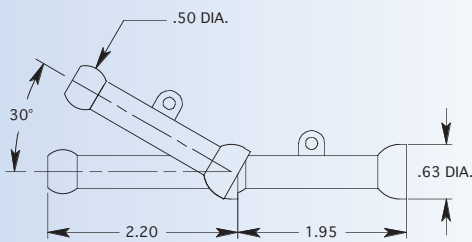
1/4" HOSE X 1/4" NPT/BSPT VALVE



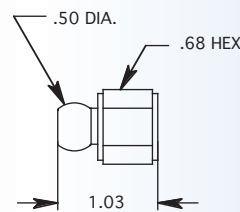
1/4" NPT/BSPT (2)
1/4" F NPT/BSPT X 1/4" F NPT/BSPT VALVE



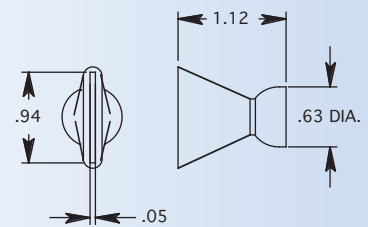
1/4" NPT/BSPT X 1/4" F NPT/F BSPT VALVE



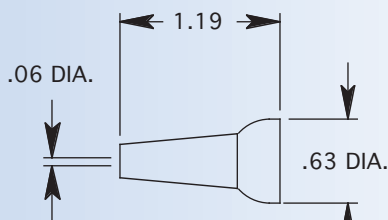
1/4" EXTENSION SEGMENTS



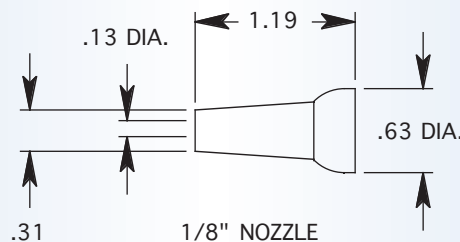
1/8" FPT FEMALE CONNECTOR
1/4" FPT FEMALE CONNECTOR



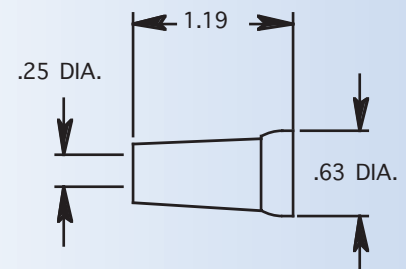
1" FLARE NOZZLE



1/16" NOZZLE



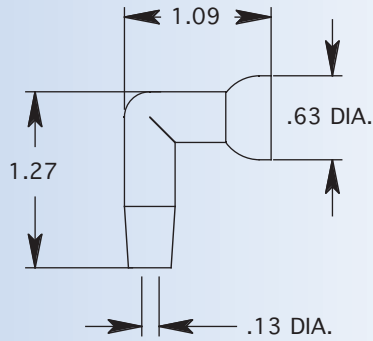
1/8" NOZZLE



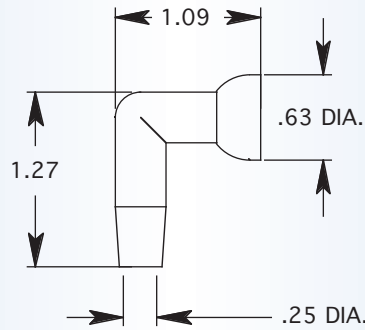
1/4" NOZZLE

Technical & Dimensional Data

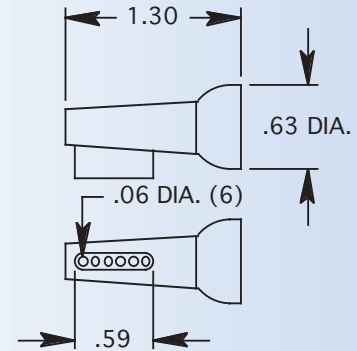
1/4" Snap-Loc Dimensions (Inches)



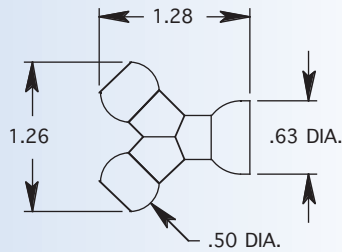
1/8" 90 DEGREE NOZZLE



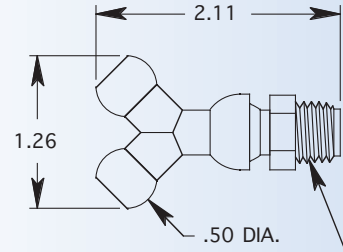
1/4" 90 DEGREE NOZZLE



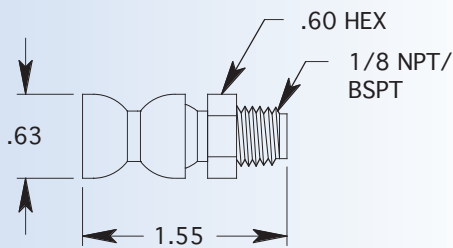
1/4" SIDE-SPRAY NOZZLE



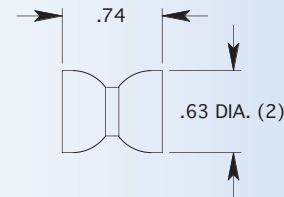
1/4" Y



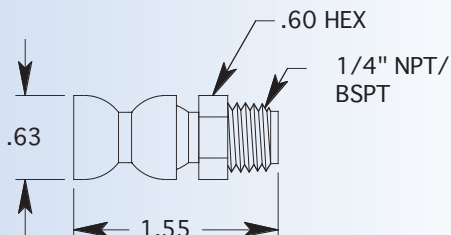
1/4" Y X 1/8" & 1/4" CONNECTOR MOLDED



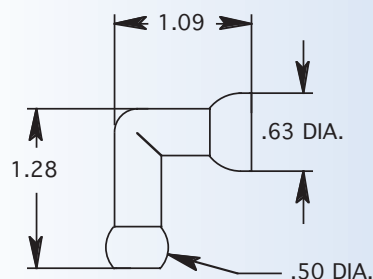
1/4" F HOSE X 1/8" CONNECTOR



1/4" DOUBLE SOCKET ADAPTER



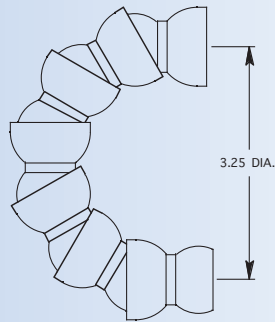
1/4" F HOSE X 1/4" CONNECTOR



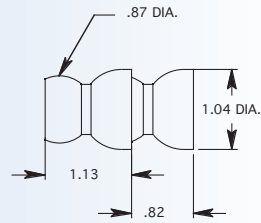
1/4" 90 DEGREE ELBOW

Technical & Dimensional Data

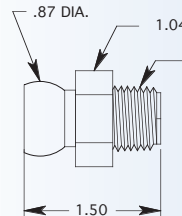
1/2" Snap-Loc Dimensions (Inches)



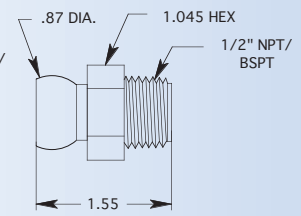
1/2" HOSE



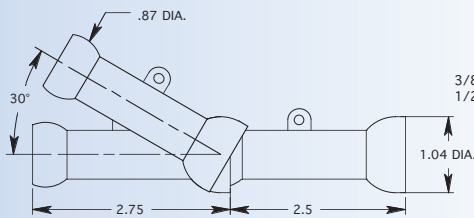
1/2" BODY SEGMENTS



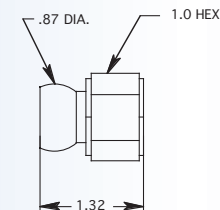
3/8" MALE CONNECTOR



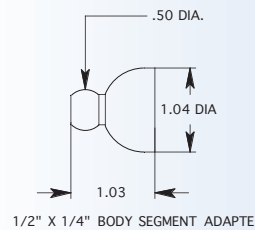
1/2" MALE CONNECTOR



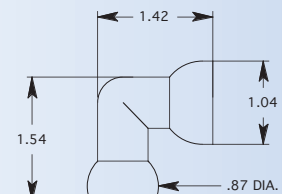
1/2" EXTENSION SEGMENTS



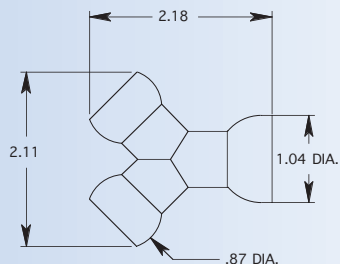
3/8" FPT FEMALE CONNECTOR
1/2" FPT FEMALE CONNECTOR



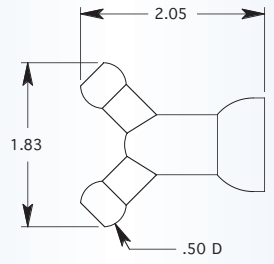
1/2" X 1/4" BODY SEGMENT ADAPTER



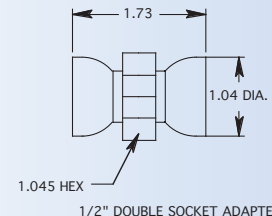
1/2" 90 DEGREE ELBOW



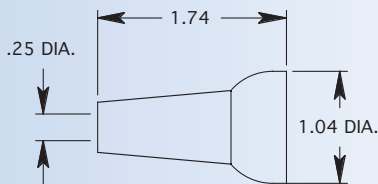
1/2" Y MOLDED



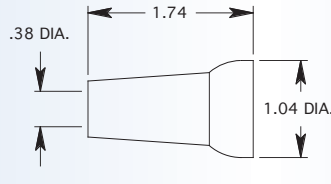
1/2" X 1/4" REDUCER Y - MOLDED STYLE



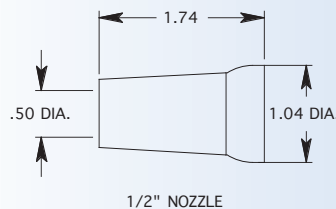
1/2" DOUBLE SOCKET ADAPTER



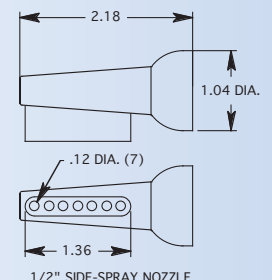
1/4" NOZZLE
1/4" NOZZLE



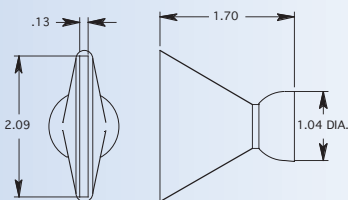
3/8" NOZZLE



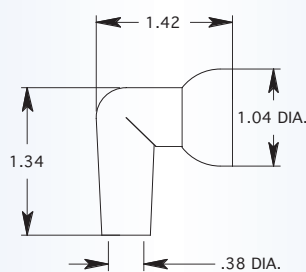
1/2" NOZZLE



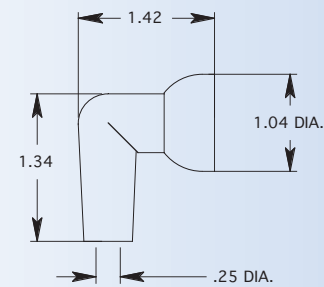
1/2" SIDE-SPRAY NOZZLE



2" FLARE NOZZLE



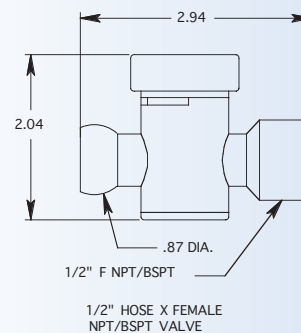
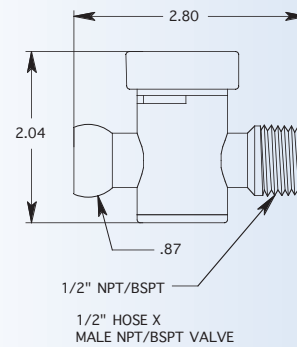
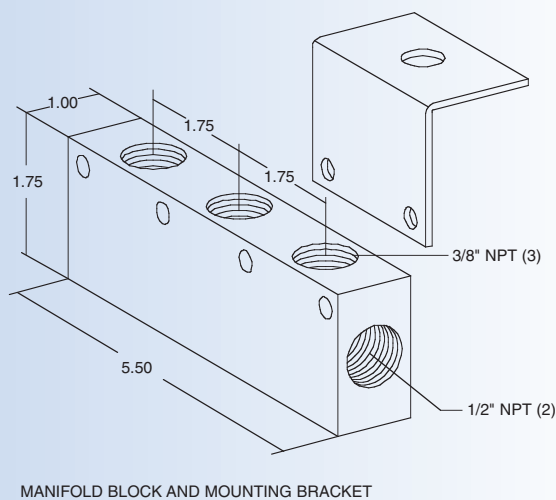
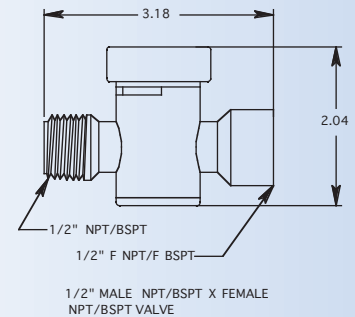
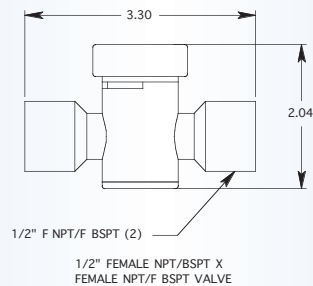
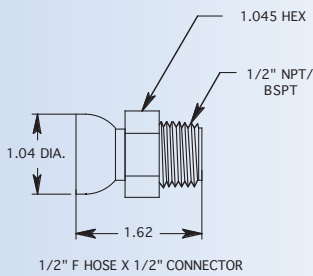
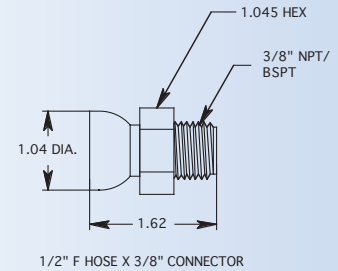
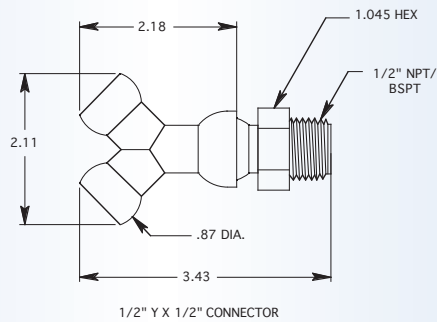
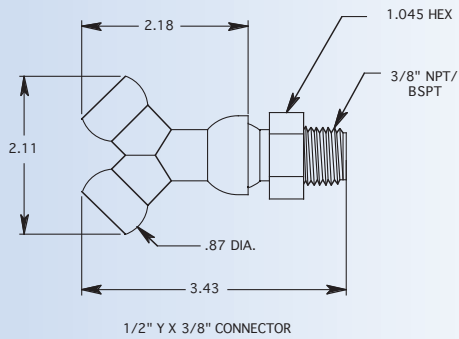
3/8" 90 DEGREE NOZZLE



1/4" 90 DEGREE NOZZLE

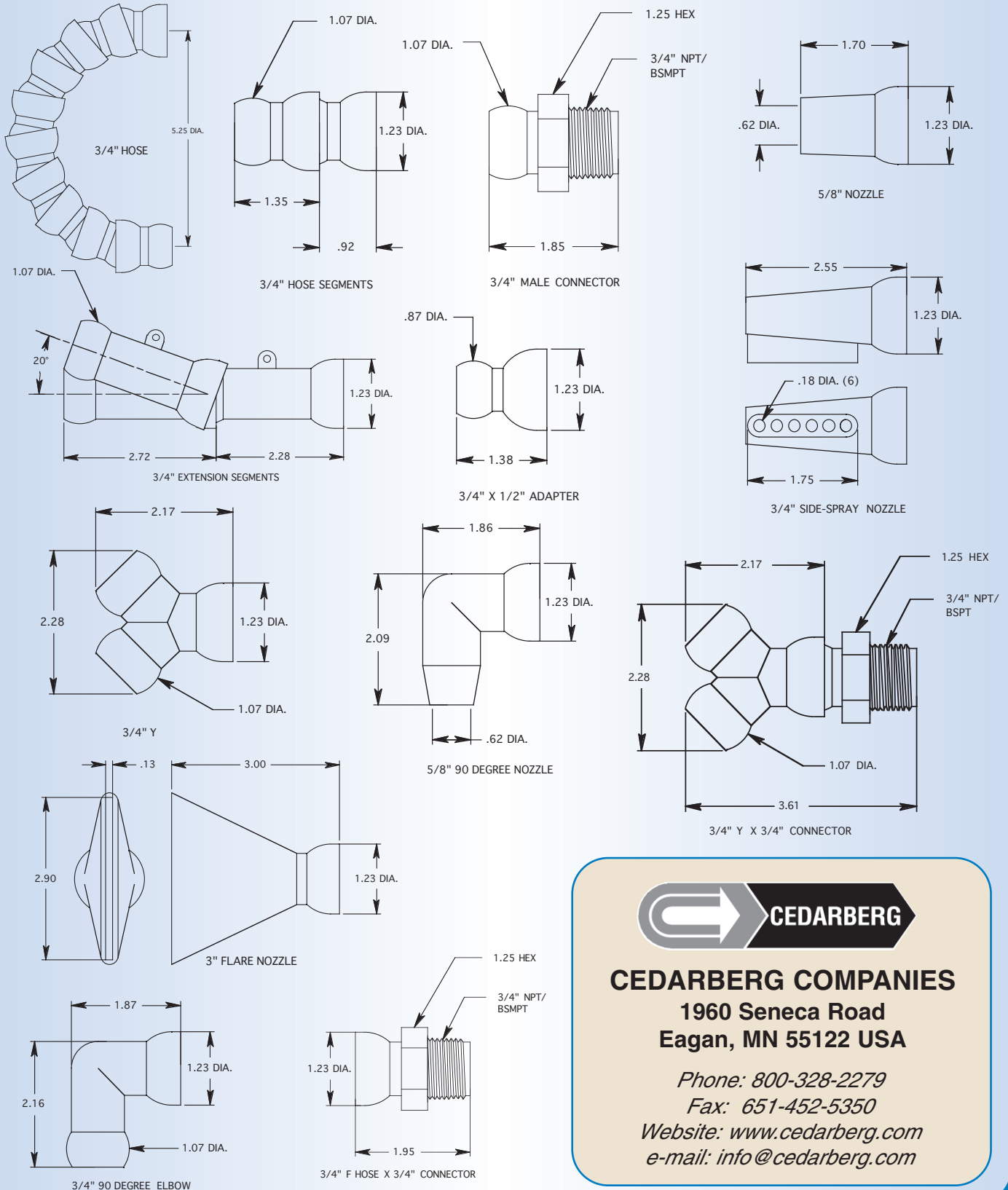
Technical & Dimensional Data

1/2" Snap-Loc Dimensions (Inches)



Technical & Dimensional Data

3/4" Snap-Loc Dimensions (Inches)



CEDARBERG COMPANIES

**1960 Seneca Road
Eagan, MN 55122 USA**

Phone: 800-328-2279

Fax: 651-452-5350

Website: www.cedarberg.com

e-mail: info@cedarberg.com