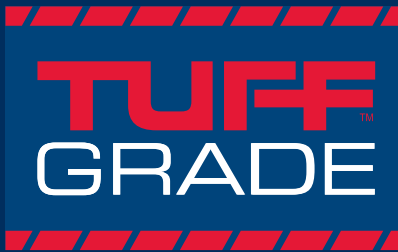


# TUFF GRADE™





**Hand, Precision & Power Tools**



**1 - 12**

**Hose, Rubber & Fittings**



**13 - 14**

**Shop Supplies**



**15 - 22**

**Abrasives**



**22 - 24**

**Safety Supplies**



**25 - 32**

**Material Handling**



**33 - 35**

**Adhesives, Tape & Chemicals**



**36 - 37**

**Cutting Tools**



**38 - 43**

**WARRANTY** - All Tuff Grade branded products are guaranteed against defects in workmanship and materials. All hand tools and air tools have a life time replacement warranty on defective products when the tool is used for the purpose for which it was designed. Any Tuff Grade product that fails within the specified warranty period will be repaired or replaced, at the distributors discretion, at no charge to the end-user. All warranties are void if there is evidence of misuse, abuse or alteration of the product in any way. Incidental or consequential damages are excluded from this warranty.

**WARRANTY PROCEDURE** - Tuff Grade products being submitted for a warranty claim should be returned to place of purchase with proof of purchase and an explanation of the defect.



## SAE COMBINATION WRENCH SETS



Chrome Vanadium Steel with Polished Mirror Finish  
 Premium Canvas Pouch  
 Contains: 1/4", 5/16", 3/8", 7/16", 1/2", 9/16", 5/8", 11/16", 3/4", 13/16", 7/8", 15/16", 1-1/16", 1-1/8", 1-1/4"

Item Number	Description
TGCW-SET-16PC	16 Piece SAE Combination Wrench Set



Chrome Vanadium Steel with Polished Mirror Finish  
 Premium Canvas Pouch  
 Contains: 1-5/16", 1-3/8", 1-7/16", 1-1/2", 1-5/8", 1-11/16", 1-7/8", 2"

Item Number	Description
TGCW-SET-10PC	10 Piece SAE Combination Wrench Set

## SAE COMBINATION WRENCHES



Item Number	Size	Length
TGCW-025	1/4"	5.08"
TGCW-031	5/16"	5.55"
TGCW-037	3/8"	6.30"
TGCW-044	7/16"	6.57"
TGCW-050	1/2"	7.20"
TGCW-056	9/16"	7.51"
TGCW-063	5/8"	8.39"
TGCW-069	11/16"	8.90"
TGCW-075	3/4"	9.84"
TGCW-081	13/16"	10.47"
TGCW-088	7/8"	11.57"
TGCW-094	15/16"	12.08"

Item Number	Size	Length
TGCW-100	1"	13.38"
TGCW-106	1-1/16"	14.21"
TGCW-113	1-1/8"	16.37"
TGCW-125	1-1/4"	16.77"
TGCW-131	1-5/16"	17.71"
TGCW-137	1-3/8"	17.51"
TGCW-144	1-7/16"	18.70"
TGCW-150	1-1/2"	18.50"
TGCW-162	1-5/8"	19.68"
TGCW-168	1-11/16"	21.06"
TGCW-175	1-3/4"	21.06"
TGCW-181	1-13/16"	21.06"
TGCW-187	1-7/8"	22.55"
TGCW-200	2"	23.74"
TGCW-213	2-1/8"	26.57"
TGCW-225	2-1/4"	26.57"
TGCW-237	2-3/8"	27.55"
TGCW-250	2-1/2"	27.55"



## METRIC COMBINATION WRENCH SETS



Chrome Vanadium Steel with Polished Mirror Finish  
 Premium Canvas Pouch  
 Contains: 7mm, 8mm, 9mm, 10mm, 11mm, 12mm, 13mm, 14mm, 15mm, 16mm, 17mm, 18mm, 19mm, 21mm, 22mm, 24mm

Item Number	Description
TGCW-SET-16PC-MET	16 Piece Metric Combination Wrench Set

Chrome Vanadium Steel with Polished Mirror Finish  
 Premium Canvas Pouch  
 Contains: 7mm, 8mm, 9mm, 10mm, 11mm, 12mm, 13mm, 14mm, 15mm, 16mm, 17mm, 18mm, 19mm, 20mm, 21mm, 22mm, 23mm, 24mm, 26mm, 27mm, 30mm, 32mm

Chrome Vanadium Steel with Polished Mirror Finish  
 Premium Canvas Pouch  
 Contains: 7mm, 8mm, 10mm, 12mm, 14mm, 16mm, 17mm, 20mm, 22mm, 24mm, 26mm, 28mm, 30mm, 32mm

Item Number	Description
TGCW-SET-22PC-MET	22 Piece Metric Combination Wrench Set

Item Number	Description
TGCW-SET-14PC-MET	14 Piece Metric Combination Wrench Set

## METRIC COMBINATION WRENCHES



Item Number	Size	Length
TGCW-M007	7	5.28"
TGCW-M008	8	5.55"
TGCW-M009	9	5.91"
TGCW-M010	10	6.30"
TGCW-M012	12	6.85"
TGCW-M013	13	7.20"
TGCW-M014	14	7.52"

Item Number	Size	Length
TGCW-M015	15	7.95"
TGCW-M016	16	8.39"
TGCW-M017	17	8.90"
TGCW-M018	18	9.41"
TGCW-M019	19	9.84"
TGCW-M020	20	10.47"
TGCW-M022	22	11.57"
TGCW-M024	24	12.55"
TGCW-M026	26	13.38"
TGCW-M028	28	14.21"
TGCW-M030	30	16.37"
TGCW-M032	32	16.77"



## 3/8" DRIVE SAE & METRIC SOCKET SET

- 6 point Sockets 3/8" - 3/4" and 8mm - 19mm
- 6 point Deep Sockets 3/8" - 13/16" and 8mm - 19mm
- 3/8" Drive Ratchet, 72 Tooth
- 2 Extension Bars, 1 Universal Joint and 1 Sliding T-Bar

Item Number	Description
TGSS-SET01	44 Piece Socket Set



## 1/2" DRIVE SAE & METRIC SOCKET SET

- 6 point Sockets 3/8" - 1-1/4" and 10mm - 32mm
- 6 point Deep Sockets 7/16" - 7/8" and 10mm - 21mm
- 1/2" Drive Ratchet, 72 Tooth
- 3 Extension Bars, 1 Universal Joint and 1 Sliding T-Bar

Item Number	Description
TGSS-SET02	55 Piece Socket Set



## 3/4" DRIVE SAE SOCKET SET

- 6 point Sockets 1-1/16" - 2"
- 3/4" Drive Ratchet, 24 Tooth, Reversible
- 2 Extension Bars and 1 Universal Joint

Item Number	Description
TGSS-SET03	21 Piece Socket Set





## 1/2" DRIVE DEEP IMPACT SOCKET SETS

- 12 Piece Deep Impact Socket Sets
- Includes Blow Molded Case



Item Number	Description
TGSS-001	6 point Sockets 3/8" - 15/16"
TGSS-002	6 point Sockets 10mm - 24mm

## 3/4" DRIVE DEEP IMPACT SOCKET SETS

- 9 Piece Deep Impact Socket Sets
- Includes Blow Molded Case



Item Number	Description
TGSS-007	6 point sockets 1" - 1-1/2"
TGSS-008	6 point sockets 24mm - 38mm

## SLIP JOINT PLIERS

- Chrome Vanadium Steel
- Meets ANSI Standards
- Double Dipped Handle



Item Number	Length	Shipping. Wt.
TGHT-014-006	6"	.41 lbs
TGHT-014-008	8"	.64 lbs
TGHT-014-010	10"	.91 lbs

## TONGUE & GROOVE PLIERS

- Chrome Vanadium Steel
- Meets ANSI Standards
- Double Dipped Handle



Item Number	Length	Max Opening	No. Grooves
TGHT-016-008	8"	4.09"	6
TGHT-016-010	10"	4.09"	6
TGHT-016-012	12"	5.08"	6



## LONG NOSE PLIERS

- Chrome Vanadium Steel
- Meets ANSI Standards
- Double Dipped Handle



Item Number	Length	Shipping Weight
TGHT-020-007	7"	.42 lbs
TGHT-020-008	8"	.50 lbs

## BENT NOSE PLIERS

- Chrome Vanadium Steel
- Meets ANSI Standards
- Double Dipped Handle



Item Number	Length	Shipping Weight
TGHT-021-006	6"	.29 lbs
TGHT-021-008	8"	.50 lbs

## CURVED JAW LOCKING PLIERS

- Chrome Vanadium Steel
- Meets ANSI Standards
- Built in Wire Cutters



Item Number	Length	Min Open	Max Open
TGHT-030-007	7"	.67"	1.14"
TGHT-030-010	8"	.79"	1.46"

## DIAGONAL CUTTERS / PLIERS

- Chrome Vanadium Steel
- Meets ANSI Standards
- Double Dipped Handle



Item Number	Length	Shipping Weight
TGHT-031-006	6"	.31 lbs
TGHT-031-007	7"	.42 lbs
TGHT-031-088	8"	.51 lbs

## LINESMAN'S PLIERS

- Chrome Vanadium Steel
- Meets ANSI Standards
- Double Dipped Handle



Item Number	Length	Shipping. Wt.
TGHT-018-006	6"	.44 lbs
TGHT-018-008	8"	.77 lbs

## MAGNETIC PICKUP

- 5 lbs. Lift (lbs.)
- Telescopic Handle
- Minimum Length: 5-1/4"
- Maximum Length: 25-1/2"



Item Number	Length	Lift
TGHT-031-006	5-1/5" - 25-1/2"	5 lbs



## HEX KEY SETS

- Chrome Vanadium Steel
- Finish: Black Oxide
- Rubber Handle / Holder



Item Number	Description
TGHT3321	8 Piece MET Folding Hex Key Set Contains: 1.5mm - 8mm
TGHT3331	9 Piece SAE Folding Hex Key Set Contains: 5/64" - 1/4"
TGHT3301	9 Piece MET Ball End Carded Hex Key Set Contains: 1.5mm - 10mm
TGHT3311	9 Piece SAE Ball End Carded Hex Key Set Contains: 1/16" - 3/8"

## SCREWDRIVERS, PHILLIPS

- Chrome Vanadium Steel Blades
- Black Magnetic Tip
- Quick Reference Handle Imprint



Item Number	Tip Size	Blade Length
TGSD1101	#1	4"
TGSD1201	#2	4"
TGSD1301	#3	6"
TGSD1204	#2	1.5"

## SCREWDRIVERS, ROBERTSON

- Chrome Vanadium Steel Blades
- Black Magnetic Tip
- Quick Reference Handle Imprint
- Colour Coded Handle



Item Number	Tip Size	Blade Length
TGSD3101	#1	4"
TGSD3201	#2	6"
TGSD3301	#3	6"
TGSD3204	#2	1.5"

## SCREWDRIVERS, SLOT

- Chrome Vanadium Steel Blades
- Black Magnetic Tip
- Quick Reference Handle Imprint



Item Number	Tip Size	Blade Length
TGSD5101	3/16"	4"
TGSD5201	1/4"	4"
TGSD5301	5/16"	6"
TGSD5401	3/8"	6"
TGSD5204	1/4"	1.5"





## ADJUSTABLE WRENCH, CHROME

- Chrome Vanadium Steel
- Chrome Finish
- Plain Grip Handle



Item Number	Length	Max Jaw Width
IDI-AW6	6"	15/16"
IDI-AW8	8"	1-1/8"
IDI-AW10	10"	1-5/16"
IDI-AW12	12"	1-1/2"
IDI-AW15	15"	1-11/16"
IDI-AW18	18"	2-1/16"

## ADJUSTABLE WRENCH, CUSHION GRIP

- Chrome Vanadium Steel
- Chrome Finish
- Cushion Grip Handle



Item Number	Length	Max Jaw Width
IDI-AWC06	6"	15/16"
IDI-AWC08	8"	1-1/8"
IDI-AWC10	10"	1-5/16"
IDI-AWC12	12"	1-1/2"

## PIPE WRENCHES, ALUMINUM

- 40% Lighter than Cast Iron Wrenches
- Replaceable Jaws
- Ideal for Overhead Work



Item Number	Length	Pipe Capacity
TGPW-10-01	10"	1"
TGPW-12-01	12"	1-1/2"
TGPW-14-01	14"	2"
TGPW-18-01	18"	2-1/2"
TGPW-24-01	24"	3"
TGPW-36-01	36"	5"
TGPW-48-01	48"	6"

## PIPE WRENCHES, CAST IRON

- Drop Forged Steel
- Replaceable Jaws
- Ideal for Heavy-Duty Applications



Item Number	Length	Pipe Capacity
TGPW-08	8"	1"
TGPW-10	10"	1.5"
TGPW-12	12"	2"
TGPW-14	14"	2"
TGPW-18	18"	2.5"
TGPW-24	24"	3"



## LEVEL, STANDARD DUTY

- Body Construction: Aluminum
- Accuracy: 0.001 / inch
- Standard Duty



Item Number	Length	Level Vials	Plumb Vials
TGL-024-01	24"	1	2
TGL-048-01	48"	1	2
TGL-072-01	72"	1	2

## LEVEL, HEAVY DUTY

- Body Construction: Aluminum
- Accuracy: 0.0005 / inch
- Heavy Duty



Item Number	Length	Level Vials	Plumb Vials
TGL-024-03	24"	1	2
TGL-048-03	48"	1	2
TGL-072-03	72"	1	2

## LEVEL, TORPEDO

- Magnetic Edge
- Accuracy: 0.001 / inch



Item Number	Length	45 Vial	Level Vials	Plumb Vials
TGL-009-20	9"	1	1	1
TGL-009-22	9"	1	1	1

## LEVEL, HEAVY DUTY

- Body Construction: Aluminum
- Magnetic Edge
- Accuracy: 0.0005 / inch
- Heavy Duty



Item Number	Length	Level Vials	Plumb Vials
TGL-024-05	24"	1	2
TGL-048-05	48"	1	2

## LEVEL, LASER

- Body Construction: Aluminum
- Laser Functions: Horizontal Line, Cross-Line Pattern



Item Number	Length	45 Vial	Level Vials	Plumb Vials
TGL-024-09	24"	-	1	1

## UTILITY KNIFE

- Standard Duty Cutter
- Stainless Steel Blade Channel
- Replacement Blades: TGUK-018-10



Item Number	Description
TGUK-018-00	Slide Lock Blade, Utility Knife



## UTILITY KNIFE

- Heavy- Duty Cutter
- Contoured Handle
- Stainless Steel Blade Channel
- Replacement Blades: TGUK-001-10



Item Number	Description
TGUK-001-00	Ratchet Lock Blade, Utility Knife

## REPLACEMENT BLADES

- 10 Blades Per Pack, • 8 Segments Per Blade
- For Use With TGUK-001-00

Item Number	Description
TGUK-001-10	Replacement Blades, 8 Segments Per Blade

- 10 Blades Per Pack, 8 Segments Per Blade
- For Use With TGUK-001-00

Item Number	Description
TGUK-018-10	Replacement Blades, 12 Segments Per Blade

## TAPE MEASURES

- Magnetic Tip: NO
- High Impact ABS Case



Item Number	Length	Width	Graduation
TGTM-001	16' (5m)	3/4" (19mm)	Imperial Only
TGTM-002	16' (5m)	3/4" (19mm)	Imperial & Metric

- Magnetic Tip: NO
- High Impact ABS Case



Item Number	Length	Width	Graduation
TGTM-003	25' (7.5m)	1" (25mm)	Imperial Only
TGTM-004	25' (7.5m)	1" (25mm)	Imperial & Metric

- Magnetic Tip: YES
- High Impact ABS Case



Item Number	Length	Width	Graduation
TGTM-005	16' (5m)	3/4" (19mm)	Imperial Only
TGTM-006	16' (5m)	3/4" (19mm)	Imperial & Metric

- Magnetic Tip: YES
- High Impact ABS Case



Item Number	Length	Width	Graduation
TGTM-007	25' (7.5m)	1" (25mm)	Imperial Only
TGTM-008	25' (7.5m)	1" (25mm)	Imperial & Metric



## AVIATION SNIPS



Item Number	Length	Cut	Colour
TGHT-036-001	10"	Straight	Yellow
TGHT-036-002	10"	Left	Red
TGHT-036-003	10"	Right	Green

## BOLT CUTTERS, ECLIPSE

- Drop Forged
- Machined to Precise Specifications
- Rubber Grips



Item Number	Length	Cutting Capacity
ETBC-14	14"	3/16"
ETBC-18	18"	1/4"
ETBC-24	24"	5/16"
ETBC-30	30"	3/8"
ETBC-36	36"	7/16"

## HACKSAW BLADES

- Shatterproof Bi-Metal Blade
- Pack Quantity: 100 Blade



Item Number	Length	TPI - Teeth Per Inch
TGHSB1218	12"	18 TPI
TGHSB1224	12"	24 TPI
TGHSB1232	12"	32 TPI

## C-CLAMPS, ECLIPSE

- Malleable Iron Frame
- Powder Coat Finish



Item Number	Capacity	Frame Proof Load
E20-03	3"	1,000 lbs (455 kg)
E20-04	4"	1,200 lbs (545 kg)
E20-06	6"	1,400 lbs (636 kg)
E20-08	8"	1,700 lbs (773 kg)
E20-10	10"	2,000 lbs (909 kg)
E20-12	12"	2,500 lbs (1,136 kg)



## HOLE SAW KIT

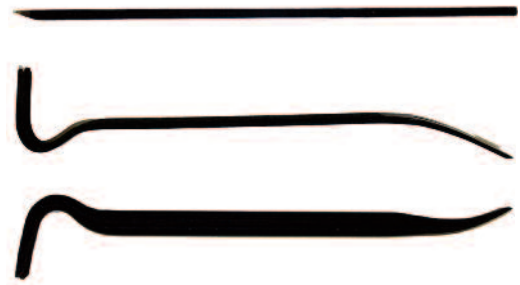
- Material: M42 Steel
- 8% Cobalt for Longer Life and Cutting
- Variable Pitch
- Colour: White
- Kit Includes:
  - 17 Hole Saws:
    - 3/4, 7/8, 1-1/8, 1-3/8, 1-1/2, 1-3/4, 2, 2-1/4, 2-1/2, 2-5/8, 3, 3-1/2, 3-5/8, 4-1/8, 4-1/4, 4-1/2, 4-3/4
  - 1 Arbor, 3/8 Hex  
For Sizes: 9/16 - 1-3/16
  - 1 Arbor, 1/2 Hex  
For Sizes: 1-1/4 - 4-3/4



Item Number	Description
TGHS-K019	19 Piece Bi-Metal Hole Saw Kit

## WRECKING & UTILITY BARS

- Tempered Alloy Steel
- Electrostatic Powder Coated Finish



Item Number	Description	Length	Weight
TGHT-040-024	Wrecking Bar	24"	4.25 lbs.
TGHT-040-036	Wrecking Bar	36"	6.25 lbs.
TGHT-048-060	Pry Bar	60"	18 lbs.
TGHT-044-015	Utility Bar	15"	1.5 lbs.

## PUNCH & CHISEL SETS

- Chrome Vanadium Steel
- Double Sand Blasted Finish



Item Number	Description
TG-GP006B2	6 pc. Pin & Center Punch Set
TG-GP005A2	5 pc. Taper Punch Set
TG-GP003A2	3 pc. Cold Chisel Set
TG-GP007G	7 pc. Punch & Chisel Set
TG-GP026	26 pc. Punch & Chisel Set

## CHISELS

- Chrome Vanadium Steel
- Double Sand Blasted Finish



Item Number	Description
TG-GPCD2201	12" Cold Chisel with Striking Head
TG-GPCV2202	12" Cold Chisel



## PNEUMATIC DIE GRINDERS

- Body Construction: Aluminum
- Air Inlet: 1/4" NPT.
- Free Speed RPM: 25,000
- CFM: 2.8
- Collet Size: 1/4"



Item Number	Description
XQ811A	Mini Pneumatic Die Grinder

- Body Construction: Aluminum
- Air Inlet: 1/4" NPT.
- Free Speed RPM: 22,000
- CFM: 4.0
- Collet Size: 1/4"



Item Number	Description
XQ812A	Pneumatic Die Grinder

## MAGNETIC STAND, UNIVERSAL

- Body Construction: Aluminum
- Accuracy: 0.001 / inch
- Standard Duty



Item Number	Description
TG-MAGSTAND-80	Universal Magnetic Stand 80kg

## OUTSIDE MICROMETERS

- Digital Display 0 - 1"
- IP54 Moisture Resistant Construction
- Resolution: .00005"



Item Number	Diameter	Range	Resolution
IDI-208C-535	Outside Micrometer	0 - 1"	.00005"

## PNEUMATIC DIE GRINDERS

- Body Construction: Aluminum
- Air Inlet: 1/4" NPT.
- Free Speed RPM: 20,000
- CFM: 2.8
- Collet Size: 1/4"



Item Number	Description
XQ816	45 Angle Pneumatic Die Grinder

## DIGITAL CALIPERS

- Display: SAE & Metric
- Resolution: 0.0005"
- Battery & Case Included
- Fine Adjustment Thumb Wheel
- Function Buttons:
  - SAE/Metric Conversion
  - Zero at Any Position



Item Number	Range	Housing
IDI-21150S	0-6" / 150mm	Plastic
IDI-21151S	0-6" / 150mm	Stainless Steel
IDI-21200S	0-8" / 200mm	Plastic

## DIAL INDICATORS



Item Number	Diameter	Range	Graduation
IDI-203-101	1.50"	0 - 0.25"	.001"
IDI-203-102	2.25"	0 - 0.50"	.0005"
IDI-203-103	2.25"	0 - 1.0"	.001"



## AIR HOSE, SELF-STORING

- Material: Polyurethane
- Colour: Blue
- 125 PSI



Item Number	Hose I.D.	Fitting	Length
TGAH-152525	1/4"	1/4"	15'
TGAH-252525	1/4"	1/4"	25'
TGAH-502525	1/4"	1/4"	50'
TGAH-153737	3/8"	3/8"	15'
TGAH-253737	3/8"	3/8"	25'
TGAH-503737	3/8"	3/8"	50'
TGAH-153725	3/8"	1/4"	15'
TGAH-253725	3/8"	1/4"	25'
TGAH-503725	3/8"	1/4"	50'

## BRASS BALL VALVES

- Full Port Threaded
- 600 WOG
- CSA, UL, FM Certified
- Locking Handle



Item Number	Size (inch)	Handle
TG-BBVT-1/4-L/O	1/4"	Locking
TG-BBVT-3/8-L/O	3/8"	Locking
TG-BBVT-1/2-L/O	1/2"	Locking
TG-BBVT-3/4-L/O	3/4"	Locking
TG-BBVT-1-L/O	1"	Locking
TG-BBVT-1-1/4-L/O	1-1/4"	Locking
TG-BBVT-1-1/2-L/O	1-1/2"	Locking

## BRASS BALL VALVES

- Full Port Threaded
- 600 WOG
- CSA, UL, FM Certified
- Standard Handle



Item Number	Size (inch)	Handle
TG-BBVT-1/4	1/4"	Standard
TG-BBVT-3/8	3/8"	Standard
TG-BBVT-1/2	1/2"	Standard
TG-BBVT-3/4	3/4"	Standard
TG-BBVT-1	1"	Standard
TG-BBVT-1-1/4	1-1/4"	Standard
TG-BBVT-1-1/2	1-1/2"	Standard
TG-BBVT-2	2"	Standard
TG-BBVT-3	3"	Standard
TG-BBVT-4	4"	Standard

- Full Port Threaded
- 600 WOG
- CSA, UL, FM Certified
- Standard Handle
- Lead-Free Body

Item Number	Size (inch)	Handle
TG-BBVT-1/4-L/F	1/4"	Standard
TG-BBVT-3/8-L/F	3/8"	Standard
TG-BBVT-1/2-L/F	1/2"	Standard
TG-BBVT-3/4-L/F	3/4"	Standard
TG-BBVT-1-L/F	1"	Standard
TG-BBVT-1-1/4-L/F	1-1/4"	Standard
TG-BBVT-1-1/2-L/F	1-1/2"	Standard
TG-BBVT-2-L/F	2"	Standard
TG-BBVT-3-L/F	3"	Standard
TG-BBVT-4-L/F	4"	Standard



## EPDM GENERAL SERVICE HOSE

- Tube-Black EPDM Blended Rubber
- Reinforcement - Polyester Yarn
- Cover - Smooth Red Abrasion Resistant EPDM Blend
- Temperature Range: -20 to +93
- Standard Lengths:
- 1/4" to 1/2" - 600' (2-300' pieces)
- 3/4" to 1" - 400' (2-200' pieces)



Item Number	I.D.	O.D.	Max W.P. (PSI)
CHAL-.25-250	1/4"	0.51"	250
CHAL-.375-250	3/8"	0.67"	250
CHAL-.5-250	1/2"	0.83"	250
CHAL-.75-250	3/4"	1.14"	250
CHAL-1-200	1"	1.40"	200

## HOSE CLAMPS

- Band: 1/2" 301 Stainless Steel
- Screw: 15/16 Slotted, 301 Stainless Steel
- Housing: 301 Stainless Steel



Item Number	Min. Diameter	Max. Diameter
TGHC-01-006	3/8"	7/8"
TGHC-01-008	7/16"	1"
TGHC-01-010	9/16"	1-1/16"
TGHC-01-012	9/16"	1-1/4"
TGHC-01-016	11/16"	1-1/2"
TGHC-01-020	3/4"	1-3/4"
TGHC-01-024	1-1/16"	2"
TGHC-01-028	1-5/16"	2-1/4"
TGHC-01-032	1-9/16"	2-1/2"
TGHC-01-036	1-13/16"	2-3/4"
TGHC-01-040	2-1/16"	3"

- Band: 1/2" 301 Stainless Steel
- Screw: 15/16 Slotted, 301 Stainless Steel
- Housing: 301 Stainless Steel

Item Number	Min. Diameter	Max. Diameter
TGHC-01-044	2-5/16"	3-1/4"
TGHC-01-048	2-9/16"	3-1/2"
TGHC-01-052	2-13/16"	3-3/4"
TGHC-01-056	3-1/16"	4"
TGHC-01-060	3-5/16"	4-1/4"
TGHC-01-064	2-1/2"	4-1/2"
TGHC-01-072	3"	5"
TGHC-01-080	3-1/2"	5-1/2"
TGHC-01-084	3-3/4"	5-3/4"
TGHC-01-088	4"	6"
TGHC-01-188	2-1/16"	12-1/4"

- Band: 1/2" 201 Stainless Steel
- Screw: 15/16 Slotted, Carbon Steel
- Housing: 301 Stainless Steel

Item Number	Min. Diameter	Max. Diameter
TGHC-03-006	3/8"	7/8"
TGHC-03-008	7/16"	1"
TGHC-03-010	9/16"	1-1/16"
TGHC-03-012	9/16"	1-1/4"
TGHC-03-016	11/16"	1-1/2"
TGHC-03-020	3/4"	1-3/4"
TGHC-03-024	1-1/16"	2"
TGHC-03-028	1-5/16"	2-1/4"
TGHC-03-032	1-9/16"	2-1/2"
TGHC-03-036	1-13/16"	2-3/4"
TGHC-03-040	2-1/16"	3"
TGHC-03-044	2-5/16"	3-1/4"
TGHC-03-048	2-9/16"	3-1/2"
TGHC-03-052	2-13/16"	3-3/4"
TGHC-03-056	3-1/16"	4"





## MECHANICS VISE

- High Quality Grey Iron Casting
- Precision Machined Hardened Steel Jaws (Replaceable)
- Solid Base (Swivel Attachment Available)



Item Number	Jaw Width	Jaw Opening	Jaw Depth
TGV-003	4"	4"	2-3/8"
TGV-005	5"	5"	2-7/8"
TGV-006	6"	6"	3-1/3"
TGV-008	8"	7-7/8"	4"

## MECHANICS VISE: ACCESSORIES & PARTS



Item Number	Description
TGV-013	Swivel Base for #3 Vise
TGV-015	Swivel Base for #5 Vise
TGV-016	Swivel Base for #6 Vise
TGV-018	Swivel Base for #8 Vise
TGV-023	Replacement Jaw Plates and Screws for #3 Vise
TGV-025	Replacement Jaw Plates and Screws for #5 Vise
TGV-026	Replacement Jaw Plates and Screws for #6 Vise
TGV-028	Replacement Jaw Plates and Screws for #8 Vise

## MECHANICS VISE, RECORD

- Gray Iron Casting
- Machined to Precise Tolerances
- Solid Base



Item Number	Jaw Width	Jaw Opening	Jaw Depth
REC1	3"	3-3/4"	1-7/8"
REC3	4"	4-3/4"	2-3/4"
REC4	4.5"	5-1/2"	3"
REC5	5"	6-1/2"	3-1/4"
REC6	6"	8"	3-1/2"
REC8	8"	9-1/4"	4"

## GREASE GUN, LEVER TYPE

- 2-Way Loading (Bulk or Cartridge)
- Capacity: 14 ounces (Bulk or Cartridge)
- Operating Pressure 10,000 psi
- Includes 2 Nozzle Extensions:
  - 1 - 12" Flexible & 1 - 6" Rigid



Item Number	Description
TG-GG14	14 oz. Lever Handle Grease Gun



## INDUSTRIAL WIPERS

- Colour: White



Item Number	Dimensions	Box Qty.
TG-MPDRC3500	12.5" x 13"	56
TG-MPDRC3500P	9" x 16"	100
TG-MPLT-6000P	14.7" x 16.6"	140
TG-MPLT-6001P	4" x 8"	280
TG-MPMW-60CPJ	12" x 13.4"	1100
TG-MPMW-60DB	11.5" x 16.8"	180
TG-MPMW-70-DOB	12" x 17"	150
TG-MPMW-70-P	9" x 17"	100
TG-MPMW-80-P	9" x 17"	100

## TARPS, HEAVY DUTY

- Weave: 10 x 10
- GSM: 110
- H.D.P.E. (High Density Polyethylene)
- Aluminum Grommets Every 3'
- Polyethylene Rope Reinforced Hems

**Finished Size Slightly Smaller due to Hem Allowance**



Item Number	Dimensions	Colour
TARP-0608-BLUE-10x10	6' X 8'	Blue
TARP-0810-BLUE-10x10	8' X 10'	Blue
TARP-1012-BLUE-10x10	10' X 12'	Blue
TARP-1015-BLUE-10x10	10' X 15'	Blue
TARP-1520-BLUE-10x10	15' X 20'	Blue
TARP-1824-BLUE-10x10	18' X 24'	Blue
TARP-2030-BLUE-10x10	20' X 30'	Blue
TARP-3040-BLUE-10x10	30' X 40'	Blue
TARP-3050-BLUE-10x10	30' X 50'	Blue
TARP-4050-BLUE-10x10	40' X 50'	Blue
TARP-4060-BLUE-10x10	40' X 60'	Blue

## TARPS, REGULAR DUTY

- Weave: 8 x 8
- GSM: 85
- H.D.P.E. (High Density Polyethylene)
- Aluminum Grommets Every 3'
- Polyethylene Rope Reinforced Hems

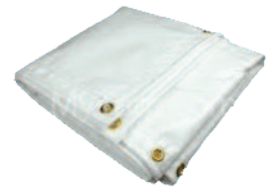
**Finished Size Slightly Smaller due to Hem Allowance**



Item Number	Dimensions	Colour
TARP-0608-BLUE	6' X 8'	Blue
TARP-0810-BLUE	8' X 10'	Blue
TARP-1012-BLUE	10' X 12'	Blue
TARP-1015-BLUE	10' X 15'	Blue
TARP-1520-BLUE	15' X 20'	Blue
TARP-1824-BLUE	18' X 24'	Blue
TARP-2030-BLUE	20' X 30'	Blue
TARP-3040-BLUE	30' X 40'	Blue
TARP-3050-BLUE	30' X 50'	Blue
TARP-4050-BLUE	40' X 50'	Blue
TARP-4060-BLUE	40' X 60'	Blue

- Weave: 8 x 8
- GSM: 85
- H.D.P.E. (High Density Polyethylene)
- Aluminum Grommets Every 3'
- Polyethylene Rope Reinforced Hems

**Finished Size Slightly Smaller due to Hem Allowance**



Item Number	Dimensions	Colour
TARP-0608-CLEAR	6' X 8'	White
TARP-0810-CLEAR	8' X 10'	White
TARP-1012-CLEAR	10' X 12'	White
TARP-1015-CLEAR	10' X 15'	White
TARP-1520-CLEAR	15' X 20'	White
TARP-1824-CLEAR	18' X 24'	White
TARP-2030-CLEAR	20' X 30'	White
TARP-3050-CLEAR	30' X 50'	White
TARP-4060-CLEAR	40' X 60'	White



## ARCTIC BLUE EXTENSION CORDS

- TPE Rubber Extension Cord
- Jacket Type: SJEOW
- Colour: Blue & Orange
- Power Indicator Light
- Oil & Water Resistant
- Flame Retardant
- Temperature Range: -50°C to 105°C  
-58°F to 221°F



Item Number	Length	AWG	Outlets
LT530725	25'	14/3	Single
LT530730	50'	14/3	Single
LT530735	100'	14/3	Single

Item Number	Length	AWG	Outlets
LT530825	25'	12/3	Single
LT530830	50'	12/3	Single
LT530835	100'	12/3	Single

Item Number	Length	AWG	Outlets
LT630825	25'	12/3	Triple
LT630830	50'	12/3	Triple
LT630835	100'	12/3	Triple

## NEON FLEX EXTENSION CORDS

- Jacket Type: SJTW
- High Visibility Colours
- Outlets: TRIPLE
- Power Indicator Light
- Temperature Range: -50°C to 105°C  
-58°F to 221°F

Item Number	Length	AWG	Colour
NS610725	25'	14/3	Yellow (Neon)
NS610730	50'	14/3	Yellow (Neon)
NS610735	100'	14/3	Yellow (Neon)

## NEON FLEX EXTENSION CORDS

- Jacket Type: SJTW
- High Visibility Colours
- Outlets: SINGLE
- Power Indicator Light
- Temperature Range: -50°C to 105°C  
-58°F to 221°F



Item Number	Length	AWG	Colour
NS512830	50'	12/3	Green (Neon)
NS512835	100'	12/3	Green (Neon)
NS514830	50'	12/3	Blue (Neon)
NS514835	100'	12/3	Blue (Neon)
NS515830	50'	12/3	Red (Neon)
NS515835	100'	12/3	Red (Neon)
NS516830	50'	12/3	Purple (Neon)
NS516835	100'	12/3	Purple (Neon)

- Jacket Type: SJTW
- High Visibility Colours
- Outlets: SINGLE
- Power Indicator Light
- Temperature Range: -50°C to 105°C  
-58°F to 221°F

Item Number	Length	AWG	Colour
NSPL512725	25'	14/3	Green (Neon)
NSPL512730	50'	14/3	Green (Neon)
NSPL512735	100'	14/3	Green (Neon)
NSPL514725	25'	14/3	Blue (Neon)
NSPL514730	50'	14/3	Blue (Neon)
NSPL514735	100'	14/3	Blue (Neon)
NSPL514835	100'	12/3	Blue (Neon)



## BULLDOG TOUGH EXTENSION CORDS

- Jacket Type: SJTOW
- Colour: Yellow
- Power Indicator Light
- Oil & Water Resistant
- Flame Retardant
- Abrasion Resistant
- Temperature Range: -50°C to 105°C  
-58°F to 221°F



Item Number	Length	AWG	Outlets
LT511725	25'	14/3	1
LT511730	50'	14/3	1
LT511735	100'	14/3	1
LT511825	25'	12/3	1
LT511830	50'	12/3	1
LT511835	100'	12/3	1

## HIGH VISIBILITY EXTENSION CORDS

- Kenworth Truck Cord
- Vinyl Extension Cord
- Jacket Type: SJTW
- Colour: Blue Neon
- Power Indicator Light
- Water Resistant
- Flame Retardant
- Temperature Range: -50°C to 105°C  
-58°F to 221°F



Item Number	Length	AWG	Outlets
NST514825	25'	12/3	20A T-Slot
NST514830	50'	12/3	20A T-Slot
NST514835	100'	12/3	20A T-Slot

## OUTDOOR EXTENSION CORDS

- Jacket Type: SJTW
- Outlets: SINGLE
- Colour: Orange
- Water Resistant
- Flame Retardant
- Abrasion Resistant
- Nickel-Coated Brass Blades  
Resist Corrosion



### MEDIUM DUTY

Item Number	Length	AWG	AMPS
EC501610	10'	16/3	13
EC501625	25'	16/3	13
EC501630	50'	16/3	13
EC501635	100'	16/3	10

### HEAVY DUTY

Item Number	Length	AWG	AMPS
EC501725	25'	14/3	15
EC501730	50'	14/3	15
EC501735	100'	14/3	13

### EXTRA HEAVY DUTY

Item Number	Length	AWG	AMPS
EC500825	25'	12/3	15
EC500830	50'	12/3	15
EC500835	100'	12/3	13



### WORK LIGHT

- Metal Bulb Guard
- Hanging Hook
- On/Off Switch in Handle
- Outlet in Handle (Grounded)
- Uses 75 Watt Type "A" Bulb
- 25' Cord



Item Number	AWG	Jacket	Colour
TL010625	16/3	SJT	Yellow

### WORK LIGHT

- Metal Bulb Guard
- Hanging Hook
- On/Off Switch in Handle
- Outlet in Handle (Grounded)
- Uses 75 Watt Type "A" Bulb
- 25' Cord
- Oil and Water Resistant



Item Number	AWG	Lights	Length
TL020625	16/3	SJEOW	Blue & Orange

### WORK LIGHT, HALOGEN

- Tempered Glass Lens
- Wire Grill Shield
- Portable
- 500 Watt halogen bulb
- Cord Colour: Yellow



Item Number	AWG	Jacket	Length
TGFL-301	18/3	SJTW	6'

### WORK LIGHT TRI-POD

- Tri-Pod Stand
- Adjustable Height
- Tempered Glass Lens
- Wire Grill Shield
- Portable
- 500 Watt halogen bulb
- Cord Colour: Yellow



Item Number	AWG	Jacket	Length
TGFL-302	18/3	SJTW	6'

### HALOGEN BULBS



Item Number	Description
TGFL-393	300W Quartz Halogen Replacement Bulb
TGFL-395	500W Quartz Halogen Replacement Bulb

### STRING LIGHTS

- Lights at 10' Intervals
- Dipped Metal Bulb Cages
- Uses 150 Watt Type "A" Bulbs
- Ceiling Mount Above Each Socket
- Wire Type: SJW
- Wire Colour: Yellow0



Item Number	AWG	Lights	Length
LSUGM1830	12/3	5	50'
LSUGM1835	12/3	10	100'



## CABLE TIES

- Material: Nylon
- CSA Approved
- Low Insertion and Pull Through Force
- Higher Tensile Strength Achieved From One Piece Design



Item Number (100 Package)	Item Number (1,000 Package)	Colour	Tensile Strength	Length	Width	Thickness
A-04-18-9-C	A-04-18-9-M	Natural White	18 lb.	4.10	.095	.042
A-04-18-0-C	A-04-18-0-M	UV Black	18 lb.	4.10	.095	.042
A-06-18-9-C	A-06-18-9-M	Natural White	18 lb.	6.18	.095	.042
A-06-18-0-C	A-06-18-0-M	UV Black	18 lb.	6.18	.095	.042
A-08-18-9-C	A-08-18-9-M	Natural White	18 lb.	8.10	.095	.042
A-08-18-0-C	A-08-18-0-M	UV Black	18 lb.	8.10	.095	.042

Item Number (100 Package)	Item Number (1,000 Package)	Colour	Tensile Strength	Length	Width	Thickness
A-05-40-9-C	A-05-40-9-M	Natural White	40 lb.	5.80	.140	.049
A-05-40-0-C	A-05-40-0-M	UV Black	40 lb.	5.80	.140	.049
A-08-40-9-C	A-08-40-9-M	Natural White	40 lb.	8.80	.140	.049
A-08-40-0-C	A-08-40-0-M	UV Black	40 lb.	8.80	.140	.049
A-11-40-0-C	-	Natural White	40 lb.	10.96	.140	.049
A-11-40-9-C	-	UV Black	40 lb.	10.96	.140	.049
A-14-40-0-C	-	Natural White	40 lb.	14.25	.140	.049
A-14-40-9-C	-	UV Black	40 lb.	14.25	.140	.049

Item Number (100 Package)	Item Number (1,000 Package)	Colour	Tensile Strength	Length	Width	Thickness
A-07-50-0-C	A-07-50-0-M	Natural White	50 lb.	7.50	.180	.052
A-07-50-9-C	A-07-50-9-M	UV Black	50 lb.	7.50	.180	.052
A-11-50-0-C	-	Natural White	50 lb.	11.20	.180	.052
A-11-50-9-C	-	UV Black	50 lb.	11.20	.180	.052
A-14-50-0-C	-	Natural White	50 lb.	14.25	.180	.052
A-14-50-9-C	-	UV Black	50 lb.	14.25	.180	.052
A-17-50-0-C	-	Natural White	50 lb.	17.00	.180	.052
A-17-50-9-C	-	UV Black	50 lb.	17.00	.180	.052



## CABLE TIES

- Material: Nylon
- CSA Approved
- Low Insertion and Pull Through Force
- Higher Tensile Strength Achieved From One Piece Design



Item Number (50 Package)	Item Number (100 Package)	Colour	Tensile Strength	Length	Width	Thickness
-	A-08-120-9-C	Natural White	120 lb.	8.70	.300	.076
-	A-08-120-0-C	UV Black	120 lb.	8.70	.300	.076
-	A-14-120-9-C	Natural White	120 lb.	15.00	.300	.076
-	A-14-120-0-C	UV Black	120 lb.	15.00	.300	.076
A-18-120-9-L	-	Natural White	120 lb.	18.40	.300	.076
A-18-120-0-L	-	UV Black	120 lb.	18.40	.300	.076

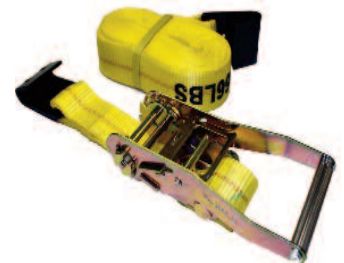
Item Number (50 Package)	Item Number (100 Package)	Colour	Tensile Strength	Length	Width	Thickness
A-24-175-9-L	-	Natural White	175 lb.	25.20	.340	.090
A-24-175-0-L	-	UV Black	175 lb.	25.20	.340	.090
A-36-175-9-L	-	Natural White	175 lb.	37.20	.340	.090
A-36-175-0-L	-	UV Black	175 lb.	37.20	.340	.090

## RATCHET STRAPS

- Double-J Hooks
- Heavy-Duty Ratchet Tie-Down
- Nylon Woven Straps
- Straps: Yellow
- Handle Marked with WLL
- Strap Marked with WLL & BS



- Flat Hook
- Heavy-Duty Ratchet Tie-Down
- Nylon Woven Straps
- Straps: Yellow
- Handle Marked with WLL
- Strap Marked with WLL & BS



Item Number	Size	Breaking Strength	Working Load Limit
RS-116 CE	16' x 1"	3,000 lbs.	1,500 lbs
RS-227 CE	27' x 2"	11,000 lbs.	5,000 lbs

Item Number	Size	Breaking Strength	Working Load Limit
RS-227 FLAT CE	27' x 2"	11,000 lbs.	5,000 lbs



## WEB SLINGS

- Type 3, 2 Ply
- Double Eye
- Vertical WLL: 6,400 lbs
- Choker WLL: 4,800 lbs
- Basket WLL: 12,800 lbs



Item Number	Width	Length
TGWS0202	2"	2'
TGWS0204	2"	4'
TGWS0206	2"	6'
TGWS0208	2"	8'
TGWS0210	2"	10'
TGWS0212	2"	12'
TGWS0216	2"	16'

## ROPE

- 3-Strand Polypropylene Twisted
- ABS Riveted Reels
- Colour: Yellow



Item Number	Diameter	Length	Break Strength
TGR-3/16-B	3/16"	2125'	520 lbs
TGR-1/4-B	1/4"	1300'	900 lbs
TGR-5/16-B	5/16"	975'	1,368 lbs
TGR-3/8-B	3/8"	630'	1,944 lbs
TGR-1/2-B	1/2"	335'	3,024 lbs
TGR-5/8-B	5/8"	200'	4,464 lbs
TGR-3/4-B	3/4"	125"	6,120 lbs

## FLASHLIGHTS



Item Number	Body	Bulb	Batteries*
TGFL-102	Aluminum	3W LED	2 - AA
TGFL-101	ABS Plastic	1 NICHIA LED	2 - AA
TGFL-012	Aluminum	12 LED	3 - AAA
TGFL-008	Aluminum	8 LED	3 - AAA



## Abrasives

## THIN CUT-OFF WHEELS

- Type 1 - Stainless Steel / Metal Combination Wheel
- Arbor: 7/8"
- Thickness: 3/64"
- Pack Quantity: 25



Item Number	Diameter	Arbor	Max RPM
TGCW-111-045	4.5"	7/8"	13,300
TGCW-111-050	5.0"	7/8"	12,200





## MOUNTED FLAP WHEELS

- X Cloth - Aluminum Oxide
- 1/4 Shank



1.5" Diameter Flap Wheel Item Number	2" Diameter Flap Wheel Item Number	2.5" Diameter Flap Wheel Item Number	Width	Grit
Width 0.375"				
TGFW-RL153814040	TGFW-RL23814040	-	0.375	40
TGFW-RL153814060	TGFW-RL23814060	-	0.375	60
TGFW-RL153814080	TGFW-RL23814080	-	0.375	80
TGFW-RL153814120	TGFW-RL23814120	-	0.375	120
TGFW-RL153814180	TGFW-RL23814180	-	0.375	180
TGFW-RL153814240	TGFW-RL23814240	-	0.375	240
TGFW-RL153814320	TGFW-RL23814320	-	0.375	320
Width 0.5"				
TGFW-RL15514040	TGFW-RL2514040	TGFW-RL25514040	0.5	40
TGFW-RL15514060	TGFW-RL2514060	TGFW-RL25514060	0.5	60
TGFW-RL15514080	TGFW-RL2514080	TGFW-RL25514080	0.5	80
TGFW-RL15514120	TGFW-RL2514120	TGFW-RL25514120	0.5	120
TGFW-RL15514180	TGFW-RL2514180	TGFW-RL25514180	0.5	180
TGFW-RL15514240	TGFW-RL2514240	TGFW-RL25514240	0.5	240
TGFW-RL15514320	TGFW-RL2514320	TGFW-RL25514320	0.5	320
Width 0.625"				
TGFW-RL155814040	TGFW-RL25814040	-	0.625	40
TGFW-RL155814060	TGFW-RL25814060	-	0.625	60
TGFW-RL155814080	TGFW-RL25814080	-	0.625	80
TGFW-RL155814120	TGFW-RL25814120	-	0.625	120
TGFW-RL155814180	TGFW-RL25814180	-	0.625	180
TGFW-RL155814240	TGFW-RL25814240	-	0.625	240
TGFW-RL155814320	TGFW-RL25814320	-	0.625	320



## MOUNTED FLAP WHEELS

- X Cloth - Aluminum Oxide
- 1/4 Shank



1.5" Diameter Flap Wheel Item Number	2" Diameter Flap Wheel Item Number	2.5" Diameter Flap Wheel Item Number	Width	Grit
Width 0.75"				
TGFW-RL153414040	TGFW-RL23414040	-	0.75	40
TGFW-RL153414060	TGFW-RL23414060	-	0.75	60
TGFW-RL153414080	TGFW-RL23414080	-	0.75	80
TGFW-RL153414120	TGFW-RL23414120	-	0.75	120
TGFW-RL153414180	TGFW-RL23414180	-	0.75	180
TGFW-RL153414240	TGFW-RL23414240	-	0.75	240
TGFW-RL153414320	TGFW-RL23414320	-	0.75	320
Width 1"				
TGFW-RL15114040	TGFW-RL2114040	TGFW-RL25114040	1	40
TGFW-RL15114060	TGFW-RL2114060	TGFW-RL25114060	1	60
TGFW-RL15114080	TGFW-RL2114080	TGFW-RL25114080	1	80
TGFW-RL15114120	TGFW-RL2114120	TGFW-RL25114120	1	120
TGFW-RL15114180	TGFW-RL2114180	TGFW-RL25114180	1	180
TGFW-RL15114240	TGFW-RL2114240	TGFW-RL25114240	1	240
TGFW-RL15114320	TGFW-RL2114320	TGFW-RL25114320	1	320
Width 1.5"				
TGFW-RL151514040	TGFW-RL21514040	TGFW-RL251514040	1.5	40
TGFW-RL151514060	TGFW-RL21514060	TGFW-RL251514060	1.5	60
TGFW-RL151514080	TGFW-RL21514080	TGFW-RL251514080	1.5	80
TGFW-RL151514120	TGFW-RL21514120	TGFW-RL251514120	1.5	120
TGFW-RL151514180	TGFW-RL21514180	TGFW-RL251514180	1.5	180
TGFW-RL151514240	TGFW-RL21514240	TGFW-RL251514240	1.5	240
TGFW-RL151514320	TGFW-RL21514320	TGFW-RL251514320	1.5	320



### TRAFFIC VESTS

- 2" 3M Scotchlite® Reflective Tape
- 5-Point Tear Away
- 100% Polyester Mesh
- CSA Z96-09 Class 2, Level 2
- ANSI / ISEA 107-2004
- WCB Standard 2-1997
- BC MoT T09-05



Item Number	Colour	Size	Back
TGVEST-001	Orange	One Size	"X"

- 2" 3M Scotchlite® Reflective Tape
- 5-Point Tear Away
- 100% Polyester Mesh
- CSA Z96-09 Class 2, Level 2
- ANSI / ISEA 107-2004
- WCB Standard 2-1997
- BC MoT T09-05



Item Number	Colour	Size	Back
TGVEST-002	Lime	One Size	"X"

- 2" Reflective Tape
- 5-Point Tear Away
- 100% Polyester Mesh
- CSA Z96-09 Class 2, Level 2
- ANSI / ISEA 107-2004
- WCB Standard 2-1997
- BC MoT T09-05



Item Number	Colour	Size	Back
TGVEST-005	Orange	One Size	"X"

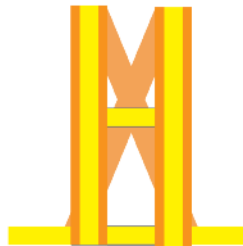
- 3M Scotchlite® Reflective Tape
- 5-Point Tear Away
- 100% Solid Polyester
- CSA Z96-09 Class 2, Level 2
- ANSI / ISEA 107-2004
- WCB Standard 2-1997
- BC MoT T09-05



Item Number	Colour	Size	Back
TGVEST-003-01	Orange	S / M	"X"
TGVEST-003-03	Orange	L / XL	"X"
TGVEST-003-05	Orange	2XL / 3XL	"X"

### TRAFFIC HARNESS

- 2" Reflective Tape
- 100% Solid Nylon
- Meets CSA Standards



Item Number	Colour	Size	Back
TGVEST-008-01	Orange	Medium	"X"
TGVEST-008-02	Orange	Large	"X"
TGVEST-008-03	Orange	X-Large	"X"
TGVEST-008-04	Orange	2X-Large	"X"

- 3M Scotchlite® Reflective Tape
- 5-Point Tear Away
- 100% Solid Polyester
- CSA Z96-09 Class 2, Level 2
- ANSI / ISEA 107-2004
- WCB Standard 2-1997
- BC MoT T09-05



Item Number	Colour	Size	Back
TGVEST-004-01	Lime	S / M	"X"
TGVEST-004-03	Lime	L / XL	"X"
TGVEST-004-05	Lime	2XL / 3XL	"X"



## 18" TRAFFIC CONES

- High Visibility Orange
- PVC Construction
- Temperature Range: -20°C to +50°C
- Wide Body Design
- Black Rubber Base



Item Number	Collar	Base	Weight
TGTC-1801	-	10-5/8" x 10-5/8"	3 lbs.
TGTC-1802	(1) 4"	10-5/8" x 10-5/8"	3 lbs.
TGTC-1803	(1) 6"	10-5/8" x 10-5/8"	3 lbs.

## DELINEATOR POSTS

- High Visibility Orange
- Polyethylene Post
- Post Height: 45"
- Black Rubber Base
- 16.5" wide x 1.5" high Octagon Base
- (2) 4" - Type 1200 Collars



Item Number	Colour	Weight	Collars
TGTD-4513	Orange	13 lbs	(2) 4"

## FLAGGING TAPE

- High Visibility Colours
- Indoor or Outdoor Use
- 1" x 200'
- Mapping, Surveying, Forestry and Tagging



Item Number	Colour	Size	Material
TGFT-1X200ORANGE	Orange	1" x 200'	
TGFT-1X200RED	Red	1" x 200'	

## 28" TRAFFIC CONES

- High Visibility Orange
- PVC Construction
- Temperature Range: -20°C to +50°C
- Wide Body Design
- Black Rubber Base



Item Number	Collar	Base	Weight
TGTC-2801	-	14" x 14"	7 lbs.
TGTC-2802	(1) 4"	14" x 14"	7 lbs.
TGTC-2803	(1) 4" & (1) 6"	14" x 14"	7 lbs.

## BARRICADE BAR

- Telescopic barricade bar
- High Visibility Black & Yellow
- Adjustable Length: 45" to 100"
- Used in Combination with Standard Traffic Cones



Item Number	Description
TGTC-BAR	Telescopic barricade bar: 45" to 100"

## BARRICADE TAPE

- Polyethylene Film
- Thickness: 0.04 mm
- 3" x 100'
- Dispenser Box



Item Number	Description	Colour
TGCT-3X1000CAUTION-B	CAUTION	Yellow
TGCT-3X1000DANGER-B	DANGER	Red
TGCT-3X1000DDNE-B	DANGER DO NOT ENTER	Red
TGCT-3X1000DNGRYLW-B	DANGER	Yellow
TGCT-3x1000CMW	CAUTION MEN WORKING	Yellow



## DISPOSABLE COVERALLS

- Microporous SF Material
- 50 GSM
- Colour: White
- Lightweight and Breathable
- Zipper front
- Attached Hood
- Elastic Wrists, Ankles & Waist



Item Number	Size	Colour	Weight
TGDC50-L	Large	White	50 GSM
TGDC50-XL	X-Large	White	50 GSM
TGDC50-2XL	2X-Large	White	50 GSM
TGDC50-3XL	3X-Large	White	50 GSM

- Microporous SF Material
- 60 GSM
- Colour: White
- Lightweight and Breathable
- Zipper front
- Attached Hood
- Elastic Wrists, Ankles & Waist



Item Number	Size	Colour	Weight
TGDC60-L	Large	White	60 GSM
TGDC60-XL	X-Large	White	60 GSM
TGDC60-2XL	2X-Large	White	60 GSM
TGDC60-3XL	3X-Large	White	60 GSM

## RAINWEAR

- PVC with Polyester Backing
- Thickness .30 mil
- Colour: Yellow
- 3 Pieces: Jacket, Hood & Bib-Style Pants
- Ultrasonically Welded Seams
- Cape Back and Underarm Vents



Item Number	Size	Colour	Thickness
TGRW-1010	Medium	Yellow	.30 mil
TGRW-1020	Large	Yellow	.30 mil
TGRW-1030	X-Large	Yellow	.30 mil
TGRW-1040	2X-Large	Yellow	.30 mil
TGRW-1050	3X-Large	Yellow	.30 mil

## RAINWEAR, FIRE-RETARDANT

- PVC/Polyester/PVC Construction
- Thickness .35 mil
- Colour: Yellow
- 3 Pieces: Jacket, Hood & Bib-Style Pants
- Ultrasonically Welded Seams
- Cape Back and Underarm Vents



Item Number	Size	Colour	Thickness
TGRW-2010	Medium	Yellow	.35 mil
TGRW-2020	Large	Yellow	.35 mil
TGRW-2030	X-Large	Yellow	.35 mil
TGRW-2040	2X-Large	Yellow	.35 mil
TGRW-2050	3X-Large	Yellow	.35 mil

## BALACLAVA



Item Number	Colour	Size	Material
TGWC-220	Black	Large	Polyester

## HEAD WARMER



Item Number	Colour	Size	Material
TGWC-200	Red	Large	Polyester



## GLOVES, DISPOSABLE

- 4mil Nitrile, Powder Free
- CFIA Certified
- Colour: Light Blue
- Textured Finger Tips
- Length: 9.5" (240mm)
- Cuff: Beaded



Item Number	Size	Material	Thickness
TGG-107-07	Small	Nitrile	4 mil
TGG-107-08	Medium	Nitrile	4 mil
TGG-107-09	Large	Nitrile	4 mil
TGG-107-10	X-Large	Nitrile	4 mil

- 5mil Nitrile, Powder Free
- CFIA Certified
- Colour: Dark Blue
- Textured Finger Tips
- Length: 9.5" (240mm)
- Cuff: Beaded



Item Number	Size	Material	Thickness
TGG-110-07	Small	Nitrile	5 mil
TGG-110-08	Medium	Nitrile	5 mil
TGG-110-09	Large	Nitrile	5 mil
TGG-110-10	X-Large	Nitrile	5 mil

## GLOVES, COATED

- 13 Gauge Kevlar Shell
- Shell Colour: Yellow
- Lightweight Nitrile Foam Palm
- Palm Colour: Black
- CE Rating: 4342



Item Number	Size	Shell	CE
TGG-209-07	Small	Kevlar	4342
TGG-209-08	Medium	Kevlar	4342
TGG-209-09	Large	Kevlar	4342
TGG-209-10	X-Large	Kevlar	4342
TGG-209-11	2X-Large	Kevlar	4342

- 10 Gauge Poly-Cotton
- Shell Colour: Blue
- Natural Rubber Latex Palm
- Palm Colour: Blue
- CE Rating: 3141
- Cold Weather Glove



Item Number	Size	Shell	CE
TGG-220-06	X-Small	Poly-Cotton	3141
TGG-220-07	Small	Poly-Cotton	3141
TGG-220-08	Medium	Poly-Cotton	3141
TGG-220-09	Large	Poly-Cotton	3141
TGG-220-10	X-Large	Poly-Cotton	3141
TGG-220-11	2X-Large	Poly-Cotton	3141

## Coated Shell Glove - Colour Coded Sizing

Size	Number Size	Cuff Trim	Size	Number Size	Cuff Trim
Extra-Small	6	<b>WHITE</b>	Large	9	<b>RED</b>
Small	7	<b>YELLOW</b>	Extra-Large	10	<b>BLACK</b>
Medium	8	<b>GREEN</b>	2X-Large	11	<b>BLUE</b>



## GLOVES, COATED

- 13 Gauge Nylon
- Shell Colour: Black
- Polyurethane Palm
- Palm Colour: Black
- CE Rating: 4141



Item Number	Size	Shell	CE
TGG-206-06	X-Small	Nylon	4141
TGG-206-07	Small	Nylon	4141
TGG-206-08	Medium	Nylon	4141
TGG-206-09	Large	Nylon	4141
TGG-206-10	X-Large	Nylon	4141
TGG-206-11	2X-Large	Nylon	4141

- 13 Gauge Polyester
- Shell Colour: Grey
- Nitrile Palm
- Palm Colour: Black
- CE Rating: 4122



Item Number	Size	Shell	CE
TGG-200-06	X-Small	Polyester	4122
TGG-200-07	Small	Polyester	4122
TGG-200-08	Medium	Polyester	4122
TGG-200-09	Large	Polyester	4122
TGG-200-10	X-Large	Polyester	4122
TGG-200-11	2X-Large	Polyester	4122

- 13 Gauge Polyester
- Shell Colour: Black
- Foam Nitrile Palm
- Palm Colour: Grey
- CE Rating: 4122



Item Number	Size	Shell	CE
TGG-202-06	X-Small	Polyester	4122
TGG-202-07	Small	Polyester	4122
TGG-202-08	Medium	Polyester	4122
TGG-202-09	Large	Polyester	4122
TGG-202-10	X-Large	Polyester	4122
TGG-202-11	2X-Large	Polyester	4122

- Mechanics Glove
- Full Palm
- Shirred Cuff
- Leather: Deerskin
- Unlined



Item Number	Size	Leather	Lining
TGG-516-L	Large	Deer	Unlined
TGG-516-XL	X-Large	Deer	Unlined

- Mechanics Glove
- Full Palm
- Shirred Cuff
- Leather: Deerskin
- 3M C40 Thinsulate Lined

Item Number	Size	Leather	Lining
TGG-517-L	Large	Deer	Thinsulate
TGG-517-XL	X-Large	Deer	Thinsulate



## GLOVES, LEATHER

- Fitters Glove
- Patch Palm
- Rubberized Safety Cuff
- Leather: Grain Cowhide
- Cotton Lined



Item Number	Size	Leather	Lining
TGG-400-L	Large	Grain	Cotton Palm

- Fitters Glove
- Full Palm
- Rubberized Safety Cuff
- Leather: Grain Cowhide
- Cotton Lined



Item Number	Size	Leather	Lining
TGG-401-L	Large	Grain	Cotton Palm
TGG-401-XL	X-Large	Grain	Cotton Palm

- Fitters Glove
- Patch Palm
- Rubberized Safety Cuff
- Leather: Split Cowhide
- Unlined



Item Number	Size	Leather	Lining
TGG-416-L	Large	Split	Cotton

- Fitters Glove
- Full Palm
- Rubberized Safety Cuff
- Leather: Split Cowhide
- Cotton Lined



Item Number	Size	Leather	Lining
TGG-414-L	Large	Split	Cotton

- Fitters Glove
- Full Palm
- Rubberized Safety Cuff
- Gauntlet Cuff 4'5"
- Leather: Grain Cowhide
- Cotton Lined



Item Number	Size	Leather	Lining
TGG-418-L	Large	Split	Unlined

- Drivers Glove
- Full Palm
- Shirred Cuff
- Leather: Grain Cowhide
- Unlined



Item Number	Size	Leather	Lining
TGG-408-M	Medium	Grain	Unlined
TGG-408-L	Large	Grain	Unlined
TGG-408-XL	X-Large	Grain	Unlined





## GLOVES, LEATHER

- Drivers Glove
- Full Palm
- Shirred Cuff
- Leather: Grain Cowhide
- Cotton Lined



Item Number	Size	Leather	Lining
TGG-404-M	Medium	Grain	Cotton
TGG-404-L	Large	Grain	Cotton
TGG-404-XL	X-Large	Grain	Cotton

- Fitters Glove
- Full Palm
- Rubberized Safety Cuff
- Leather: Grain Cowhide
- Boa Lined



Item Number	Size	Leather	Lining
TGG-412-L	Large	Grain	BOA
TGG-412-XL	X-Large	Grain	BOA

- Fitters Glove
- Full Palm
- Rubberized Safety Cuff
- Leather: Pigskin
- 3M 100g Thinsulate Lined



Item Number	Size	Leather	Lining
TGG-514-L	Large	Pigskin	3M Thinsulate

- Fitters Glove
- Full Palm
- Rubberized Safety Cuff
- Leather: Grain Cowhide
- 3M 100g Thinsulate Lined



Item Number	Size	Leather	Lining
TGG-513-L	Large	Grain	3M Thinsulate
TGG-513-XL	X-Large	Grain	3M Thinsulate
TGG-513-2XL	2X-Large	Grain	3M Thinsulate

- Fitters Glove
- Full Palm
- Rubberized Safety Cuff
- Leather: Split Cowhide
- 3M 40g Thinsulate Lined



Item Number	Size	Leather	Lining
TGG-511-L	Large	Split	3M Thinsulate
TGG-511-XL	X-Large	Split	3M Thinsulate

- Fitters Glove
- Full Palm
- Rubberized Safety Cuff
- Leather: Split Cowhide
- 3M 100g Thinsulate Lined



Item Number	Size	Leather	Lining
TGG-512-L	Large	Split	3M Thinsulate
TGG-512-XL	X-Large	Split	3M Thinsulate



## GLOVES, LEATHER

- Welders Glove
- One-Finger Mitt
- Leather: Split Cowhide
- Thermal Cotton Lined



Item Number	Size	Leather	Lining
TGG-502-L	Large	Split	Thermal

- Welders Glove
- Five-Finger Glove
- Leather: Split Cowhide
- Thermal Cotton Lined



Item Number	Size	Leather	Lining
TGG-507-L	Large	Split	Thermal

- Fitters Glove
- Full Palm
- Knit Wrist Cuff
- Leather: Grain Cowhide
- Fleece Lined



Item Number	Size	Leather	Lining
TGG-403-L	Large	Grain	Fleece

## GLOVES, COTTON

- Split Cowhide Palm
- Cotton Back
- Knit Wrist, Cotton Cuff
- Unlined



Item Number	Size	Leather	Lining
TGG-606-L	Large	Split	Unlined

- String Knit Glove
- 60% Polyester 40% Cotton
- Knit Wrist Cuff
- Palm: Unlined



Item Number	Size	Material	Lining
TGG-608-L	Large	Poly-Cotton	Unlined

- 8 oz Cotton
- Cotton Palm
- Knit Wrist, Cotton Cuff
- Unlined



Item Number	Size	Material	Lining
TGG-616-L	Large	Cotton	Unlined



## CASTERS

- Blue Elastic Rubber Wheel



Item Number (RIGID)	Item Number (SWIVEL)	Item Number (SWIVEL w BRAKE)	Diameter	Width	Load Rating	Plate Size
TGC-10300-R	TGC-10300-S	TGC-10302-S	3"	1-1/2"	220 lbs.	3-1/16 x 2-3/8
TGC-10400-R	TGC-10400-S	TGC-10402-S	4"	1-1/2"	330 lbs.	3-1/16 x 2-3/8
TGC-10500-R	TGC-10500-S	TGC-10502-S	5"	1-3/4"	440 lbs.	3-1/16 x 2-3/8
TGC-10600-R	TGC-10600-S	TGC-10602-S	6"	2-3/8"	770 lbs.	4-1/8 x 3-1/16

- Orange Polyurethane Wheel
- High Density Polyurethane
- Precision Ball Bearings



Item Number (RIGID)	Item Number (SWIVEL)	Item Number (SWIVEL w BRAKE)	Diameter	Width	Load Rating	Plate Size
TGC-30400-R	TGC-30400-S	TGC-30402-S	4"	2"	600 lbs	3-3/8 x 2-13/16
TGC-30500-R	TGC-30500-S	TGC-30502-S	5"	2"	750 lbs	3-3/8 x 2-13/16
TGC-30600-R	TGC-30600-S	TGC-30602-S	6"	2"	900 lbs	3-3/8 x 2-13/16
TGC-30800-R	TGC-30800-S	TGC-30802-S	8"	2"	900 lbs	3-3/8 x 2-13/16

- Phenolic Wheel
- Needle Bearings

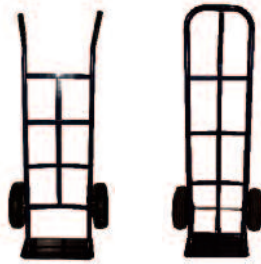


Item Number (RIGID)	Item Number (SWIVEL)	Item Number (SWIVEL w BRAKE)	Diameter	Width	Load Rating	Plate Size
TGC-50400-R	TGC-50400-S	TGC-50402-S	4"	2"	550 lbs	3-3/8 x 2-13/16
TGC-50500-R	TGC-50500-S	TGC-50502-S	5"	2"	700 lbs	3-3/8 x 2-13/16
TGC-50600-R	TGC-50600-S	TGC-50602-S	6"	2"	800 lbs	3-3/8 x 2-13/16
TGC-50800-R	TGC-50800-S	TGC-50802-S	8"	2"	900 lbs	3-3/8 x 2-13/16



## HAND TRUCKS

- Pneumatic Wheels
- 600 lbs. Capacity
- Tubular Steel Frame
- Powder Coat Finish
- Steel Hubs
- Steel Ball Bearings



Item Number	Handle	Height	Weight
TGHT-001	Dual	46"	20 lbs.
TGHT-003	Loop "P"	52"	23 lbs.

- Hard Rubber Wheels
- 600 lbs. Capacity
- Tubular Steel Frame
- Powder Coat Finish
- Steel Hubs
- Steel Ball Bearings



Item Number	Handle	Height	Weight
TGHT-002	Dual	46"	20 lbs.
TGHT-004	Loop "P"	52"	23 lbs.

## CONVERTIBLE HAND TRUCK

- 600 lbs. Capacity
- Converts From 2-Wheel Hand Truck to 4-Wheel Flat Bed Trolley
- Steel Frame
- Solid Rubber Wheels



Item Number	Capacity	Height	Weight
TGHT-005	600 lbs.	51"	33 lbs.

## PALLET TRUCK

- 5,500 lbs. Capacity
- Hand Lever for Selecting "Raise", "Neutral" and "Lower"
- Steel Hub Polyurethane Coated Wheels



Item Number	Capacity	Frame Width	Frame Length
TGPT-52748NS	5,500 lbs.	27"	48"



## LINK CHAIN

• NACM 1990

Item Number	Type	Diameter	Finish	Length	Working Load Limit (lbs)	Proof Test (lbs)	Breaking Force Min
LC1/4-EG-GR70	Grade 70	1/4"	Yellow	400'	3,150	6,100	12,100
LC1/4-EG-GR70-800	Grade 70	1/4"	Yellow	800'	3,150	6,100	12,100
LC5/16-EG-GR70	Grade 70	5/16"	Yellow	250'	4,700	9,400	18,800
LC5/16-EG-GR70-500	Grade 70	5/16"	Yellow	500'	4,700	9,400	18,800
LC3/8-EG-GR70	Grade 70	3/8"	Yellow	200'	6,600	12,400	24,700
LC3/8-EG-GR70-400	Grade 70	3/8"	Yellow	400'	6,600	12,400	24,700
LC1/2-EG-GR70	Grade 70	1/2"	Yellow	100'	11,300	20,900	41,800
LC1/2-EG-GR70-200	Grade 70	1/2"	Yellow	200'	11,300	20,900	41,800
LC3/16-GALV-GR30CDN	Grade 30	3/16"	Galvanized	1,000'	800	1,600	3,200
LC1/4-GALV-GR30CDN	Grade 30	1/4"	Galvanized	525'	1,300	2,600	5,200
LC5/16-GALV-GR30CDN	Grade 30	5/16"	Galvanized	300'	1,900	3,400	6,800
LC3/8-GALV-GR30CDN	Grade 30	3/8"	Galvanized	200'	2,650	5,300	10,600
LC3/16-SC-GR30CDN	Grade 30	3/16"	Self Colour	1,000'	800	1,600	3,200
LC1/4-SC-GR30CDN	Grade 30	1/4"	Self Colour	525'	1,300	2,600	5,200
LC5/16-SC-GR30CDN	Grade 30	5/16"	Self Colour	300'	1,900	3,400	6,800
LC3/8-SC-GR30CDN	Grade 30	3/8"	Self Colour	200'	2,650	5,300	10,600
LC1/8-ZINC-GR30CDN	Grade 30	1/8"	Zinc Coated	1300'	375	800	1,600
LC3/16-SC-GR30CDN	Grade 30	3/16"	Zinc Coated	800'	800	1,600	3,200
LC1/4-SC-GR30CDN	Grade 30	1/4"	Zinc Coated	450'	1,300	2,600	5,200
LC5/16-SC-GR30CDN	Grade 30	5/16"	Zinc Coated	275'	1,900	3,400	6,800
LC3/8-SC-GR30CDN	Grade 30	3/8"	Zinc Coated	200'	2,650	5,300	10,600

## GRAB HOOK

Item Number	Size	Material	WLL (lbs)
CGH-1/4	1/4"	Grade 70	3,150
CGH-5/16	5/16"	Grade 70	4,700
CGH-3/8	3/8"	Grade 70	6,660
CGH-1/2	1/2"	Grade 70	11,300

## CLEVIS SLIP HOOK

Item Number	Size	Material	WLL (lbs)
CGH-1/4	1/4"	Grade 70	2,750
CGH-5/16	5/16"	Grade 70	4,300
CGH-3/8	3/8"	Grade 70	5,250
CGH-1/2	1/2"	Grade 70	9,000



## AEROSOL CHEMICALS

- 230g Aerosol Cans



Item Number	Description
TGFW-RL15114040	Multi Purpose Lube
TGFW-RL15114060	Moly Grease
TGFW-RL15114080	Chain Lube
TGFW-RL15114120	Silicone Lube
TGFW-RL15114180	Odourless Silicone
TGFW-RL15114240	Food Grade Silicone
TGFW-RL15114320	Mould & Die Cleaner

## HAND CLEANER

- Orange Citrus Cleaner with Pumice
- CFIA Approved
- Pump Top



Item Number	Size
TGHC-001	3.5L Bottle with Pump Top

## TAPE DISPENSER

- One-Hand Pistol Grip
- Holds up to 2" Wide Tape with 3" Core



Item Number	Description
TG-19-2900-72	2" Tape Dispenser

## TEFLON TAPE

- PTFE Tape
- 3 mils Thick
- 0.35 grams/cubic centimeter
- White



Item Number	Width	Length	Thickness
10TT03-IDI	1/2"	520"	3 mils

## ELECTRICAL TAPE

- Black PVC
- CSA Approved
- Weather Resistant
- Flame Retardant
- 3/4 x 60' (19mm x 18M)



Item Number	Width	Length	Temperature
TGT-220660	3/4"	60'	-10°C to +80°C



## PAINT BRUSHES

- Red Plastic Handle
- China Bristles, Gray
- General Purpose Applicator Brushes



Item Number	Width	Length	Handle
TGB-3/4	3/4"	1-3/4"	Plastic
TGB-1	1"	1-3/4"	Plastic
TGB-1-1/2	1-1/2"	2"	Plastic
TGB-2	2"	2"	Plastic
TGB-3	3"	2-1/4"	Plastic
TGB-4	4"	2-1/4"	Plastic

- Plain Wood Handle
- China Bristles, White
- Chip Brushes



Item Number	Width	Length	Handle
TGB-1W	1"	1-1/2"	Wood
TGB-1-1/2W	1-1/2"	1-1/2"	Wood
TGB-2W	2"	1-1/2"	Wood
TGB-3W	3"	1-1/2"	Wood
TGB-4W	4"	1-1/2"	Wood

- Maple Wood Handle
- Bristles: 100% Polyester
- Flat Sash
- Tinplate Ferrule



Item Number	Width	Length	Handle
TGB-06-150	1-1/2"	"	Wood
TGB-06-200	2"	2-3/16"	Wood
TGB-06-300	3"	3-3/16"	Wood
TGB-06-400	4"	3-11/16"	Wood

- Maple Wood Handle
- Bristles: 100% Polyester
- Angular Sash
- Tinplate Ferrule



Item Number	Width	Length	Handle
TGB-07-200	2"	2-5/8"	Wood
TGB-07-300	3"	3-5/8"	Wood

- Unfinished Wood Handle
- High Density Foam



Item Number	Width	Length	Handle
TGB-01-FOAM	1"	2-5/8"	Wood
TGB-01-FOAM	2"	2-5/8"	Wood

## PAINT ROLLER SLEEVES



Item Number	Width	Pile	Pile (mm)
TGB-30-010	9-1/2"	3/8"	10
TGB-30-019	9-1/2"	3/4"	19
TGB-30-025	9-1/2"	1"	25
TGB-30-030	9-1/2"	1-1/8"	30



## CARBIDE BURRS

- Double Cut



Item Number	Shape	Head Diameter	Flute Length
SA-1-IDI	Cylindrical	1/4"	5/8"
SA-2-IDI	Cylindrical	5/16"	3/4"
SA-3-IDI	Cylindrical	3/8"	3/4"
SA-4-IDI	Cylindrical	7/16"	1"
SA-5-IDI	Cylindrical	1/2"	1"
SA-6-IDI	Cylindrical	5/8"	1"
SA-7-IDI	Cylindrical	3/4"	1"
SA-9-IDI	Cylindrical	1"	1"
SA-14-IDI	Cylindrical	3/16"	5/8"
SA-41-IDI	Cylindrical	1/16"	1/4"
SA-43-IDI	Cylindrical	1/8"	9/16"
SA-53-IDI	Cylindrical	3/16"	1/2"
SB-1-IDI	Cylindrical - End Cut	1/4"	5/8"
SB-3-IDI	Cylindrical - End Cut	3/8"	3/4"
SB-5-IDI	Cylindrical - End Cut	1/2"	1"
SB-11-IDI	Cylindrical - End Cut	1/8"	1"
SC-1-IDI	Cylindrical - Radius Cut	1/4"	5/8"
SC-2-IDI	Cylindrical - Radius Cut	5/16"	3/4"
SC-3-IDI	Cylindrical - Radius Cut	3/8"	3/4"
SC-4-IDI	Cylindrical - Radius Cut	7/16"	1"
SC-5-IDI	Cylindrical - Radius Cut	1/2"	1"
SC-6-IDI	Cylindrical - Radius Cut	5/8"	1"
SC-41-IDI	Cylindrical - Radius Cut	3/32"	7/16"

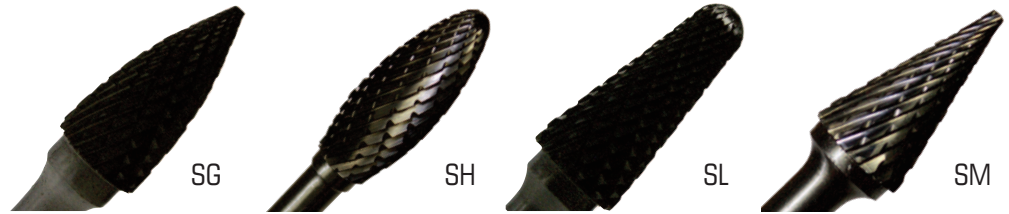
Item Number	Shape	Head Diameter	Flute Length
SC-42-IDI	Cylindrical - Radius Cut	1/8"	9/16"
SC-51-IDI	Cylindrical - Radius Cut	1/4"	1/2"
SD-1-IDI-BUR	Ball	1/4"	3/16"
SD-2-IDI	Ball	5/16"	1/4"
SD-3-IDI	Ball	3/8"	5/16"
SD-5-IDI	Ball	1/2"	7/16"
SD-6-IDI	Ball	5/8"	9/16"
SD-7-IDI	Ball	3/4"	11/16"
SD-14-IDI	Ball	3/16"	1/8"
SD-41-IDI	Ball	3/32"	3/32"
SD-42-IDI	Ball	1/8"	1/8"
SD-51-IDI	Ball	1/4"	1/4"
SE-1-IDI	Oval	1/4"	3/8"
SE-3-IDI	Oval	3/8"	5/8"
SE-5-IDI	Oval	1/2"	7/8"
SE-6-IDI	Oval	5/8"	1"
SE-51-IDI	Oval	1/4"	3/8"
SF-1-IDI-BUR	Tree - Radius End	1/4"	5/8"
SF-3-IDI	Tree - Radius End	3/8"	3/4"
SF-5-IDI	Tree - Radius End	1/2"	1"
SF-6-IDI	Tree - Radius End	5/8"	1"
SF-7-IDI	Tree - Radius End	3/4"	1"
SF-42-IDI	Tree - Radius End	1/8"	1/2"





## CARBIDE BURRS

- Double Cut



Item Number	Shape	Head Diameter	Flute Length
SG-1-IDI	Tree - Pointed End	1/4"	5/8"
SG-2-IDI	Tree - Pointed End	5/16"	3/4"
SG-3-IDI	Tree - Pointed End	3/8"	3/4"
SG-5-IDI	Tree - Pointed End	1/2"	1"
SG-6-IDI	Tree - Pointed End	5/8"	1"
SG-13-IDI	Tree - Pointed End	1/2"	3/4"
SH-1-IDI	Flame	1/4"	5/8"
SH-5-IDI	Flame	1/2"	1-1/4"
SH-6-IDI	Flame	5/8"	1-7/16"
SH-41-IDI	Flame	1/8"	1/4"
SL-1-IDI	Taper - Radius Cut	1/4"	5/8"

Item Number	Shape	Head Diameter	Flute Length
SL-2-IDI	Taper - Radius Cut	5/16"	7/8"
SL-3-IDI	Taper - Radius Cut	3/8"	1-1/16"
SL-4-IDI	Taper - Radius Cut	1/2"	1-1/8"
SL-41-IDI	Taper - Radius Cut	1/8"	3/8"
SL-53-IDI	Taper - Radius Cut	3/16"	1/2"
SM-1-IDI	Cone - Pointed End	1/4"	1/2"
SM-3-IDI	Cone - Pointed End	1/4"	1"
SM-4-IDI	Cone - Pointed End	3/8"	5/8"
SM-5-IDI	Cone - Pointed End	1/2"	7/8"
SM-6-IDI	Cone - Pointed End	5/8"	1"
SM-41-IDI	Cone - Pointed End	1/8"	11/32"

## 8 PIECE CARBIDE BURR SET

- Double Cut
- Wooden Box



Item Number	Description
TGBS-6	Double cut carbide burrs included in set; SA5, SC3, SC5, SD5, SF3, SF5, SG3, SL4

## STEP DRILLS

- Material: M2
- TIN Coated
- Triple Flat Shank



Item Number	Range	Steps	Increments
TGDB-10231	1/8" - 1/2"	13	1/32"
TGDB-10232	3/16" - 1/2"	6	1/16"
TGDB-10233	1/4" - 3/4"	9	1/16"
TGDB-10234	3/16" - 7/8"	12	1/16"
TGDB-10235	1/4" - 1-3/8"	10	1/8"



## DRILL BIT SETS

- 29 Piece Set
- Two Tone Finish (Black/Gold)
- Jobber Drills
- Metal Case
- 135° Split Point
- M2 High Speed Steel DIN338
- Size Range: 1/16" to 1/2"



Item Number	Head Diameter
TGDB-04-29-S	29 Piece Jobber Drill Bit Set Two Tone (Black/Gold) Finish Size Range: 1/16" to 1/2" (by 1/16" sizes)

- 29 Piece Set
- Black Oxide Finish
- Jobber Drills
- Metal Case
- 135° Split Point
- M2 High Speed Steel DIN338
- Size Range: 1/16" to 1/2"



Item Number	Head Diameter
TGDB-02-29-S	29 Piece Jobber Drill Bit Set Black Oxide Finish Size Range: 1/16" to 1/2" (by 1/16" sizes)

## DRILL BIT CABINET

- 29 Cabinets
- Labelled with Fractional Sizes
- Plexiglass Doors (front & rear)
- Lockable



Item Number	Head Diameter
TGDB-02-29-S	Drill Bit Cabinet for 29 Fractional Sizes

## PRENTICE DRILL BITS

- 8 Piece Set, Prentice Drills
- Black Oxide Finish
- Metal Case
- 135° Split Point
- M2 High Speed Steel DIN338
- 1/2" Shank
- Triple Flat Shank



Item Number	Head Diameter
TGDB-09-08-S	8 Piece Prentice Drill Bit Set Includes: Sizes Included: 9/16", 5/8", 11/16", 3/4", 13/16", 7/8", 15/16", 1"

- Black Oxide Finish
- Prentice Drills
- 135° Split Point
- M2 High Speed Steel DIN338
- 1/2" Shank
- Triple Flat Shank
- 5-7/8" Overall Length



Item Number	Diameter	Flute Length
TGDB-09-0563	9/16"	3-1/8"
TGDB-09-0625	5/8"	3-1/8"
TGDB-09-0688	11/16"	3-1/8"
TGDB-09-0750	3/4"	3-1/8"
TGDB-09-0813	13/16"	3-1/8"
TGDB-09-0875	7/8"	3-1/8"
TGDB-09-0938	15/16"	3-1/8"
TGDB-09-1000	1"	3-1/8"



## DRILL BITS

- Jobber Drills, Fractional Sizes
- 135° Split Point
- M2 High Speed Steel DIN338

Two Tone Finish, Triple Flat Shank			
Item Number	Size	Flute Length	Overall Length
TGDB-04-0015	1/64"	3/16"	13/16"
TGDB-04-0031	1/32"	3/8"	1-3/16"
TGDB-04-0046	3/64"	5/8"	1-1/2"
TGDB-04-0063	1/16"	13/16"	1-11/16"
TGDB-04-0078	5/64"	15/16"	1-15/16"
TGDB-04-0094	3/32"	1-3/16"	2-1/4"
TGDB-04-0109	7/64"	1-5/16"	2-3/8"
TGDB-04-0125	1/8"	1-7/16"	2-9/16"
TGDB-04-0140	9/64"	1-9/16"	2-3/4"
TGDB-04-0156	5/32"	1-11/16"	2-15/16"
TGDB-04-0171	11/64"	1-7/8"	3-1/8"
TGDB-04-0187	3/16"	2-1/16"	3-3/8"
TGDB-04-0203	13/64"	2-1/16"	3-3/8"
TGDB-04-0218	7/32"	2-1/4"	3-11/16"
TGDB-04-0234	15/64"	2-1/4"	3-11/16"
TGDB-04-0250	1/4"	2-1/2"	4"
TGDB-04-0267	17/64"	2-11/16"	4-5/16"
TGDB-04-0281	9/32"	2-11/16"	4-5/16"
TGDB-04-0297	19/64"	2-15/16"	4-5/8"
TGDB-04-0313	5/16"	2-15/16"	4-5/8"
TGDB-04-0328	21/64"	2-15/16"	4-5/8"
TGDB-04-0344	11/32"	3-3/16"	4-15/16"
TGDB-04-0359	23/64"	3-3/16"	4-15/16"
TGDB-04-0375	3/8"	3-7/16"	5-1/4"
TGDB-04-0390	25/64"	3-7/16"	5-1/4"
TGDB-04-0406	13/32"	3-7/16"	5-1/4"
TGDB-04-0422	27/64"	3-11/16"	5-9/16"
TGDB-04-0438	7/16"	3-11/16"	5-9/16"
TGDB-04-0453	29/64"	3-11/16"	5-9/16"
TGDB-04-0469	15/32"	4"	5-15/16"
TGDB-04-0484	31/64"	4"	5-15/16"
TGDB-04-0500	1/2"	4"	5-15/16"

Black Oxide Finish, Round Shank			
Item Number	Size	Flute Length	Overall Length
TGDB-02-0015	1/64"	3/16"	13/16"
TGDB-02-0031	1/32"	3/8"	1-3/16"
TGDB-02-0046	3/64"	5/8"	1-1/2"
TGDB-02-0063	1/16"	13/16"	1-11/16"
TGDB-02-0078	5/64"	15/16"	1-15/16"
TGDB-02-0094	3/32"	1-3/16"	2-1/4"
TGDB-02-0109	7/64"	1-5/16"	2-3/8"
TGDB-02-0125	1/8"	1-7/16"	2-9/16"
TGDB-02-0140	9/64"	1-9/16"	2-3/4"
TGDB-02-0156	5/32"	1-11/16"	2-15/16"
TGDB-02-0171	11/64"	1-7/8"	3-1/8"
TGDB-02-0187	3/16"	2-1/16"	3-3/8"
TGDB-02-0203	13/64"	2-1/16"	3-3/8"
TGDB-02-0218	7/32"	2-1/4"	3-11/16"
TGDB-02-0234	15/64"	2-1/4"	3-11/16"
TGDB-02-0250	1/4"	2-1/2"	4"
TGDB-02-0267	17/64"	2-11/16"	4-5/16"
TGDB-02-0281	9/32"	2-11/16"	4-5/16"
TGDB-02-0297	19/64"	2-15/16"	4-5/8"
TGDB-02-0313	5/16"	2-15/16"	4-5/8"
TGDB-02-0328	21/64"	2-15/16"	4-5/8"
TGDB-02-0344	11/32"	3-3/16"	4-15/16"
TGDB-02-0359	23/64"	3-3/16"	4-15/16"
TGDB-02-0375	3/8"	3-7/16"	5-1/4"
TGDB-02-0390	25/64"	3-7/16"	5-1/4"
TGDB-02-0406	13/32"	3-7/16"	5-1/4"
TGDB-02-0422	27/64"	3-11/16"	5-9/16"
TGDB-02-0438	7/16"	3-11/16"	5-9/16"
TGDB-02-0453	29/64"	3-11/16"	5-9/16"
TGDB-02-0469	15/32"	4"	5-15/16"
TGDB-02-0484	31/64"	4"	5-15/16"
TGDB-02-0500	1/2"	4"	5-15/16"



## DRILL BITS

- Jobber Drills, Number Sizes
- Two Tone Finish (Black/Gold)
- 135° Split Point
- M2 High Speed Steel DIN338
- Triple Flat Shank

Item Number	Size	Flute Length	Overall Length
TGDB-06-001	1	2-5/8"	3-7/8"
TGDB-06-002	2	2-5/8"	3-7/8"
TGDB-06-003	3	2-1/2"	3-3/4"
TGDB-06-004	4	2-1/2"	3-3/4"
TGDB-06-005	5	2-1/2"	3-3/4"
TGDB-06-006	6	2-1/2"	3-3/4"
TGDB-06-007	7	2-7/16"	3-5/8"
TGDB-06-008	8	2-7/16"	3-5/8"
TGDB-06-009	9	2-7/16"	3-5/8"
TGDB-06-010	10	2-7/16"	3-5/8"
TGDB-06-011	11	2-5/16"	3-1/2"
TGDB-06-012	12	2-5/16"	3-1/2"
TGDB-06-013	13	2-5/16"	3-1/2"
TGDB-06-014	14	2-3/16"	3-3/8"
TGDB-06-015	15	2-3/16"	3-3/8"
TGDB-06-016	16	2-3/16"	3-3/8"
TGDB-06-017	17	2-3/16"	3-3/8"
TGDB-06-018	18	2-1/8"	3-1/4"
TGDB-06-019	19	2-1/8"	3-1/4"
TGDB-06-020	20	2-1/8"	3-1/4"
TGDB-06-021	21	2-1/8"	3-1/4"
TGDB-06-022	22	2"	3-1/8"
TGDB-06-023	23	2"	3-1/8"
TGDB-06-024	24	2"	3-1/8"
TGDB-06-025	25	1-7/8"	3"
TGDB-06-026	26	1-7/8"	3"
TGDB-06-027	27	1-7/8"	3"
TGDB-06-028	28	1-3/4"	2-7/8"
TGDB-06-029	29	1-3/4"	2-7/8"
TGDB-06-030	30	1-5/8"	2-3/4"

Item Number	Size	Flute Length	Overall Length
TGDB-06-031	31	1-5/8"	2-3/4"
TGDB-06-032	32	1-5/8"	2-3/4"
TGDB-06-033	33	1-1/2"	2-5/8"
TGDB-06-034	34	1-1/2"	2-5/8"
TGDB-06-035	35	1-1/2"	2-5/8"
TGDB-06-036	36	1-7/16"	2-1/2"
TGDB-06-037	37	1-7/16"	2-1/2"
TGDB-06-038	38	1-7/16"	2-1/2"
TGDB-06-039	39	1-3/8"	2-3/8"
TGDB-06-040	40	1-3/8"	2-3/8"
TGDB-06-041	41	1-3/8"	2-3/8"
TGDB-06-042	42	1-1/4"	2-1/4"
TGDB-06-043	43	1-1/4"	2-1/4"
TGDB-06-044	44	1-1/8"	2-1/8"
TGDB-06-045	45	1-1/8"	2-1/8"
TGDB-06-046	46	1-1/8"	2-1/8"
TGDB-06-047	47	1"	2"
TGDB-06-048	48	1"	2"
TGDB-06-049	49	1"	2"
TGDB-06-050	50	1"	2"
TGDB-06-051	51	1"	2"
TGDB-06-052	52	7/8"	1-7/8"
TGDB-06-053	53	7/8"	1-7/8"
TGDB-06-054	54	7/8"	1-7/8"
TGDB-06-055	55	7/8"	1-7/8"
TGDB-06-056	56	3/4"	1-3/4"
TGDB-06-057	57	3/4"	1-3/4"
TGDB-06-058	58	11/16"	1-5/8"
TGDB-06-059	59	11/16"	1-5/8"
TGDB-06-060	60	11/16"	1-5/8"



## DRILL BITS

- Jobber Drills, Letter Sizes
- Two Tone Finish (Black/Gold)
- 135° Split Point
- M2 High Speed Steel DIN338
- Triple Flat Shank

Item Number	Size	Flute Length	Overall Length
TGDB-05-A	A	2-5/8"	3-7/8"
TGDB-05-B	B	2-3/4"	4"
TGDB-05-C	C	2-3/4"	4"
TGDB-05-D	D	2-3/4"	4"
TGDB-05-E	E	2-3/4"	4"
TGDB-05-F	F	2-7/8"	4-1/8"
TGDB-05-G	G	2-7/8"	4-1/8"
TGDB-05-H	H	2-7/8"	4-1/8"
TGDB-05-I	I	2-7/8"	4-1/8"
TGDB-05-J	J	2-7/8"	4-1/8"
TGDB-05-K	K	2-15/16"	4-1/4"
TGDB-05-L	L	2-15/16"	4-1/4"
TGDB-05-M	M	3-1/16"	4-3/8"
TGDB-05-N	N	3-1/16"	4-3/8"
TGDB-05-O	O	3-3/16"	4-1/2"
TGDB-05-P	P	3-5/16"	4-5/8"
TGDB-05-Q	Q	3-7/16"	4-3/4"
TGDB-05-R	R	3-7/16"	4-3/4"
TGDB-05-S	S	3-1/2"	4-7/8"
TGDB-05-T	T	3-1/2"	4-7/8"
TGDB-05-U	U	3-5/8"	5"
TGDB-05-V	V	3-5/8"	5"
TGDB-05-W	W	3-3/4"	5-1/8"
TGDB-05-X	X	3-3/4"	5-1/8"
TGDB-05-Y	Y	3-7/8"	5-1/4"
TGDB-05-Z	Z	3-7/8"	5-1/4"

- Stubb Drill Bits, Fractional Sizes
- Black Oxide Finish
- 135° Split Point
- M2 High Speed Steel DIN338
- Triple Flat Shank

Item Number	Size	Flute Length	Overall Length
TGDB-01-0015	1/64"	3/16"	5/8"
TGDB-01-0031	1/32"	1/4"	7/8"
TGDB-01-0046	3/64"	5/16"	1-3/16"
TGDB-01-0063	1/16"	3/8"	1-5/16"
TGDB-01-0078	5/64"	1/2"	1-1/2"
TGDB-01-0094	3/32"	9/16"	1-11/16"
TGDB-01-0109	7/64"	5/8"	1-13/16"
TGDB-01-0125	1/8"	11/16"	1-15/16"
TGDB-01-0140	9/64"	13/16"	2-1/16"
TGDB-01-0156	5/32"	7/8"	2-3/16"
TGDB-01-0171	11/64"	15/16"	2-5/16"
TGDB-01-0187	3/16"	1"	2-7/16"
TGDB-01-0203	13/64"	1"	2-7/16"
TGDB-01-0218	7/32"	1-1/8"	2-5/8"
TGDB-01-0234	15/64"	1-1/8"	2-5/8"
TGDB-01-0250	1/4"	1-1/4"	2-3/4"
TGDB-01-0267	17/64"	1-5/16"	2-15/16"
TGDB-01-0281	9/32"	1-5/16"	2-15/16"
TGDB-01-0297	19/64"	1-7/16"	3-1/8"
TGDB-01-0313	5/16"	1-7/16"	3-1/8"
TGDB-01-0328	21/64"	1-7/16"	3-1/8"
TGDB-01-0344	11/32"	1-9/16"	3-5/16"
TGDB-01-0359	23/64"	1-9/16"	3-5/16"
TGDB-01-0375	3/8"	1-11/16"	3-1/2"
TGDB-01-0390	25/64"	1-11/16"	3-1/2"
TGDB-01-0406	13/32"	1-11/16"	3-1/2"
TGDB-01-0422	27/64"	1-7/8"	3-3/4"
TGDB-01-0438	7/16"	1-7/8"	3-3/4"
TGDB-01-0453	29/64"	1-7/8"	3-3/4"
TGDB-01-0469	15/32"	2"	4"
TGDB-01-0484	31/64"	2"	4"
TGDB-01-0500	1/2"	2"	4"

# Index

<b>Air Hose</b>	EPDM . . . . .	14	<b>Drill Bits</b>	Number . . . . .	42
	Self-Storing . . . . .	13		Prentice . . . . .	40
<b>Aviation Snips</b>	. . . . .	10		Set	
<b>Bar</b>	Pry . . . . .	11		Black Oxide . . . . .	40
	Utility . . . . .	11		Prentice . . . . .	40
	Wrecking . . . . .	11		Two Tone . . . . .	40
<b>Barricade Tape</b>	. . . . .	26		Stubb	
<b>Bolt Cutters</b>	. . . . .	10		Fractional . . . . .	43
<b>Brass Ball Valves</b>	Threaded . . . . .	13	<b>Extension Cord</b>	Arctic Blue . . . . .	17
	Locking Handle . . . . .	13		Bulldog Tough . . . . .	18
	Potable . . . . .	13		Neon Flex . . . . .	17
<b>Bulb</b>	Halogen . . . . .	19		Outdoor . . . . .	18
<b>C-Clamps</b>	. . . . .	10		. . . . .	26
<b>Cable Ties</b>	. . . . .	20-21	<b>Flagging Tape</b>	. . . . .	26
<b>Caliper</b>	Digital		<b>Flap Wheels</b>	Mounted . . . . .	23-24
	Plastic . . . . .	12	<b>Flashlights</b>	LED	
	Stainless . . . . .	12		Aluminum . . . . .	22
<b>Carbide Burrs</b>	Double Cut			Plastic . . . . .	22
	Ball . . . . .	38	<b>Gloves</b>	Coated	
	Cone - Pointed End . . . . .	39		Kevlar . . . . .	28
	Cylindrical . . . . .	38		Nylon . . . . .	29
	Cylindrical, End Cut . . . . .	38		Poly-Cotton . . . . .	28
	Cylindrical, Ball End . . . . .	38		Polyester . . . . .	29
	Flame . . . . .	39	<b>Gloves</b>	Cotton . . . . .	32
	Oval . . . . .	38		Disposable	
	Taper - Radius . . . . .	39		Nitrile . . . . .	28
	Tree - Pointed . . . . .	39		Leather	
	Tree - Radius End . . . . .	38		Drivers . . . . .	30-31
	Set . . . . .	39		Fitters . . . . .	30-32
<b>Casters</b>	Blue Elastic Rubber . . . . .	33		Mechanics . . . . .	29
	Orange Polyurethane . . . . .	33		Welders . . . . .	32
	Phenolic . . . . .	33		String Knit . . . . .	32
<b>Chemicals</b>	Aerosol		<b>Grease Gun</b>	Lever Handle . . . . .	15
	Chain Lube . . . . .	36	<b>Hacksaw</b>	Blades . . . . .	10
	Food Grade Sil. . . . .	36	<b>Hand Cleaner</b>	Orange Pumice . . . . .	36
	Moly Grease . . . . .	36	<b>Hand Truck</b>	Convertible . . . . .	34
	Mould & Die Clnr . . . . .	36		Dual Handle . . . . .	34
	Multi Purpose . . . . .	36		Loop "P" Handle . . . . .	34
	Odourless Silicone . . . . .	36	<b>Hex Keys</b>	Ball-End . . . . .	6
	Silicone Lube . . . . .	36		Standard . . . . .	6
<b>Chisel</b>	Open Stock . . . . .	11	<b>Hole Saw</b>	Kit . . . . .	11
	Set . . . . .	11	<b>Hooks</b>	Grab . . . . .	35
<b>Coveralls</b>	Disposable			Slip . . . . .	35
	50 GSM . . . . .	27	<b>Hose Clamps</b>	201 Stainless . . . . .	14
	60 GSM . . . . .	27		301 Stainless . . . . .	14
<b>Cut-Off Wheels</b>	Type 1 . . . . .	22	<b>Level</b>	Heavy Duty . . . . .	8
<b>Delineator Post</b>	. . . . .	26		Laser . . . . .	8
<b>Dial Indicator</b>	. . . . .	12		Standard . . . . .	8
<b>Drill Bits</b>	Cabinet . . . . .	40		Torpedo . . . . .	8
	Jobber		<b>Link Chain</b>	Grade 30 . . . . .	35
	Fractional . . . . .	41		Grade 70 . . . . .	35
	Letter . . . . .	43	<b>Magnetic Stand</b>	. . . . .	12
			<b>Magnetic Pick-up</b>	. . . . .	5

<b>Micrometer</b>	Outside . . . . .	12	<b>Tape</b>	Electrical . . . . .	36
<b>Paint Brush</b>	Chip . . . . .	37		Teflon . . . . .	36
	Foam . . . . .	37	<b>Tape Measure</b>	Magnetic . . . . .	9
	Maple Handle . . . . .	37	<b>Tape Measure</b>	Non Magnetic . . . . .	9
	Plastic Handle . . . . .	37	<b>Tarps</b>	Heavy Duty . . . . .	16
<b>Paint Roller</b>	Refill . . . . .	37		Regular Duty	
<b>Plier</b>	Bent Nose . . . . .	5		Blue . . . . .	16
	Diagonal Cutters . . . . .	5		White . . . . .	16
	Linesman's . . . . .	5	<b>Traffic Cone</b>	18" . . . . .	26
	Locking Jaw, Curved . . . . .	5		28" . . . . .	26
	Long Nose . . . . .	5	<b>Utility Knife</b>	Blades . . . . .	9
	Slip Joint . . . . .	4		Heavy-Duty . . . . .	9
	Tongue & Groove . . . . .	4		Standard . . . . .	7
<b>Pneumatic Tool</b>	Die Grinder		<b>Vest</b>	Harness . . . . .	25
	45 Angle . . . . .	12		Safety . . . . .	25
	Mini . . . . .	12	<b>Vise</b>	Mechanics	
	Standard . . . . .	12		Tuff Grade . . . . .	15
<b>Punch</b>	Set . . . . .	10		Record . . . . .	15
<b>Rainwear</b>	Fire-Retardent . . . . .	27		Parts . . . . .	15
	Standard . . . . .	27	<b>Web Slings</b>	. . . . .	22
<b>Ratchet Straps</b>			<b>Winter Clothing</b>	Balaclava . . . . .	27
	Double-J Hook . . . . .	21		Headband . . . . .	27
	Flat Hook . . . . .	21	<b>Wipes</b>	Industrial . . . . .	16
<b>Rope</b>	Polyester		<b>Work Light</b>	. . . . .	19
	3 Strand . . . . .	22		Halogen	
<b>Screwdriver</b>	Phillips . . . . .	6		Portable . . . . .	19
	Robertson . . . . .	6		Tri-Pod . . . . .	19
	Slot . . . . .	6	<b>Wrench</b>	String . . . . .	19
<b>Socket Set</b>	Deep Impact			Adjustable	
	1/2 Drive . . . . .	4		Cushion Grip . . . . .	7
	3/4 Drive . . . . .	4		Metal . . . . .	7
	Standard			Combination	
	1/2 Drive . . . . .	3		Metric . . . . .	2
	3/4 Drive . . . . .	3		SAE . . . . .	1
	3/8 Drive . . . . .	3		Pipe	
<b>Step</b>	Drill . . . . .	39		Aluminum . . . . .	7
<b>Tape</b>	Dispenser . . . . .	36		Cast Iron . . . . .	7

**WARRANTY** - All Tuff Grade branded products are guaranteed against defects in workmanship and materials. All hand tools and air tools have a life time replacement warranty on defective products when the tool is used for the purpose for which it was designed. Any Tuff Grade product that fails within the specified warranty period will be repaired or replaced, at the distributors discretion, at no charge to the end-user. All warranties are void if there is evidence of misuse, abuse or alteration of the product in any way. Incidental or consequential damages are excluded from this warranty.

**WARRANTY PROCEDURE** - Tuff Grade products being submitted for a warranty claim should be returned to place of purchase with proof of purchase and an explanation of the defect.



**TUFF**<sup>TM</sup>  
GRADE

