



Toll Free 800-323-0966

P.O. Box 115
Alpena, MI 49707-0115
www.pcimfg.com
e-mail: sales@pcimfg.com
or drawings@pcimfg.com



Non-Metallic Track Rollers

Features

- Economical corrosion resistant alternative to stainless steel
- Eliminates noise by elimination of metal-to-metal contact
- Improved design providing added contamination exclusion

Potential Markets

- Food processing
- Plastic handling
- Laboratory testing equipment
- Medical
- Marine

Extreme Duty Solutions

- Food grade lubricant
- Regreasable provisions
- Stainless steel components
- Multiple color options
- Custom body profiles

316 Stainless Steel Track Rollers

Features

- 316 Stainless Steel construction for ultimate corrosion resistance
- Fluorocarbon seals for chemical resistance

Potential Markets

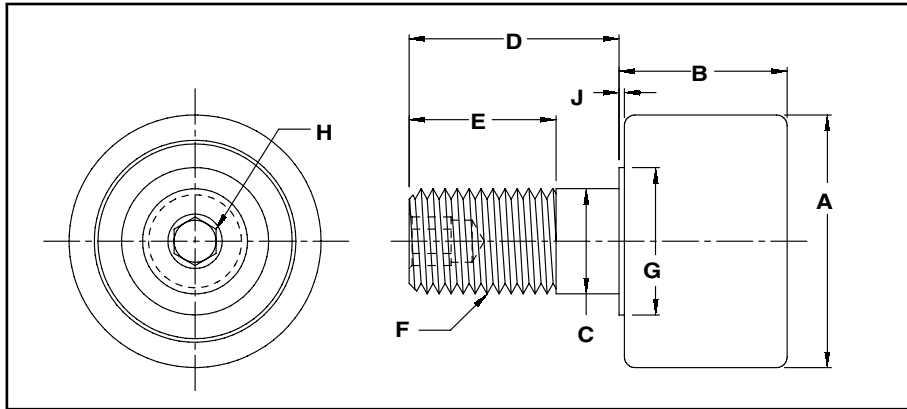
- Food processing
- Petrochemical
- Construction
- Wastewater
- Medical
- Marine
- Chemical

Extreme Duty Solutions

- Food grade lubricant
- Regreasable provisions
- Custom body profiles



PCI "NPTR" Series - Non-Metallic Track Roller Stud Type Plain



Plain Track Rollers effectively carry radial loads. For heavy side loads, they can also be positioned to act as side guides.

Jam Nuts and Lock Washers Available.

PCI Non-Metallic Part Number	A Roller Dia.	B Roller Width	C Stud Dia. +.000/- .001	D Stud Length	E Thread Length	F Fine Thread	G Shoulder Dia.	H Hex Size	J Shoulder Length
NPTR-1.00	1.000	.781	.437	1.000	.500	7/16-20	.500	3/16	.031
NPTR-1.125	1.125	.781	.437	1.000	.500	7/16-20	.500	3/16	.031
NPTR-1.25	1.250	.844	.500	1.250	.625	1/2-20	.625	3/16	.031
NPTR-1.375	1.375	.844	.500	1.250	.625	1/2-20	.625	3/16	.031
NPTR-1.50	1.500	1.187	.625	1.500	.750	5/8-18	.750	5/16	.063
NPTR-1.75	1.750	1.187	.750	1.750	.875	3/4-16	.875	5/16	.063
NPTR-1.75-5	1.750	1.438	.500	1.125	.875	1/2-13	.625 (HEX)	N/A	.3125
NPTR-2.00	2.000	1.687	.875	2.000	1.125	7/8-14	1.000	5/16	.063
NPTR-2.25	2.250	1.687	.875	2.000	1.125	7/8-14	1.000	5/16	.063
NPTR-2.50	2.500	1.687	1.000	2.250	1.500	1-14	1.187	3/8	.063
NPTR-2.75	2.750	1.687	1.000	2.250	1.500	1-14	1.187	3/8	.063

PCI Non-Metallic Part Number	Sealed Ball Bearing Capacity (lbs)						Stud Capacity (lbs)				Stationary Tread Capacity (lbs)	Retaining Ring Load	Weight (lbs.)
	Radial Load			Thrust Load			Bending = .75Sy		Shear = .75 x .5Sy				
	3000 Hrs. L ₁₀ Life @ 100 RPM	500 Hrs. L ₁₀ Life @ 33 1/3 RPM	Static	3000 Hrs. L ₁₀ Life @ 100 RPM	500 Hrs. L ₁₀ Life @ 33 1/3 RPM	Static	Load @ Center of Roller	Load @ End of Roller	Load @ Mounting Rail				
NPTR-1.00	324	850	428	195	510	107	600	250	2,480	34	470	.11	
NPTR-1.125	324	850	428	195	510	107	600	250	2,480	38	470	.12	
NPTR-1.25	542	1,420	746	327	860	187	980	440	4,100	46	470	.18	
NPTR-1.375	542	1,420	746	327	860	187	980	440	4,100	50	470	.19	
NPTR-1.50	1,050	2,750	1,395	750	1,960	697	1,680	720	7,270	76	550	.35	
NPTR-1.75	1,050	2,750	1,395	750	1,960	697	1,680	720	7,270	89	550	.46	
NPTR-1.75-5	1,050	2,750	1,395	750	1,960	697	1,680	720	7,270	89	550	.21	
NPTR-2.00	1,460	3,820	2,140	2,830	1,070	1,460	4,670	1,645	14,600	146	900	.79	
NPTR-2.25	1,460	3,820	2,140	2,830	1,070	1,330	4,670	1,645	14,600	165	900	.8	
NPTR-2.50	2,120	5,560	3,500	1,645	4,310	1,750	10,110	4,490	31,600	183	1,340	1.59	
NPTR-2.75	2,120	5,560	3,500	1,645	4,310	1,750	10,110	4,490	31,600	201	1,340	1.9	

Note: Tread capacities are theoretical ratings based on a 4x safety factor at ambient temperature. These ratings are only meant as a guide in selecting a roller. For help in selecting a load bearing roller assembly for your application, call PCI today!

Features

- Economical corrosion resistant alternative to stainless steel
- Eliminates noise by elimination of metal-to-metal contact
- Improved design providing added contamination exclusion

Potential Markets

- Food processing
- Plastic handling
- Laboratory testing equipment
- Medical
- Marine

Extreme Duty Solutions *(For additional information and to explore all the choices for your solution, contact PCI)*

- Food grade lubricant
- Regreasable provisions
- Multiple color options
- Custom body profiles
- Stainless steel components

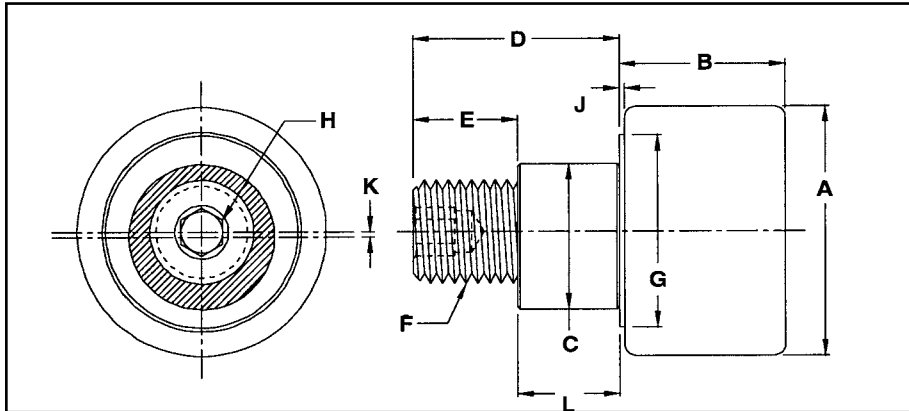
PRO CAL INC.

P.O. Box 115
Alpena, MI 49707-0115

Toll Free 800-323-0966

www.pcimfg.com
e-mail: sales@pcimfg.com or drawings@pcimfg.com

PCI "NPTRE" Series - Non-Metallic Track Roller - Stud Type Plain - Eccentric



Eccentric Track Rollers are used where precision alignment is necessary. The stud can be rotated before the roller is tightened into position, which overcomes locational tolerance and unequal loading of multiple rollers. It will also help with alignment in guiding applications.

Jam Nuts and Lock Washers Available.

PCI Non-Metallic Part Number	A Roller Dia.	B Roller Width	C Ecc. Dia. +.000/-001	D Stud Length	E Thread Length	F Fine Thread	G Shoulder Dia.	H Hex Size	J Shoulder Length	K Ecc. Offset	L Ecc. Length
NPTRE-1.00	1.000	.781	.625	1.000	.520	7/16-20	.730	3/16	.031	.030	.480
NPTRE-1.125	1.125	.781	.625	1.000	.520	7/16-20	.730	3/16	.031	.030	.480
NPTRE-1.25	1.250	.844	.687	1.250	.645	1/2-20	.812	3/16	.031	.030	.605
NPTRE-1.375	1.375	.844	.687	1.250	.645	1/2-20	.812	3/16	.031	.030	.605
NPTRE-1.50	1.500	1.187	.875	1.500	.770	5/8-18	1.125	5/16	.063	.030	.730
NPTRE-1.75	1.750	1.187	1.000	1.750	.895	3/4-16	1.250	5/16	.063	.030	.855
NPTRE-2.00	2.000	1.687	1.187	2.000	1.020	7/8-14	1.500	5/16	.063	.030	.980
NPTRE-2.25	2.250	1.687	1.187	2.000	1.020	7/8-14	1.500	5/16	.063	.030	.980
NPTRE-2.50	2.500	1.687	1.375	2.250	1.145	1-14	1.688	3/8	.063	.030	1.105
NPTRE-2.75	2.750	1.687	1.375	2.250	1.145	1-14	1.688	3/8	.063	.030	1.105

PCI Non-Metallic Part Number	Sealed Ball Bearing Capacity (lbs)						Stud Capacity (lbs)			Stationary Tread Capacity (lbs)	Retaining Ring Load	Weight (lbs.)
	Radial Load			Thrust Load			Bending = .75Sy		Load @ Mounting Rail			
	3000 Hrs. L ₁₀ Life @ 100 RPM	500 Hrs. L ₁₀ Life @ 33 1/3 RPM	Static	3000 Hrs. L ₁₀ Life @ 100 RPM	500 Hrs. L ₁₀ Life @ 33 1/3 RPM	Static	Load @ Center of Roller	Load @ End of Roller				
NPTRE-1.00	324	850	428	195	510	107	600	250	2,480	34	470	.11
NPTRE-1.125	324	850	428	195	510	107	600	250	2,480	38	470	.12
NPTRE-1.25	542	1,420	746	327	860	187	980	440	4,100	46	470	.18
NPTRE-1.375	542	1,420	746	327	860	187	980	440	4,100	50	470	.19
NPTRE-1.50	1,050	2,750	1,395	750	1,960	697	1,680	720	7,270	76	550	.35
NPTRE-1.75	1,050	2,750	1,395	750	1,960	697	1,680	720	7,270	89	550	.46
NPTRE-2.00	1,460	3,820	2,140	2,830	1,070	1,330	4,670	1,645	14,600	146	900	.79
NPTRE-2.25	1,460	3,820	2,140	2,830	1,070	1,330	4,670	1,645	14,600	165	900	.8
NPTRE-2.50	2,120	5,560	3,500	1,645	4,310	1,750	10,110	4,490	31,600	183	1,340	1.59
NPTRE-2.75	2,120	5,560	3,500	1,645	4,310	1,750	10,110	4,490	31,600	201	1,340	1.9

Features

- Economical corrosion resistant alternative to stainless steel
- Eliminates noise by elimination of metal-to-metal contact
- Improved design providing added contamination exclusion

Potential Markets

- Food processing
- Plastic handling
- Laboratory testing equipment
- Medical
- Marine

Extreme Duty Solutions (For additional information and to explore all the choices for your solution, contact PCI)

- Food grade lubricant
- Regreasable provisions
- Multiple color options
- Custom body profiles
- Stainless steel components

PRO CAL INC.

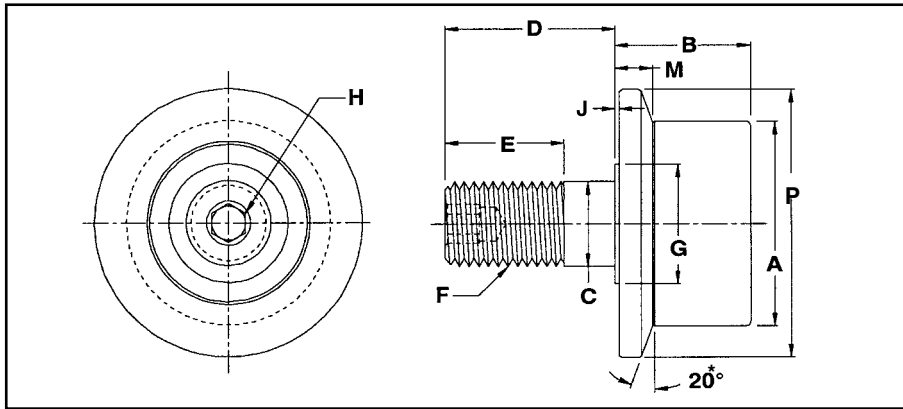
P.O. Box 115
Alpena, MI 49707-0115

Toll Free 800-323-0966

www.pcimfg.com
e-mail: sales@pcimfg.com or drawings@pcimfg.com

PCI "NFTR" Series - Non-Metallic Track Roller

Stud Type Flanged



Flanged Track Rollers are used where light side thrust loads exist. When used in this manner, the flange acts as a guide. Flanged Track Rollers are also used in combination with Plain Track Rollers.

Jam Nuts and Lock Washers Available.

PCI Non-Metallic Part Number	A Roller Dia.	B Roller Width	C Stud Dia. +.000/-0.001	D Stud Length	E Thread Length	F Fine Thread	G Shoulder Dia.	H Hex Size	J Shoulder Length	M Flange Width	P Flange Dia.
NFTR-1.00	1.000	.781	.437	1.000	.500	7/16-20	.500	3/16	.031	.219	1.375
NFTR-1.125	1.125	.781	.437	1.000	.500	7/16-20	.500	3/16	.031	.219	1.500
NFTR-1.25	1.250	.844	.500	1.250	.625	1/2-20	.625	3/16	.031	.219	1.563
NFTR-1.375	1.375	.844	.500	1.250	.625	1/2-20	.625	3/16	.031	.219	1.688
NFTR-1.50	1.500	1.187	.625	1.500	.750	5/8-18	.750	5/16	.063	.343	2.187
NFTR-1.50-2	1.500	1.063	.500	1.375	.750	1/2-20	.625	1/4	.063	.343	2.000
NFTR-1.75	1.750	1.187	.750	1.750	.875	3/4-16	.875	5/16	.063	.343	2.437
NFTR-2.00	2.000	1.687	.875	2.000	1.000	7/8-14	1.000	5/16	.063	.593	2.687
NFTR-2.00-9*	2.000	1.687	.875	2.000	1.000	7/8-14	1.000	5/16	.063	.593	2.667
NFTR-2.25	2.250	1.687	.875	2.000	1.000	7/8-14	1.000	5/16	.063	.593	2.937
NFTR-2.50	2.500	1.687	1.000	2.250	1.500	1-14	1.187	3/8	.063	.593	3.187
NFTR-2.75	2.750	1.687	1.000	2.250	1.500	1-14	1.187	3/8	.063	.593	3.437

PCI Non-Metallic Part Number	Sealed Ball Bearing Capacity (lbs)						Stud Capacity (lbs)			Stationary Tread Capacity (lbs)	Retaining Ring Load	Weight (lbs.)
	Radial Load			Thrust Load			Bending = .75Sy		Shear = .75 x .5Sy			
	3000 Hrs. L ₁₀ Life @ 100 RPM	500 Hrs. L ₁₀ Life @ 33 1/3 RPM	Static	3000 Hrs. L ₁₀ Life @ 100 RPM	500 Hrs. L ₁₀ Life @ 33 1/3 RPM	Static	Load @ Center of Roller	Load @ End of Roller	Load @ Mounting Rail			
NFTR-1.00	324	850	428	195	510	107	600	250	2,480	25	470	.12
NFTR-1.125	324	850	428	195	510	107	600	250	2,480	28	470	.13
NFTR-1.25	542	1,420	746	327	860	187	980	440	4,100	35	470	.19
NFTR-1.375	542	1,420	746	327	860	187	980	440	4,100	39	470	.23
NFTR-1.50	1,050	2,750	1,395	750	1,960	697	1,680	720	7,270	57	550	.37
NFTR-1.50-2	1,050	2,750	1,394	750	1,960	697	1,039	458	5,050	49	470	.24
NFTR-1.75	1,050	2,750	1,395	750	1,960	697	1,680	720	7,270	66	550	.53
NFTR-2.00	1,460	3,820	2,140	2,830	1,070	1,330	4,670	1,645	14,600	98	900	.96
NFTR-2.00-9*	1,460	3,820	2,140	2,830	1,070	1,330	4,670	1,645	14,600	98	900	1.06
NFTR-2.25	1,460	3,820	2,140	2,830	1,070	1,330	4,670	1,645	14,600	111	900	1.23
NFTR-2.50	2,120	5,560	3,500	1,645	4,310	1,750	10,110	4,490	31,600	123	1,340	1.8
NFTR-2.75	2,120	5,560	3,500	1,645	4,310	1,750	10,110	4,490	31,600	135	1,340	2.2

*NFTR-2.00-9 has a square flange instead of a 20° flange.

Features

- Economical corrosion resistant alternative to stainless steel
- Eliminates noise by elimination of metal-to-metal contact
- Improved design providing added contamination exclusion

Potential Markets

- Food processing
- Plastic handling
- Laboratory testing equipment
- Medical
- Marine

Extreme Duty Solutions *(For additional information and to explore all the choices for your solution, contact PCI)*

- Food grade lubricant
- Regreasable provisions
- Multiple color options
- Custom body profiles
- Stainless steel components

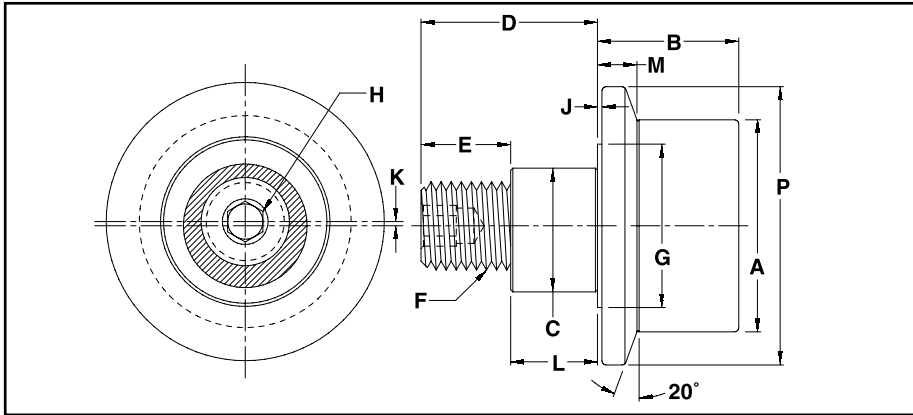
PRO CAL INC.

P.O. Box 115
Alpena, MI 49707-0115

Toll Free 800-323-0966

www.pcimfg.com
e-mail: sales@pcimfg.com or drawings@pcimfg.com

PCI "NFTRE" Series - Non-Metallic Track Roller⁷ Stud Type Flanged - Eccentric



Flanged Eccentric Track Rollers are used where precision alignment is necessary. The stud can be rotated before the roller is tightened into position, which overcomes locational tolerance and unequal loading of multiple rollers. It will also help with alignment in guiding applications.

Jam Nuts and Lock Washers Available.

PCI Non-Metallic Part Number	A Roller Dia.	B Roller Width	C Ecc. Dia. +.000/-001	D Stud Length	E Thread Length	F Fine Thread	G Shoulder Dia.	H Hex Size	L Ecc. Length	K Ecc. Offset	P Flange Dia.	M Flange Width	J Shoulder Length
NFTRE-1.00	1.000	.781	.625	1.000	.520	7/16-20	.730	3/16	.480	.030	1.375	.219	.031
NFTRE-1.125	1.125	.781	.625	1.000	.520	7/16-20	.730	3/16	.480	.030	1.500	.219	.031
NFTRE-1.25	1.250	.844	.687	1.250	.645	1/2-20	.812	3/16	.605	.030	1.563	.219	.031
NFTRE-1.375	1.375	.844	.687	1.250	.645	1/2-20	.812	3/16	.605	.030	1.688	.219	.031
NFTRE-1.50	1.500	1.187	.875	1.500	.770	5/8-18	1.125	5/16	.730	.030	2.187	.343	.031
NFTRE-1.75	1.750	1.187	1.000	1.750	.895	3/4-16	1.250	5/16	.855	.030	2.437	.343	.063
NFTRE-2.00	2.000	1.687	1.187	2.000	1.020	7/8-14	1.500	5/16	.980	.030	2.687	.593	.063
NFTRE-2.25	2.250	1.687	1.187	2.000	1.020	7/8-14	1.500	5/16	.980	.030	2.937	.593	.063
NFTRE-2.50	2.500	1.687	1.375	2.250	1.145	1-14	1.688	3/8	1.105	.030	3.187	.593	.063
NFTRE-2.75	2.750	1.687	1.375	2.250	1.145	1-14	1.688	3/8	1.105	.030	3.437	.593	.063

PCI Non-Metallic Part Number	Sealed Ball Bearing Capacity (lbs)						Stud Capacity (lbs)				Stationary Tread Capacity (lbs)	Retaining Ring Load	Weight (lbs.)
	Radial Load			Thrust Load			Bending = .75Sy		Load @ Mounting Rail				
	3000 Hrs. L ₁₀ Life @ 100 RPM	500 Hrs. L ₁₀ Life @ 33 1/3 RPM	Static	3000 Hrs. L ₁₀ Life @ 100 RPM	500 Hrs. L ₁₀ Life @ 33 1/3 RPM	Static	Load @ Center of Roller	Load @ End of Roller		Shear = .75 x .5Sy			
NFTRE-1.00	324	850	428	195	510	107	600	250	2,480	25	470	.15	
NFTRE-1.125	324	850	428	195	510	107	600	250	2,480	28	470	.16	
NFTRE-1.25	542	1,420	746	327	860	187	980	440	4,100	35	470	.22	
NFTRE-1.375	542	1,420	746	327	860	187	980	440	4,100	39	470	.26	
NFTRE-1.50	1,050	2,750	1,395	750	1,960	697	1,680	720	7,270	57	550	.49	
NFTRE-1.75	1,050	2,750	1,395	750	1,960	697	1,680	720	7,270	66	550	.63	
NFTRE-2.00	1,460	3,820	2,140	2,830	1,070	1,330	4,670	1,645	14,600	98	900	1.26	
NFTRE-2.25	1,460	3,820	2,140	2,830	1,070	1,330	4,670	1,645	14,600	111	900	1.63	
NFTRE-2.50	2,120	5,560	3,500	1,645	4,310	1,750	10,110	4,490	31,600	123	1,340	2.0	
NFTRE-2.75	2,120	5,560	3,500	1,645	4,310	1,750	10,110	4,490	31,600	135	1,340	2.5	

Features

- Economical corrosion resistant alternative to stainless steel
- Eliminates noise by elimination of metal-to-metal contact
- Improved design providing added contamination exclusion

Extreme Duty Solutions *(For additional information and to explore all the choices for your solution, contact PCI)*

- Food grade lubricant
- Regreasable provisions
- Multiple color options

Potential Markets

- Food processing
- Plastic handling
- Laboratory testing equipment
- Medical
- Marine

- Custom body profiles
- Stainless steel components

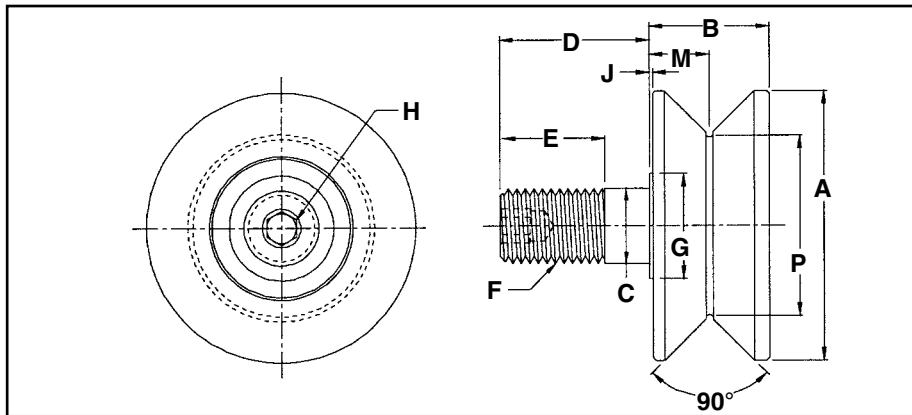
PRO CAL INC.

P.O. Box 115
Alpena, MI 49707-0115

Toll Free 800-323-0966

www.pcimfg.com
e-mail: sales@pcimfg.com or drawings@pcimfg.com

PCI "NVTR" Series - Non-Metallic Track Roller Stud Type V-Grooved



V-Grooved Track Rollers are designed to operate on "V" bar tracks, common in environments where sand, powder or chips would be likely to build up on a flat track.

Jam Nuts and Lock Washers Available.

PCI Non-Metallic Number	A Roller Dia.	B Roller Width	C Stud Dia. +.000/- .001	D Stud Length	E Thread Length	F Fine Thread	G Shoulder Dia.	H Hex Size	P Point Dia. +.000/- .001	M Groove Center	J Shoulder Length
NVTR-1.50	1.500	.781	.437	1.000	.500	7/16-20	.500	3/16	1.125	.391	.031
NVTR-2.00	2.000	.844	.500	1.250	.625	1/2-20	.625	3/16	1.375	.422	.031
NVTR-2.50	2.500	1.313	.750	1.750	.875	3/4-16	.875	5/16	1.500	.688	.063
NVTR-3.50	3.500	1.687	.875	2.000	1.125	7/8-14	1.000	5/16	2.250	.875	.063

PCI Non-Metallic Part Number	Sealed Ball Bearing Capacity (lbs)						Stud Capacity (lbs)		Stationary Tread Capacity (lbs)	Retaining Ring Load	Weight (lbs.)
	Radial Load			Thrust Load			Bending = .75Sy	Shear = .75 x .5Sy			
	3000 Hrs. L ₁₀ Life @ 100 RPM	500 Hrs. L ₁₀ Life @ 33 1/3 RPM	Static	3000 Hrs. L ₁₀ Life @ 100 RPM	500 Hrs. L ₁₀ Life @ 33 1/3 RPM	Static	Load @ Center of Roller	Load @ Mounting Rail			
NVTR-1.50	324	850	428	195	510	107	250	2,480	19	470	.12
NVTR-2.00	542	1,420	746	327	860	187	440	4,100	39	470	.19
NVTR-2.50	1,050	2,750	1,395	750	1,960	697	1,680	7,270	68	550	.59
NVTR-3.50	1,980	5,180	2,950	1,470	3,860	1,475	4,470	18,350	127	1,340	1.2

Features

- Economical corrosion resistant alternative to stainless steel
- Eliminates noise by elimination of metal-to-metal contact
- Improved design providing added contamination exclusion

Extreme Duty Solutions *(For additional information and to explore all the choices for your solution, contact PCI)*

- Food grade lubricant
- Regreasable provisions
- Multiple color options

Potential Markets

- Food processing
- Plastic handling
- Laboratory testing equipment
- Medical
- Marine

- Custom body profiles
- Stainless steel components

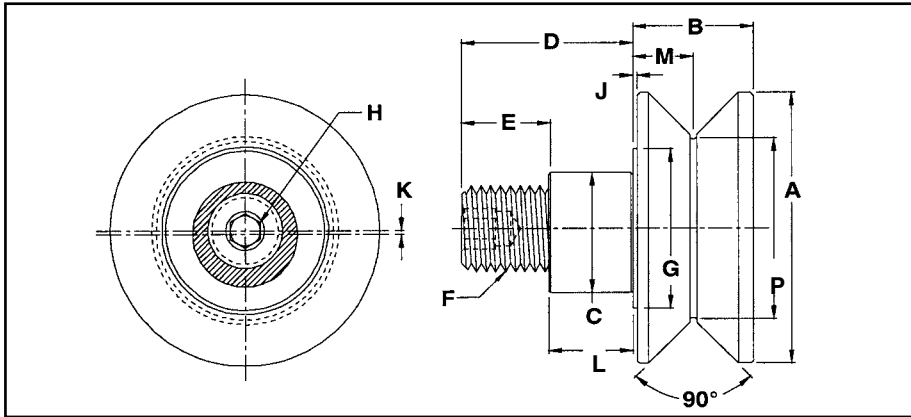
PRO CAL INC.

P.O. Box 115
Alpena, MI 49707-0115

Toll Free 800-323-0966

www.pcimfg.com
e-mail: sales@pcimfg.com or drawings@pcimfg.com

PCI "NVTRE" Series - Non-Metallic Track Roller Stud Type V-Grooved - Eccentric



V-Grooved Eccentric Track Rollers are used where precision alignment is necessary. The stud can be rotated before the roller is tightened into position, which overcomes locational tolerance and unequal loading of multiple rollers. It will also help with alignment in guiding applications.

Jam Nuts and Lock Washers Available.

PCI Non-Metallic Part Number	A Roller Dia.	B Roller Width	C Ecc. Dia. +.000/-001	D Stud Length	E Thread Length	F Fine Thread	G Shoulder Dia.	H Hex Size	L Ecc. Length	K Ecc. Offset	P Point Dia. +.000/-001	M Groove Center	J Shoulder Length
NVTRE-1.50	1.500	.781	.625	1.000	.520	7/16-20	.730	3/16	.480	.030	1.125	.391	.031
NVTRE-2.00	2.000	.844	.687	1.250	.645	1/2-20	.812	3/16	.605	.030	1.375	.422	.031
NVTRE-2.50	2.500	1.313	1.000	1.750	.895	3/4-16	1.250	5/16	.855	.030	1.500	.688	.063
NVTRE-3.50	3.500	1.687	1.187	2.000	1.020	7/8-14	1.500	5/16	.980	.030	2.250	.875	.063

PCI Non-Metallic Part Number	Sealed Ball Bearing Capacity (lbs)						Stud Capacity (lbs)		Stationary Tread Capacity (lbs)	Retaining Ring Load	Weight (lbs.)
	Radial Load			Thrust Load			Bending = .75	Shear = .75			
	3000 Hrs. L ₁₀ Life @ 100 RPM	500 Hrs. L ₁₀ Life @ 33 1/3 RPM	Static	3000 Hrs. L ₁₀ Life @ 100 RPM	500 Hrs. L ₁₀ Life @ 33 1/3 RPM	Static	Load @ Center of Roller	Load @ Mounting Rail			
NVTRE-1.50	324	850	428	195	510	107	250	2,480	19	470	.14
NVTRE-2.00	542	1,420	746	327	860	187	440	4,100	39	470	.22
NVTRE-2.50	1,050	2,750	1,395	750	1,960	697	1,680	7,270	68	550	.69
NVTRE-3.50	1,980	5,180	2,950	1,470	3,860	1,475	4,470	18,350	127	1,340	1.4

Features

- Economical corrosion resistant alternative to stainless steel
- Eliminates noise by elimination of metal-to-metal contact
- Improved design providing added contamination exclusion

Extreme Duty Solutions *(For additional information and to explore all the choices for your solution, contact PCI)*

- Food grade lubricant
- Regreasable provisions
- Multiple color options

Potential Markets

- Food processing
- Plastic handling
- Laboratory testing equipment
- Medical
- Marine

- Custom body profiles
- Stainless steel components

PRO CAL INC.

P.O. Box 115
Alpena, MI 49707-0115

Toll Free 800-323-0966

www.pcimfg.com
e-mail: sales@pcimfg.com or drawings@pcimfg.com

PNEUMATIC CLUTCHES & BRAKES

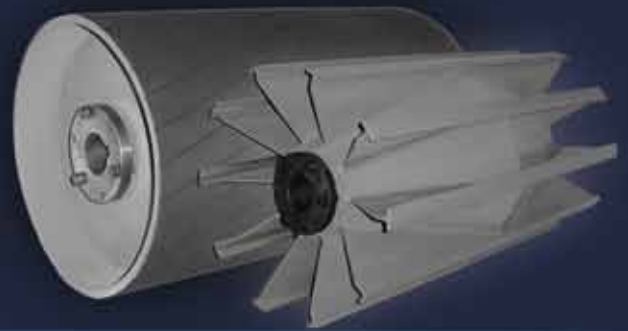
- Components designed for zone or accumulation live roller systems
- Cycles- no more than 5 cycles per minute

CONVEYOR PULLEYS & ACCESSORIES

- Unit/Package Handling Pulleys
 - Formed Gauge Wall Series Pulleys
 - “Manufactured with a Trapezoidal Crown for maximum concentricity and reduced belt wear”
 - Machined Heavy Wall Series Pulleys
- Stainless Steel Drum & Wing Pulleys
 - 3 distinctive stainless steel classes to provide “Stainless Selection and Solutions Simplified”
- Heavy Duty Drum & Wing Pulleys
- Mine Duty Drum & Wing Pulleys
- Spiral Drum & Wing Pulleys
- Deflection Wheels
- Shafting
- Take-Up Frames & Covers
- *Specialty Designs Available*

Lagging & Coating

- Vulcanized Rubber Lagging
- Cold Bond Lagging
- Holz® Replaceable Slide Lagging
- Wing Tip Lagging
- Food Grade Lagging
- Ceramic Lagging
- Urethane Coatings
- *Many Lagging Compounds in Stock*
- *Re-Lagging Service Available*



LOAD BEARING ROLLER ASSEMBLIES *“Breaking the Limits of the Catalog with Choices for a Solution...”*

PRE-ENGINEERED TRACK ROLLERS & CAM FOLLOWERS

- In STOCK and manufactured in Alpena, Michigan
- Directly interchangeable with industry standards
- Bearing options: Ball, Needle, and Tapered Roller Bearing
- Roller Body Profiles: Crowned, Flanged, V-Groove, U-Groove, Channel & I-Beam

EXTREME DUTY SOLUTIONS INCLUDE:

- 316 Stainless Steel
- Non-Metallic
- High Temperature – 390F
- Regreasable

MODIFIED ROLLER DESIGNS

- *1 Week Standard Delivery*
- Common modifications include:
 - Custom relubrication provisions
 - Custom crown profiles
 - Custom grooves
 - Special lubricant

MADE-TO-ORDER DESIGNS

- *2-4 Week Standard Delivery*
- Toll-Free personalized application assistance
- Unique item specification numbers make for easy ordering
- PCI makes Custom Roller Solutions a reality, call us today

PCI, ProCal Inc.

www.pcimfg.com

e-mail: sales@pcimfg.com or

drawings@pcimfg.com

Phone: 989.358.7070 Fax: 989.358.7075

Toll Free 800.323.0966