

FALL PROTECTION

Fall Protection Experts Since 1945

Miller, a component of Honeywell Industrial Safety, is a world-leading brand in fall protection solutions, including: personal fall protection equipment; engineered fall arrest systems; and professional services including training, audits, consulting, product inspection and repairs as well as asset management through cloud-based software.



INDUSTRY FIRSTS AND NEW PRODUCT INNOVATION

- TurboLite Edge Personal Fall Limiter – Cutting-edge fall protection for leading-edge environments. Units for sharp and smooth edges will help you ensure workers are safe in applications requiring foot-level tie-off for work near edges.
- TurboLite™ Personal Fall Limiter – A compact, lightweight, retractable lanyard that offers an affordable alternative to shock-absorbing lanyards
- Twin Turbo Fall Protection System – Easily adapts two TurboLite PFLs for continuous 100% tie-off fall protection
- Falcon™ Self-Retracting Lifelines – Designed to be the lightest, most rugged line of composite cable retractables on the market
- AirCore™ Harness – Engineered with breathable, open-core padding technology that provides optimal air flow while reducing heat and moisture entrapment, keeping a worker drier and cooler
- Revolution™ Harness – Engineered with seven unique components and more than eleven key product features
- DuraFlex® Harness – Patented Miller DuraFlex Harnesses feature specially-formulated elastomer webbing that stretches to maximize comfort, improve safety and increase productivity
- BackBiter® Tie-Back Lanyard with a Miller 5K® Snap Hook – Provides an all-in-one anchorage connector and shock-absorbing lanyard
- Hybrid Energy-Absorbing Lanyards – Full product line featuring Miller® and North® fall protection provides one solution for CSA compliance in both E4 and E6 weight classes and eliminates the need to carry two types of lanyards in stock.



Watch a Video



AAF-TBBDPUG

Miller AirCore™ Harness

- Breathable, Open-Core Padding Technology – Maximizes airflow, and reduces heat and moisture build-up
- Lightweight – 16% lighter than competitive harnesses with aluminum hardware and 20% lighter than harnesses with steel hardware
- One-hand adjustment shoulder cam buckles; Stand-up back D-ring; Quick-connect chest buckle; Pull-free lanyard rings; Rated to 400 lbs. (181.4 kg) capacity
- Available in a variety of configurations for a range of industries, including Construction, General Industry, Utilities, Oil & Gas, and Wind Energy

AirCore™ Harness with Steel Hardware

SKU	Side D-rings	Leg Strap	Removable Belt	Weight
AC-QC/UGN	No	Quick-Connect	No	4.0 lbs. (1.8 kg)
AC-TB/UGN	No	Tongue	No	4.0 lbs. (1.8 kg)
AC-QC-D/UGN	Yes	Quick-Connect	No	4.7 lbs. (2.1 kg)
AC-TB-D/UGN	Yes	Tongue	No	4.7 lbs. (2.1 kg)
AC-QC-BDP/UGN	Yes	Quick-Connect	Yes	6.1 lbs. (2.8 kg)
AC-TB-BDP/UGN	Yes	Tongue	Yes	6.1 lbs. (2.8 kg)
ACMB-TB/UGN	No	Tongue	No	4.0 lbs. (1.8 kg)
ACMB-TB-BDP/UGN	Yes	Tongue	Yes	6.1 lbs. (2.8 kg)

To order AirCore Harnesses with aluminum hardware, add an "A" after the "C" in the model number (ex. ACA-QC/UGN)

AirCore™ Front D-ring Harness

For use in climbing, confined space and rescue applications

SKU	Side D-rings	Leg Strap	Removable Belt	Weight
ACF-TBUG	No	Tongue	No	4.1 lbs. (1.9 kg)
ACF-QCUG	No	Quick-Connect	No	4.1 lbs. (1.9 kg)
ACF-TBDUG	Yes	Tongue	No	4.8 lbs. (2.2 kg)
ACF-QCDUG	Yes	Quick-Connect	No	4.8 lbs. (2.2 kg)
ACF-TBBDPUG	Yes	Tongue	Yes	6.2 lbs. (2.8 kg)
ACF-QCBDPUG	Yes	Quick-Connect	Yes	6.2 lbs. (2.8 kg)

To order AirCore Front D-ring Harnesses with aluminum hardware, replace the "C" in the model number with "A" (ex. AAF-QCUG)



RDT-QC/UBK

Miller Revolution™ Harness

- PivotLink™ Connection – Unique rotary design provides greater comfort in mobility
- Integrated Accessory System – Modular attachment design provides additional connection points for belts / tools / accessories
- ErgoArmor™ Back Shield – Semi-flexible back shield minimizes impact from sharp / heavy snap hooks and self-retracting lifelines
- Web Finals – Clip-on design safely organizes webbing after proper adjustment

Available accessories include: cell phone and radio holders; water bottle holder; bolt, nail and tool holders; hammer loops; plier/tool holder and utility pouch. Universal size (L/XL) fits most.

SKU	Side D-rings	Chest/Leg Strap	Removable Belt
RDT-QC/UBK	No	Quick-Connect	No
RDT-QC-B/UBK	No	Quick-Connect	Yes
RDT-QC-DP/UBK	Yes	Quick-Connect	No
RDT-QC-BDP/UBK	Yes	Quick-Connect	Yes



P950QC/UGN

Miller DuraFlex Python® Ultra Harness

- Cushioned tubular webbing in the shoulder straps minimizes discomfort when required to wear a tool belt; patented DuraFlex® stretchable webbing in the lower torso increases worker mobility with less fatigue
- Quick-connect buckles on the chest and leg straps for easy donning; specially-woven, breathable, comfort-touch back D-ring pad for greater comfort and tangle-free donning
- Universal size (L/XL) fits most

SKU	Side D-rings	Chest/Leg Strap	Special Features
P950QC/UGN	No	Quick-Connect	Comfort-touch back D-ring pad/Belt loops
P950QC-7/UGN	Yes	Quick-Connect	Comfort-touch back D-ring pad/ Belt loops
P950QC-77/UGN	Yes	Quick-Connect	Comfort-touch back D-ring pad/ Belt loops/ Removable waist belt

Miller DuraFlex Ultra™ Harness

- Designed with patented DuraFlex® stretchable webbing for greater comfort, safety and productivity
- Quick-connect buckles on the chest and leg straps for easy donning; specially-woven, breathable, comfort-touch back D-ring pad for greater comfort and tangle-free donning
- Includes friction buckle shoulder straps and belt loops to accommodate a tool belt
- Universal size (L/XL) fits most

SKU	Side D-rings	Chest/Leg Strap	Special Features
E650QC/UGN	No	Quick-Connect	Comfort-touch back D-ring pad/Belt loops
E650QC-7/UGN	Yes	Quick-Connect	Comfort-touch back D-ring pad/Belt loops
E650QC-77/UGN	Yes	Quick-Connect	Comfort-touch back D-ring pad /Belt loops/ Removable waist belt



E650QC-7/UGN

Miller DuraFlex Python® Harness

- Feature wrap-around comfort with cushioned tubular webbing in the upper torso that reduces neck irritation and shoulder stress when wearing a tool belt
- DuraFlex® stretchable webbing in lower torso straps move with the body for greater flexibility, mobility and less fatigue
- Includes friction buckle shoulder straps and belt loops to accommodate a tool belt
- Universal size (L/XL) fits most

SKU	Side D-rings	Leg Strap	Chest Strap	Special Features
P950/UGN	No	Mating	Mating	Santoprene® D-ring back pad / Pull-free lanyard rings/Belt loops
P950-4/UGN	No	Tongue	Mating	Santoprene® D-ring back pad / Pull-free lanyard rings/Belt loops
P950-7/UGN	Yes	Mating	Mating	Santoprene® D-ring back pad / Pull-free lanyard rings/Belt loops
P950-58/UGN	Yes	Tongue	Mating	Santoprene® D-ring back pad / Pull-free lanyard rings/Belt loops
P950-77/UGN	Yes	Tongue	Mating	Santoprene® D-ring back pad / Pull-free lanyard rings / Belt loops Removable tool belt / 6-in. (15 cm) back pad



P950-4/UGN



E650-7/UGN

Miller DuraFlex® Stretchable Harness

- Stretch webbing provides greater comfort, safety and mobility
- Pull-free lanyard rings (2) allow user to attach lanyard when not in use
- Belt loops to accommodate a tool belt
- Universal size (L/XL) fits most

SKU	Side D-rings	Leg Strap	Chest Strap	Special Features
650/UGN	No	Mating	Mating	Pull-up adjustment / Belt loops
E650-4/UGN	No	Tongue	Mating	Pull-up adjustment / Belt loops
E650-7/UGN	Yes	Mating	Mating	Pull-up adjustment / Belt loops
E650-58/UGN	Yes	Tongue	Mating	Pull-up adjustment / Belt loops
E552/UGN	Yes	Mating	Mating	Front D-ring



650T-58/UGK

Miller HP™ (High Performance) Non-Stretch Harness

- Lightweight and economical harness for light construction, general industry, painting and maintenance applications
- Comfort-touch back D-ring pad for tangle-free donning
- Universal size (L/XL) fits most

SKU	Side D-rings	Leg Strap	Chest Strap	Special Features
650T/UGK	No	Mating	Mating	Pull-free lanyard rings / Belt loops
650T-4/UGK	No	Tongue	Mating	Pull-free lanyard rings / Belt loops
650T-58/UGK	Yes	Tongue	Mating	Pull-free lanyard rings / Belt loops



T4577/UAK

Miller Titan™ II Harness

- Hi-Viz orange webbing increases work site and regulatory compliance
- Tool Belt stays in position when disconnected
- Easier vertical adjustability that stays in place
- Integrated Back/Shoulder Pad (on construction style) is strategically placed and offers optimal airflow, allowing for increased comfort
- Rated for up to a 400-lb. (181.4 kg) worker
- Universal size (L/XL) fits most

Titan™ II Non-Stretch Harness	Titan™ II T-Flex Harness	Side D-Rings	Chest Strap Buckles	Leg Strap Buckles	Shoulder/Waist Padding	Removable Tool Belt
SKU	SKU					
T4000/UAK	TF4000/UAK	No	Mating	Mating	No	No
T4007/UAK	TF4007/UAK	Yes	Mating	Mating	No	No
T4500/UAK	TF4500/UAK	No	Mating	Tongue	No	No
T4507/UAK	TF4507/UAK	Yes	Mating	Tongue	No	No



T4500/UAK

Titan™ II Contractor Harness						
SKU	SKU	Side D-Rings	Chest Strap Buckles	Leg Strap Buckles	Shoulder/Waist Padding	Removable Tool Belt
T4577/UAK	N/A	Yes	Mating	Tongue	Yes	Yes



Help prevent suspension trauma

Miller Relief Step™ Safety Device

- Alleviates the effects of orthostatic intolerance, also known as suspension trauma
- When used after a fall, provides support and enhances blood circulation until rescue – permitting the ability to move and flex leg muscles
- Small and lightweight; Attaches to any brand full-body harness
- Utilizing two (2) Relief Steps (one for each leg/foot) assures greater comfort until rescue is completed

SKU	Description
9099X/12	Consists of a box of 12 Relief Step Safety Devices
9099/36BULK	36 Relief Step Safety Devices in bulk quantity

MILLER TOOL LANYARDS



Preventing injury or loss from dropped objects

The Miller® Tool Lanyards family addresses the stringent issue of fatalities caused by dropped objects and complements a reliable fall protection integrated solution. With the addition of the Tool Lanyards family, Miller fall protection offers total safety solutions through a complete product portfolio for anyone working at heights.

Miller Tool Lanyards are engineered to deliver the assurance you expect from Miller fall protection, in a broad offering that is:

- Reliable and safe – durable design and lasting materials, reducing chances to drop your tools
- Versatile – adjustable products that can match any tool type and size
- Compact and lightweight – reduce worker’s fatigue and increase productivity
- Simple – easy to choose, easy to install, easy to use
- Superior mobility – allows natural movement

	SKU	Description	Max Tool Weight
SWIVEL TETHER ATTACHMENT POINT	MSWVLCINCHLOOP	Swivel tether cinch loop with attachment point; 10 per case	Up to 10 lbs. (4.5 kg)
DOUBLE D-RING TOOL SHACKLE	MDBL-DPIN04-06	Double D-ring with captive eye pin 0.4 in. (10 mm) x 0.6 in. (15 mm); 10 per case	Up to 10 lbs. (4.5 kg)
	MDBL-DPIN75-1	Double D-ring with captive eye pin 0.75 in. (19 mm) x 1.0 in. (25 mm); 10 per case	Up to 10 lbs. (4.5 kg)
D-RING ATTACHMENT POINT AND TAPE	MSEALTAPE1-36	1 in. (25 mm) x 36 ft. (11 m) vibrant orange reinforced attachment tape; for use with MHDTW-SDR2-1 and MTW-SDR2-5; 1 ea.	Up to 3 lbs. (1.4 kg)
	MHDTW-SDR2-1	1 in. (25 mm) heavy duty webbing with D-ring; for use with MSEALTAPE1-36; 25 per case	Up to 3 lbs. (1.4 kg)
	MTW-SDR2-5	0.5 in. (13 mm) heavy duty webbing with D-ring; for use with MSEALTAPE1-36; 25 per case	Up to 3 lbs. (1.4 kg)
TOOL LANYARDS WITH CARABINER	MBUNLAN32-48CAR	Bungee style; High strength elastic with stainless steel screw gate carabiner; Expands from 32 in. (0.8 m) to 48 in. (1.2 m); 10 per case	Up to 15 lbs. (6.8 kg)
	MCOILLAN36-48	Coil style; Expands 3 in. (8 cm) - 48 in. (122 cm); (1) Swivel and (2) screw gate carabiners; 10 per case	Up to 5 lbs. (2.3 kg)
	MRTRACTLAN48IN	Retractable style; Extends up to 48 in. (122 cm); (1) screw gate carabiner and split ring; 1 ea.	Up to 3 lbs. (1.4 kg)
HARD HAT LANYARD	MHARDHATLAN	Adjustable lanyard with storage clip; 100 per case	Up to 2 lbs. (1.0 kg)
DRILL BOOT® WITH TETHER LOOP	MDRILBOOTLG	Large Drill Boot™ with tether loop and side pockets; 1 ea.	Up to 7 lbs. (3.2 kg)
	MDRILBOOTSM	Small Drill Boot™ with tether loop and side pockets; 1 ea.	Up to 7 lbs. (3.2 kg)
TOOL POUCH	MTAPEMEASPOUCH	Tape Measure Sleeve with D-ring; 1 ea.	Up to 2 lbs. (0.9 kg)
PERSONAL PROTECTIVE EQUIPMENT (PPE) CADDY	MGLOVCAD	Glove holder with built-in attachment clips; 50 per case	Up to 1 lb. (0.5 kg)



The Miller TurboLite™ Edge Series

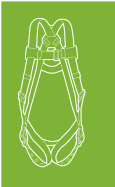
Honeywell’s extensive series of Miller TurboLite Personal Fall Limiters (PFLs) is even more versatile with the introduction of the TurboLite Edge Series.

Whether you work in construction, industrial, or even wind power, units for sharp and smooth edges will help you ensure workers are safe in applications requiring foot-level tie-off or work near edges.

MAKE CONFIDENCE YOUR TRUE EDGE

TurboLite Edge PFLs are engineered to deliver the assurance you expect from Miller Fall Protection, in a wide range of lengths and innovative features:

- Safe – Models are available for sharp and smooth edges. Sharp Edge models are ANSI Leading Edge certified for edges with a radius ≥ 0.005 in. (0.13mm). Smooth Edge models are designed for a radius ≥ 0.060 in. (1.5 mm).
- Versatile – Can be used for foot-level tie-off or anchored overhead as a traditional SRL for workers up to 420 lbs. (189 kg)
- Compact and Lightweight – Reduce fatigue, increase productivity.
- Simple – Easy to install, easy to use.
- Superior Mobility – Integral swivel design prevents lifeline from twisting
- Durable – High-impact nylon housing and abrasion-resistant webbing
- Reliable – Durable design with integral shock absorber is easy to repair and replace.
- Configurable – A broad range of working lengths featuring cable and web lifelines with a wide variety of lifeline connectors.
- Twin Models available – Provides 100% tie-off connection



The TurboLite Edge Series is available in both web and galvanized cable lifeline options, in working lengths that range from 6–12 ft. (1.8–3.7 m).

All models shown include 3,600-lb. gate-strength connectors



Miller TurboLite™ EXTREME

Cable Lifeline for Sharp Edge Applications

SKU/Length 6-ft.	9-ft.	Single or Twin	Lifeline Connector(s)
MFLEC-3/6FT	MFLEC-3/9FT	Single	Steel Locking Snap Hook
MFLEC-4/6FT	MFLEC-4/9FT	Single	Steel Locking Rebar Hook
MFLEC-11/6FT	MFLEC-11/9FT	Single	Aluminum Locking Snap Hook
MFLEC-12/6FT	MFLEC-12/9FT	Single	Aluminum Locking Rebar Hook
MFLEC-18/6FT	MFLEC-18/9FT	Single	Aluminum Captive Eye Carabiner
MFLEC2-3/6FT	MFLEC2-3/9FT	Twin	Steel Locking Snap Hooks
MFLEC2-4/6FT	MFLEC2-4/9FT	Twin	Steel Locking Rebar Hooks
MFLEC2-11/6FT	MFLEC2-11/9FT	Twin	Aluminum Locking Snap Hooks
MFLEC2-12/6FT	MFLEC2-12/9FT	Twin	Aluminum Locking Rebar Hooks
MFLEC2-18/6FT	MFLEC2-18/9FT	Twin	Aluminum Captive Eye Carabiners



MFLEW2-12/6FT

MFLEW-3/6FT



MFL-1-Z7/6FT



MFL-12-Z7/9FT

Miller TurboLite™ MAX

Web Lifeline for Smooth Edge Applications

SKU/Length 6-ft.	9-ft.	12-ft.	Single or Twin	Lifeline Connector
MFLEW-3/6FT	MFLEW-3/9FT	MFLEW-3/12FT	Single	Steel Locking Snap Hook
MFLEW-4/6FT	MFLEW-4/9FT	MFLEW-4/12FT	Single	Steel Locking Rebar Hook
MFLEW-11/6FT	MFLEW-11/9FT	MFLEW-11/12FT	Single	Aluminum Locking Snap Hook
MFLEW-12/6FT	MFLEW-12/9FT	MFLEW-12/12FT	Single	Aluminum Locking Rebar Hook
MFLEW-18/6FT	MFLEW-18/9FT	MFLEW-18/12FT	Single	Aluminum Captive Eye Carabiner
MFLEW2-3/6FT	MFLEW2-3/9FT	MFLEW2-3/12FT	Twin	Steel Locking Snap Hooks
MFLEW2-4/6FT	MFLEW2-4/9FT	MFLEW2-4/12FT	Twin	Steel Locking Rebar Hooks
MFLEW2-11/6FT	MFLEW2-11/9FT	MFLEW2-11/12FT	Twin	Aluminum Locking Snap Hooks
MFLEW2-12/6FT	MFLEW2-12/9FT	MFLEW2-12/12FT	Twin	Aluminum Locking Rebar Hooks
MFLEW2-18/6FT	MFLEW2-18/9FT	MFLEW2-18/12FT	Twin	Aluminum Captive Eye Carabiners

Miller TurboLite™ Personal Fall Limiter

Cost-effective, compact and lightweight, Miller TurboLite Personal Fall Limiters make the need for shock-absorbing lanyards obsolete.

- Reduces fall clearance requirements
- Available in 6-ft. and 9-ft. lengths to meet the needs of a wide variety of applications
- Compact and lightweight, comparable to a shock-absorbing lanyard
- Attaches directly to the back D-ring of a harness for increased mobility
- High-impact nylon housing and abrasion-resistant webbing provide long service life
- Integral swivel prevents lifeline from twisting
- Rated for up to a 400-lb. (181.4-kg) worker

SKU/Length	Unit Connector	Lanyard End Connector
6-ft. Models		
MFL-1-Z7/6FT	Steel Twist-Lock Carabiner	Steel Locking Snap Hook
MFL-2-Z7/6FT	Steel Twist-Lock Carabiner	Steel Locking Rebar Hook
MFL-9-Z7/6FT	Steel Locking Snap Hook	Steel Locking Snap Hook
MFL-11-Z7/6FT	Aluminum Twist-Lock Carabiner	Aluminum Locking Snap Hook
MFL-12-Z7/6FT	Aluminum Twist-Lock Carabiner	Aluminum Locking Rebar Hook
9-ft. Models		
MFL-1-Z7/9FT	Steel Twist-Lock Carabiner	Steel Locking Snap Hook
MFL-11-Z7/9FT	Aluminum Twist-Lock Carabiner	Aluminum Locking Snap Hook
MFL-12-Z7/9FT	Aluminum Twist-Lock Carabiner	Aluminum Locking Rebar Hook

All models shown include 3,600-lb. gate-strength connectors

Watch a Video





MFLT-1/7.5FT



MFLTC-1/7.5FT

Miller Turbo T-BAK™ Personal Fall Limiter

- The first retractable designed to tie-back anywhere along the lifeline
- Cost-effective alternative to tie-back, shock-absorbing lanyards
- All-in-one design – self-retracting lifeline and anchorage connector
- Heavy-duty, abrasion-resistant web lifeline with 7.5-ft. working capacity
- Designed for anchoring below a user’s harness back D-ring for greater safety
- Integrated shock absorber with load indicator
- Meets stringent ANSI standard requiring that 24-inches (.61 m) or less of lifeline extends out of the housing when the unit is fully retracted
- The Miller Turbo T-BAK Fall Protection System easily adapts two units for 100% tie-off fall protection
- Rated for up to a 400-lb. (181.4-kg) worker

SKU/Length	Description and Unit Connector
------------	--------------------------------

Turbo T-BAK™ Personal Fall Limiter

MFLT-1/7.5FT	Turbo T-BAK without unit connector
MFLT-2/7.5FT	Turbo T-BAK with steel twist-lock carabiner
MFLT-3/7.5FT	Turbo T-BAK with aluminum twist-lock carabiner
MFLT-5/7.5FT	Turbo T-BAK with steel locking snap hook

Turbo T-BAK™ Fall Protection System

MFTLC-1/7.5FT	Twin Turbo G2 Connector with two (2) MFLT-1/7.5FT Turbo T-BAK units
MFLTB-1/7.5FT	Twin Turbo D-ring Connector with two (2) MFLT-1/7.5FT Turbo T-BAK units

All models shown include Miller 5K® locking snap hook for tie-back connection. All other connectors include 3,600-lb. gate-strength.



MFLC-3-Z7/6FT

MFLC-12-Z7/9FT



Miller Twin Turbo™ Fall Protection System with G2 Connector

New patent-pending Miller Twin Turbo™ G2 Connector and patented D-Ring Connector easily adapt two (2) lightweight Miller TurboLite™ Personal Fall Limiters for continuous 100% tie-off fall protection.

- Better alternative to double-leg lanyards – Reduces fall clearance requirements for use in more applications
- PFLs swivel independently – Provide ultimate worker mobility and prevent webbing from twisting and binding in the unit
- Lightest-weight Twin Connector on the market – Increases productivity by reducing worker fatigue
- Superior durability – Corrosion-resistant aluminum connector teamed with high-impact nylon result in a longer product life
- Superior safety – Webbing Retainer Clip rotates freely to prevent unintentional opening of carabiner gate during a fall; increases worker safety
- Rated for up to a 400-lb. (181.4-kg) worker

SKU/Length	Unit Connector	Lanyard End Connector
6-ft. Models		
MFLC-3-Z7/6FT	Twin Turbo G2 Connector	Steel Snap Hooks
MFLC-4-Z7/6FT	Twin Turbo G2 Connector	Steel Rebar Hooks
MFLC-11-Z7/6FT	Twin Turbo G2 Connector	Aluminum Snap Hooks
MFLC-12-Z7/6FT	Twin Turbo G2 Connector	Aluminum Rebar Hooks
9-ft. Models		
MFLC-3-Z7/9FT	Twin Turbo G2 Connector	Steel Snap Hooks
MFLC-11-Z7/9FT	Twin Turbo G2 Connector	Aluminum Snap Hooks
MFLC-12-Z7/9FT	Twin Turbo G2 Connector	Aluminum Rebar Hooks

All models shown include 3,600-lb. gate-strength connectors



CFL-4-Z7/9FT



PFL-4-Z7/9FT

Miller Black Rhino™ Cable Self-Retracting Lifeline

- 9-ft. self-retracting lifeline with stainless steel wire rope to endure the daily rigors of harsh environments
- Quick-activating, high-strength stainless steel braking system – arrests free falls, providing a quick, safe rescue
- Integral load indicator indicates when the unit must be removed from service and returned for repair
- Repairable; No annual factory recertification required
- Rated for up to a 310-lb. (140.6-kg) worker

SKU/Length	Unit Connector	Lanyard End Connector
CFL-2-Z7/9FT	Steel Twist-Lock Carabiner	Steel Locking Swivel Snap Hook
CFL-4-Z7/9FT	Stainless Steel Swivel and Steel Twist-Lock Carabiner	Steel Locking Swivel Snap Hook
CFL-5-Z7/9FT	Stainless Steel Swivel and Steel Locking Rebar Hook	Steel Locking Swivel Snap Hook

All models shown include 3,600-lb. gate-strength connectors

Miller Scorpion™ Personal Fall Limiter

- Lightweight and compact design; 9-ft. web lifeline
- Dual operation: Attach directly to harness back D-ring or use as traditional retractable lifeline
- Quick-activating, high-strength stainless steel braking system – arrests free falls, providing a quick, safe rescue
- No annual factory recertification required
- Visual load indicator indicates when the unit must be removed from service
- Rated for up to a 310-lb. (140.6-kg) worker. 400-lb. (181.4-kg) capacity models available upon request

SKU/Length	Unit Connector	Lanyard End Connector
PFL-2-Z7/9FT	Steel Twist-Lock Carabiner	Steel Locking Snap Hook
PFL-4-Z7/9FT	Steel Twist-Lock Carabiner and Stainless Steel Swivel Shackle	Steel Locking Snap Hook
PFL-6-Z7/9FT	Steel Locking Rebar Hook and Stainless Steel Swivel Shackle	Steel Locking Snap Hook
PFL-7-Z7/9FT	Steel Locking Snap Hook and Stainless Steel Swivel Shackle	Steel Locking Snap Hook

All models shown include 3,600-lb. gate-strength connectors



Miller MiniLite® Fall Limiter

- Lightweight, compact, 11-ft. self-retracting web lanyard
- Corrosion-resistant, stainless steel interior components with high-impact protective outer cover
- Visual load indicator identifies when a unit must be removed from service
- Rated for up to a 310-lb. (140.6-kg) worker

SKU/Length	Unit Connector	Lanyard End Connector
FL11-Z7/11FT	No Unit Connector	Steel Locking Snap Hook
FL11-1-Z7/11FT	Steel Twist-Lock Carabiner	Steel Locking Snap Hook
FL11-3-Z7/11FT	Steel Twist-Lock Carabiner and Swivel Shackle	Steel Locking Snap Hook
FL11-6-Z7/11FT	Steel Locking Rebar Hook and Swivel Shackle	Steel Locking Snap Hook
FL11-8-Z7/11FT	Steel Locking Snap Hook and Swivel Shackle	Steel Locking Snap Hook

All models shown include 3,600-lb. gate-strength connectors

Miller Falcon™ Self-Retracting Lifeline

- High impact-resistant nylon housing withstands the harsh rigors of the toughest applications
- Corrosion-resistant stainless steel and aluminum internal components extend service life and reduce replacement costs
- Dual swivels (unit top and snap hook) included on all cable models to minimize lifeline twisting during use
- Unique side payout design reduces wear on the entry bushing and cable for smooth operation with less drag
- No annual factory recertification required, keeping units on the jobsite for increased productivity
- Falcon web SRL models rated for up to a 400-lb. (181.4-kg) worker
- Falcon cable SRL models rated for up to a 310-lb. (140.6-kg) worker

SKU/Length	Description	Length
MP16P-Z7/16FT	16-ft. web lifeline with stainless steel swivel, carabiner and steel locking snap hook	16 ft. (5 m)
MP20P-Z7/20FT	20-ft. web lifeline with stainless steel swivel, carabiner and steel locking snap hook	20 ft. (6 m)
MP20G-Z7/20FT	20-ft. galvanized cable lifeline with steel locking swivel snap hook, tagline and steel twist-lock carabiner	20 ft. (6 m)
MP30G-Z7/30FT	30-ft. galvanized cable lifeline with steel locking swivel snap hook, tagline and steel twist-lock carabiner	30 ft. (9 m)
MP50G-Z7/50FT	50-ft. galvanized cable lifeline with steel locking swivel snap hook, tagline and steel twist-lock carabiner	50 ft. (15 m)
MP65G-Z7/65FT	65-ft. galvanized cable lifeline with steel locking swivel snap hook, tagline and steel twist-lock carabiner	65 ft. (20 m)

All models shown include 3,600-lb. gate-strength connectors





Watch a Video



SSRL130G1



SSRL175S2

Miller DuraSeal™ Self-Retracting Lifeline

- Prevents contaminants from entering the unit with highest industry rated sealed technology IP69K
- Internal components are sealed to protect from debris, water, and chemicals
- Robust brake design withstands multiple falls
- Provides quick, low-cost repair with Miller Rapid Replace field replaceable lifeline
- Lightest weight sealed SRL offering includes models up to 30% lighter than competitive sealed SRLs; provides easier installation and transport
- Models with mounting plate for attachment to a 4-hole bold pattern enables quicker, easier installation and protection from rain
- Rated for up to a 420-lb. (189-kg) worker

SKU	Description	Length
Miller DuraSeal™ Sealed SRL with Cable Sling, Tagline, and 2 Carabiners		
SSRL50G1	3/16-in. Galvanized Steel Lifeline	50 ft. (15 m)
SSRL50S1	3/16-in. Stainless Steel Lifeline	50 ft. (15 m)
SSRL130G1	3/16-in. Galvanized Steel Lifeline	130 ft. (40 m)
SSRL130S1	3/16-in. Stainless Steel Lifeline	130 ft. (40 m)
SSRL175G1	3/16-in. Galvanized Steel Lifeline	175 ft. (53 m)
SSRL175S1	3/16-in. Stainless Steel Lifeline	175 ft. (53 m)
Miller DuraSeal™ Sealed SRL with Cable Sling, Tagline, 2 Carabiners, and 4-Hole Mounting Plate		
SSRL130G2	3/16-in. Galvanized Steel Lifeline	130 ft. (40 m)
SSRL130S2	3/16-in. Stainless Steel Lifeline	130 ft. (40 m)
SSRL175G2	3/16-in. Galvanized Steel Lifeline	175 ft. (53 m)
SSRL175S2	3/16-in. Stainless Steel Lifeline	175 ft. (53 m)

100-ft. (30 m) lifeline models are available. All models shown include 3,600-lb. gate-strength connectors

Miller MightyLite™ Self-Retracting Lifeline

- Corrosion-resistant stainless steel and aluminum components extend service life
- Double-swivel design prevents lifeline from twisting and kinking
- Narrow payout port prevents intrusion of dirt and debris
- No annual factory recertification required, keeping units on the jobsite for increased productivity
- Steel Twist-Lock Carabiner for attaching to anchorage and tagline are included
- Models available with stainless steel cable lifeline



RL20P-Z7/20FT



RL65G-Z7/65FT

SKU/Length	Description	Length
RL20P-Z7/20FT	1-in. polyester webbing with steel locking swivel snap hook	20 ft. (6 m)
RL50P-Z7/50FT	1-in. polyester webbing with steel locking swivel snap hook	50 ft. (15 m)
RL20G-Z7/20FT	3/16-in. galvanized cable lifeline with steel swivel locking snap hook	20 ft. (6 m)
RLS30G-Z7/30FT	3/16-in. galvanized cable lifeline with steel swivel locking snap hook	30 ft. (9 m)
RL50G-Z7/50FT	3/16-in. galvanized cable lifeline with steel swivel locking snap hook	50 ft. (15 m)
RL65G-Z7/65FT	3/16-in. galvanized cable lifeline with steel swivel locking snap hook	65 ft. (20 m)

All models shown include 3,600-lb. gate-strength connectors



RL65G-Z7LE/65FT

Miller MightyLite™ Leading Edge Self-Retracting Lifeline

- Designed to protect a worker if a fall occurs that involves going over an edge
- Features a shock absorber integrated into the lifeline, lowering fall arrest forces
- Durable, corrosion-resistant stainless steel and aluminum construction extends service life
- 30% lighter than competitive models in class for easy handling
- Steel twist-lock carabiner and tagline included for easy lifeline access and connection
- Rated for up to a 310-lb. (140.6-kg) worker in leading edge applications and up to a 400-lb. (181.4-kg) worker when mounted overhead
- Models available with Kevlar® Shock-Absorbing Packs for Welding Applications

SKU/Length	Description	Length
RL20G-Z7LE/20FT	3/16-in. galvanized cable lifeline with steel locking swivel snap hook	20 ft. (6 m)
RLS30G-Z7LE/30FT	3/16-in. galvanized cable lifeline with steel locking swivel snap hook	30 ft. (9 m)
RL50G-Z7LE/50FT	3/16-in. galvanized cable lifeline with steel locking swivel snap hook	50 ft. (15 m)
RL65G-Z7LE/65FT	3/16-in. galvanized cable lifeline with steel locking swivel snap hook	65 ft. (20 m)

All models shown include connectors with 3,600-lb. gate-strength



6756RS-Z7

Miller Positioning Assembly

SKU	Description
6756RS-Z7	Rebar chain assembly with two locking snap hooks and one locking rebar hook; swivel attachment and length adjuster

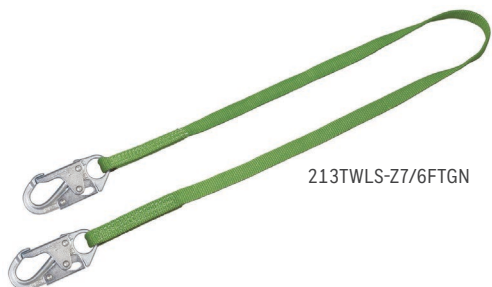
Note: Locking Snap Hook – 3/4-in. (19 mm) gate opening; Locking Rebar Hook – 2-1/2-in. (64 mm) gate opening. All models shown include 3,600-lb. gate-strength connectors





Miller HP™ and Positioning and Restraint Lanyards

- Rope, Cable and Web Lanyards recommended for “work positioning” and “restraint” only
- Rope lanyards are available in standard nylon or polyester (for greater chemical resistance) to meet user needs
- Cable lanyards are heat resistant and highly abrasion resistant
- Standard web lanyards are economical, abrasion resistant and easy to clean



SKU/Length	Material	Harness Connection	Anchorage Connection	Special Feature	Length*
Miller HP Positioning and Restraint Lanyards					
210TWLS-Z7/6FTGN	Webbing	Locking snap hook	Locking snap hook	Adjustable	6 ft. (1.8 m)
213TWLS-Z7/6FTGN	Webbing	Locking snap hook	Locking snap hook	-	6 ft. (1.8 m)
8928-Z7/18INBK	D-ring extension				
Miller Positioning and Restraint Lanyards					
198RLS-2/6FTWH	Nylon rope	Choke-off loop	Locking snap hook	-	6 ft. (1.8 m)
201RLS-2-Z7/6FTWH	Nylon rope	Locking snap hook	Locking snap hook	-	6 ft. (1.8 m)
202RRS-2/6FTWH	Nylon rope	Locking snap hook	Locking rebar hook	-	6 ft. (1.8 m)
203RLS-2/6FTWH	Nylon rope	Locking snap hook	Locking snap hook	Adjustable	6 ft. (1.8 m)
207LS-Z7/6FTG	Cable	Locking snap hook	Locking snap hook	-	6 ft. (1.8 m)
207NLS-Z7/6FTV	Vinyl-coated wire rope	Locking snap hook	Locking snap hook	-	6 ft. (1.8 m)
210WLS-Z7/6FTYL	Polyester webbing	Locking snap hook	Locking snap hook	Adjustable	6 ft. (1.8 m)
212WLS-Z7/6FTYL	Polyester webbing	Locking snap hook	Web loop	-	6 ft. (1.8 m)
213WLS-Z7/6FTYL	Polyester webbing	Locking snap hook	Locking snap hook	-	6 ft. (1.8 m)
226WRS-Z7/6FTYL	Polyester webbing	Locking snap hook	Locking rebar hook	-	6 ft. (1.8 m)
1014937	Kernmantle rope	Twist-lock carabiner	Locking rebar hook	Non-removable adjustable rope grab	6 ft. (1.8 m)
1014936	Kernmantle rope	Twist-lock carabiner	Locking rebar hook	-	4-ft. (1.2 m)

*Additional lengths are available. Locking Snap Hook – 3/4-in. (19 mm) gate opening; Locking Rebar Hook – 2-1/2-in. (64 mm) gate opening.



216M-Z7/6FTGNC



231M-Z7/6FTGNC



216TWLS-Z7/6FTGNC



913TWLS-Z7/6FTGNC

Miller Manyard® II Shock-Absorbing Lanyard

- Specially-woven shock-absorbing inner core smoothly expands to reduce fall arrest forces
- Heavy-duty tubular web outer jacket serves as a wear indicator and back-up strap to the red inner core for added safety
- Working load of 310 lbs. (140.6 kg) and features a warning flag to indicate that it has arrested a fall

SKU/Length	Number of Legs	Harness Connection	Anchorage Connection
216M-Z7/6FTGNC	One	Locking Snap Hook	Locking Snap Hook
219M-Z7/6FTGNC	One	Locking Snap Hook	Locking Rebar Hook
231M-Z7/6FTGNC	Two	Locking Snap Hook	Locking Rebar Hooks

All models shown include 3,600-lb. gate-strength connectors

Miller Manyard HP™ Shock-Absorbing Lanyard

- 6-ft. (1.8 m) web tubular lanyard with a built-in shock-absorbing inner core that smoothly expands to reduce fall arrest forces
- Heavy-duty tubular web outer jacket serves as a back-up lanyard for added safety
- Unique warning flag indicates unit has been involved in a fall and should be removed from service
- Maximum work load of 310 lbs. (140.6 kg)

SKU/Length	Number of Legs	Harness Connection	Anchorage Connection
216TWLS-Z7/6FTGNC	One	Locking Snap Hook	Locking Snap Hook
219TWLS-Z7/6FTGNC	One	Locking Snap Hook	Locking Rebar Hook
231TWLS-Z7/6FTGNC	Two	Locking Snap Hook	Locking Rebar Hooks
232TWLS-Z7/6FTGNC	Two	Locking Snap Hook	Locking Snap Hooks

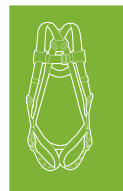
All models shown include 3,600-lb. gate-strength connectors

Miller HP™ Lanyard with SofStop® Shock Absorber

- 6-ft. (1.8 m) web lanyard with a SofStop shock absorber pack is designed with a specially-woven inner core that smoothly expands to reduce fall arrest forces
- Includes heavy-duty back-up safety strap

SKU/Length	Number of Legs	Harness Connection	Anchorage Connection	Special Features
910TWLS-Z7/6FTGNC	One	Locking Snap Hook	Locking Snap Hook	Adjustable
913TWLS-Z7/6FTGNC	One	Locking Snap Hook	Locking Rebar Hook	N/A
8798T-Z7/6FTGNC	Two	Locking Snap Hook	Locking Snap Hooks	N/A
8798TR-Z7/6FTGNC	Two	Locking Snap Hook	Locking Rebar Hooks	N/A

All models shown include 3,600-lb. gate-strength connectors





913SS-Z7/6FTGNC

Miller StretchStop® Lanyard with SofStop® Shock Absorber

- Contracts 6 ft. (1.8 m) to 4 ft. (1.2 m), greatly reducing the chances of tripping, snagging or dragging
- SofStop shock absorber pack is designed with a special woven inner core that smoothly expands to reduce fall arrest forces
- Heavy-duty tubular web outer jacket serves as a back-up lanyard for added safety

SKU/Length	Number of Legs	Harness Connection	Anchorage Connection
913SS-Z7/6FTGNC	One	Locking Snap Hook	Locking Snap Hook
913RSS-Z7/6FTGNC	One	Locking Snap Hook	Locking Rebar Hook
8798SS-Z7/6FTGNC	Two	Locking Snap Hook	Locking Snap Hook
8798RSS-Z7/6FTGNC	Two	Locking Snap Hook	Locking Rebar Hook

All models shown include 3,600-lb. gate-strength connectors

Miller BackBiter® Tie-Back Lanyards

- All-in-one 6-ft. (1.8 m) lanyard with SofStop® shock absorber and cross-arm anchorage connector
- Unique Miller 5K® snap hook with 5,000-lb. (22 kN) gate load capacity from any angle for greater safety
- Heavy-duty webbing with five times more abrasion resistance
- SofStop® shock absorber pack is designed with a special woven inner core that smoothly expands to reduce fall arrest forces
- Heavy-duty tubular web outer jacket serves as a back-up lanyard for added safety



913B/6FTGNC

SKU/Length	Number of Legs	Anchorage Connection	Harness Connection
913B/6FTGNC	One	Locking 5K Snap Hook	Locking Snap Hook
8798B/6FTGNC	Two	Locking 5K Snap Hook	Locking Snap Hooks

All models shown include 3,600-lb. or greater gate-strength connectors

Rope Grabs and Lifelines



8174/U



300L/50FTBL

SKU	Description
8175/C	Trailing Rope Grab – Stainless steel trailing rope grab for use with 5/8-in. (16 mm) rope
300L-Z7/50FTBL	Polypropylene blend rope lifeline with locking snap hook and loop; 5/8-in. diameter; 50 ft. (15 m)



8183/6FTGN

Miller Cross-Arm Strap Anchorage Connector

- Designed to wrap around approved I-beams or other structures for a secure attachment point for lanyards and self-retracting lifelines
- Rated for up to a 400-lb. (181 kg) worker

Web Cross-Arm Straps wrap around I-beams and other structures and attach with a 2-in. (51 mm) D-ring that slips through a 3-in. (76 mm) D-ring

SKU/Length	Description
8183/3FTGN	3-ft. (0.9 m) web cross-arm strap
8183/4FTGN	4-ft. (1.2 m) web cross-arm strap
8183/6FTGN	6-ft. (1.8 m) web cross-arm strap
8184/3FTGN	3-ft. web cross arm strap with wear pad
8184/4FTGN	4-ft. web cross arm strap with wear pad
8184/6FTGN	6-ft. web cross arm strap with wear pad

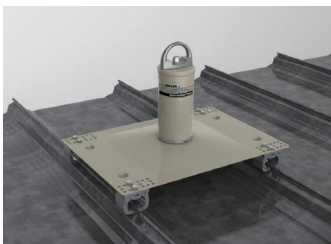


470/

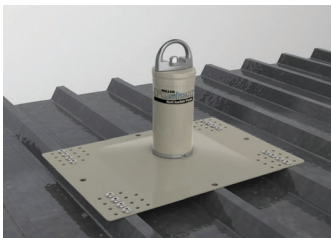
Miller Wire Hook Anchor

- Stainless steel wire hook is fast and easy to use
- Rated for up to a 400-lb. (181 kg) worker

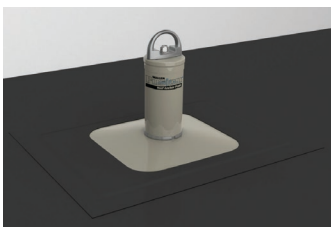
SKU	Description
470/	Connects to various approved anchorages, including railings, small I-beams, angle iron and scaffolding. Squeeze the spring-loaded hook and slip the large opening over the approved structure



Standing Seam



Metal Sheathing



Membrane

Miller Fusion™ Roof Anchor Post

- Permanent or temporary solution for roof safety
- Versatile single-point anchor adapts to a wide range of roof designs
- Protects worker by maintaining a secure connection to the structure;
- Protects the structure with a unique energy-absorbing load distribution system

SKU	Description	Designed to Accommodate
X10000	Small Base w/ Post & Clamping Assembly Kit	Standing seam spacing from 11.75-in. to 17-in. (298 mm - 432 mm)
X10001	Large Base w/ Post & Clamping Assembly Kit	Standing seam spacing from 11.75-in. to 21.25-in. (298 mm - 540 mm)
X10002	Large Base, Post, Clamping Assembly Kit & Extension Bars	Standing seam spacing from 11.75-in. to 24-in. (298 mm - 610mm)
X10010	Small Base w/ Post & Rivet Kit	Metal sheathing w/minimum thickness of 24 gauge (0.024-in.)
X10011	Large Base w/ Post & Rivet Kit	Metal sheathing w/minimum thickness of 24 gauge (0.024-in.). Trapezoidal spacing of 8-in. to 20-in. (216 mm - 508 mm) in one-inch increments
X10030	Post w/ Base & Toggle Bolt Kit	Fastens through membrane, insulation & into metal sheathing, wood sheathing or concrete with a combined thickness of up to 5.5-in. (140 mm)
X10031	Post w/ Base & Toggle Bolt Kit	Fastens through membrane, insulation & into metal sheathing, wood sheathing or concrete with a combined thickness of > 5.5-in. up to 10.5-in. (140 mm - 267 mm)
X10020	Multi-Purpose Metal Sheathing, Wood and Concrete Roofing Post w/Base (no hardware included)	With Miller approved hardware, accommodates: metal sheathing w/minimum thickness of 24 gauge (0.024 in.). Trapezoidal spacing of 8-in. to 20-in. (216 mm - 508 mm) in one-inch increments. Plywood with minimum thickness 5/8-in. (15.9 mm) CDX. Concrete decking with minimum thickness of 6.5-in. (65 mm) & minimum concrete compressive strength of 3000 PSI (20.7 MPa)

Note: Additional models available for wood sheathing and concrete roofing applications



Temporary Anchors

SKU	Description
17D-1/	Steel twist-lock carabiner; 1-in. (25 mm) gate opening
18D-1/	Large, steel twist-lock carabiner; 2-in. (51 mm) gate opening.
18D-2-Z7/	Large, aluminum twist-lock carabiner; 2-in. (51 mm) gate opening
RA25-1/	Temporary, foldable roof anchor
RA30-1/	Reusable chain with 'O' ring; steep-pitched or flat roof
9065 /BK	Lightweight beam trolley adjusts to fit beam flanges from 3-in. (76 mm) to 4-1/2-in. (114 mm) wide. The adjustable trolley slides along with the worker to provide maximum mobility
496/	Miller Grip™ portable/reusable anchorage supports 5,000 lb. (2,268 kg) ultimate strength; for single user connection; 400 lbs. (181.4 kg) maximum capacity; color-coded green. Hole diameter – 3/4-in. (19 mm)
8816-14/	Lightweight, adjustable ShadowLite™ Beam Anchor – high-strength aluminum and bronze; 4.2 lbs. (2 kg); 3-in. to 14-in. (76 mm to 356 mm)
8815-12/	Lightweight, fixed ShadowLite™ Beam Anchor – stainless steel and high-strength aluminum; 7.7 lbs. (3.5 kg); 4-in. to 12-in. (102 mm to 305 mm)

All models shown include connectors with 3,600-lb. gate-strength

Permanent Roof Anchors



SKU	Description
RA40/	Double D™ permanent roof anchor is designed to provide two (2) D-ring anchorage points when securely installed on a wood roof sub-surface ridge peak; Complete with 8, 16d nails
RA41/	Single D™ permanent roof anchor is designed to provide one (1) D-ring anchorage point when securely installed on a wood roof sub-surface ridge peak or vertical wall; Complete with 8, 16d nails
RA45/	The Claw™ permanent roof anchor is designed to provide a single anchorage point when securely installed on a wood rafter or truss member; Fits wood sizes 2-in. x 4-in., 2-in. x 6-in., 2-in. x 8-in., 2-in. x 10-in. or 2-in. x 12-in. (51 mm x 102 mm, 51 mm x 152 mm, 51 mm x 203 mm, 51 mm x 254 mm or 51 mm x 305 mm)
416/	D-Bolt Anchor for up to 4-in. (102 mm) working thickness includes a 5/8-in. (16 mm) diameter bolt with lock washer and nut
417/	D-Bolt Anchor without hardware

Miller Swivel Anchors

- Provides freedom of movement with innovative swivel design that offers 360° D-ring rotation & 180° flip
- Options available for use in concrete and steel with 5,000-lb. (5K) and 10,000-lb. (10K) tensile strength
- Available in zinc-plated steel or stainless steel construction
- Rated for up to a 310-lb. (141 kg) user



SKU	Description
RACSWY050C	5K Zinc-Plated Swivel Anchor w/ Concrete Mounting Hardware
RACSWY050S	5K Zinc-Plated Swivel Anchor w/ Steel Mounting Hardware
RACSWYS100C-316	5K Stainless Steel Swivel Anchor w/ Concrete Mounting Hardware
RACSWYS100S-316	5K Stainless Steel Swivel Anchor w/ Stainless Steel Mounting Hardware
RACSWY100C	10K Zinc-Plated Swivel Anchor w/ Concrete Mounting Hardware
RACSWY100S	10K Zinc-Plated Swivel Anchor w/ Steel Mounting Hardware



Miller SkyORB™ Overhead Rotational Boom Anchor

- The pre-engineered SkyORB system replaces the need for very expensive, custom engineered, fixed overhead anchor systems
- Designed to eliminate the need for heavy and bulky counter weights by utilizing vehicle weight to safely secure the system in place
- Weighing only 1,050 lbs. (476 kg), it is significantly lighter than competitive systems on the market
- The adjustable telescoping mast allows the height of the system to be varied from 14 ft.–20 ft. (4 m–6 m) to accommodate lower roofs and overhead obstacles
- With a boom that rotates 360°, it can be easily positioned above the worker's head, minimizing free-fall distance and swing fall
- Patented energy-absorbing technology reduces forces on the system
- The modular design is easy to assemble and transport using only a forklift

SKU	Description	Weight*	Crate Dimensions* L x W x H
SORBSYS	Cable assembly kit, base, mast and boom	1,530 lbs. (694 kg)	121" x 40" x 19" (3 m x 1 m x 0.5 m)
SORBCABLEKIT	Shock absorber cable assembly replacement kit	8 lbs. (3.63 kg)	72" x 6" x 6" (1.83 m x 0.15 m x .015 m)

*Shipping weight displayed. Product weight is 1,050 lbs. (476 kg). Crate dimensions for shipping purposes.



Titan II ReadyRoofer® Fall Protection System

Lightweight, Full-Body Harness (T4500/UAK)

- Fully-adjustable, non-stretch harness w/tongue buckle leg straps
- Versatile, Reusable Roof Anchor with Attachment D-Ring (RA25-1/)
- Easily installs on steep-pitched or flat-surface roofs
 - Reusable roof anchor

Compact Trailing Rope Grab (8175/C)

- Durable, corrosion-resistant, stainless steel construction
- Attaches anywhere on the lifeline
- Lightweight, easy-to-use design with hands-free operation

Shock-Absorbing Lanyard (T6111-Z7/30INAF)

- 30-inch (0.8 m) polyester web lanyard with integral shock absorber and two locking snap hooks

High-Strength Rope Lifeline (300L-Z7/)

- 5/8-in. (16 mm) diameter copolymer rope with loop and locking snap hook

Waterproof Container

- Ideal for equipment storage; 5 gallons

SKU	Description
BRFKT50/50FTC	ReadyRoofer kit with 50-ft. (15 m) rope lifeline





Titan II B-Compliant™ Roof Kit

Lightweight, Full-Body Harness (T4200/UAK)

- Fully-adjustable, non-stretch harness w/mating buckle leg straps
- Versatile, Reusable Roof Anchor with Attachment D-Ring (RA25-1/)
- Easily installs on steep-pitched or flat-surface roofs
- Reusable roof anchor

Compact Trailing Rope Grab (8175/C)

- Durable, corrosion-resistant, stainless steel construction
- Attaches anywhere on the lifeline
- Lightweight, easy-to-use design with hands-free operation

Shock-Absorbing Lanyard (T6111-Z7/30INAF)

- 30-inch (0.8 m) polyester web lanyard with integral shock absorber and two locking snap hooks

High-Strength Rope Lifeline (300L-Z7/)

- 5/8-in. (16 mm) diameter copolymer rope with loop and locking snap hook

Waterproof Container

- Ideal for equipment storage; 5 gallons

SKU	Description
TRK2000-Z7/50FT	B-Compliant roof kit with 50-ft. (15 m) rope lifeline



HORIZONTAL LIFELINE SYSTEM



Miller SkyGrip™ Temporary Horizontal Lifeline System

- Lightweight systems available for steel and concrete applications
- Interchangeable stanchion posts enable systems for steel applications to be converted to concrete applications and systems for concrete applications to be converted for steel applications
- Above-the-beam quick installation for increased safety
- Stainless steel energy absorber minimizes fall clearance
- Tension indicator ensures proper tensioning critical to knowing fall clearance
- Continuous pass-through design

SKU/Length	Description
------------	-------------

Systems for Steel Applications

SGS18/60FT	60-ft. (9 m) system; up to 2 workers; fit beam flanges 4-18 in. (0.1 m to 0.5 m) wide and up to 2 1/4 in. (57 mm) thick
SGS18/120FT	120-ft. system; up to 4 workers; fit beam flanges 4-18 in. (0.1 m to 0.5 m) wide and up to 2 1/4 in. (57 mm) thick
SGS36/120FT	120-ft. system; up to 4 workers; fit beam flanges 12-36 in. (0.3 m to 0.9 m) wide and up to 2 1/4-3 3/8 in. (57 mm to 86 mm) thick

Systems for Concrete Applications – Attaches to rebar, concrete inserts or expansion bolt anchors

SGC/60FT	60-ft. (9 m) single-span system accommodates up to 2 workers
----------	--------------------------------------------------------------

Lifeline Kits

SG416/60FT	60-ft. (9 m) Kit with two 416 D-bolt anchors for up to 2 workers
SG8183-10/60FT	60-ft. (9 m) Kit with two 10-ft. 8183 cross arm straps for up to 2 workers
SG8815-12/60FT	60-ft. (9 m) Kit with two 8815-12 fixed beam anchors for up to 2 workers

System Components

SGXK	Energy absorber kit includes energy absorber, tension indicator and two anchor shackles
------	-----------------------------------------------------------------------------------------

Note: Longer systems available that will accommodate up to six workers

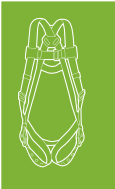
HORIZONTAL LIFELINE SYSTEM



Miller ShockFusion Horizontal Lifeline Kits for Rooftop Safety

A variety of do-it-yourself Miller ShockFusion Horizontal Lifeline (HLL) Kits for rooftop safety are now available, and offer the same innovative energy-absorbing design as a custom ShockFusion System. The new kits are available for simple straight line configurations and are rated for one to four users. All Miller ShockFusion™ HLL Kits are designed to minimize deflection in the lifeline while effectively managing system forces to maintain a safe connection to a variety of roof structures. The unique mounting system makes installation quick and easy while reducing labor costs.

A new online ShockFusion Selection Guide is now available for easy assembly of a kit to meet your exact application needs. www.millerfalltraining.com/shockfusionkits



Miller Xenon® Permanent Horizontal Lifeline Kits

Xenon kits provide do-it-yourself installation and feature patented stainless steel components that are easy-to-use and require minimal maintenance. Xenon stainless steel system kits are designed for up to two* workers. Kits include Xenon 4-in-1 shock absorber, intermediate bracket(s) (see chart), two stainless steel D-bolt anchorage-connectors, swageless fast-attach fitting, anchor shackle, thimble, cable clips, hardware and instruction manual. Xenon shuttles are sold separately.



SKU	System Length	Number of Intermediate Brackets
X00030	30-ft. (9.1 m)	0
X00060	60-ft. (18.3 m)	1
X00090	90-ft. (27.4 m)	2
X00120	120-ft. (36.6 m)	3
X00150	150-ft. (45.7 m)	4
SKU	Description	
1005709	Xenon Shuttle – Self-aligns for smooth automatic pass-through intermediate brackets; Dual-locking mechanism for added safety	

* Additional lengths available. Systems can accommodate up to four workers by adding a second Xenon shock absorber (Model 1014934).



DH-1/

Miller DuraHoist™ Safety Systems

Designed for manhole and confined space entry/retrieval and fall arrest applications. The modular design allows the use of components in various configurations and applications. Multiple winches and/or lifeline systems may be mounted as required. Lightweight, manageable components for easy storage, transport and set-up.

SKU	Description
DuraHoist™ Portable Confined Space System	
DH-1/	Four-piece system with ManHandler hoist/winch w/65-ft. (20 m) of 3/16-in. (5 mm) galvanized steel cable
DH-2/	Four-piece system without ManHandler hoist/winch
DuraHoist™ Portable Fall Arrest Posts	
DH-AP-1/	Portable Fall Arrest Post
DH-AP-3/	Rescue/Material Handling Davit Arm
DH-AP-9/	Portable I-beam anchor base
Miller Hoists/Winches and Mounting Brackets	
8442-Z7/65FT	ManHandler® personnel-rated hoist w/65 ft. (20 m) of 3/16-in. (5 mm) galvanized steel cable
MR50GB-Z7/50FT	MightEvac® SRL w/50 ft. (15 m) of 3/16-in. (5 mm) galvanized wire rope, mounting bracket and carabiner
DH-19-MILLER/	Complete mounting bracket assembly required to mount a Miller ManHandler Hoist/Winch or a Miller MightEvac SRL



MR50GCM-Z7/50FT

Miller Tripod w/MightEvac® Self-Retracting Lifeline/Emergency Retrieval Hoist

- Promotes quick and easy rescue with a 4:1 mechanical advantage (avg. speed of 25 ft. per minute)
- 7-ft. (2 m) tripod; lightweight, high-strength aluminum construction; adjustable legs; safety chain; rubber skid pads/serrated edge tripod feet
- Corrosion-resistant stainless steel/aluminum components
- Rated for up to a 310-lb. (141 kg) worker
- No annual factory recertification

SKU/Length	Description
MR50GC-Z7/50FT	MightEvac w/50 ft. (15 m) of 3/16-in. (5 mm) galvanized wire rope; 7-ft. (2 m) tripod; mounting bracket, pulley, carabiner and two heavy-duty equipment bags
MR50GCM-Z7/50FT	MightEvac w/ 50-ft. (15 m) of 3/16-in. (5 mm) galvanized wire rope; ManHandler Hoist w/ 65-ft. (20 m) of 3/16-in. (5 mm) galvanized wire rope; 7-ft. (2 m) tripod; mounting bracket, pulley, carabiner and two heavy-duty equipment bags

Models shown include connectors with 3,600-lb. gate strength



SEHW/75FT

Miller SafEscape® ELITE Controlled Descent/ Self-Rescue System

- Used for vertical and angular controlled descent from overhead cranes, towers, aerial lifts, oil derricks, platforms and other elevated work areas; approved for multiple descents
- Includes lifeline (specify length); rescue harness; cross-arm strap anchorage connector/carabiner; retrieval yoke; and carrying bag
- Standard lengths start at 50-ft. (15.2 m), increasing by 25-ft. (7.6 m) increments up to 300 ft. (91 m). Additional lengths available upon request.

SKU/Length	Description
SE/75FT	SafEscape ELITE RDD; also includes anchor slings and rescue bag
SEHW/75FT	SafEscape ELITE RDD w/Hoisting Wheel; also includes anchor slings and rescue bag
SEWPKT/75FT	SafEscape Wind Energy Kit includes Miller SafEscape ELITE RDD with hoisting wheel and ladder bracket, T-bar, edge protector, 3 anchor slings, 3 carabiners, pulley, adjustable rope anchor, rescue rope grab, accessory bag & kit bag
SEWPKTC/75FT	SafEscape Wind Energy Kit w/ Humidity-Resistant Storage Case includes SafEscape ELITE RDD w/ hoisting wheel and ladder bracket, T-bar, edge protector, 3 anchor slings, 3 carabiners, pulley, adjustable rope anchor, rescue rope grab and humidity-resistant storage case



Miller QuickPick Rescue Kits

- Simplified Rescue Systems – Premium or Standard Kit choices
- Out-of-the-bag solution for prompt rescue – no assembly required
- Quickly raise or lower a fallen worker to safety – avoid suspension trauma
- Professional rescue solution – enhances worker safety and corporate rescue plan

QuickPick Premium Kits – for users whose job does not normally include rescue

Kit includes: Backup braking system, pulleys, rope, rescue pole w/clip, pigtail rope control handle, carabiners, & cross-arm anchorage connector, Miller WristBandit™ Tool Lanyard, kit bag and pole bag



Watch a Video
YouTube

SKU/Length	Description	Maximum Capacity	Product Weight
QP/25FT	25-ft. (7.6 m) Working Length System	400 lbs. (181.4 kg)	22.9 lbs. (10.3 kg)
QP/50FT	50-ft. (15 m) Working Length System	400 lbs. (181.4 kg)	30.4 lbs. (13.7 kg)
QP/75FT	75-ft. (22.9 m) Working Length System	400 lbs. (181.4 kg)	37.9 lbs. (117.1 kg)
QP/100FT	100-ft. (30 m) Working Length System	400 lbs. (181.4 kg)	45.4 lbs. (20.5 kg)

All fall protection products meet all applicable OSHA, ANSI, and CSA standards.



GG0050

Miller GlideLoc® Vertical Height Access Ladder System Kits

GlideLoc Ladder Systems provide an innovative solution for vertical climbing that is easy to use, requires minimal maintenance and provides superior safety. The easy-climb GlideLoc Systems offer hands-free safety at height that ultimately increases worker mobility, safety and productivity.

- Unique design keeps hands free for climbing
- Engineered for smooth operation for ascending/descending
- Durable construction for extended service life
- Accommodates multiple workers

Kits are available in aluminum, galvanized or stainless steel construction and come complete with GlideLoc rail, gated top end-stop, gated bottom end-stop, ladder attachment brackets, and hardware

SKU/Length	Description
GG0020	20-ft. (6 m) GlideLoc system; requires 2 sections of 10-ft. (3 m) rail and 4 rung clamps
GG0030	30-ft. (9 m) GlideLoc system; requires 3 sections of 10-ft. (3 m) rail and 6 rung clamps
GG0040	40-ft. (12 m) GlideLoc system; requires 4 sections of 10-ft. (3 m) rail and 7 rung clamps
GG0050	50-ft. (15 m) GlideLoc system; requires 5 sections of 10-ft. (3 m) rail and 9 rung clamps
27441	Body Control I Fall Arrester – Locks into the rail in the event of a fall – Stainless steel and aluminum construction

Additional lengths available



Miller Vi-Go™ Ladder Climbing Safety System Kits

Vi-Go™ Ladder Climbing Safety Systems provide the ultimate in safety with continuous fall protection when climbing fixed ladders. Systems are available in easy-to-install kits or as a build-your-own option.

- Lower cost of ownership
- Option to cut cable lengths on site
- Accommodate up to four (4) workers at a time
- Select Automatic or Manual Personal Fall Arrester Cable

Vi-Go Systems with Automatic Pass-Through Kits include a top bracket assembly with shock absorber, a bottom bracket assembly with lifeline tensioner, 3/8-in. galvanized steel cable lifeline, all necessary hardware, automatic pass-through intermediate cable guides (when applicable) and instruction manual ViGo Automatic Pass-Through Cable Sleeve – Sold Separately.



SKU/Length	Description
VG/20FT	20-ft. (6 m) Vi-Go System
VG/30FT	30-ft. (9 m) Vi-Go system
VG/40FT	40-ft. (12 m) Vi-Go system
VG/50FT	50-ft. (15 m) Vi-Go system
VGCS-SC/	Automatic Pass-Through Cable Sleeve with integral swivel & carabiner

Other system kits are available in 10-ft. (3 m) increments up to 300 ft. (91 m), and then 50-ft. (15 m) increments up to 500 ft. (152 m). (Ex. To place an order or a Vi-Go system kit with 500-ft. (152 m) length cable, the SKU number is VG/500FT.)

ANCHORAGE CONNECTORS



FP03/6

FP02/6F



FP09/3

FP242/6



FP3730



FP83

Web/Cable Anchor Slings

- Designed to wrap around approved I-Beams or other structures for a secure attachment point for lanyards and self-retracting lifelines
- 400-lbs. (181.4 kg) maximum capacity

SKU	Description
FP02/6F	Cable Anchor Sling – PVC coated cable anchor sling with two Flemish eyes; 6-ft. (1.82 m). Additional lengths available.
FP09/3	Web Anchor Sling – Cross-Arm Strap with web loops on both ends 2-in. (55 mm) heavy-duty polyester web; 3-ft. (0.91 m)
FP242/6	Web Anchor Sling – Tiny'n Tough (T'nT) Anchor Sling is lightweight, small size and has exceptional strength – 3/4-in. (19 mm) web can be used without additional protective materials in concrete forming; 6-ft. (1.82 m). Additional lengths available.
FP03/6	Pass Through Anchor Sling – 2-in. (50 mm) heavy-duty polyester web with small D-ring which passes through the large D-ring to form loop around anchor; 6-ft. (1.82 m). Additional lengths available.

Permanent D-Bolt Anchor

SKU	Description
FP3730	Permanent D-Bolt Anchor with 1/2-in. (13 mm) Bolt on D-Ring

Carabiners

- Provide safe and secure closure
- Designed for easy operation even while wearing gloves
- Rated for 5,000 lbs. (22 kN) unless otherwise specified

SKU	Description
FP83	Steel double-locking carabiner with captive pin; 2-in. (51 mm) gate opening
FP86	Steel double-locking carabiner; 0.55-in. (14 mm) gate opening
FP88	Steel double-locking carabiner; 0.90-in. (23 mm) gate opening

All connectors include 3,600-lb. gate-strength.



ROOFING



FP90B

Temporary Roof Anchor

SKU	Description
FP90B	Disposable Residential Roof Anchor



FP90/25

North Roofing Kits

Roofer's Kit Contains:

- (1) manual rope grab with Soft Pack energy absorber for travel restraint
- (1) lightweight universal harness
- (2) disposable roof anchors with nails for temporary use
- (1) 5/8-in. (16 mm) co-polymer rope with thimble
- (1) carabiner
- (1) carrying bag

SKU	Description
FP90/25	Roofer's Kit; 25-ft. (8 m) lifeline; Universal (L/XL) harness
FP90/50	Roofer's Kit; 50-ft. (15 m) lifeline; Universal (L/XL) harness

Travel Restraint Kit Contains:

- (1) lightweight universal harness
- 4-ft. shock-absorbing lanyard
- 3-strand co-polymer rope with rope adjuster attached 5/8-in. (16 mm) diameter
- (2) roof brackets
- 4-in. (100 mm) spiral nails
- (1) waterproof bucket



FPD90/25TR

SKU	Description
FPD90/25TR	Travel Restraint Kit; 25-ft. (8 m) lifeline; Universal (L/XL) harness
FPD90/50TR	Travel Restraint Kit; 50-ft. (15 m) lifeline; Universal (L/XL) harness

BODY WEAR



FP81F/1DBA

North Rite-On™ Harnesses

- Integrated back and shoulder pad – conforms to the wearer's shape to provide all-day comfort
- Fast-action quick connect buckles – allows quick and easy donning
- Extended D-ring option – makes lanyard connection easier and safer
- Sweat wicking pad fabric – keeps wearers comfortable in hot conditions
- Tangle-free pad design – harness keeps its shape between use, aiding quick and easy donning
- Lightweight polyester webbing – offers superior UV and chemical resistance
- Universal size with full adjustability – one size fits most

SKU	Front D-rings	Side D-rings	Chest/ Leg Strap	Special Features
FP81F/1DBA	No	No	Quick-Connect	N/A
FP81F/1EDBA	No	No	Quick-Connect	Extended D-ring
FP81F/1DBA320	No	No	Quick-Connect	Attached energy absorber
FP81F/3DDA	No	Yes	Quick-Connect	N/A
FP81F/4DLA	Yes	Yes	Quick-Connect	N/A
FP81F/4EDLA	Yes	Yes	Quick-Connect	Extended D-ring



FP759/1DP

North Full Body Harnesses

- Back D-ring – For fall arrest applications (CSA class A)
- Adjustable leg and shoulder straps and sliding chest strap – allow wearers to find a safe and comfortable fit

SKU	Shoulder D-rings	Side D-rings	Chest/ Leg Strap	Special Features
FP759/1DP	No	No	Mating	N/A
FP759/5DP	Yes	Yes	Mating	N/A
FP759/1DGP	No	No	Mating/Tongue	Grommeted Legs
FP759/1EDP	No	No	Mating	Extended D-ring
FP759/1DPXL	No	No	Mating	Available in XL



FP721/1DP

North Cross Chest Harnesses

- Lightweight, slip-on convenience and the added feature of form fitting comfort Cross Chest Harness is the ultimate in fit and utility. Since there's no chest strap, comfort and mobility are enhanced while allowing access to pens and tools in chest pockets.

SKU	Front D-ring	Shoulder D-rings	Side D-rings	Leg Strap
FP721/1DP	No	No	No	Mating
FP722/2DP	Yes	No	No	Mating
FP722/4DP	Yes	No	Yes	Mating
FP722/6DP	Yes	Yes	Yes	Mating



North Durabilt Harnesses

- Back D-ring – For fall arrest applications
- Universal style with our one size fits most plus XL



FPD698/1DP

SKU	Shoulder D-rings	Side D-rings	Chest/Leg Strap
FPD698/1DP	No	No	Mating Buckles
FPD698/1DGP	No	No	Mating/Tongue
FPD698/3DGP	No	Yes	Mating/Tongue



FP1/303W



FP1/306W



FP1/306W

North DuraLite III

- Durable polymer housing
- Swiveling anchor prevents the webbing from twisting and tangling
- Dyneema lifeline is up to 15 times stronger than quality steel and up to 40% stronger than aramid fibers

SKU	Description	Length
FP1/303W	DuraLite III with Dyneema/polyester webbing and swivel snap hook with load indicator	10 ft. (3.0 m)
FP1/304W	DuraLite III with Dyneema/polyester webbing and swivel snap hook with load indicator	12 ft. (3.6 m)

All connectors include 3,600-lb. gate-strength.

North DuraLite II

- Durable polymer housing
- Swiveling anchor prevents the webbing from twisting and tangling
- Dyneema lifeline is up to 15 times stronger than quality steel and up to 40% stronger than aramid fibers

SKU	Description	Length
FP1/306W	DuraLite II with Dyneema/polyester webbing and double locking swivel snap hook with load indicator	20 ft. (6.0 m)

All connectors include 3,600-lb. gate-strength.

North Self-Retracting Lifelines

- Durable, compact construction
- Corrosion-resistant stainless steel lifeline
- Easy to operate

SKU	Description	Length
FP1/305S	3/16-in. (5 mm) stainless steel cable lifeline and locking swivel snap hook w/load indicator	16 ft. (4.8 m)
FP2/310S	3/16-in. (5 mm) stainless steel cable lifeline and swivel snap hook w/ load indicator	33 ft. (10.0 m)
FP2/315S	3/16-in. (5 mm) stainless steel cable lifeline and swivel double locking snap hook w/load indicator	50 ft. (15.2 m)

All connectors include 3,600-lb. gate-strength.

CONNECTING DEVICES



North Hybrid Soft Pak Energy-Absorbing Lanyard

North Hybrid Energy-Absorbing Lanyards

No more guessing. No more worries. One Hybrid Lanyard.

Now, for the first time to market, Honeywell has designed one lanyard that can be used by workers across weight classes, while still being CSA compliant. Honeywell Hybrid Energy-Absorbing Lanyards make choosing the right equipment a little easier, while reducing error and increasing safety!

- Eliminates the need to carry two types of lanyards in stock
- One solution for CSA compliance in both E4 and E6 weight classes
- One lanyard solution eliminates the risk of error and increases safety
- Full product line featuring Miller® and North® fall protection

Model Number	Hardware	Number of Legs	Harness Connection	Anchorage Connection	Standard Length
NHL-6FTSLS	Steel	One	Locking snap hook	Locking snap hook	6-ft (1.8 m)
NHL-6FTSLR	Steel	One	Locking snap hook	Locking rebar hook	6-ft (1.8 m)
NHL-6FTDLR	Steel	Two	Locking snap hook	Locking rebar hook	6-ft (1.8 m)
NHL-4FTSLS	Steel	One	Locking snap hook	Locking snap hook	4-ft (1.2 m)
NHL-4FTSLR	Steel	One	Locking snap hook	Locking rebar hook	4-ft (1.2 m)



When a lanyard is misused, serious injuries may result. Honeywell Hybrid Energy-Absorbing Lanyards make choosing the right equipment a little easier, while reducing error and increasing safety.



Class E4
100 lbs - 254 lbs

Watch a Video
YouTube



HYBRID
Combines E4 and E6
100 lbs. - 386 lbs



Class E6
200 lbs - 386 lbs



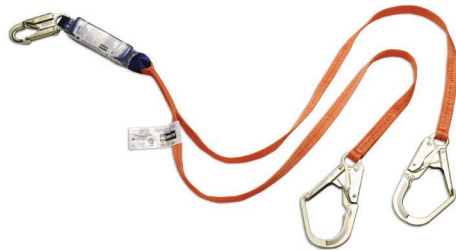
FP289299/

North Decelerator Shock-Absorbing Lanyard

- Simple design limits complexity and keeps down cost

SKU	Number of Legs	CSA Class	Unit Connector	Harness End Connector
FP289299/	2	E4	Snap Hook	Small Rebar Hooks
FP28829/	1	E4	Snap Hook	Small Rebar Hook
FP28822/	1	E4	Snap Hook	Snap Hook
FP2882G/	1	E4	Snap Hook	Large Rebar Hook

Small Locking Rebar Hook (1 3/4" 44 mm gate opening); Large Locking Rebar Hook (2 1/4" 57 mm) All connectors include 3,600-lb. gate-strength.



FP2562GG/

North Soft Pak Shock-Absorbing Lanyard

- Designed with a specially-woven inner core that has a controlled tearing action
- Lightweight polyester webbing offers superior UV and chemical resistance

SKU	Number of Legs	CSA Class	Unit Connector	Harness End Connector
FP2562GG/	2	E4	Snap Hook	Large Rebar Hook
FP26322G/	1	E4	Snap Hook	Snap Hook
FP22329/	1	E4	Snap Hook	Small Rebar Hook
FP2AE2GG/6	2	E6	Snap Hook	Large Rebar Hook

Small Locking Rebar Hook (1 3/4" 44 mm gate opening); Large Locking Rebar Hook (2 1/4" 57 mm) All connectors include 3,600-lb. gate-strength.



FPD29811/6

North Durabilt Shock-Absorbing Lanyard

- Specially-woven shock-absorbing inner core smoothly expands to reduce fall arrest forces
- Unique warning flag provides visual proof that a lanyard has been involved in a fall and must be removed from service
- Heavy-duty tubular outer jacket serves as a back-up lanyard

SKU	Number of Legs	CSA Class	Unit Connector	Harness End Connector
FPD29819/6	One	E4	Small locking rebar hook	Locking snap hook
FPD29811/6	One	E4	Locking Snap hook	Locking snap hook
FPD29810/6	One	E4	Large rebar hook	Locking snap hook
FPD2991GG/6	Two	E4	Small locking rebar hook	Locking snap hook

All connectors include 3,600-lb. gate-strength.

ROPE GRABS AND VERTICAL LIFELINES



Rope Grabs and Vertical Lifelines

- Trails user without manipulation
- Stops on lifeline even when the panic lock is held open

SKU	Description
FP541	Automatic rope grab with panic lock feature for use with 5/8-in. (16 mm) synthetic rope
FP542	Automatic rope grab with panic lock feature with 2-ft. (0.6 m) web lanyard with energy absorber and snap hook. For use with 5/8-in. (16 mm) synthetic rope.
FP543	Automatic rope grab with panic lock feature with 2-ft. (0.6 m) web lanyard and snap hook. For use with 5/8-in. (16 mm) synthetic rope.
FP571/8	Automatic cable grab for vertical system for use with 5/16-in. (8 mm) cable. Includes carabiner.
FP571/10	Automatic cable grab for vertical system for use with 3/8-in. (10 mm) cable. Includes carabiner.
FP16E/PS50	Co-polymer blend rope lifeline with one end spliced with steel thimble; 5/8-in. (16 mm) diameter; 50-ft. (15 m). Also available in 25-ft. (8 m) and 100-ft. (30 m) lengths

CONFINED SPACE & RESCUE/DESCENT



FP6671

Bantamlift™ Davit System

- Components are made of strong aluminum alloy (except for bases)
- Rated for working loads up to 450 lbs. (204 kg)
- Provide a proof-tested 5,000 lbs. (22 kN) anchor (in most configurations) or at least a 2:1 safety factor when used with approved fall arrest devices
- Booms reach up to 48-in. (1.2 m)
- Various masts to meet your requirements

SKU	Description
FP6660/00	Davit fixed base
FP6661	Ladder davit base
FP6660/01	Davit concrete sleeve base core
FP6660/02	Davit concrete sleeve with flange
FP6662/00	Davit wall mount base
FP6663/00	Portable davit base
FP6669/00	Davit base cap
FP6669/01	Davit base flush mount tube cap
FP6670/24	Davit mast 12-in. to 24-in. (305 to 610 mm)
FP6670/48	Davit mast 26-in. to 48-in. (660 to 1219 mm)
FP6671	Ladder davit fixed 12-in. (305 mm)
FP6680/24	Davit boom 12-in. to 24-in. (305 to 610 mm)
FP6680/36	Davit boom 26-in. to 36-in. (660 to 914 mm)
FP6680/48	Davit boom 36-in. to 48-in. (914 to 1219 mm)





FP2/415SR



FP2/715SR

North Self-Retracting Lifeline with Rescue Winch

The integrated retrieval winch can raise or lower a person in an emergency situation. This 3-way SRL can be switched from fall arrest mode to retrieval mode to speed rescue of an injured worker.

SKU	Description
FP2/415SR	50-ft (15 m) of 3/16-in. (5 mm) stainless steel cable with swivel load indicating snap hook
FP6610/15	Mounting bracket for FP2 series SRL and winch housing types

All connectors include 3,600-lb. gate-strength.

North Personnel Winches

The same robust durability and strength of the North 3-way SRL is found in the Personnel Winch. It can handle a variety of tasks including confined space entry/egress and rescue work; swivel snap hook equipped

SKU	Description
FP2/715SR	50-ft. (15 m) of 3/16-in. (5 mm) stainless steel cable with swivel snap hook
FP3/733SR	110-ft. (33 m) of 3/16-in. (5 mm) stainless steel cable with swivel snap hook
FP6610/15	Mounting bracket for FP2 series SRL and winch housing types
FP6610/33	Mounting bracket for FP3 series winch housing types

All connectors include 3,600-lb. gate-strength.

North Complete Confined Space Rescue Kits

SKU	Description
FP66/415SR	Includes Self-Retracting Lifeline with 50-ft. (15 m) of 3/16-in. (5 mm) stainless steel cable and snap hook with load indicator; 7-ft. (2 m) tripod; mounting bracket and storage bag
FP66/715SR	Includes Hoist/Winch with 50-ft (15 m) of 3/16-in. (5 mm) stainless steel cable and snap hook with load indicator; 7-ft. (2 m) tripod; mounting bracket and storage bag

All connectors include 3,600-lb. gate-strength.





Miller Engineered Solutions

- Site Survey Fall Hazard Assessment – Miller Engineered Solutions uses a consultative approach to identify the safety hazards associated with fall exposures.
- Design – We offer complete engineering, drafting and design services, working in concert with your team to ensure all your needs and requirements are met.
- Supply of System Components – We supply all system components, PPE and custom fabrications, designed specifically for system attachment to existing or designed structures.



Honeywell Safety Suite/Worker Compliance

- Worker Compliance, a software that is part of Honeywell Safety Suite, is a cloud-based tool that gives you real-time visibility – in one centralized interface – on your workers' readiness to do safe work.
- Available from a web browser, whenever you need it – you can prevent compliance issues that cause costly downtime for your workers and equipment. All while managing enterprise risk and building worker confidence.
- In addition to creating value for the enterprise, Worker Compliance creates value for you as a safety manager, freeing you up from burdensome administration. So you can spend more time making workers safe – instead of making spreadsheets

Honeywell Fall Prevention and Protection Training



- Experienced instructors; live demonstrations and hands-on training
- Online Booking Tool enables customers to review and reserve available open enrolment courses with a few simple clicks: www.millerfallprotection.com
- Regional Training Centers in Edmonton, Calgary, Toronto, Montreal and Vancouver
- Oil Sands Safety Association (OSSA)-approved training programs address site-specific variables and performance requirements of fall prevention and protection
- Save \$\$\$ when you book Qualified Person & Qualified Inspector of Fall Protection Equipment as a combo
- Each participant will receive a certificate after successful course completion