



Catalog No. UJ2014D

Weatherly No. 090

2014

Supersedes Cat. No. UJ2011D

***Universal Joint
Dimensional Reference Guide***

Innovative Drivetrain Solutions®



GOLD Universal Joints

Neapco® Premium Quality Universal Joints

- 1310 - 1550 Universal Joint Series
- Lubricated for Life - High Performance Sealing System
- Meets OEM Performance Standards
- Covered by Neapco's "Extended Warranty"
- Backed by Neapco's Superior Customer Service

IMPORTANT INFORMATION

Issue Date 2013
Weatherly No. 090
Catalog UJ2014D

Please read the following important information before using this Catalog:

ALWAYS CONSULT AND REVIEW THE ORIGINAL MANUFACTURERS INSTRUCTION MANUAL(S) TO DETERMINE THE APPROPRIATE INSTALLATION PROCEDURES FOR A PARTICULAR VEHICLE APPLICATION.

FOR THE LATEST INFORMATION ALWAYS REFER TO THE NEAPCO eCATALOG

IMPORTANT NOTICE

The data listed in this catalog is correct to the best of our knowledge, having been compiled from sources of information which we believe to be reliable. However, we cannot assume any responsibility for possible error. Parts included in this catalog are manufactured for use only in the intended O.E.M. vehicle application(s). Installation and use in a vehicle that has been modified to any degree that is not consistent and equivalent to O.E.M. production specifications for the vehicle application(s) may result in reduced life or possible part failure.

WARRANTY

We warrant to the original purchaser all new parts to be free of defects in material and workmanship when such parts are used on applications which have been approved by our Engineering Department, but not against damage caused by negligence or abuse.

Our obligations and liabilities under this Warranty shall be limited to replacing or repairing such parts if found upon inspection by us to be defective.

OUR WARRANTIES ARE STRICTLY LIMITED TO THOSE JUST STATED. WARRANTIES OF MERCHANTABILITY OR FITNESS FOR A PARTICULAR PURPOSE AND ALL IMPLIED WARRANTIES ARISING FROM A COURSE OF DEALING, USAGE OR TRADE, BY STATUTE OR OTHERWISE ARE HEREBY DISCLAIMED, and in the event of breach of any warranty or any legal action brought by buyer based on alleged negligence or other tortious conduct of us, buyer's sole and exclusive remedy will be replacement of defective material as stated above. WE WILL NOT BE LIABLE FOR INCIDENTAL, CONSEQUENTIAL OR CONTINGENT DAMAGES OF ANY KIND. We make no warranty whatsoever with respect to component parts or accessories not supplied by us.

Copyright© 2013 Neapco, LLC Pottstown, Pennsylvania.
All rights reserved. No part of this book can be reproduced in any form
without specific written permission from the copyright owner.
Produced in The United States of America.

TABLE OF CONTENTS

Section	Page Number
Conversion U-Joints Listed by Part Number	1
Round Bearing Cap U-Joints Listed by Bearing Diameter	3
Wing and Block U-Joints Listed By Size	10
All U-Joints Listed by Part Number	13

HOW TO USE THIS CATALOG

For Conversion U-Joints

Measure Round Bearing Diameter and Yoke Lock-up, or if the Series is know, reference U-Joint Type to determine the two different Series to be converted.

For Round Bearing Cap U-Joints

Measure Round Bearing Diameter and Yoke Lock-up to determine the correct part number.

For Wing and Block U-Joints

Measure the CL to CL value (centerline to centerline), Round Bearing Diameter (where applicable) and Yoke Lock-up to determine the correct part number.

U-Joints reference by Part Number

Use this numerical reference by part number to confirm dimensional attributes for each part number.

Bearing Type Abbreviations

Round bearing Types

- ISR - Inside Snap Ring
- OSR - Outside Snap Ring

Wing Bearing Types

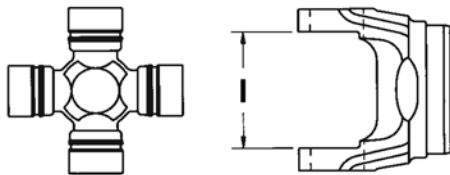
- DWT - Delta Wing Threaded
- HWD - High Wing Drilled
- LWD - Low Wing Drilled
- LWT - Low Wing Threaded

UNIVERSAL JOINT IDENTIFICATION

Round Inside Lock-Up/Snap Ring (ISR)

This universal joint design uses round bearing cups with a snap ring groove on the outside diameter of the bearings and machined flat surfaces on the inside of the yoke ears. It is easier to measure the lock-up for this style by measuring the yoke from inside ear to inside ear. If the yoke is not available, lock-up can be measured on the universal joint itself.

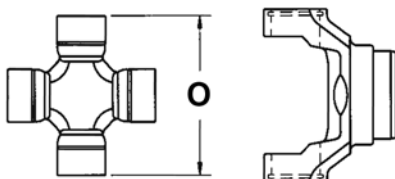
1. Assemble bearing cups onto cross.
2. Install snap rings in bearing grooves.
3. Remove rubber seals or clamp bearing cups with a C-clamp or vise.
4. Measure across the outside of the two installed snap rings facing one another to obtain the lock-up dimension.
5. Measure the outside diameters of the bearing cups. Conversion joints and some OE applications may have two different diameter bearing cups.
6. For conversion type universal joints repeat steps 1-5 for the other leg of the universal joint.



Round Outside Lock-Up/Snap Ring (OSR)

This universal joint design uses round bearing cups with a flat ground back surface. The cups are retained in the yoke by a snap ring that locks into a groove in the yoke crosshole.

1. Assemble bearing cups onto cross.
2. Remove rubber seals or clamp bearing cups with a C-clamp or vise.
3. Measure across the outside of the two bearing cups.
4. Measure outside diameters of the bearing cups. Conversion joints and some OE applications use two different diameter bearing cups.
5. For conversion type universal joints repeat steps 1-4 for the other leg of the universal joint.



Plastic Injection

This style of lock-up was used in OEM Saginaw & AAM applications. When disassembled, OE joints are replaced with standard universal joint kits using round inside lock-up/snap rings.

U-Bolt & Bearing Strap

These two types of universal joints use round bearings secured in the yoke ears by a U-shaped bolt or strap that fits over the bearing cups. Measure in the same manner as round ISR or OSR.

Round w/Plate

These universal joint kits use a flat plate welded to the back surface of the bearing cups. Two bolts retain each bearing in the yoke ears. Heavy Duty series using this style are 1610, 1710, 1760, and 1810. Basic reference dimensions required to identify each one are listed below. Measure between the inside surfaces of the retainer plates or across the outside surfaces of the yoke ears.

LOCK-UP	SERIES	KIT NO.
5.312	1610	4-0279
6.094	1710	5-0280
7.000	1760	6-0407
7.547	1810	6-0281

Mechanics Design (Wing Bearings)

This universal joint design uses a block- or wing-style bearing cup that locates in a flat flange-type yoke with a tongue and groove arrangement. Identify the bearing shape on the previous diagram. Some applications use two different bearing types.

1. Assemble bearing cups onto cross.
2. Clamp the bearings with C-clamp or vise.
3. Measure across two opposite bearings, in the same manner as round outside lock-up/snap ring to obtain the yoke lock-up.
4. Measure the cap holes CL to CL (centerline to centerline) to identify the series.
5. Identify the proper cup (Bearing Type) DWT, HWD, LWD, or LWT.



eCatalog

The Neapco enhanced electronic catalog has been created using the latest cloud based technologies using the AAIA (Automotive Aftermarket Industry Association) ACES & PIES Standards.

For more information please go to: <http://www.aftermarket.org/technology/aces.aspx>.

Navigation to the eCatalog can be obtained by simply going to Neapco.com <http://www.neapco.com/>, selecting the Aftermarket Site, then selecting Catalogs from the tab selection.

Clicking on the “**Visit the Neapco eCatalog**” will open a new browser window and present three options:

- ***Search by Part #*** (*Neapco, OEM, or Interchange*)
- ***Search by Vehicle Application Lookup*** (*Make, Year, Model*)
- ***Search by Product Lookup*** (*Part Type*)

Since electronic catalogs are not bound by the format constraints of paper, it's important to think of these as product groupings. Specifically:

- **Application Look-Up** – Parts having specific Y/M/M fitment information.
- **Non-Application Look-Up** - Full specifications & interchange.

Updates – Possibly the single biggest benefit of electronic lookup is that it has the capability of real time updates. What is displayed in the Neapco eCatalog is the exact same data that is being authored in REAL Time.

What does that mean to the end user? When we add, change, or discontinue, a part number it changes instantly in the Neapco eCatalog. While print is not dead, those using print face a definite business disadvantage from those who use electronic information. Making the transition to the electronic information age is something we encourage everyone to consider.

Featured Products - This screen will preview the latest and most innovative products offered by Neapco. Clicking on the link in one of the rotating products will display; Image; Buyers Guide; Specifications; and Interchange Information. In addition where available, Product Instructions, and Product Brochures may also be listed.

CONVERSION U-JOINTS BY PART NUMBER

Part Number	Bearing Dia.	Lock-up Yoke	Bearing Type	Lube Fitting	Cap Holes CL to CL	Converts Part#	U-Joint Type
1-0134	1.063 1.063	3.219 3.622	ROUND-OSR	1 Cross		1-0153 to 2-4800	SPICER 1310 / SPICER 1330
1-0248	1.000 1.063	1.717 2.438	ROUND-ISR / OSR	1 Cross		1-0105 to 1-0443	SPICER 1110 / SPICER 1210
1-0445	1.063 1.063	2.343 3.219	ROUND-ISR / OSR	1 Cross		1-0350 to 1-0153	SPICER 1310 SPEC / SPICER 1310
1-0616	0.938 0.969	1.500 1.443	ROUND-ISR	1 Cross		1-0170 to 1-1475	SPICER 1000 / PTO ROCKWELL L6N
1-3650	1.000 1.063	2.342 3.219	ROUND-ISR / OSR	1 Cross		1-3600 to 1-0153	MECHANICS 2RL / SPICER 1310
1-5349	1.063 1.125	3.219 3.622	ROUND-OSR	1 Cross		1-0153 to 2-4900	SPICER 1310 / CLEVELAND P55-55-675
2-0291	1.063	3.219 3.125	ROUND-OSR / WING-LWT	1 Bearing	1.312	1-0153 to 1-2171	SPICER 1310 / MECHANICS 2CL
2-0355	1.063 1.126	3.622 2.622	ROUND-OSR / ISR	1 Cross		2-4800 to 2-1175	SPICER 1330 / DETROIT 7290
2-0355G	1.063 1.126	3.622 2.622	ROUND-OSR / ISR	None		2-4800 to 2-1175	SPICER 1330 / DETROIT 7290
2-0527	1.078 1.126	2.125 2.622	ROUND-ISR	1 Bearing		1-6301 to 2-1175	DETROIT 7260 / DETROIT 7290
2-0599	1.063 1.078	3.622 2.125	ROUND-OSR / ISR	1 Cross		2-4800 to 1-6301	SPICER 1330 / DETROIT 7260
2-1153	1.125 1.188	2.556 3.622	ROUND-ISR / OSR	1 Cross		2-3011 to 2-0053	SPICER 1350 / MECHANICS 3R
2-1435	1.188 1.188	3.622 4.187	ROUND-OSR	None		2-0053 to 2-0054	SPICER 1350 / SPICER 1410
2-1569	1.063 1.125	3.622 2.556	ROUND-OSR / ISR	1 Cross		2-4800 to 2-3011	SPICER 1330 / MECHANICS 3R
2-1569G	1.063 1.125	3.622 2.556	ROUND-OSR / ISR	None		2-4800 to 2-3011	SPICER 1330 / MECHANICS 3R
2-2518	1.063 1.125	3.219 2.125	ROUND-OSR / ISR	1 Cross		1-0153 to 1-5800	SPICER 1310 / MECHANICS 2 1/2 RL
2-3049	1.125 1.125	2.556 3.622	ROUND-ISR / OSR	1 Cross		2-3011 to 2-4900	CLEVELAND P55-55-675 / MECHANICS 3R
2-3050	1.063 1.188	3.622 3.622	ROUND-OSR	1 Cross		2-4800 to 2-0053	SPICER 1330 / SPICER 1350
2-3100	1.063 1.078	3.219 2.125	ROUND-OSR / ISR	1 Cross		1-0153 to 1-6301	SPICER 1310 / DETROIT 7260
2-3190	1.188 1.232	4.187 3.000	ROUND-OSR / ISR	1 Cross		2-0054 to 3-0056	SPICER 1410 / DETROIT 5380
2-4953	1.125 1.188	3.622 3.622	ROUND-OSR	1 Cross		2-4900 to 2-0053	CLEVELAND P55-55-675 / SPICER 1350
2-5374	1.063 1.063	2.188 3.219	ROUND-ISR / OSR	1 Cross		1-0174 to 1-0153	SPICER 1310WJ / SPICER 1310
3-3130	1.063 1.125	3.219 2.556	ROUND-OSR / ISR	1 Cross		1-0153 to 2-3011	SPICER 1310 / MECHANICS 3R
3-3131	1.063 1.126	3.219 2.622	ROUND-OSR / ISR	1 Cross		1-0153 to 2-1175	SPICER 1310 / DETROIT 7290
3-3133	1.125 1.126	2.556 2.622	ROUND-ISR	1 Cross		2-3011 to 2-1175	SAGINAW S44 / DETROIT 7290
3-3140	1.063 1.188	3.219 3.622	ROUND-OSR	1 Cross		1-0153 to 2-0053	SPICER 1310 / SPICER 1350

CONVERSION U-JOINTS BY PART NUMBER

Part Number	Bearing Dia.	Lock-up Yoke	Bearing Type	Lube Fitting	Cap Holes CL to CL	Converts Part#	U-Joint Type
6-0324	1.937	7.547 8.250	ROUND-W/PLATE / WING-HWD	2 Cross	2.812	6-0281 to 6-9016	SPICER 1810 / MECHANICS 9C
6-0326	2.186	8.094 8.250	ROUND-W/PLATE / WING-HWD	1 Cross	2.812	6-0308 to 6-9016	SPICER 1880 / MECHANICS 9C

LISTING BY ROUND BEARING CAPS

Part Number	Bearing Dia.	Lock-up Yoke	Bearing Type	Lube Fitting	Cap Holes CL to CL	Converts Part#	U-Joint Type
1-0475	0.750 0.750	1.906 1.906	ROUND-OSR	None			NEAPCO 0400 STEERING
1-0028	0.788 0.788	1.496 1.496	ROUND-ISR	None			NISSAN, TOYOTA
1-0011	0.788 0.788	2.260 2.260	ROUND-OSR	1 Bearing			TOYOTA
1-0121	0.866 0.866	2.126 2.126	ROUND-OSR	1 Cross			PTO METRIC B&P SERIES 1
1-1001	0.866 0.866	2.157 2.157	ROUND-OSR	1 Cross			PTO METRIC WALTERSCHEID SERIES 2100
1-0430	0.867 0.867	1.400 1.400	ROUND-ISR	1 Bearing			NISSAN, SUBARU, TOYOTA staked replacement
1-1604	0.886 0.886	1.482 1.482	ROUND-ISR	1 Bearing			MAZDA
1-0221	0.937 0.937	2.413 2.413	ROUND-OSR	1 Cross			PTO METRIC B&P SERIES 2
1-0103	0.938 0.938	1.500 1.500	ROUND-ISR	None			SPICER 1000 STEERING
1-0170	0.938 0.938	1.500 1.500	ROUND-ISR	1 Cross			SPICER 1000
1-0170NPL	0.938 0.938	1.500 1.500	ROUND-ISR	None			SPICER 1000
1-0171	0.938 0.938	1.500 1.500	ROUND-ISR	1 Bearing			SPICER 1000
1-0172	0.938 0.938	1.500 1.500	ROUND-ISR	None			SPICER 1000
1-0300	0.938 0.938	2.412 2.412	ROUND-OSR	1 Bearing			SPICER 1100
1-0616	0.938 0.969	1.500 1.443	ROUND-ISR	1 Cross		1-0170 to 1-1475	SPICER 1000 / PTO ROCKWELL L6N
1-0431	0.947 0.947	1.900 1.900	ROUND-ISR	1 Bearing			BMW, MAZDA staked replacement
1-1475	0.969 0.969	1.443 1.443	ROUND-ISR	1 Cross			PTO ROCKWELL L6N
1-0061	0.969 0.969	1.693 1.693	ROUND-ISR	1 Cross			MECHANICS 1 1/2 RL
1-1606	0.985 0.985	1.717 1.717	ROUND-ISR	1 Bearing			MAZDA
1-0027	0.985 0.985	1.736 1.736	ROUND-ISR	1 Bearing			NISSAN, SUBARU
1-1557	0.985 0.985	2.517 2.517	ROUND-OSR	1 Bearing			DODGE, MITSUBISHI, SUZUKI
1-1516	0.985 0.985	3.027 3.027	ROUND-OSR	1 Cross			CHRYSLER, MITSUBISHI
1-2134	1.000	2.342 3.125	ROUND-ISR / WING-LWT	1 Cross	1.312		MECHANICS 2 CRL
2-2700	1.000	2.342 3.125	ROUND-OSR / WING-LWD	1 Bearing	1.312		MECHANICS 2CRL
1-0105	1.000 1.000	1.717 1.717	ROUND-ISR	1 Cross			SPICER 1110
1-1875	1.000 1.000	2.342 2.342	ROUND-ISR	1 Cross			PTO NEAPCO 1800

LISTING BY ROUND BEARING CAPS

Part Number	Bearing Dia.	Lock-up Yoke	Bearing Type	Lube Fitting	Cap Holes CL to CL	Converts Part#	U-Joint Type
1-3600	1.000 1.000	2.342 2.342	ROUND-ISR	1 Cross			MECHANICS 2RL
1-0248	1.000 1.063	1.717 2.438	ROUND-ISR / OSR	1 Cross		1-0105 to 1-0443	SPICER 1110 / SPICER 1210
1-3650	1.000 1.063	2.342 3.219	ROUND-ISR / OSR	1 Cross		1-3600 to 1-0153	MECHANICS 2RL / SPICER 1310
1-2173	1.000 1.125	2.342 2.342	ROUND-ISR	1 Cross			MECHANICS 2RL
1-0013	1.024 1.024	1.843 1.843	ROUND-ISR	1 Bearing			TOYOTA
1-0012	1.024 1.024	2.200 2.200	ROUND-ISR	None			TOYOTA
2-0382	1.024 1.024	2.756 2.756	ROUND-OSR	1 Bearing			SUZUKI
2-0506	1.044 1.044	1.988 1.988	ROUND-ISR	1 Bearing			KIA
2-0291	1.063	3.219 3.125	ROUND-OSR / WING-LWT	1 Bearing	1.312	1-0153 to 1-2171	SPICER 1310 / MECHANICS 2CL
2-0456	1.063 1.063	1.640 1.640	ROUND-ISR	None			SPICER 1210WJ
1-0449	1.063 1.063	1.930 1.930	ROUND-ISR	1 Bearing			INFINITI, NISSAN
1-0174	1.063 1.063	2.188 2.188	ROUND-ISR	1 Cross			SPICER 1310WJ
1-0175	1.063 1.063	2.188 2.188	ROUND-ISR	1 Bearing			SPICER 1310WJ
2-5374	1.063 1.063	2.188 3.219	ROUND-ISR / OSR	1 Cross		1-0174 to 1-0153	SPICER 1310WJ / SPICER 1310
1-0350	1.063 1.063	2.343 2.343	ROUND-ISR	1 Cross			SPICER 1310 SPEC
1-0445	1.063 1.063	2.343 3.219	ROUND-ISR / OSR	1 Cross		1-0350 to 1-0153	SPICER 1310 SPEC / SPICER 1310
1-5900	1.063 1.063	2.380 3.219	ROUND-ISR / OSR	1 Cross			CLEVELAND S55-55-2
1-0443	1.063 1.063	2.438 2.438	ROUND-OSR	1 Bearing			SPICER 1210
1-0439	1.063 1.063	2.646 2.646	ROUND-OSR	1 Bearing			SATURN
1-0321	1.063 1.063	2.756 2.756	ROUND-OSR	1 Cross			PTO METRIC WALTERSCHEID SERIES I
2-1203	1.063 1.063	2.781 3.622	ROUND-ISR / OSR	1 Cross			CLEVELAND P55-55-2
1-0421	1.063 1.063	2.937 2.937	ROUND-OSR	1 Cross			PTO METRIC B&P SERIES 4
1-0005	1.063 1.063	2.938 2.938	ROUND-OSR	1 Bearing			SPICER 1300
2-0520	1.063 1.063	3.145 3.145	ROUND-OSR	1 Cross			HYUNDAI
1-0153	1.063 1.063	3.219 3.219	ROUND-OSR	1 Cross			SPICER 1310
1-0153G	1.063 1.063	3.219 3.219	ROUND-OSR	None			SPICER 1310

LISTING BY ROUND BEARING CAPS

Part Number	Bearing Dia.	Lock-up Yoke	Bearing Type	Lube Fitting	Cap Holes CL to CL	Converts Part#	U-Joint Type
1-0154	1.063 1.063	3.219 3.219	ROUND-OSR	1 Bearing			SPICER 1310
1-0200	1.063 1.063	3.219 3.219	ROUND-OSR	1 Cross			SPICER 1280
1-0278	1.063 1.063	3.219 3.219	ROUND-OSR	1 Cross			SPICER 1310 CV
1-0134	1.063 1.063	3.219 3.622	ROUND-OSR	1 Cross		1-0153 to 2-4800	SPICER 1310 / SPICER 1330
2-4800	1.063 1.063	3.622 3.622	ROUND-OSR	1 Cross			SPICER 1330
2-4800G	1.063 1.063	3.622 3.622	ROUND-OSR	None			SPICER 1330
2-4801	1.063 1.063	3.622 3.622	ROUND-OSR	1 Bearing			SPICER 1330
2-3100	1.063 1.078	3.219 2.125	ROUND-OSR / ISR	1 Cross		1-0153 to 1-6301	SPICER 1310 / DETROIT 7260
2-0599	1.063 1.078	3.622 2.125	ROUND-OSR / ISR	1 Cross		2-4800 to 1-6301	SPICER 1330 / DETROIT 7260
1-4635	1.063 1.125	2.380 3.219	ROUND-ISR / OSR	1 Cross			CLEVELAND S55-55-675
2-4900	1.063 1.125	2.781 3.622	ROUND-ISR / OSR	1 Cross			CLEVELAND P55-55-675
2-4900G	1.063 1.125	2.781 3.622	ROUND-ISR / OSR	None			CLEVELAND P55-55-675
2-2518	1.063 1.125	3.219 2.125	ROUND-OSR / ISR	1 Cross		1-0153 to 1-5800	SPICER 1310 / MECHANICS 2 1/2 RL
3-3130	1.063 1.125	3.219 2.556	ROUND-OSR / ISR	1 Cross		1-0153 to 2-3011	SPICER 1310 / MECHANICS 3R
1-5349	1.063 1.125	3.219 3.622	ROUND-OSR	1 Cross		1-0153 to 2-4900	SPICER 1310 / CLEVELAND P55-55-675
2-1569	1.063 1.125	3.622 2.556	ROUND-OSR / ISR	1 Cross		2-4800 to 2-3011	SPICER 1330 / MECHANICS 3R
2-1569G	1.063 1.125	3.622 2.556	ROUND-OSR / ISR	None		2-4800 to 2-3011	SPICER 1330 / MECHANICS 3R
3-3131	1.063 1.126	3.219 2.622	ROUND-OSR / ISR	1 Cross		1-0153 to 2-1175	SPICER 1310 / DETROIT 7290
2-0355	1.063 1.126	3.622 2.622	ROUND-OSR / ISR	1 Cross		2-4800 to 2-1175	SPICER 1330 / DETROIT 7290
2-0355G	1.063 1.126	3.622 2.622	ROUND-OSR / ISR	None		2-4800 to 2-1175	SPICER 1330 / DETROIT 7290
3-3140	1.063 1.188	3.219 3.622	ROUND-OSR	1 Cross		1-0153 to 2-0053	SPICER 1310 / SPICER 1350
2-3050	1.063 1.188	3.622 3.622	ROUND-OSR	1 Cross		2-4800 to 2-0053	SPICER 1330 / SPICER 1350
2-2480	1.063 1.260	3.859 2.992	ROUND-OSR	1 Cross			WALTERSCHEID 2480
1-1275	1.064 1.064	1.819 1.819	ROUND-ISR	1 Cross			PTO ROCKWELL L12N
2-4805	1.066 1.066	3.622 3.622	ROUND-OSR	None			VISTEON 1330XC
3-0488	1.066 1.066	3.787 3.787	ROUND-OSR	None			VISTEON SPECIAL staked replacement

LISTING BY ROUND BEARING CAPS

Part Number	Bearing Dia.	Lock-up Yoke	Bearing Type	Lube Fitting	Cap Holes CL to CL	Converts Part#	U-Joint Type
1-6300	1.078 1.078	2.125 2.125	ROUND-ISR	1 Bearing			DETROIT 7260
1-6301	1.078 1.078	2.125 2.125	ROUND-ISR	1 Cross			DETROIT 7260
2-6302	1.078 1.078	2.125 2.125	ROUND-ISR	1 Cross			DETROIT 7260 W / U-BOLTS
2-0527	1.078 1.126	2.125 2.622	ROUND-ISR	1 Bearing		1-6301 to 2-1175	DETROIT 7260 / DETROIT 7290
1-0436	1.102 1.102	2.024 2.024	ROUND-ISR	1 Bearing			KIA
1-0029	1.103 1.103	2.205 2.205	ROUND-ISR	1 Cross			INFINITI, NISSAN, SUBARU
1-1610	1.103 1.103	2.321 2.321	ROUND-ISR	1 Bearing			FORD, MAZDA
1-0014	1.123 1.123	3.062 3.062	ROUND-OSR	1 Cross			TOYOTA
2-3102	1.125	2.556 3.563	ROUND-ISR / WING-LWT	1 Cross	1.438		MECHANICS 3CRL
3-4152	1.125	3.243 4.234	ROUND-ISR / WING-LWT	1 Cross	1.438		MECHANICS 4C
1-5800	1.125 1.125	2.125 2.125	ROUND-ISR	1 Bearing			MECHANICS 2 1/2 RL
2-3010	1.125 1.125	2.556 2.556	ROUND-ISR	1 Bearing			MECHANICS 3R
2-3011	1.125 1.125	2.556 2.556	ROUND-ISR	1 Cross			MECHANICS 3R
2-3011G	1.125 1.125	2.556 2.556	ROUND-ISR	None			MECHANICS 3R
2-3111	1.125 1.125	2.556 2.556	ROUND-ISR	None			MECHANICS 3R
2-3049	1.125 1.125	2.556 3.622	ROUND-ISR / OSR	1 Cross		2-3011 to 2-4900	CLEVELAND P55-55-675 / MECHANICS 3R
3-3133	1.125 1.126	2.556 2.622	ROUND-ISR	1 Cross		2-3011 to 2-1175	SAGINAW S44 / DETROIT 7290
2-1153	1.125 1.188	2.556 3.622	ROUND-ISR / OSR	1 Cross		2-3011 to 2-0053	SPICER 1350 / MECHANICS 3R
2-4953	1.125 1.188	3.622 3.622	ROUND-OSR	1 Cross		2-4900 to 2-0053	CLEVELAND P55-55-675 / SPICER 1350
2-1175	1.126 1.126	2.622 2.622	ROUND-ISR	1 Cross			DETROIT 7290
2-1175G	1.126 1.126	2.622 2.622	ROUND-ISR	None			DETROIT 7290
1-2075	1.126 1.126	2.628 2.628	ROUND-OSR	1 Cross			PTO ROCKWELL L14N
1-1612	1.143 1.143	2.047 2.047	ROUND-ISR	1 Bearing			TOYOTA
2-0383	1.143 1.143	2.081 2.081	ROUND-ISR	1 Cross			ACURA, CHEVROLET, HONDA, ISUZU
2-0317	1.143 1.143	2.835 2.835	ROUND-ISR	1 Bearing			ACURA, ISUZU
2-0151	1.181 1.181	2.290 2.290	ROUND-ISR	1 Cross			MINI

LISTING BY ROUND BEARING CAPS

Part Number	Bearing Dia.	Lock-up Yoke	Bearing Type	Lube Fitting	Cap Holes CL to CL	Converts Part#	U-Joint Type
1-0297	1.188 1.188	2.188 2.188	ROUND-ISR	None			SPICER 1310WJ
1-0298	1.188 1.188	2.188 2.188	ROUND-ISR	1 Bearing			SPICER 1310WJ
2-0057	1.188 1.188	2.405 2.405	ROUND-ISR	None			SPICER SPL30WJ / 1350WJ
2-6200	1.188 1.188	2.562 3.622	ROUND-ISR / OSR	1 Cross			CLEVELAND R55-55-2
2-6600	1.188 1.188	3.127 4.187	ROUND-ISR / OSR	1 Cross			CLEVELAND O55-55-2
2-0521	1.188 1.188	3.150 3.150	ROUND-OSR	1 Cross			PTO METRIC B&P SERIES 5
2-1355	1.188 1.188	3.612 3.612	ROUND-OSR	None			AAM 1355
2-0052	1.188 1.188	3.622 3.622	ROUND-OSR	1 Bearing			SPICER 1350
2-0053	1.188 1.188	3.622 3.622	ROUND-OSR	1 Cross			SPICER 1350
2-0053G	1.188 1.188	3.622 3.622	ROUND-OSR	None			SPICER 1350
3-0621	1.188 1.188	3.622 3.622	ROUND-OSR	1 Cross			PTO METRIC B&P SERIES 6
2-1435	1.188 1.188	3.622 4.187	ROUND-OSR	None		2-0053 to 2-0054	SPICER 1350 / SPICER 1410
3-0415	1.188 1.188	4.178 4.178	ROUND-OSR	None			AAM 1415
2-0054	1.188 1.188	4.187 4.187	ROUND-OSR	1 Cross			SPICER 1410
2-0054G	1.188 1.188	4.187 4.187	ROUND-OSR	None			SPICER 1410
2-3190	1.188 1.232	4.187 3.000	ROUND-OSR / ISR	1 Cross		2-0054 to 3-0056	SPICER 1410 / DETROIT 5380
3-0056	1.232 1.232	30000 30000	ROUND-ISR	1 Cross			DETROIT 5380
2-2275	1.252 1.252	3.209 3.209	ROUND-OSR	1 Cross			PTO ROCKWELL L35N
2-2276	1.252 1.252	3.209 3.209	ROUND-OSR	2 Bearing			PTO ROCKWELL L35N
2-2475	1.252 1.252	4.085 4.085	ROUND-OSR	1 Bearing			PTO NEAPCO 2200 & N44 CV
2-0508	1.260 1.260	2.362 2.362	ROUND-ISR	1 Cross			KIA
2-0020	1.260 1.260	2.520 2.520	ROUND-ISR	1 Cross			TOYOTA
2-2421	1.260 1.260	2.992 2.992	ROUND-OSR	1 Cross			PTO METRIC WALTERSCHEID SERIES 2400
3-2580	1.260 1.417	4.330 3.504	ROUND-OSR	1 Cross			WALTERSCHEID 2580
3-0044	1.310 1.310	2.789 2.789	ROUND-ISR	1 Cross			ROCKWELL 44R
3-5132	1.313	3.312 4.529	ROUND-ISR / WING-DWT	1 Cross	1.688		MECHANICS 5C

LISTING BY ROUND BEARING CAPS

Part Number	Bearing Dia.	Lock-up Yoke	Bearing Type	Lube Fitting	Cap Holes CL to CL	Converts Part#	U-Joint Type
4-6107	1.313	4.309 5.529	ROUND-ISR / WING-DWT	1 Cross	1.688		MECHANICS 6C
4-6123	1.313 1.313	4.309 4.309	ROUND-ISR	1 Cross			MECHANICS 6C
3-0485	1.375 1.375	2.920 2.920	ROUND-ISR	None			AAM 1485WJ
3-1557	1.375 1.375	3.702 3.702	ROUND-ISR	1 Cross			AAM1555WJ
3-0157	1.375 1.375	3.780 3.780	ROUND-ISR	1 Cross			SPICER SPL70WJ / 1550WJ
3-0332	1.375 1.375	30000 30000	ROUND-ISR	1 Cross			SPICER 1480WJ
3-0486	1.375 1.375	4.178 4.178	ROUND-OSR	None			AAM 1485
3-0188	1.375 1.375	4.187 4.187	ROUND-OSR	1 Cross			SPICER 1480 & PTO NEAPCO 2600
3-0188G	1.375 1.375	4.187 4.187	ROUND-OSR	None			SPICER 1480 & NEAPCO 2600 PTO
3-6700	1.375 1.375	4.187 4.187	ROUND-OSR	1 Cross			CLEVELAND D56-55-2
3-1555	1.375 1.375	4.960 4.960	ROUND-OSR	None			AAM 1555
3-0155	1.375 1.375	4.965 4.965	ROUND-OSR	1 Cross			SPICER 1550
3-0155G	1.375 1.375	4.965 4.965	ROUND-OSR	None			SPICER 1550
3-6800	1.375 1.375	4.965 4.965	ROUND-OSR	1 Cross			CLEVELAND U56-55-2
3-0721	1.377 1.377	3.700 3.700	ROUND-OSR	1 Cross			PTO METRIC B&P SERIES 7
3-0821	1.377 1.377	4.193 4.193	ROUND-OSR	1 Cross			PTO METRIC B&P SERIES 8
3-2521	1.417 1.417	3.500 3.500	ROUND-OSR	1 Cross			PTO METRIC WALTERSCHEID SERIES 2500
3-0045	1.532 1.532	4.309 4.309	ROUND-OSR	1 Cross			ROCKWELL 55N
3-0055	1.560 1.560	4.550 4.550	ROUND-W/PLATE	1 Cross			SPICER 1500
3-0921	1.614 1.614	4.250 4.250	ROUND-OSR	1 Cross			PTO METRIC B&P SERIES 9
3-1021	1.614 1.614	4.646 4.646	ROUND-OSR	1 Cross			PTO METRIC B&P SERIES 10
4-1090	1.625 1.625	4.957 4.957	ROUND-OSR	1 Cross			SPICER SPL90 & SPL100
4-0165	1.625 1.625	5.590 5.590	ROUND-OSR	1 Cross			SPICER 1650
4-0279	1.875 1.875	5.312 5.312	ROUND-W/PLATE	2 Cross			SPICER 1610
4-0279Q	1.875 1.875	5.312 5.312	ROUND-W/PLATE	2 Cross			SPICER 1610
4-0674	1.875 1.875	5.312 5.312	ROUND-W/PLATE / ROUND	2 Cross			SPICER 1610 HALF ROUND

LISTING BY ROUND BEARING CAPS

Part Number	Bearing Dia.	Lock-up Yoke	Bearing Type	Lube Fitting	Cap Holes CL to CL	Converts Part#	U-Joint Type
4-0674Q	1.875 1.875	5.312 5.312	ROUND-W/PLATE / ROUND	2 Cross			SPICER 1610 HALF ROUND
6-0324	1.937	7.547 8.250	ROUND-W/PLATE / WING-HWD	2 Cross	2.812	6-0281 to 6-9016	SPICER 1810 / MECHANICS 9C
5-0280	1.937 1.937	6.094 6.094	ROUND-W/PLATE	2 Cross			SPICER 1710
5-0280Q	1.937 1.937	6.094 6.094	ROUND-W/PLATE	2 Cross			SPICER 1710
6-0675	1.937 1.937	6.094 6.187	ROUND-W/PLATE / ROUND	2 Cross			SPICER 1710 HALF ROUND
6-0675Q	1.937 1.937	6.094 6.187	ROUND-W/PLATE / ROUND	2 Cross			SPICER 1710 HALF ROUND
6-0407Q	1.937 1.937	7.000 7.000	ROUND-W/PLATE	2 Cross			SPICER 1760
6-0677Q	1.937 1.937	7.000 7.093	ROUND-W/PLATE / ROUND	2 Cross			SPICER 1760 HALF ROUND
6-0281	1.937 1.937	7.547 7.547	ROUND-W/PLATE	2 Cross			SPICER 1810
6-0281Q	1.937 1.937	7.547 7.547	ROUND-W/PLATE	2 Cross			SPICER 1810
6-0676	1.937 1.937	7.547 7.640	ROUND-W/PLATE / ROUND	2 Cross			SPICER 1810 HALF ROUND
6-0676Q	1.937 1.937	7.547 7.640	ROUND-W/PLATE / ROUND	2 Cross			SPICER 1810 HALF ROUND
6-0677	1.937 1.937	70000 7.093	ROUND-W/PLATE / ROUND	2 Cross			SPICER 1760 HALF ROUND
6-0407	1.937 1.937	70000 70000	ROUND-W/PLATE	2 Cross			SPICER 1760
6-0020	2.060	6.880 5.300	ROUND-OSR / WING-RPL HWD	None	2.812		MERITOR RPL 20
6-0025	2.060	8.200 6.630	ROUND-OSR / WING-RPL HWD	None	2.812		MERITOR RPL 25
6-1170	2.165 2.165	6.024 6.457	ROUND-W/PLATE LOCK / ROUND	1 Cross			SPICER SPL170
6-0326	2.186	8.094 8.250	ROUND-W/PLATE / WING-HWD	1 Cross	2.812	6-0308 to 6-9016	SPICER 1880 / MECHANICS 9C
6-0308	2.186 2.186	8.094 8.094	ROUND-W/PLATE	2 Cross			SPICER 1880
6-0124	2.312 2.312	6.593 6.593	ROUND-W/PLATE	2 Cross			SPICER 1800
6-1250	2.361 2.361	5.984 6.413	ROUND-W/PLATE LOCK / ROUND	1 Cross			SPICER SPL250

WING AND BLOCK STYLE BY SIZE

Part Number	Bearing Dia.	Lock-up Yoke	Bearing Type	Lube Fitting	Cap Holes CL to CL	Converts Part#	U-Joint Type
1-2134	1.000	2.342 3.125	ROUND-ISR / WING-LWT	1 Cross	1.312		MECHANICS 2 CRL
1-2171		3.125 3.125	WING-LWT	1 Bearing	1.312		MECHANICS 2CL
1-2185		3.125 3.125	WING-LWD / WING-LWT	1 Bearing	1.312		MECHANICS 2CL
1-2186		3.125 3.125	WING-LWD	1 Bearing	1.312		MECHANICS 2CL
2-0291	1.063	3.219 3.125	ROUND-OSR / WING-LWT	1 Bearing	1.312	1-0153 to 1-2171	SPICER 1310 / MECHANICS 2CL
2-2700	1.000	2.342 3.125	ROUND-OSR / WING-LWD	1 Bearing	1.312		MECHANICS 2CRL
2-3102	1.125	2.556 3.563	ROUND-ISR / WING-LWT	1 Cross	1.438		MECHANICS 3CRL
3-3152		3.563 3.563	WING-LWT	1 Cross	1.438		MECHANICS 3CL
3-3158		3.563 3.563	WING-LWT / WING-HWD	1 Cross	1.438		MECHANICS 3C
3-4123		4.234 4.234	WING-LWT / WING-LWD	1 Cross	1.438		MECHANICS 4C
3-4138		4.234 4.234	WING-LWT	1 Cross	1.438		MECHANICS 4C
3-4140		4.234 4.234	WING-LWT / WING-HWD	1 Cross	1.438		MECHANICS 4C
3-4143		4.234 4.234	WING-HWD	1 Cross	1.438		MECHANICS 4C
3-4152	1.125	3.243 4.234	ROUND-ISR / WING-LWT	1 Cross	1.438		MECHANICS 4C
3-5132	1.313	3.312 4.529	ROUND-ISR / WING-DWT	1 Cross	1.688		MECHANICS 5C
4-5122		4.529 4.529	WING-DWT	1 Cross	1.688		MECHANICS 5C
4-5173		4.529 4.529	WING-HWD / WING-DWT	1 Cross	1.688		MECHANICS 5C
4-5177		4.529 4.529	WING-HWD	1 Cross	1.688		MECHANICS 5C
4-5262		4.529 4.529	WING-HWD	None	1.688		MECHANICS 5C
4-6107	1.313	4.309 5.529	ROUND-ISR / WING-DWT	1 Cross	1.688		MECHANICS 6C
4-6114		5.529 5.529	WING-HWD / WING-DWT	1 Cross	1.688		MECHANICS 6C
4-6128		5.529 5.529	WING-HWD	1 Cross	1.688		MECHANICS 6C
4-6143		5.529 5.529	WING-DWT	1 Cross	1.688		MECHANICS 6C
4-6937		5.529 5.529	WING-HWD	None	1.688		MECHANICS 6C
5-5031		4.529 4.529	WING-HWD / WING-DWT	None	1.688		MECHANICS 5C special W/ hole in cross
4-6162		5.529 5.841	WING-DWT / WING-DWT	1 Cross	1.688 / 1.938		MECHANICS 6C / MECHANICS 7C

WING AND BLOCK STYLE BY SIZE

Part Number	Bearing Dia.	Lock-up Yoke	Bearing Type	Lube Fitting	Cap Holes CL to CL	Converts Part#	U-Joint Type
4-6163		5.529 5.841	WING-DWT / WING-HWD	1 Cross	1.688 / 1.938		MECHANICS 6C / MECHANICS 7C
4-5800		5.312 5.312	WING-HWD	1 Cross	1.937		ROCKWELL 58WB
4-5801		5.312 5.312	WING-DWT	1 Cross	1.937		ROCKWELL 58WB-1
4-5802		5.312 5.312	WING-HWD / WING-DWT	1 Cross	1.937		ROCKWELL 58WB-2
5-7126		5.841 5.841	WING-HWD	1 Cross	1.938		MECHANICS 7C
5-7205		5.841 5.841	WING-DWT	1 Cross	1.938		MECHANICS 7C
5-7207		5.841 5.841	WING-HWD / WING-DWT	1 Cross	1.938		MECHANICS 7C
5-7956		5.841 5.841	WING-HWD	None	1.938		MECHANICS 7C
6-8113		8.122 8.122	WING-HWD	1 Cross	1.938		MECHANICS 8C
6-8205		8.122 8.122	WING-DWT	1 Cross	1.938		MECHANICS 8C
6-8207		8.122 8.122	WING-DWT / WING-HWD	1 Cross	1.938		MECHANICS 8C
6-8957		8.122 8.122	WING-HWD	None	1.938		MECHANICS 8C
6-0020	2.060	6.880 5.300	ROUND-OSR / WING-RPL HWD	None	2.812		MERITOR RPL 20
6-0025	2.060	8.200 6.630	ROUND-OSR / WING-RPL HWD	None	2.812		MERITOR RPL 25
6-0324	1.937	7.547 8.250	ROUND-W/PLATE / WING-HWD	2 Cross	2.812	6-0281 to 6-9016	SPICER 1810 / MECHANICS 9C
6-0326	2.186	8.094 8.250	ROUND-W/PLATE / WING-HWD	1 Cross	2.812	6-0308 to 6-9016	SPICER 1880 / MECHANICS 9C
6-8514		6.500 6.500	WING-LWT	None	2.812		MECHANICS 8.5C
6-8515		6.500 6.500	WING-LWT / WING-HWD	None	2.812		MECHANICS 8.5C
6-8516		6.500 6.500	WING-HWD	1 Cross	2.812		MECHANICS 8.5C
6-9014		8.250 8.250	WING-LWT	1 Cross	2.812		MECHANICS 9C
6-9016		8.250 8.250	WING-HWD	1 Cross	2.812		MECHANICS 9C
6-9017		8.250 8.250	WING-LWT / WING-HWD	1 Cross	2.812		MECHANICS 9C
6-1055		8.750 8.750	WING-HWD	1 Cross	3.500		MECHANICS 10.5C
6-1191		8.750 8.750	WING-HWD	None	3.500		MECHANICS 11C
6-1005		8.375 8.375	WING-HWD	1 Cross	3.625		MECHANICS 10C
6-1007		8.375 8.375	WING-LWD	1 Cross	3.625		MECHANICS 10C

WING AND BLOCK STYLE BY SIZE

Part Number	Bearing Dia.	Lock-up Yoke	Bearing Type	Lube Fitting	Cap Holes CL to CL	Converts Part#	U-Joint Type
6-1076		8.375 8.375	WING-HWD	None	3.625		MECHANICS 10C
6-1538		10.23 10.23	WING-HWD	None	3.938		MECHANICS 15C

SIZE IDENTIFICATION BY PART NUMBER

Part Number	Bearing Dia.	Lock-up Yoke	Bearing Type	Lube Fitting	Cap Holes CL to CL	Converts Part#	U-Joint Type
1-0005	1.063 1.063	2.938 2.938	ROUND-OSR	1 Bearing			SPICER 1300
1-0011	0.788 0.788	2.260 2.260	ROUND-OSR	1 Bearing			TOYOTA
1-0012	1.024 1.024	2.200 2.200	ROUND-ISR	None			TOYOTA
1-0013	1.024 1.024	1.843 1.843	ROUND-ISR	1 Bearing			TOYOTA
1-0014	1.123 1.123	3.062 3.062	ROUND-OSR	1 Cross			TOYOTA
1-0027	0.985 0.985	1.736 1.736	ROUND-ISR	1 Bearing			NISSAN, SUBARU
1-0028	0.788 0.788	1.496 1.496	ROUND-ISR	None			NISSAN, TOYOTA
1-0029	1.103 1.103	2.205 2.205	ROUND-ISR	1 Cross			INFINITI, NISSAN, SUBARU
1-0061	0.969 0.969	1.693 1.693	ROUND-ISR	1 Cross			MECHANICS 1 1/2 RL
1-0103	0.938 0.938	1.500 1.500	ROUND-ISR	None			SPICER 1000 STEERING
1-0105	1.000 1.000	1.717 1.717	ROUND-ISR	1 Cross			SPICER 1110
1-0121	0.866 0.866	2.126 2.126	ROUND-OSR	1 Cross			PTO METRIC B&P SERIES 1
1-0134	1.063 1.063	3.219 3.622	ROUND-OSR	1 Cross		1-0153 to 2-4800	SPICER 1310 / SPICER 1330
1-0153	1.063 1.063	3.219 3.219	ROUND-OSR	1 Cross			SPICER 1310
1-0153G	1.063 1.063	3.219 3.219	ROUND-OSR	None			SPICER 1310
1-0154	1.063 1.063	3.219 3.219	ROUND-OSR	1 Bearing			SPICER 1310
1-0170	0.938 0.938	1.500 1.500	ROUND-ISR	1 Cross			SPICER 1000
1-0170NPL	0.938 0.938	1.500 1.500	ROUND-ISR	None			SPICER 1000
1-0171	0.938 0.938	1.500 1.500	ROUND-ISR	1 Bearing			SPICER 1000
1-0172	0.938 0.938	1.500 1.500	ROUND-ISR	None			SPICER 1000
1-0174	1.063 1.063	2.188 2.188	ROUND-ISR	1 Cross			SPICER 1310WJ
1-0175	1.063 1.063	2.188 2.188	ROUND-ISR	1 Bearing			SPICER 1310WJ
1-0200	1.063 1.063	3.219 3.219	ROUND-OSR	1 Cross			SPICER 1280
1-0221	0.937 0.937	2.413 2.413	ROUND-OSR	1 Cross			PTO METRIC B&P SERIES 2
1-0248	1.000 1.063	1.717 2.438	ROUND-ISR / OSR	1 Cross		1-0105 to 1-0443	SPICER 1110 / SPICER 1210
1-0278	1.063 1.063	3.219 3.219	ROUND-OSR	1 Cross			SPICER 1310 CV

SIZE IDENTIFICATION BY PART NUMBER

Part Number	Bearing Dia.	Lock-up Yoke	Bearing Type	Lube Fitting	Cap Holes CL to CL	Converts Part#	U-Joint Type
1-0297	1.188 1.188	2.188 2.188	ROUND-ISR	None			SPICER 1310WJ
1-0298	1.188 1.188	2.188 2.188	ROUND-ISR	1 Bearing			SPICER 1310WJ
1-0300	0.938 0.938	2.412 2.412	ROUND-OSR	1 Bearing			SPICER 1100
1-0321	1.063 1.063	2.756 2.756	ROUND-OSR	1 Cross			PTO METRIC WALTERSCHEID SERIES I
1-0350	1.063 1.063	2.343 2.343	ROUND-ISR	1 Cross			SPICER 1310 SPEC
1-0421	1.063 1.063	2.937 2.937	ROUND-OSR	1 Cross			PTO METRIC B&P SERIES 4
1-0430	0.867 0.867	1.400 1.400	ROUND-ISR	1 Bearing			NISSAN, SUBARU, TOYOTA staked replacement
1-0431	0.947 0.947	1.900 1.900	ROUND-ISR	1 Bearing			BMW, MAZDA staked replacement
1-0436	1.102 1.102	2.024 2.024	ROUND-ISR	1 Bearing			KIA
1-0439	1.063 1.063	2.646 2.646	ROUND-OSR	1 Bearing			SATURN
1-0443	1.063 1.063	2.438 2.438	ROUND-OSR	1 Bearing			SPICER 1210
1-0445	1.063 1.063	2.343 3.219	ROUND-ISR / OSR	1 Cross		1-0350 to 1-0153	SPICER 1310 SPEC / SPICER 1310
1-0449	1.063 1.063	1.930 1.930	ROUND-ISR	1 Bearing			INFINITI, NISSAN
1-0475	0.750 0.750	1.906 1.906	ROUND-OSR	None			NEAPCO 0400 STEERING
1-0616	0.938 0.969	1.500 1.443	ROUND-ISR	1 Cross		1-0170 to 1-1475	SPICER 1000 / PTO ROCKWELL L6N
1-1001	0.866 0.866	2.157 2.157	ROUND-OSR	1 Cross			PTO METRIC WALTERSCHEID SERIES 2100
1-1275	1.064 1.064	1.819 1.819	ROUND-ISR	1 Cross			PTO ROCKWELL L12N
1-1475	0.969 0.969	1.443 1.443	ROUND-ISR	1 Cross			PTO ROCKWELL L6N
1-1516	0.985 0.985	3.027 3.027	ROUND-OSR	1 Cross			CHRYSLER, MITSUBISHI
1-1557	0.985 0.985	2.517 2.517	ROUND-OSR	1 Bearing			DODGE, MITSUBISHI, SUZUKI
1-1604	0.886 0.886	1.482 1.482	ROUND-ISR	1 Bearing			MAZDA
1-1606	0.985 0.985	1.717 1.717	ROUND-ISR	1 Bearing			MAZDA
1-1610	1.103 1.103	2.321 2.321	ROUND-ISR	1 Bearing			FORD, MAZDA
1-1612	1.143 1.143	2.047 2.047	ROUND-ISR	1 Bearing			TOYOTA
1-1875	1.000 1.000	2.342 2.342	ROUND-ISR	1 Cross			PTO NEAPCO 1800
1-2075	1.126 1.126	2.628 2.628	ROUND-OSR	1 Cross			PTO ROCKWELL L14N

SIZE IDENTIFICATION BY PART NUMBER

Part Number	Bearing Dia.	Lock-up Yoke	Bearing Type	Lube Fitting	Cap Holes CL to CL	Converts Part#	U-Joint Type
1-2134	1.000	2.342 3.125	ROUND-ISR / WING-LWT	1 Cross	1.312		MECHANICS 2 CRL
1-2171		3.125 3.125	WING-LWT	1 Bearing	1.312		MECHANICS 2CL
1-2173	1.000 1.125	2.342 2.342	ROUND-ISR	1 Cross			MECHANICS 2RL
1-2185		3.125 3.125	WING-LWD / WING-LWT	1 Bearing	1.312		MECHANICS 2CL
1-2186		3.125 3.125	WING-LWD	1 Bearing	1.312		MECHANICS 2CL
1-3600	1.000 1.000	2.342 2.342	ROUND-ISR	1 Cross			MECHANICS 2RL
1-3650	1.000 1.063	2.342 3.219	ROUND-ISR / OSR	1 Cross		1-3600 to 1-0153	MECHANICS 2RL / SPICER 1310
1-4635	1.063 1.125	2.380 3.219	ROUND-ISR / OSR	1 Cross			CLEVELAND S55-55-675
1-5349	1.063 1.125	3.219 3.622	ROUND-OSR	1 Cross		1-0153 to 2-4900	SPICER 1310 / CLEVELAND P55-55-675
1-5800	1.125 1.125	2.125 2.125	ROUND-ISR	1 Bearing			MECHANICS 2 1/2 RL
1-5900	1.063 1.063	2.380 3.219	ROUND-ISR / OSR	1 Cross			CLEVELAND S55-55-2
1-6300	1.078 1.078	2.125 2.125	ROUND-ISR	1 Bearing			DETROIT 7260
1-6301	1.078 1.078	2.125 2.125	ROUND-ISR	1 Cross			DETROIT 7260
2-0020	1.260 1.260	2.520 2.520	ROUND-ISR	1 Cross			TOYOTA
2-0052	1.188 1.188	3.622 3.622	ROUND-OSR	1 Bearing			SPICER 1350
2-0053	1.188 1.188	3.622 3.622	ROUND-OSR	1 Cross			SPICER 1350
2-0053G	1.188 1.188	3.622 3.622	ROUND-OSR	None			SPICER 1350
2-0054	1.188 1.188	4.187 4.187	ROUND-OSR	1 Cross			SPICER 1410
2-0054G	1.188 1.188	4.187 4.187	ROUND-OSR	None			SPICER 1410
2-0057	1.188 1.188	2.405 2.405	ROUND-ISR	None			SPICER SPL30WJ / 1350WJ
2-0151	1.181 1.181	2.290 2.290	ROUND-ISR	1 Cross			MITSUBISHI
2-0291	1.063	3.219 3.125	ROUND-OSR / WING-LWT	1 Bearing	1.312	1-0153 to 1-2171	SPICER 1310 / MECHANICS 2CL
2-0317	1.143 1.143	2.835 2.835	ROUND-ISR	1 Bearing			ACURA, ISUZU
2-0355	1.063 1.126	3.622 2.622	ROUND-OSR / ISR	1 Cross		2-4800 to 2-1175	SPICER 1330 / DETROIT 7290
2-0355G	1.063 1.126	3.622 2.622	ROUND-OSR / ISR	None		2-4800 to 2-1175	SPICER 1330 / DETROIT 7290
2-0382	1.024 1.024	2.756 2.756	ROUND-OSR	1 Bearing			SUZUKI

SIZE IDENTIFICATION BY PART NUMBER

Part Number	Bearing Dia.	Lock-up Yoke	Bearing Type	Lube Fitting	Cap Holes CL to CL	Converts Part#	U-Joint Type
2-0383	1.143 1.143	2.081 2.081	ROUND-ISR	1 Cross			ACURA, CHEVROLET, HONDA, ISUZU
2-0456	1.063 1.063	1.640 1.640	ROUND-ISR	None			SPICER 1210WJ
2-0506	1.044 1.044	1.988 1.988	ROUND-ISR	1 Bearing			KIA
2-0508	1.260 1.260	2.362 2.362	ROUND-ISR	1 Cross			KIA
2-0520	1.063 1.063	3.145 3.145	ROUND-OSR	1 Cross			HYUNDAI
2-0521	1.188 1.188	3.150 3.150	ROUND-OSR	1 Cross			PTO METRIC B&P SERIES 5
2-0527	1.078 1.126	2.125 2.622	ROUND-ISR	1 Bearing		1-6301 to 2-1175	DETROIT 7260 / DETROIT 7290
2-0599	1.063 1.078	3.622 2.125	ROUND-OSR / ISR	1 Cross		2-4800 to 1-6301	SPICER 1330 / DETROIT 7260
2-1153	1.125 1.188	2.556 3.622	ROUND-ISR / OSR	1 Cross		2-3011 to 2-0053	SPICER 1350 / MECHANICS 3R
2-1175	1.126 1.126	2.622 2.622	ROUND-ISR	1 Cross			DETROIT 7290
2-1175G	1.126 1.126	2.622 2.622	ROUND-ISR	None			DETROIT 7290
2-1203	1.063 1.063	2.781 3.622	ROUND-ISR / OSR	1 Cross			CLEVELAND P55-55-2
2-1355	1.188 1.188	3.612 3.612	ROUND-OSR	None			AAM 1355
2-1435	1.188 1.188	3.622 4.187	ROUND-OSR	None		2-0053 to 2-0054	SPICER 1350 / SPICER 1410
2-1569	1.063 1.125	3.622 2.556	ROUND-OSR / ISR	1 Cross		2-4800 to 2-3011	SPICER 1330 / MECHANICS 3R
2-1569G	1.063 1.125	3.622 2.556	ROUND-OSR / ISR	None		2-4800 to 2-3011	SPICER 1330 / MECHANICS 3R
2-2275	1.252 1.252	3.209 3.209	ROUND-OSR	1 Cross			PTO ROCKWELL L35N
2-2276	1.252 1.252	3.209 3.209	ROUND-OSR	2 Bearing			PTO ROCKWELL L35N
2-2421	1.260 1.260	2.992 2.992	ROUND-OSR	1 Cross			PTO METRIC WALTERSCHEID SERIES 2400
2-2475	1.252 1.252	4.085 4.085	ROUND-OSR	1 Bearing			PTO NEAPCO 2200 & N44 CV
2-2480	1.063 1.260	3.859 2.992	ROUND-OSR	1 Cross			WALTERSCHEID 2480
2-2518	1.063 1.125	3.219 2.125	ROUND-OSR / ISR	1 Cross		1-0153 to 1-5800	SPICER 1310 / MECHANICS 2 1/2 RL
2-2700	1.000	2.342 3.125	ROUND-OSR / WING-LWD	1 Bearing	1.312		MECHANICS 2CRL
2-3010	1.125 1.125	2.556 2.556	ROUND-ISR	1 Bearing			MECHANICS 3R
2-3011	1.125 1.125	2.556 2.556	ROUND-ISR	1 Cross			MECHANICS 3R
2-3011G	1.125 1.125	2.556 2.556	ROUND-ISR	None			MECHANICS 3R

SIZE IDENTIFICATION BY PART NUMBER

Part Number	Bearing Dia.	Lock-up Yoke	Bearing Type	Lube Fitting	Cap Holes CL to CL	Converts Part#	U-Joint Type
2-3049	1.125 1.125	2.556 3.622	ROUND-ISR / OSR	1 Cross		2-3011 to 2-4900	CLEVELAND P55-55-675 / MECHANICS 3R
2-3050	1.063 1.188	3.622 3.622	ROUND-OSR	1 Cross		2-4800 to 2-0053	SPICER 1330 / SPICER 1350
2-3100	1.063 1.078	3.219 2.125	ROUND-OSR / ISR	1 Cross		1-0153 to 1-6301	SPICER 1310 / DETROIT 7260
2-3102	1.125	2.556 3.563	ROUND-ISR / WING-LWT	1 Cross	1.438		MECHANICS 3CRL
2-3111	1.125 1.125	2.556 2.556	ROUND-ISR	None			MECHANICS 3R
2-3190	1.188 1.232	4.187 3.000	ROUND-OSR / ISR	1 Cross		2-0054 to 3-0056	SPICER 1410 / DETROIT 5380
2-4800	1.063 1.063	3.622 3.622	ROUND-OSR	1 Cross			SPICER 1330
2-4800G	1.063 1.063	3.622 3.622	ROUND-OSR	None			SPICER 1330
2-4801	1.063 1.063	3.622 3.622	ROUND-OSR	1 Bearing			SPICER 1330
2-4805	1.066 1.066	3.622 3.622	ROUND-OSR	None			VISTEON 1330XC
2-4900	1.063 1.125	2.781 3.622	ROUND-ISR / OSR	1 Cross			CLEVELAND P55-55-675
2-4900G	1.063 1.125	2.781 3.622	ROUND-ISR / OSR	None			CLEVELAND P55-55-675
2-4953	1.125 1.188	3.622 3.622	ROUND-OSR	1 Cross		2-4900 to 2-0053	CLEVELAND P55-55-675 / SPICER 1350
2-5374	1.063 1.063	2.188 3.219	ROUND-ISR / OSR	1 Cross		1-0174 to 1-0153	SPICER 1310WJ / SPICER 1310
2-6200	1.188 1.188	2.562 3.622	ROUND-ISR / OSR	1 Cross			CLEVELAND R55-55-2
2-6302	1.078 1.078	2.125 2.125	ROUND-ISR	1 Cross			DETROIT 7260 W / U-BOLTS
2-6600	1.188 1.188	3.127 4.187	ROUND-ISR / OSR	1 Cross			CLEVELAND O55-55-2
3-0044	1.310 1.310	2.789 2.789	ROUND-ISR	1 Cross			ROCKWELL 44R
3-0045	1.532 1.532	4.309 4.309	ROUND-OSR	1 Cross			ROCKWELL 55N
3-0055	1.560 1.560	4.550 4.550	ROUND-W/PLATE	1 Cross			SPICER 1500
3-0056	1.232 1.232	30000 30000	ROUND-ISR	1 Cross			DETROIT 5380
3-0155	1.375 1.375	4.965 4.965	ROUND-OSR	1 Cross			SPICER 1550
3-0155G	1.375 1.375	4.965 4.965	ROUND-OSR	None			SPICER 1550
3-0157	1.375 1.375	3.780 3.780	ROUND-ISR	1 Cross			SPICER SPL70WJ / 1550WJ
3-0188	1.375 1.375	4.187 4.187	ROUND-OSR	1 Cross			SPICER 1480 & PTO NEAPCO 2600
3-0188G	1.375 1.375	4.187 4.187	ROUND-OSR	None			SPICER 1480 & NEAPCO 2600 PTO

SIZE IDENTIFICATION BY PART NUMBER

Part Number	Bearing Dia.	Lock-up Yoke	Bearing Type	Lube Fitting	Cap Holes CL to CL	Converts Part#	U-Joint Type
3-0332	1.375 1.375	30000 30000	ROUND-ISR	1 Cross			SPICER 1480WJ
3-0415	1.188 1.188	4.178 4.178	ROUND-OSR	None			AAM 1415
3-0485	1.375 1.375	2.920 2.920	ROUND-ISR	None			AAM 1485WJ
3-0486	1.375 1.375	4.178 4.178	ROUND-OSR	None			AAM 1485
3-0488	1.066 1.066	3.787 3.787	ROUND-OSR	None			VISTEON SPECIAL staked replacement
3-0621	1.188 1.188	3.622 3.622	ROUND-OSR	1 Cross			PTO METRIC B&P SERIES 6
3-0721	1.377 1.377	3.700 3.700	ROUND-OSR	1 Cross			PTO METRIC B&P SERIES 7
3-0821	1.377 1.377	4.193 4.193	ROUND-OSR	1 Cross			PTO METRIC B&P SERIES 8
3-0921	1.614 1.614	4.250 4.250	ROUND-OSR	1 Cross			PTO METRIC B&P SERIES 9
3-1021	1.614 1.614	4.646 4.646	ROUND-OSR	1 Cross			PTO METRIC B&P SERIES 10
3-1555	1.375 1.375	4.960 4.960	ROUND-OSR	None			AAM 1555
3-1557	1.375 1.375	3.702 3.702	ROUND-ISR	1 Cross			AAM1555WJ
3-2521	1.417 1.417	3.500 3.500	ROUND-OSR	1 Cross			PTO METRIC WALTERSCHEID SERIES 2500
3-2580	1.260 1.417	4.330 3.504	ROUND-OSR	1 Cross			WALTERSCHEID 2580
3-3130	1.063 1.125	3.219 2.556	ROUND-OSR / ISR	1 Cross		1-0153 to 2-3011	SPICER 1310 / MECHANICS 3R
3-3131	1.063 1.126	3.219 2.622	ROUND-OSR / ISR	1 Cross		1-0153 to 2-1175	SPICER 1310 / DETROIT 7290
3-3133	1.125 1.126	2.556 2.622	ROUND-ISR	1 Cross		2-3011 to 2-1175	SAGINAW S44 / DETROIT 7290
3-3140	1.063 1.188	3.219 3.622	ROUND-OSR	1 Cross		1-0153 to 2-0053	SPICER 1310 / SPICER 1350
3-3152		3.563 3.563	WING-LWT	1 Cross	1.438		MECHANICS 3CL
3-3158		3.563 3.563	WING-LWT / WING-HWD	1 Cross	1.438		MECHANICS 3C
3-4123		4.234 4.234	WING-LWT / WING-LWD	1 Cross	1.438		MECHANICS 4C
3-4138		4.234 4.234	WING-LWT	1 Cross	1.438		MECHANICS 4C
3-4140		4.234 4.234	WING-LWT / WING-HWD	1 Cross	1.438		MECHANICS 4C
3-4143		4.234 4.234	WING-HWD	1 Cross	1.438		MECHANICS 4C
3-4152	1.125	3.243 4.234	ROUND-ISR / WING-LWT	1 Cross	1.438		MECHANICS 4C
3-5132	1.313	3.312 4.529	ROUND-ISR / WING-DWT	1 Cross	1.688		MECHANICS 5C

SIZE IDENTIFICATION BY PART NUMBER

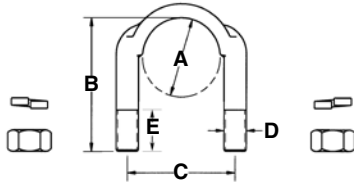
Part Number	Bearing Dia.	Lock-up Yoke	Bearing Type	Lube Fitting	Cap Holes CL to CL	Converts Part#	U-Joint Type
3-6700	1.375 1.375	4.187 4.187	ROUND-OSR	1 Cross			CLEVELAND D56-55-2
3-6800	1.375 1.375	4.965 4.965	ROUND-OSR	1 Cross			CLEVELAND U56-55-2
4-0165	1.625 1.625	5.590 5.590	ROUND-OSR	1 Cross			SPICER 1650
4-0279	1.875 1.875	5.312 5.312	ROUND-W/PLATE	2 Cross			SPICER 1610
4-0279Q	1.875 1.875	5.312 5.312	ROUND-W/PLATE	2 Cross			SPICER 1610
4-0674	1.875 1.875	5.312 5.312	ROUND-W/PLATE / ROUND	2 Cross			SPICER 1610 HALF ROUND
4-0674Q	1.875 1.875	5.312 5.312	ROUND-W/PLATE / ROUND	2 Cross			SPICER 1610 HALF ROUND
4-1090	1.625 1.625	4.957 4.957	ROUND-OSR	1 Cross			SPICER SPL90 & SPL100
4-5122		4.529 4.529	WING-DWT	1 Cross	1.688		MECHANICS 5C
4-5173		4.529 4.529	WING-HWD / WING-DWT	1 Cross	1.688		MECHANICS 5C
4-5177		4.529 4.529	WING-HWD	1 Cross	1.688		MECHANICS 5C
4-5262		4.529 4.529	WING-HWD	None	1.688		MECHANICS 5C
4-5800		5.312 5.312	WING-HWD	1 Cross	1.937		ROCKWELL 58WB
4-5801		5.312 5.312	WING-DWT	1 Cross	1.937		ROCKWELL 58WB-1
4-5802		5.312 5.312	WING-HWD / WING-DWT	1 Cross	1.937		ROCKWELL 58WB-2
4-6107	1.313	4.309 5.529	ROUND-ISR / WING-DWT	1 Cross	1.688		MECHANICS 6C
4-6114		5.529 5.529	WING-HWD / WING-DWT	1 Cross	1.688		MECHANICS 6C
4-6123	1.313 1.313	4.309 4.309	ROUND-ISR	1 Cross			MECHANICS 6C
4-6128		5.529 5.529	WING-HWD	1 Cross	1.688		MECHANICS 6C
4-6143		5.529 5.529	WING-DWT	1 Cross	1.688		MECHANICS 6C
4-6162		5.529 5.841	WING-DWT / WING-DWT	1 Cross	1.688 / 1.938		MECHANICS 6C / MECHANICS 7C
4-6163		5.529 5.841	WING-DWT / WING-HWD	1 Cross	1.688 / 1.938		MECHANICS 6C / MECHANICS 7C
4-6937		5.529 5.529	WING-HWD	None	1.688		MECHANICS 6C
5-0280	1.937 1.937	6.094 6.094	ROUND-W/PLATE	2 Cross			SPICER 1710
5-0280Q	1.937 1.937	6.094 6.094	ROUND-W/PLATE	2 Cross			SPICER 1710
5-5031		4.529 4.529	WING-HWD / WING-DWT	None	1.688		MECHANICS 5C special W/ hole in cross

SIZE IDENTIFICATION BY PART NUMBER

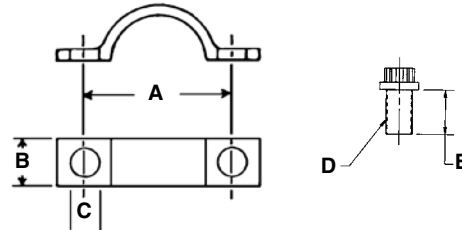
Part Number	Bearing Dia.	Lock-up Yoke	Bearing Type	Lube Fitting	Cap Holes CL to CL	Converts Part#	U-Joint Type
5-7126		5.841 5.841	WING-HWD	1 Cross	1.938		MECHANICS 7C
5-7205		5.841 5.841	WING-DWT	1 Cross	1.938		MECHANICS 7C
5-7207		5.841 5.841	WING-HWD / WING-DWT	1 Cross	1.938		MECHANICS 7C
5-7956		5.841 5.841	WING-HWD	None	1.938		MECHANICS 7C
6-0020	2.060	6.880 5.300	ROUND-OSR / WING-RPL HWD	None	2.812		MERITOR RPL 20
6-0025	2.060	8.200 6.630	ROUND-OSR / WING-RPL HWD	None	2.812		MERITOR RPL 25
6-0124	2.312 2.312	6.593 6.593	ROUND-W/PLATE	2 Cross			SPICER 1800
6-0281	1.937 1.937	7.547 7.547	ROUND-W/PLATE	2 Cross			SPICER 1810
6-0281Q	1.937 1.937	7.547 7.547	ROUND-W/PLATE	2 Cross			SPICER 1810
6-0308	2.186 2.186	8.094 8.094	ROUND-W/PLATE	2 Cross			SPICER 1880
6-0324	1.937	7.547 8.250	ROUND-W/PLATE / WING-HWD	2 Cross	2.812	6-0281 to 6-9016	SPICER 1810 / MECHANICS 9C
6-0326	2.186	8.094 8.250	ROUND-W/PLATE / WING-HWD	1 Cross	2.812	6-0308 to 6-9016	SPICER 1880 / MECHANICS 9C
6-0407	1.937 1.937	70000 70000	ROUND-W/PLATE	2 Cross			SPICER 1760
6-0407Q	1.937 1.937	7.000 7.000	ROUND-W/PLATE	2 Cross			SPICER 1760
6-0675	1.937 1.937	6.094 6.187	ROUND-W/PLATE / ROUND	2 Cross			SPICER 1710 HALF ROUND
6-0675Q	1.937 1.937	6.094 6.187	ROUND-W/PLATE / ROUND	2 Cross			SPICER 1710 HALF ROUND
6-0676	1.937 1.937	7.547 7.640	ROUND-W/PLATE / ROUND	2 Cross			SPICER 1810 HALF ROUND
6-0676Q	1.937 1.937	7.547 7.640	ROUND-W/PLATE / ROUND	2 Cross			SPICER 1810 HALF ROUND
6-0677	1.937 1.937	70000 7.093	ROUND-W/PLATE / ROUND	2 Cross			SPICER 1760 HALF ROUND
6-0677Q	1.937 1.937	7.000 7.093	ROUND-W/PLATE / ROUND	2 Cross			SPICER 1760 HALF ROUND
6-1005		8.375 8.375	WING-HWD	1 Cross	3.625		MECHANICS 10C
6-1007		8.375 8.375	WING-LWD	1 Cross	3.625		MECHANICS 10C
6-1055		8.750 8.750	WING-HWD	1 Cross	3.500		MECHANICS 10.5C
6-1076		8.375 8.375	WING-HWD	None	3.625		MECHANICS 10C
6-1170	2.165 2.165	6.024 6.457	ROUND-W/PLATE LOCK / ROUND	1 Cross			SPICER SPL170
6-1191		8.750 8.750	WING-HWD	None	3.500		MECHANICS 11C

SIZE IDENTIFICATION BY PART NUMBER

Part Number	Bearing Dia.	Lock-up Yoke	Bearing Type	Lube Fitting	Cap Holes CL to CL	Converts Part#	U-Joint Type
6-1250	2.361 2.361	5.984 6.413	ROUND-W/PLATE LOCK / ROUND	1 Cross			SPICER SPL250
6-1538		10.23 10.23	WING-HWD	None	3.938		MECHANICS 15C
6-8113		8.122 8.122	WING-HWD	1 Cross	1.938		MECHANICS 8C
6-8205		8.122 8.122	WING-DWT	1 Cross	1.938		MECHANICS 8C
6-8207		8.122 8.122	WING-DWT / WING-HWD	1 Cross	1.938		MECHANICS 8C
6-8514		6.500 6.500	WING-LWT	None	2.812		MECHANICS 8.5C
6-8515		6.500 6.500	WING-LWT / WING-HWD	None	2.812		MECHANICS 8.5C
6-8516		6.500 6.500	WING-HWD	1 Cross	2.812		MECHANICS 8.5C
6-8957		8.122 8.122	WING-HWD	None	1.938		MECHANICS 8C
6-9014		8.250 8.250	WING-LWT	1 Cross	2.812		MECHANICS 9C
6-9016		8.250 8.250	WING-HWD	1 Cross	2.812		MECHANICS 9C
6-9017		8.250 8.250	WING-LWT / WING-HWD	1 Cross	2.812		MECHANICS 9C



U-Bolt Dimensions



Bearing Strap Dimensions

U-BOLT KIT DIMENSIONAL SIZE LISTING

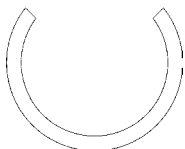
A Bearing OD	B Length	C CL-CL	D Thread Size	E Thread Length	Torque (Ft-Lbs.)	Part Number	Series
1.063	1.72	1.406	5/16-24	0.50	14-17	1-0089	1310/1330
1.188	1.97	1.656	3/8-24	0.62	20-24	1-0099	1350/1410
1.375	2.25	1.906	7/16-20	0.72	32-37	1-0109	1480/1550
1.125	1.80	1.578	5/16-24	0.72	14-17	1-0189	FORD 1310/1330

BEARING STRAP KIT DIMENSIONAL SIZE LISTING

Bearing OD	A CL-CL	B Width	C Hole	D Thread Size	E Under Head	Torque (Ft-Lbs.)	Part Number	Series
1.125	1.53	0.62	0.28	1/4-28	0.59	13-18	1-0018	7290
1.188	1.81	0.75	0.34	5/16-24	0.75	30-35	1-0019	1350/1410 (SPR)
1.188	1.66	0.75	0.34	5/16-24	1.31	30-35	1-0020	1350/1410 (GM)
1.375	2.12	0.81	0.41	3/8-24	0.75	55-60	1-0021	1480/1550
1.063	1.59	0.69	0.28	1/4-28	0.59	13-18	1-0022	1310/1330 (SPR)
1.078	1.50	0.56	0.28	1/4-28	0.62	13-18	1-0023	7260
1.063	1.59	0.62	0.34	5/16-24	1.50	30-35	1-0024	1310/1330 (GM)
1.125	1.81	0.62	0.34	5/16-24	1.50	30-35	1-0025	3R
1.625	2.31	0.88	0.41	3/8-24	0.75	45-60	N90-70-28X	SPL90 / 100
1.875	2.50	0.94	0.41	3/8-24	0.75	45-60	1-0045	1610
1.937	2.81	1.00	0.53	1/2-20	1.00	115-135	1-0046	1710/1760/1810
2.165	3.228	1.100	0.488	M12x1.25	0.984	115-135	N170-70-18X	SPL170
2.361	3.444	1.132	0.488	M12x1.25	0.984	115-135	N250-70-18X	SPL250

SPECIAL APPLICATION SNAP RINGS

Optional snap rings for tight or loose lockup fit in some applications



Universal Joint Kit

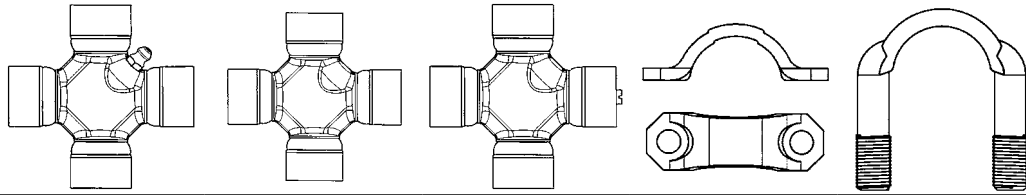
- 2-3011 (.089" undersize, standard = .095)
- 2-3010 (.089" undersize, standard = .095)
- 1-6300 (.062 oversize, standard = .059)
- 1-6301 (.062 oversize, standard = .059)
- 1-0170 (converts 1000 series to 0600 series)

Snap Ring (25 per box)

- Use 1-8297
- Use 1-8297
- Use 1-1771
- Use 1-1771
- Use 1-1077

UNIVERSAL JOINT KIT and HARDWARE LISTING

Standard Universal Joint part numbers with optional versions and associated hardware



Silver U-Joint	Gold U-Joint	Bearing Lube U-Joint	Bearing Strap	Bearing U-Bolt
1-0153	1-0153G	1-0154	1-0022	1-0089
1-0153	1-0153G	1-0154	1-0024	1-0089
1-0174		1-0175		
1-0297		1-0298		
1-0443			1-0022	1-0089
1-4635				
1-5900				
1-6301		1-6300	1-0023	
2-0053	2-0053G	2-0052	1-0019	1-0099
2-0053	2-0053G	2-0052	1-0020	1-0099
2-0054	2-0054G		1-0019	1-0099
2-0054	2-0054G		1-0020	1-0099
2-0335			1-0024	
2-0355				
2-1175	2-1175G		1-0018	
2-1355			1-0020	
2-1569	2-1569G		1-0025	
2-3011	2-3011G	2-3010	1-0025	
2-3100				
2-4800	2-4800G	2-4801	1-0022	1-0089
2-4800	2-4800G	2-4801	1-0024	1-0089
2-4900	2-4900G			1-0189
3-0155			1-0021	1-0109
3-0188			1-0021	1-0109
3-0415			1-0020	
3-3130			1-0025	
4-1090			N90-70-28X	
6-1170			N170-70-18X	
6-1250			N250-70-18X	

COMMON UNIVERSAL JOINTS BY SERIES

DRIVELINE SERIES	NEAPCO QSP ¹ <i>Value Line</i>	NEAPCO SILVER ² <i>Greasable</i>	NEAPCO SILVER ² <i>No Maint.</i>	NEAPCO GOLD ³ <i>No Maint.</i>
1000		1-0170		
1210		1-0443		
7260		1-6301		
1310		1-0153		1-0153G
1310 (wheel joint)			1-0297	
1310/7260		2-3100		
1310/1330		1-0134		
1310/3R		3-3130		
1310/1350		3-3140		
1330		2-4800		2-4800G
1330/7290		2-0355		2-0355G
1330/3R		2-1569		2-1569G
1330/1350		2-3050		
P55-55-675		2-4900		2-4900G
3R		2-3011		2-3011G
7290		2-1175		2-1175G
1350		2-0053		2-0053G
1350/3R		2-1153		
1350/1410			2-1435	
1355			2-1355	
1410		2-0054		2-0054G
1415			3-0415	
1480		3-0188		3-0188G
1480 (wheel joint)		3-0332		
1485			3-0486	
1485 (wheel joint)			3-0485	
1550		3-0155		3-0155G
1610	4-0279Q	4-0279		
1610 Half Round	4-0674Q	4-0674		
1710	5-0280Q	5-0280		
1710 Half Round	6-0675Q	6-0675		
1760	6-0407Q	6-0407		
1760 Half Round	6-0677Q	6-0677		
1810	6-0281Q	6-0281		
1810 Half Round	6-0676Q	6-0676		
1810/9C		6-0324		
1880		6-0308		
1880/9C		6-0326		
SPL90, SPL100		4-1090		
SPL170		6-1170		
SPL250		6-1250		

¹ QSP - Quality Service Part ² SILVER - Standard Universal Joint ³ GOLD - Premium Quality Universal Joint



QSP Universal Joints

Neapco® quality with value based pricing

- 1610 - 1810 Universal Joint Series
- Industry leading competitive price point
- Meets Neapco design and manufacturing standards
- Backed by Neapco's superior customer service
- Available for immediate shipment
- Covered by Neapco's "Limited Warranty" - 1 Year / Unlimited Mileage



Neapco Components, LLC
Box 399, 740 Queen Street
Pottstown, PA 19464-0399

610-323-6000

www.neapco.com



Innovative Drivetrain Solutions®